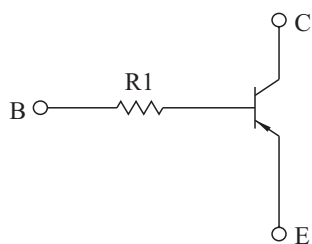


SWITCHING APPLICATION.
INTERFACE CIRCUIT AND DRIVER CIRCUIT APPLICATION.

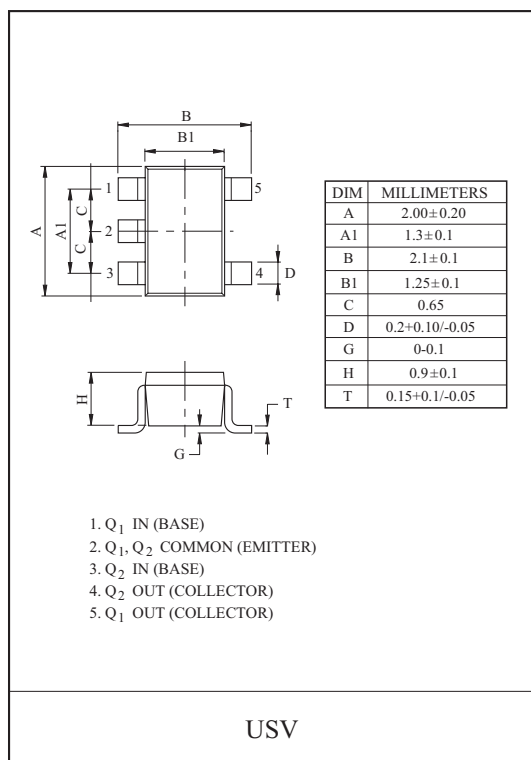
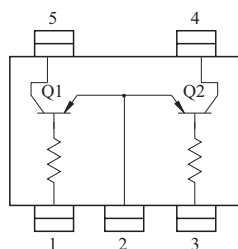
FEATURES

- With Built-in Bias Resistors.
- Simplify Circuit Design.
- Reduce a Quantity of Parts and Manufacturing Process.
- High Packing Density.

EQUIVALENT CIRCUIT



EQUIVALENT CIRCUIT (TOP VIEW)



MAXIMUM RATING (Ta=25 °C)

CHARACTERISTIC	SYMBOL	RATING	UNIT	CHARACTERISTIC	SYMBOL	RATING	UNIT
Collector-Base Voltage	V _{CBO}	-50	V	Collector Power Dissipation	P _C *	200	mW
Collector-Emitter Voltage	V _{CEO}	-50	V	Junction Temperature	T _j	150	°C
Emitter-Base Voltage	V _{EBO}	-5	V	Storage Temperature Range	T _{stg}	-55 ~ 150	°C
Collector Current	I _C	-100	mA	* Total Rating.			

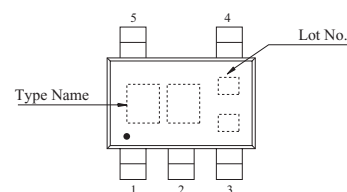
ELECTRICAL CHARACTERISTICS (Ta=25 °C)

CHARACTERISTIC	SYMBOL	TEST CONDITION	MIN.	TYP.	MAX.	UNIT	
Collector Cut-off Current	I _{CBO}	V _{CB} =-50V, I _E =0	-	-	-100	nA	
Emitter Cut-off Current	I _{EBO}	V _{EB} =-5V, I _C =0	-	-	-100	nA	
DC Current Gain	h _{FE}	V _{CE} =-5V, I _C =-1mA	120	-	-		
Collector-Emitter Saturation Voltage	V _{CE(sat)}	I _C =-10mA, I _B =-0.5mA	-	-0.1	-0.3	V	
Transition Frequency	f _T *	V _{CE} =-10V, I _C =-5mA	-	250	-	MHz	
Input Resistor	KRA560U	R ₁		3.29	4.7	6.11	k Ω
	KRA561U			7	10	13	
	KRA562U			70	100	130	
	KRA563U			15.4	22	28.6	
	KRA564U			32.9	47	61.1	

MARK SPEC

TYPE	KRA560U	KRA561U	KRA562U	KRA563U	KRA564U
MARK	PK	PM	PN	PO	PP

Marking

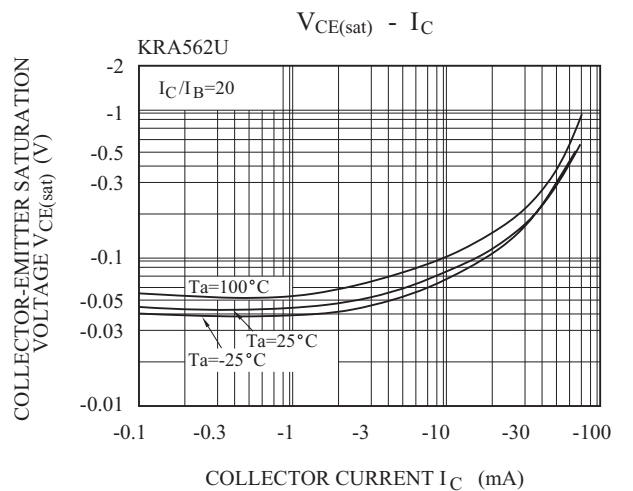
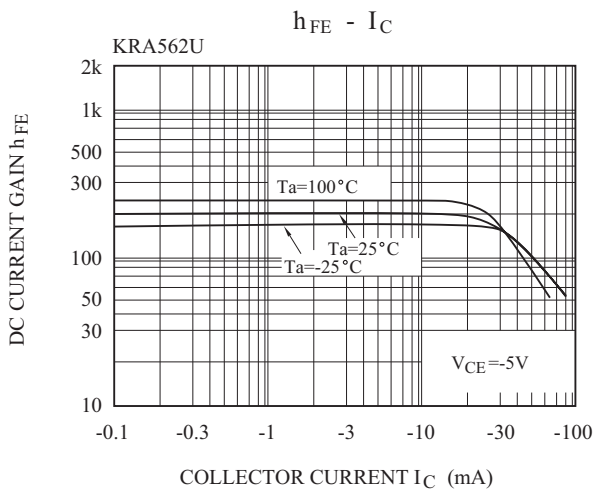
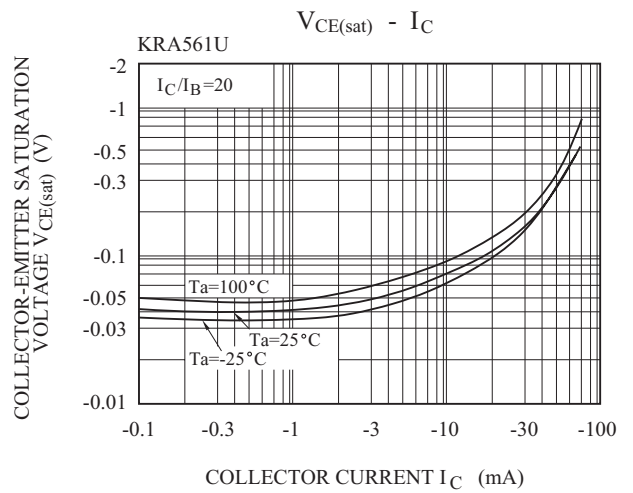
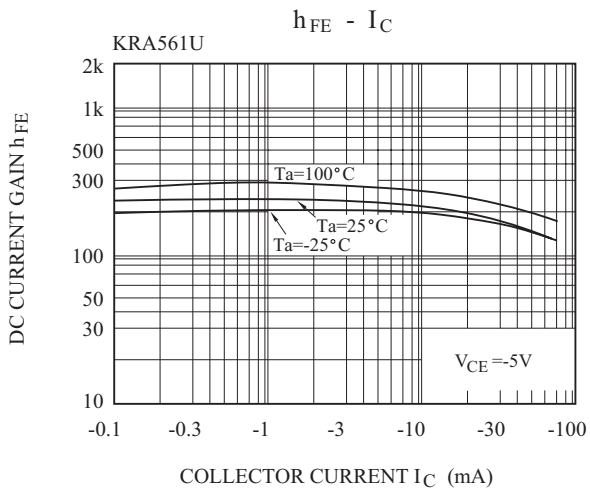
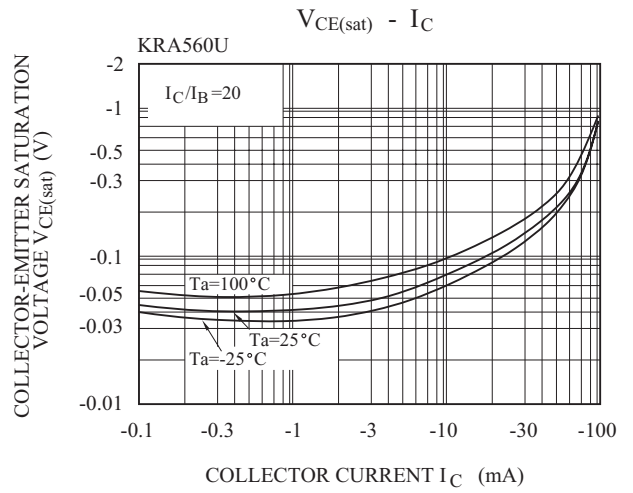
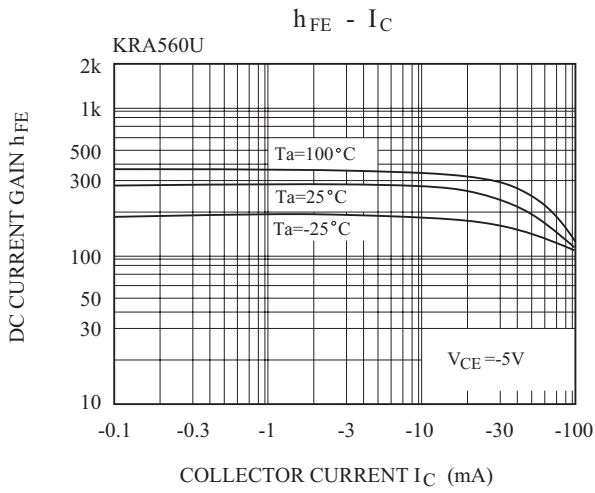


KRA560U~KRA564U

ELECTRICAL CHARACTERISTICS (Ta=25 °C)

CHARACTERISTIC		SYMBOL	TEST CONDITION	MIN.	TYP.	MAX.	UNIT
Switching Time	Rise Time	KRA560U	V _O =-5V V _{IN} =-5V R _L =1k Ω	-	0.2	-	μS
		KRA561U		-	0.065	-	
		KRA562U		-	0.4	-	
		KRA563U		-	0.1	-	
		KRA564U		-	0.15	-	
	Storage Time	KRA560U		-	2.0	-	
		KRA561U		-	1.7	-	
		KRA562U		-	3.0	-	
		KRA563U		-	2.0	-	
		KRA564U		-	1.5	-	
	Fall Time	KRA560U		-	0.3	-	
		KRA561U		-	0.3	-	
		KRA562U		-	1.7	-	
		KRA563U		-	0.8	-	
		KRA564U		-	1.5	-	

KRA560U~KRA564U



KRA560U~KRA564U

