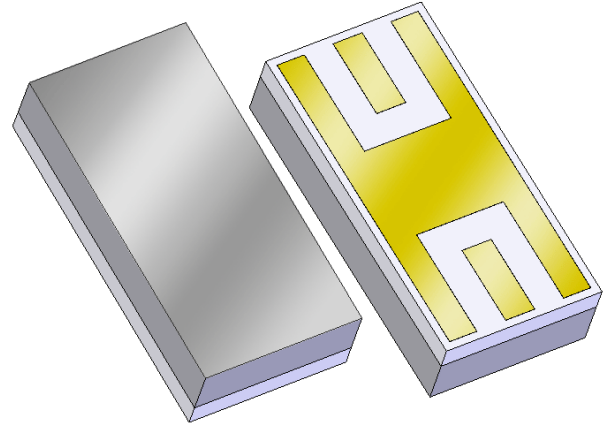


Features

- Usable bandwidth of 35 MHz
- Single-ended operation
- Ceramic Surface Mount Package
- This part number is a replacement for part number SMR-2106-45
- Hermetic

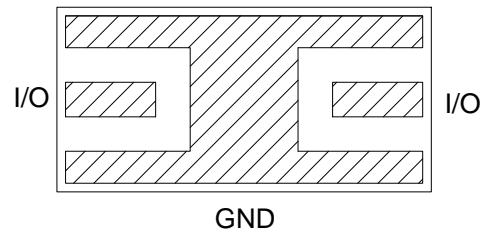
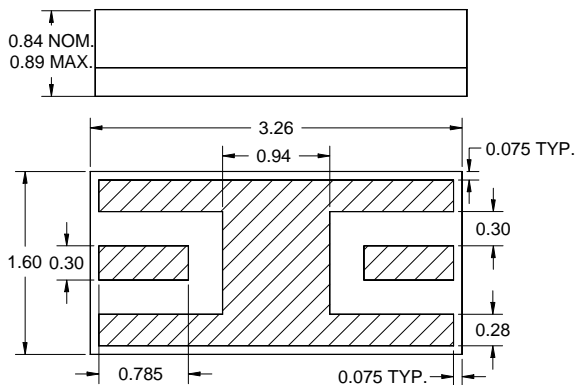


Package

Surface Mount 3.26 x 1.60 x 0.84 mm

Pin Configuration

Bottom View



Pin No.	Description
I/O	Input/Output
GND	Ground

Dimensions shown are nominal in millimeters
All tolerances are $\pm 0.13\text{mm}$ except overall
length and width $\pm 0.25\text{mm}$

Overall width, length, and thickness are the only critical
dimensions. All other dimensions are for reference only

Body: *Sapphire*

Package: *Alumina*

Terminations: *Au* plating 0.5 - 2.5 μm ,
over a 2.0 – 6.0 μm *Ni* plating

Electrical Specifications ⁽¹⁾

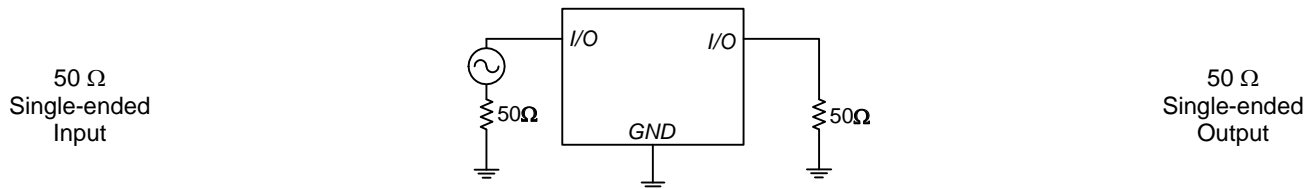
Operating Temperature Range: ⁽²⁾ -40 to +85 °C

Parameter ⁽³⁾	Minimum	Typical	Maximum	Unit
Center Frequency	-	2106	-	MHz
Insertion Loss at Fo	-	-	4	dB
3 dB Bandwidth ⁽⁴⁾	35	-	-	MHz
Source Impedance	-	50	-	Ω
Load Impedance	-	50	-	Ω

Notes:

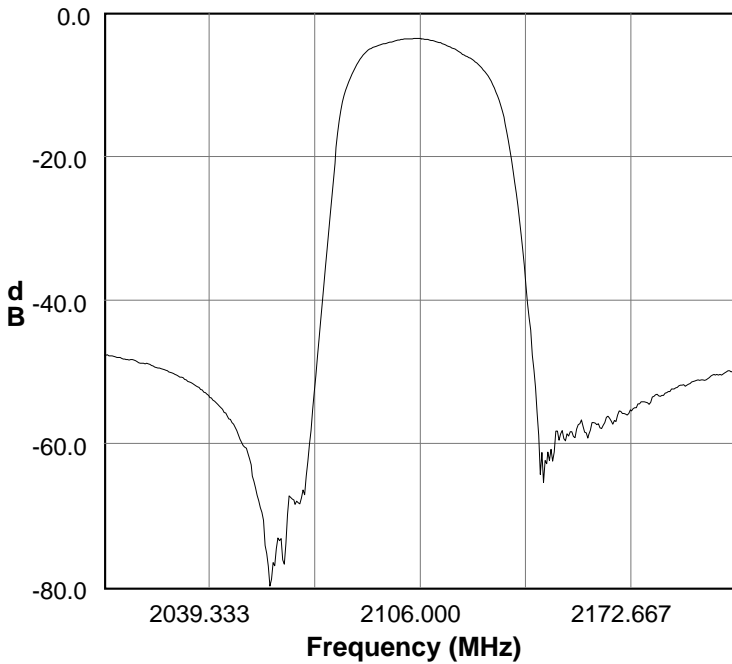
1. All specifications are based on the test circuit shown below
2. In production, devices will be tested at room temperature to a guardbanded specification to ensure electrical compliance over temperature
3. Electrical margin has been built into the design to account for the variations due to temperature drift and manufacturing tolerances
4. Referenced to the insertion loss at center frequency

Test Circuit:

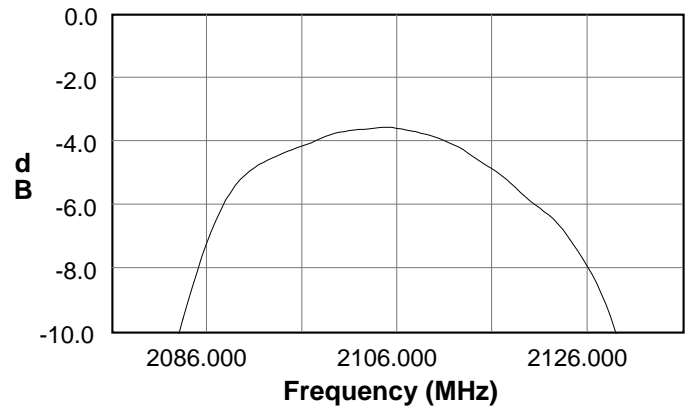


Typical Performance (at +25°C)

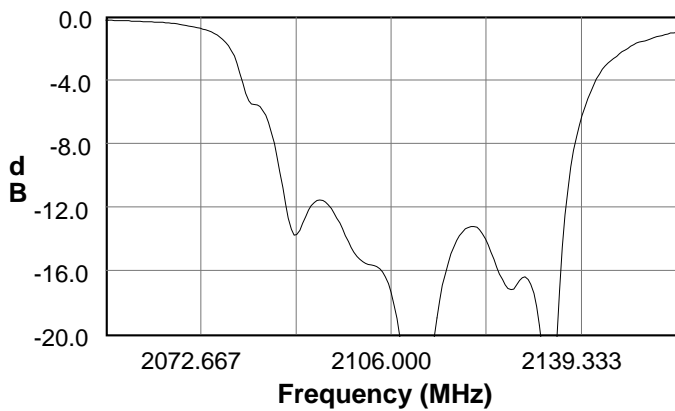
S21 Amplitude Response



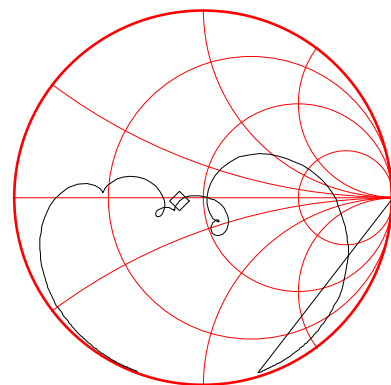
S21 Amplitude Response



S11 Amplitude Response

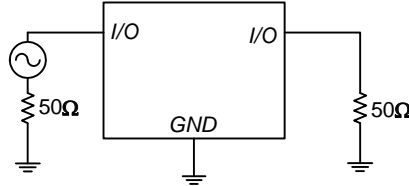


S11 Smith Chart



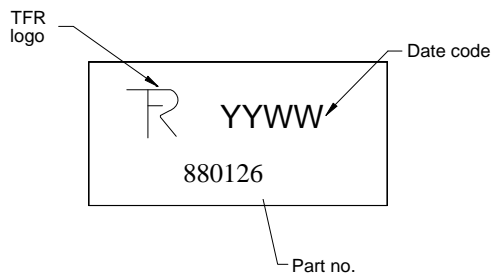
Matching Schematics

50 Ω
Single-ended
Input



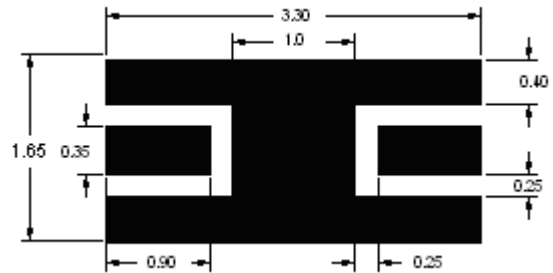
50 Ω
Single-ended
Output

Marking



The date code consists of: YY = last digit of year,
WW = 2 digit week

PCB Footprint



This footprint represents a recommendation only
Dimensions shown are nominal in millimeters

Tape and Reel

Tape and Reel available upon request
EIA-481

Tinning available per J-STD-001

ROHS compliant (no tinning)
DFARS compliant

Maximum Ratings

Parameter	Symbol	Minimum	Maximum	Unit
Operating Temperature Range	T	-40	+85	°C
Storage Temperature Range	T _{stg}	-55	+100	°C

Warnings

- Electrostatic Sensitive Device (ESD)
- Avoid ultrasonic exposure



Links to Additional Technical Information

[PCB Layout Tips](#)

[Qualification Flowchart](#)

[Soldering Profile](#)

[S-Parameters](#)

[Other Technical Information](#)

Sawtek's liability is limited only to the Bulk Acoustic Wave (BAW) component(s) described in this data sheet. Sawtek does not accept any liability for applications, processes, circuits or assemblies, which are implemented using any Sawtek component described in this data sheet.

Contact Information

TriQuint
SEMICONDUCTOR
63140 Britta St. Bldg. C
Bend, OR 97701

Phone: +1 (972) 994-8465
Fax: +1 (972) 994-8504
Email: custservbend@tqs.com
Web: www.triquint.com

Or contact one of our worldwide
Network of [sales offices](#),
[Representatives or distributors](#)