

MITSUBISHI HVIGBT MODULES
CM1800HC-34N

4th-Version HVIGBT (High Voltage Insulated Gate Bipolar Transistor) Modules

HIGH POWER SWITCHING USE
 INSULATED TYPE

CM1800HC-34N



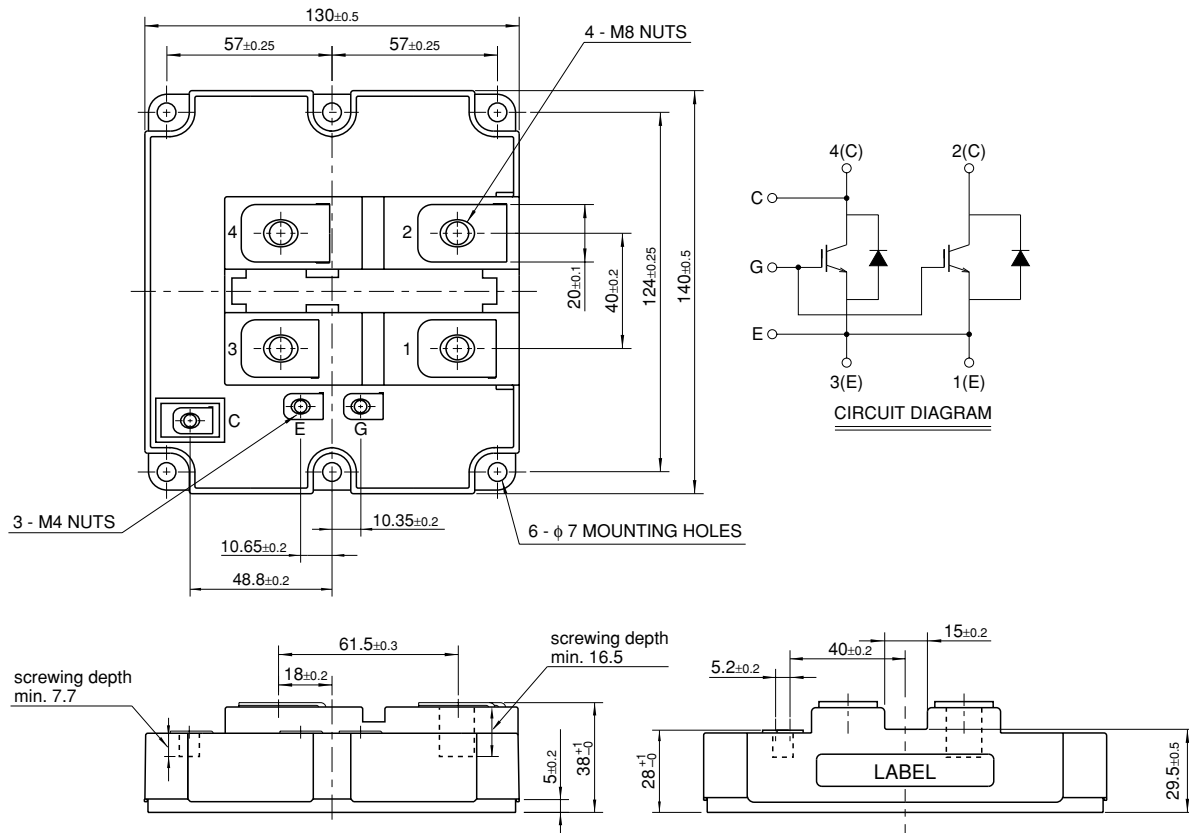
- Ic 1800A
- VCES 1700V
- Insulated Type
- 1-element in a Pack
- AlSiC Baseplate
- Trench Gate IGBT : CSTBT™
- Soft Reverse Recovery Diode

APPLICATION

Traction drives, High Reliability Converters / Inverters, DC choppers

OUTLINE DRAWING & CIRCUIT DIAGRAM

Dimensions in mm



HVIGBT (High Voltage Insulated Gate Bipolar Transistor) Modules

Jul. 2005

CM1800HC-34N

HIGH POWER SWITCHING USE
INSULATED TYPE

4th-Version HVIGBT (High Voltage Insulated Gate Bipolar Transistor) Modules

MAXIMUM RATINGS

Symbol	Item	Conditions	Ratings	Unit
V _{CE}	Collector-emitter voltage	V _{GE} = 0V, T _j = 25°C	1700	V
V _{GES}	Gate-emitter voltage	V _{CE} = 0V, T _j = 25°C	±20	V
I _C	Collector current	T _C = 75°C	1800	A
I _{CM}		Pulse (Note 1)	3600	A
I _E (Note 2)	Emitter current		1800	A
I _{EM} (Note 2)		Pulse (Note 1)	3600	A
P _C (Note 3)	Maximum power dissipation	T _C = 25°C, IGBT part	10000	W
T _j	Junction temperature		-40 ~ +150	°C
T _{op}	Operating temperature		-40 ~ +125	°C
T _{stg}	Storage temperature		-40 ~ +125	°C
V _{iso}	Isolation voltage	RMS, sinusoidal, f = 60Hz, t = 1min.	4000	V
t _p sc	Maximum short circuit pulse width	V _{CC} = 1200V, V _{CE} ≤ 1700V, V _{GE} = 15V T _j = 125°C	10	μs

ELECTRICAL CHARACTERISTICS

Symbol	Item	Conditions	Limits			Unit
			Min	Typ	Max	
I _{CE}	Collector cut-off current	V _{CE} = V _{CE} , V _{GE} = 0V, T _j = 25°C	—	—	6	mA
V _{GE(th)}	Gate-emitter threshold voltage	I _C = 180mA, V _{CE} = 10V, T _j = 25°C	6.0	7.0	8.0	V
I _{GES}	Gate leakage current	V _{GE} = V _{GES} , V _{CE} = 0V, T _j = 25°C	—	—	0.5	μA
V _{CE(sat)}	Collector-emitter saturation voltage	I _C = 1800A, V _{GE} = 15V, T _j = 25°C (Note 4)	—	2.15	2.80	V
		I _C = 1800A, V _{GE} = 15V, T _j = 125°C (Note 4)	—	2.40	—	
C _{ies}	Input capacitance	V _{CE} = 10V, f = 100kHz V _{GE} = 0V, T _j = 25°C	—	264	—	nF
C _{oes}	Output capacitance		—	14.4	—	nF
C _{res}	Reverse transfer capacitance		—	4.2	—	nF
Q _g	Total gate charge	V _{CC} = 850V, I _C = 1800A, V _{GE} = 15V, T _j = 25°C	—	10.2	—	μC
V _{EC} (Note 2)	Emitter-collector voltage	I _E = 1800A, V _{GE} = 0V, T _j = 25°C (Note 4)	—	2.60	3.30	V
		I _E = 1800A, V _{GE} = 0V, T _j = 125°C (Note 4)	—	2.30	—	
t _{d(on)}	Turn-on delay time	V _{CC} = 850V, I _C = 1800A, V _{GE} = ±15V R _{G(on)} = 0.9Ω, T _j = 125°C, L _s = 100nH Inductive load	—	1.00	—	μs
t _r	Turn-on rise time		—	0.40	—	μs
E _{on}	Turn-on switching energy	V _{CC} = 850V, I _C = 1800A, V _{GE} = ±15V R _{G(off)} = 2.2Ω, T _j = 125°C, L _s = 100nH Inductive load	—	550	—	mJ/pulse
t _{d(off)}	Turn-off delay time		—	1.20	—	μs
t _f	Turn-off fall time	V _{CC} = 850V, I _C = 1800A, V _{GE} = ±15V R _{G(off)} = 2.2Ω, T _j = 125°C, L _s = 100nH Inductive load	—	0.30	—	μs
E _{off}	Turn-off switching energy		—	560	—	mJ/pulse
t _{rr} (Note 2)	Reverse recovery time	V _{CC} = 850V, I _C = 1800A, V _{GE} = ±15V	—	1.00	—	μs
I _{rr} (Note 2)	Reverse recovery current	R _{G(on)} = 0.9Ω, T _j = 125°C, L _s = 100nH	—	720	—	A
Q _{rr} (Note 2)	Reverse recovery charge	Inductive load	—	420	—	μC
E _{rec} (Note 2)	Reverse recovery energy		—	280	—	mJ/pulse

Note 1. Pulse width and repetition rate should be such that junction temperature (T_j) does not exceed T_{opmax} rating (125°C).

2. The symbols represent characteristics of the anti-parallel, emitter to collector free-wheel diode (FWDi).

3. Junction temperature (T_j) should not exceed T_{jmax} rating (150°C).

4. Pulse width and repetition rate should be such as to cause negligible temperature rise.

CM1800HC-34N

**HIGH POWER SWITCHING USE
INSULATED TYPE**

4th-Version HVIGBT (High Voltage Insulated Gate Bipolar Transistor) Modules

THERMAL CHARACTERISTICS

Symbol	Item	Conditions	Limits			Unit
			Min	Typ	Max	
R _{th(j-c)Q}	Thermal resistance	Junction to Case, IGBT part	—	—	12.5	K/kW
R _{th(j-c)R}		Junction to Case, FWDi part	—	—	28.0	K/kW
R _{th(c-f)}	Contact thermal resistance	Case to Fin, $\lambda_{grease} = 1W/m \cdot K$	—	11.0	—	K/kW

MECHANICAL CHARACTERISTICS

Symbol	Item	Conditions	Limits			Unit
			Min	Typ	Max	
M	Mounting torque	M8 : Main terminals screw	7.0	—	20.0	N·m
		M6 : Mounting screw	3.0	—	6.0	
		M4 : Auxiliary terminals screw	1.0	—	3.0	
—	Mass		—	0.8	—	kg
CTI	Comparative tracking index		600	—	—	—
d _a	Clearance distance in air		19.5	—	—	mm
d _s	Creepage distance along surface		32.0	—	—	mm
LC-E(int)	Internal inductance	IGBT part	—	16	—	nH
RC-E(int)	Internal lead resistance	T _C = 25°C	—	0.14	—	mΩ

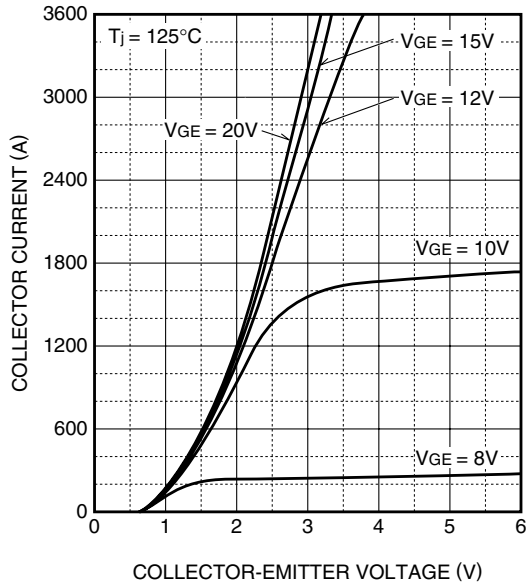
CM1800HC-34N

HIGH POWER SWITCHING USE
INSULATED TYPE

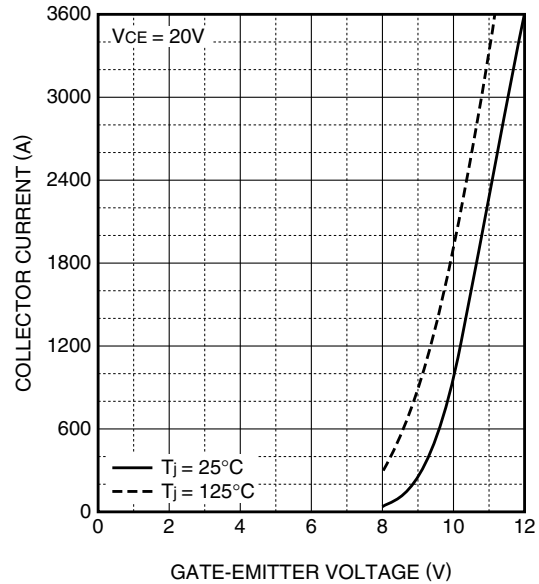
4th-Version HVIGBT (High Voltage Insulated Gate Bipolar Transistor) Modules

PERFORMANCE CURVES

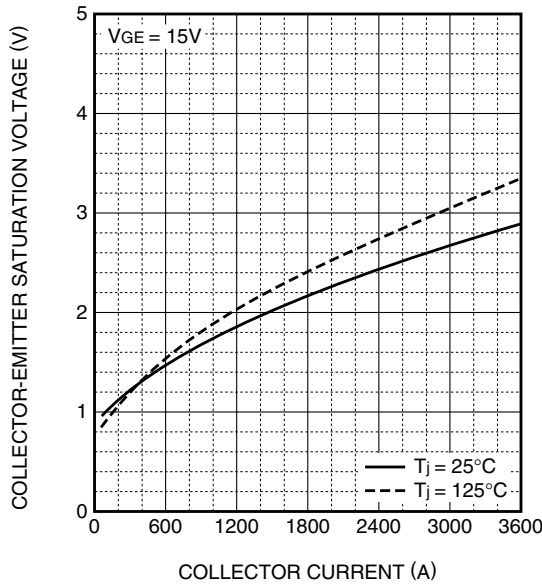
OUTPUT CHARACTERISTICS
(TYPICAL)



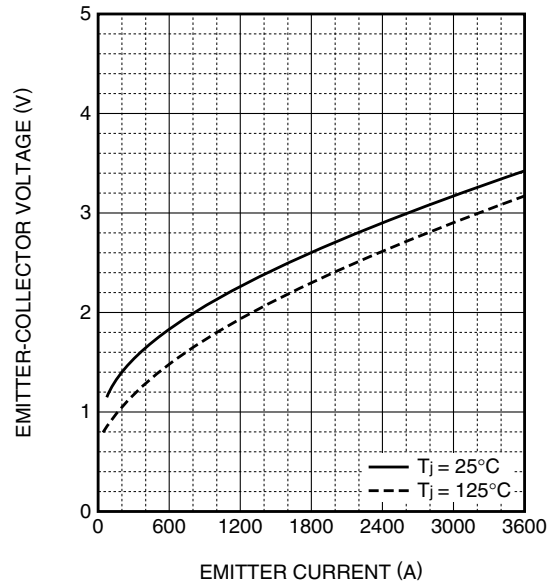
TRANSFER CHARACTERISTICS
(TYPICAL)



COLLECTOR-EMITTER SATURATION
VOLTAGE CHARACTERISTICS
(TYPICAL)



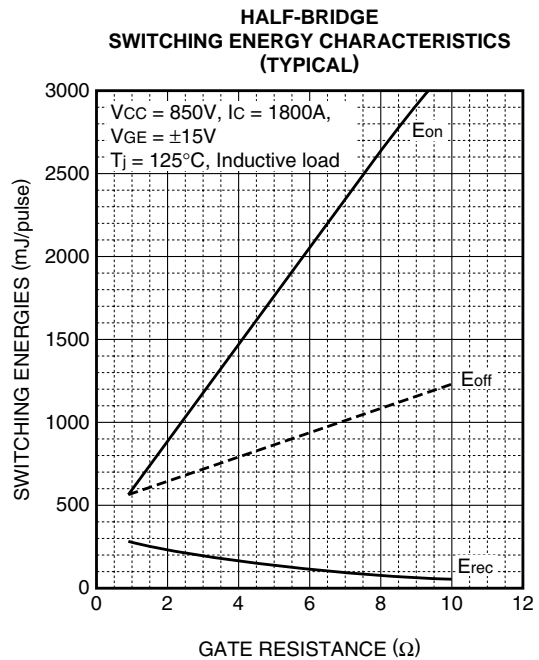
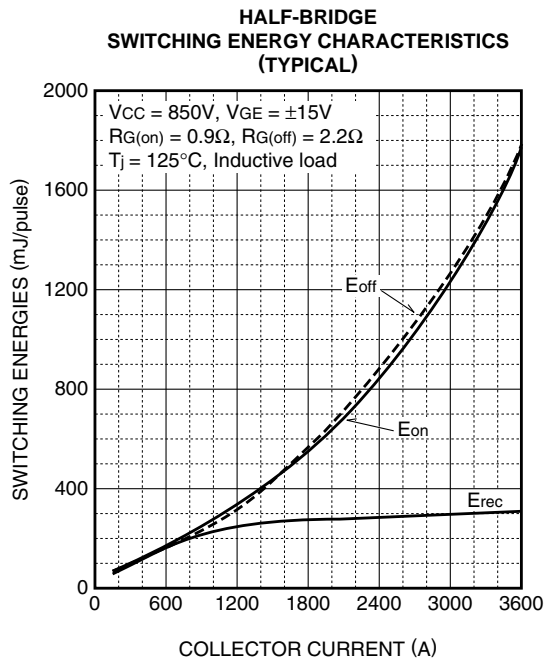
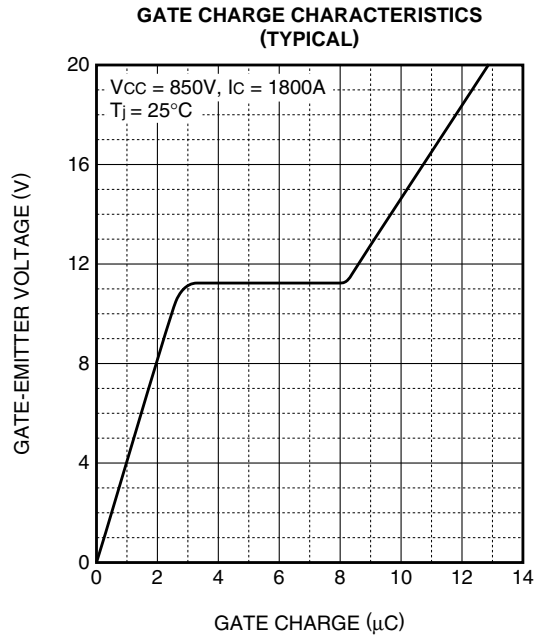
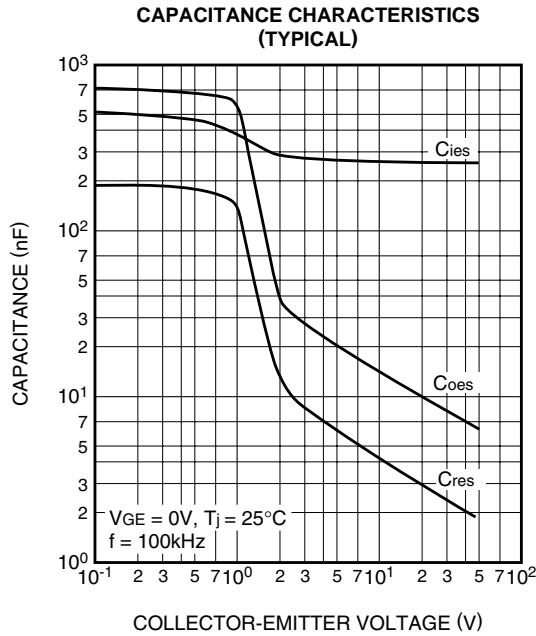
FREE-WHEEL DIODE
FORWARD CHARACTERISTICS
(TYPICAL)



CM1800HC-34N

**HIGH POWER SWITCHING USE
INSULATED TYPE**

4th-Version HVIGBT (High Voltage Insulated Gate Bipolar Transistor) Modules



CM1800HC-34N

HIGH POWER SWITCHING USE
INSULATED TYPE

4th-Version HVIGBT (High Voltage Insulated Gate Bipolar Transistor) Modules

