

Specifications-Con't

MAXIMUM SWR & ZERO INSERTION LOSS:

Model	Frequency (GHz)	SWR	Loss (dB)
3003	dc - 2.5	1.20	< 0.3
3006	dc - 1.25	1.20	< 0.2
3007	dc - 2.5	1.30	< 0.3
3010	dc - 2.5	1.35	< 0.7
3014	dc - 1.25	1.30	< 0.5

INCREMENTAL PHASE SHIFT: ~0.25° per dB x f(GHz)

CONSTRUCTION: Shafting and external hardware and connector shells: CRES Type 303, per ASTM-A582 passivated per QQ-P-35. Housing: AL ALLOY Gold Flash. Knob is included with each unit.

TEST DATA: Test data is available at additional cost.

WEIGHT: Single drum: Net 125 g (4.4 oz)
Dual drum: Net 201 g (9.9 oz)

SWITCHING LIFE: 1,000,000 steps

REPEATABILITY: ±0.1 dB over frequency range and rated life

ROTATION STOPS: Supplied on 10 dB step drums (not supplied on 1 dB drums).

MODEL NUMBER DESCRIPTION:

Example:

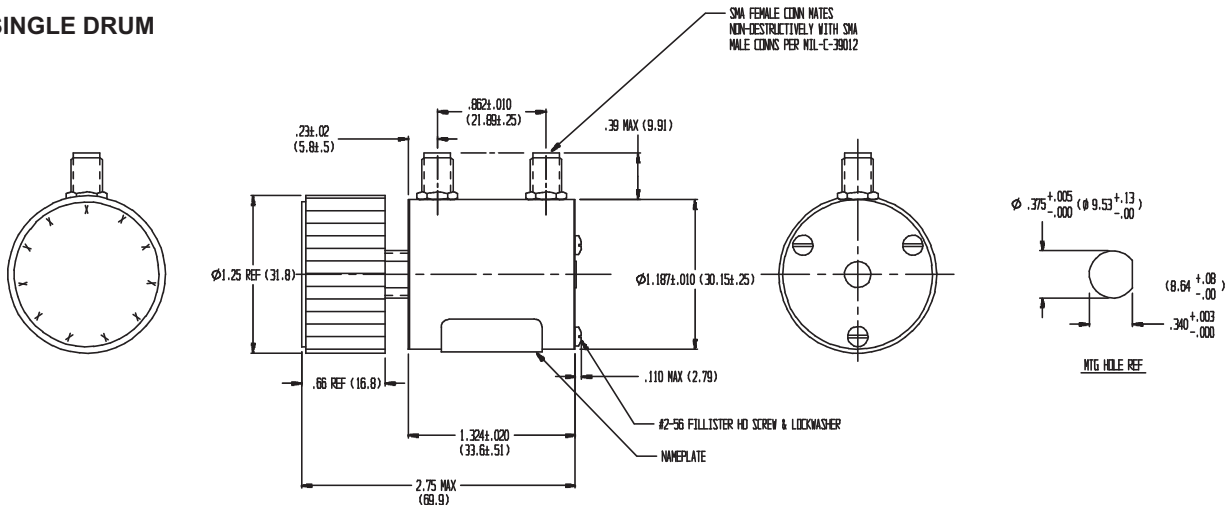
3010 - 100

Basic Model Number

Additional Options no longer available. Add -100 Only!

PHYSICAL DIMENSIONS:

SINGLE DRUM



DUAL DRUM

