

ADAPTERS, In-Series

2.9mm, DC - 40 GHz, Bulkhead Mount

SPECIFICATIONS:

Models: 5223

RoHS
Compliant

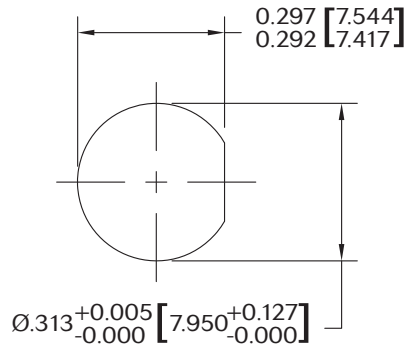
AEROFLEX
A passion for performance.

Electrical:

Frequency Range _____ DC - 40 GHz
 VSWR
 DC - 18 GHz _____ 1.15:1 Max.
 18 - 26.5 GHz _____ 1.25:1 Max.
 26.5 - 40 GHz _____ 1.35:1 Max.
 Nominal Impedance _____ 50 Ohms
 Operating Temp Range _____ -65°C to +125°C

Mechanical:

2.9mm Connectors _____ Passivated Stainless Steel
 Mates SMA, 3.5mm and K* Connectors
 as well as SMK IAW MIL-STD-348
 Conductor _____ Gold Plated Beryllium Copper
 Coupling Nut _____ Passivated Stainless Steel

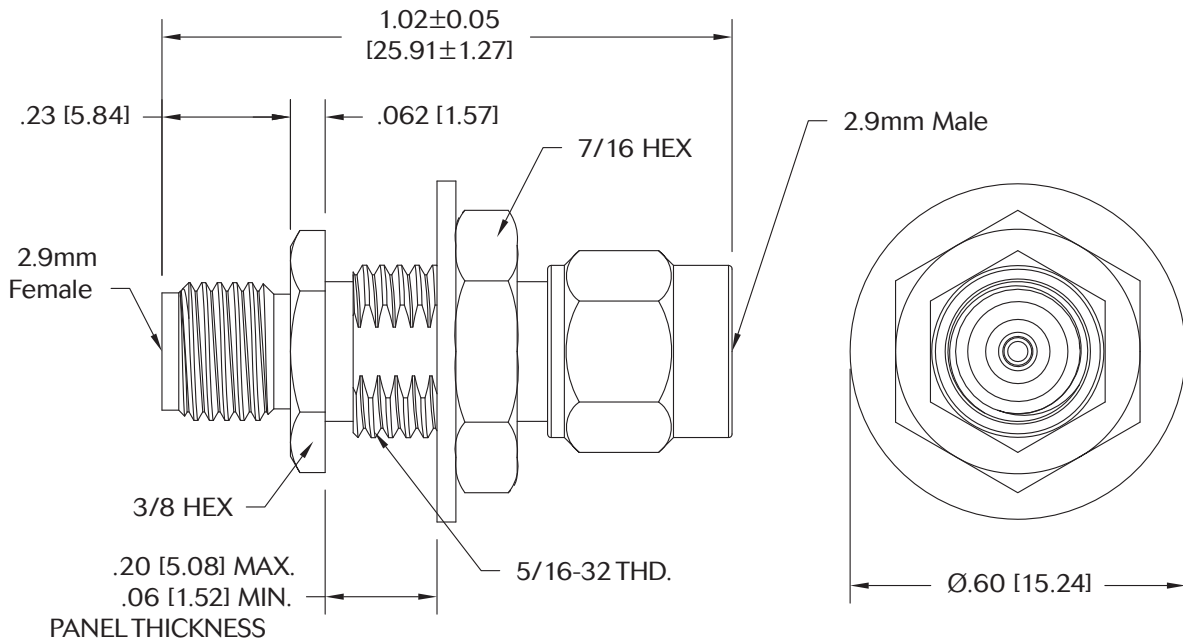


RECOMMENDED
MOUNTING HOLE

*K is a trademark of Anritsu Corp.

Model Number: 5223

OVERALL LENGTH IS WITH COUPLING NUT
BIASED FULLY FORWARD (INSTALLED LENGTH)



NOTE: COUPLING NUT, RETAINING RING, PANEL NUT
AND LOCKWASHER ARE SHIPPED UN-ASSEMBLED.

Note: Dimensions in Brackets are Expressed in Millimeters and are for Reference Only.
Design specifications are subject to change without notice.
Contact factory for technical specifications before purchasing or use.

5223: REV A

AEROFLEX
INMET

Aeroflex / Inmet, Inc. • 300 Dino Drive, Ann Arbor, MI 48103 • U.S.A.
888-244-6638 or 734-426-5553 • FAX: 734-426-5557
www.aeroflex.com/inmet • inmet@aeroflex.com