

Adapters, In-Series

1.85mm, DC-65 GHz, Bulkhead Mount

SPECIFICATIONS:

Models: 5292

RoHS
Compliant

AEROFLEX
A passion for performance.

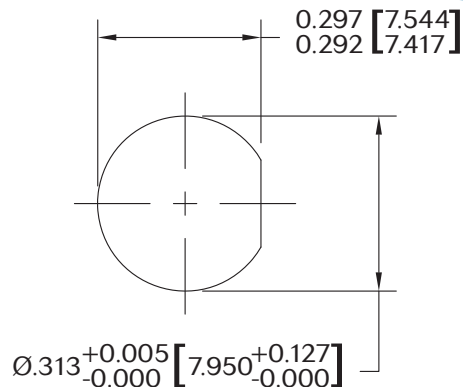
Electrical:

Frequency Range _____ DC - 65 GHz
 VSWR
 DC - 18 GHz _____ 1.25:1 Max.
 18 - 40 GHz _____ 1.40:1 Max.
 40 - 65 GHz _____ 1.50:1 Max.
 Nominal Impedance _____ 50 Ohms
 Operating Temp Range _____ -65°C to +85°C

Mechanical:

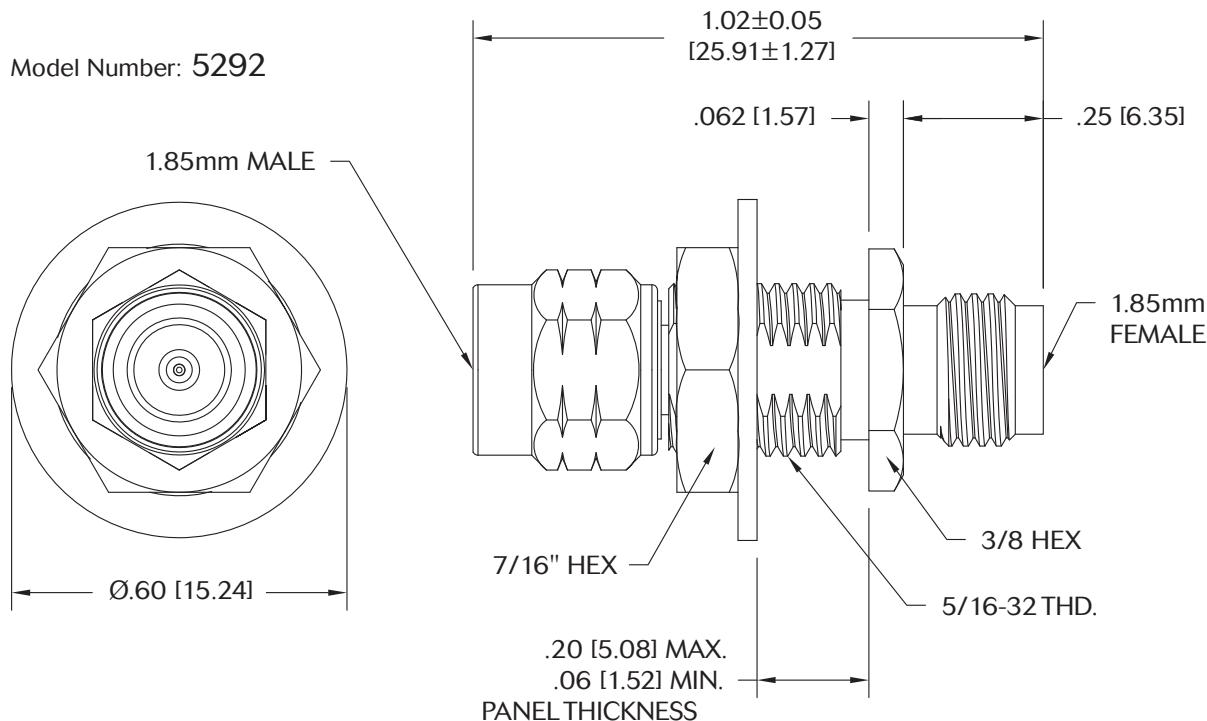
1.85mm Connectors _____ Passivated Stainless Steel
 (Mates with 2.4mm & V* Connectors)
 Conductors _____ Gold Plated Beryllium Copper
 Coupling Nut _____ Passivated Stainless Steel

* V is a Trademark of Anritsu Corp.



RECOMMENDED
MOUNTING HOLE

Model Number: 5292



NOTE: COUPLING NUT, RETAINING RING, PANEL NUT
& LOCKWASHER ARE SHIPPED UN-ASSEMBLED.

Note: Dimensions in Brackets are Expressed in Millimeters and are for Reference Only.
 Design specifications are subject to change without notice.
 Contact factory for technical specifications before purchasing or use.

5292: REV A

AEROFLEX
INMET

Aeroflex / Inmet, Inc. • 300 Dino Drive, Ann Arbor, MI 48103 • U.S.A.
 888-244-6638 or 734-426-5553 • FAX: 734-426-5557
 www.aeroflex.com/inmet • inmet@aeroflex.com