

DC BLOCKS Between Series

Type N / SMA, 10 MHz - 18 GHz, Inner Only

SPECIFICATIONS:

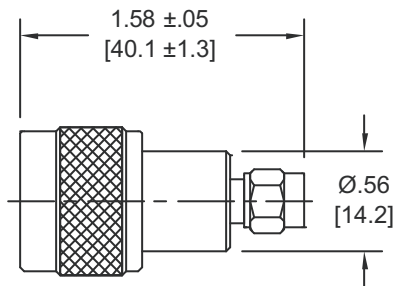
Models: 8301, 8302, 8303, 8304

RoHS
Compliant

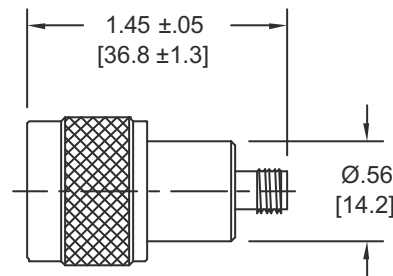
Electrical:	
Frequency Range	10 MHz - 18 GHz
VSWR	1.35:1 Max.
Impedance	50 Ohms
Insertion Loss	0.5 dB Max.
Voltage Rating	200 Volts
Operating Temp. Range	-65°C to +125°C
Mechanical:	
Connectors	Passivated Stainless Steel
	Mates with MIL-STD-348
Conductors	Gold Plated Beryllium Copper



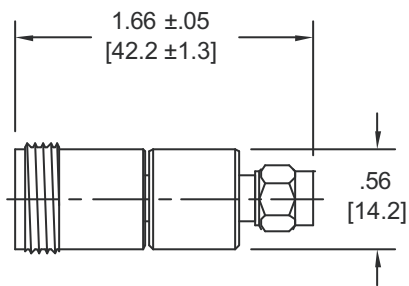
Model Number: **8301**
Type N Male / SMA Male



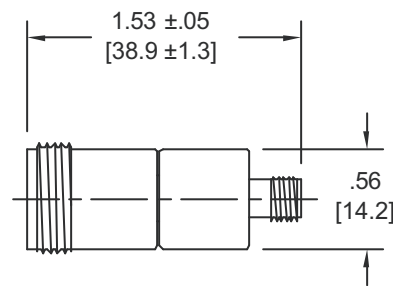
Model Number: **8302**
Type N Male / SMA Female



Model Number: **8303**
Type N Female / SMA Male



Model Number: **8304**
Type N Female / SMA Female



Note: Dimensions in Brackets are Expressed in Millimeters and are for Reference Only.

8301: REV B



Aeroflex / Inmet, Inc. • 300 Dino Drive, Ann Arbor, MI 48103 • U.S.A.
888-244-6638 or 734-426-5553 • FAX: 734-426-5557
www.aeroflex-inmet.com • inmet-sales@eroflex.com