

DC BLOCKING TERMINATIONS

SMP, 30 kHz - 23 GHz, Inner Only

SPECIFICATIONS:

Models: 8530PF

RoHS
Compliant

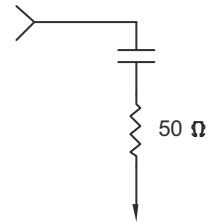
Electrical:

Frequency Range _____ 30 KHz - 23 GHz
VSWR _____ 1.35:1 Max.
Impedance _____ 50 Ohms
Voltage Rating _____ 100 Volts Max DC
Operating Temp. Range _____ -65°C to +125°C

Mechanical:

SMP Connectors _____ Gold Plated Beryllium Copper
Mates with MILSTD-348 & GPO™ Connectors
Conductors _____ Gold Plated Beryllium Copper or Brass
Housing _____ Gold Plated Stainless Steel

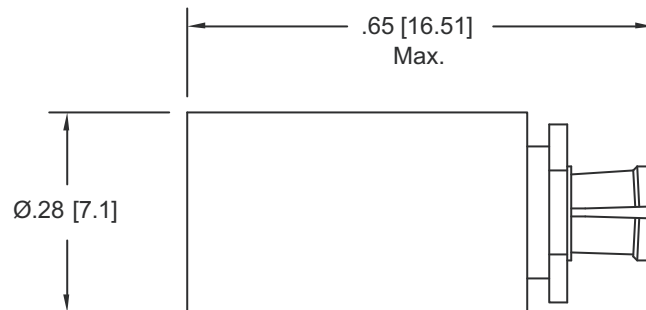
AEROFLEX
A passion for performance.



SCHEMATIC DIAGRAM

GPO™ is a Trademark of Corning Gilbert, Inc.

Model Number: **8530PF**
SMP Female Connector



Note: Dimensions in Brackets are Expressed in Millimeters and are for Reference Only.

8530P: REV B

AEROFLEX
INMET

Aeroflex / Inmet, Inc. • 300 Dino Drive, Ann Arbor, MI 48103 • U.S.A.
888-244-6638 or 734-426-5553 • FAX: 734-426-5557
www.aeroflex.com/inmet • inmet-sales@eroflex.com