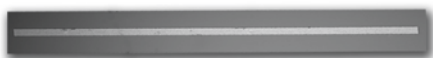


MMPN Series PIN Diodes



Description

The Aeroflex / Metelics MMPN series are distributed PIN diodes that are integrated into a 50 Ω microstrip transmission line. They are designed to be operated as a shunt, reflective attenuators.

Features

- High isolation
- Broadband performance to 50 GHz

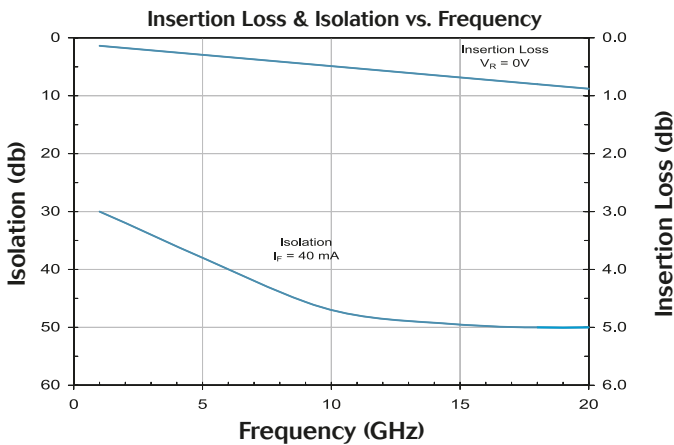
Absolute Maximum Ratings

Parameters	Rating
Reverse Voltage	200 Volts
Forward Current	150 mA
Thermal Resistance, Junction to Case	60 °C/W
Junction Temperature	-65 °C to +175 °C
Storage Temperature	-65 °C to +200 °C
Mounting / Bonding Temperature	+ 320 °C for 10 seconds

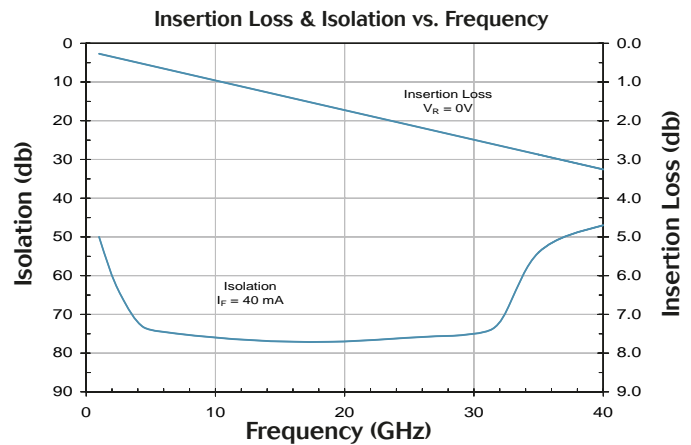
RF Specifications, $T_A = +25\text{ °C}$

Model	I_R MAX nA	V_{BR} MIN V	Insertion Loss MAX dB	Return Loss MIN dB	Isolation MIN dB	Outline
MMPN080150	100	200	3.0	12	50	C51
MMPN080045	100	200	1.0	12	30	C50
Test Conditions	$V_R = 30\text{ V}$	$I_R = 10\text{ }\mu\text{A}$	$V_R = 0\text{ V}$ F = 2 - 35 GHz F = 2 - 20 GHz		$I_F = 40\text{ mA}$ F = 2 - 35 GHz F = 2 - 20 GHz	

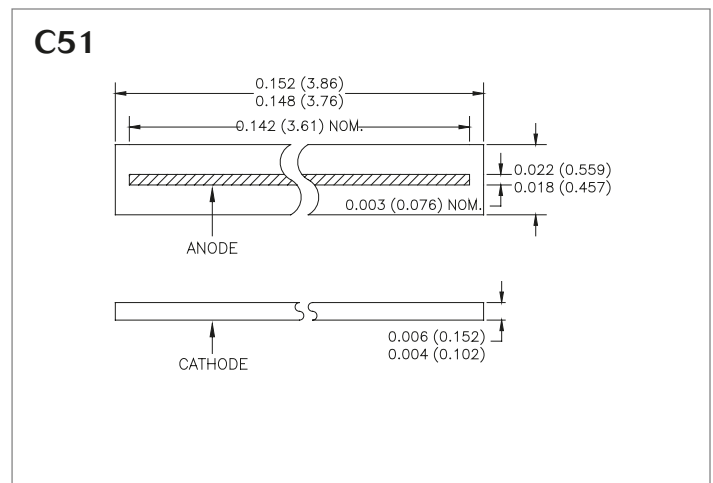
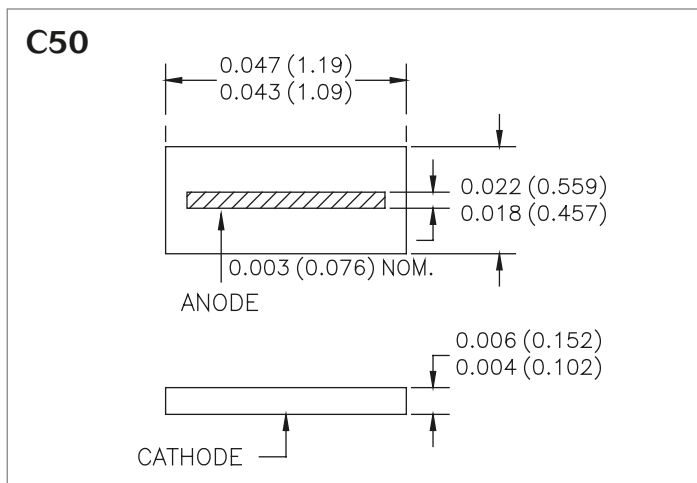
MMPN080045



MMPN080150



Outline Drawings



Aeroflex / Metelics

Aeroflex Microelectronic Solutions
975 Stewart Drive, Sunnyvale, CA 94085
TEL: 408-737-8181
Fax: 408-733-7645

www.aeroflex-metelics.com sales@eroflex-metelics.com

Aeroflex / Metelics, Inc. reserves the right to make changes to any products and services herein at any time without notice. Consult Aeroflex or an authorized sales representative to verify that the information in this data sheet is current before using this product. Aeroflex does not assume any responsibility or liability arising out of the application or use of any product or service described herein, except as expressly agreed to in writing by Aeroflex; nor does the purchase, lease, or use of a product or service from Aeroflex convey a license under any patent rights, copyrights, trademark rights, or any other of the intellectual rights of Aeroflex or of third parties. Copyright 2003 Aeroflex / Metelics. All rights reserved.



Our passion for performance is defined by three attributes represented by these three icons: solution-minded, performance-driven and customer-focused.