

Surface Mount PIN Diode SP2T Switches MSW2060-206, MSW2061-206 & MSW2062-206 Series Datasheet



Features

- Surface Mount SP2T Switch in Compact Outline:
8mm L x 5mm W x 2.5 mm H
- Higher Average Power Handling than Plastic (100 W C.W.)
- Higher Voltage > 500 Volts for Higher RF Peak Power (500 W)
- Lower Insertion Loss (0.30 dB) & Higher IIP3 (65 dBm)
- Operates From +5V & -180V for High Linearity
- RoHS Compliant



Description

The MSW2060-206, MSW2061-206, and MSW2062-206 Series of Surface Mount Silicon PIN Diode SP2T Switches is manufactured using Aeroflex/Metelics proven hybrid manufacturing process incorporating High Voltage PIN Diodes and passive devices integrated within a ceramic substrate. This low profile, compact, surface mount component, (8mm L x 5mm W x 2.5 mm H) offers superior low and high signal performance to comparable MMIC devices in QFN packages. The SP2T switches are designed in a symmetrical topology to optimize Insertion Loss and Isolation performance.

Using PIN Diodes with lower thermal resistance (< 10 °C/W), RF C.W. incident power levels of +50 dBm and RF peak incident power levels of + 57 dBm are very achievable in higher power cold and hot switching applications @ + 85 ° C. The lower PIN Diode series resistance ($< 1.0 \Omega$), coupled with the longer minority carrier lifetime, ($> 3 \mu\text{s}$), provides better IIP3 distortion values $> +65$ dBm.

Applications

These MSW2060-206, MSW2061-206 and MSW2062-206 Series SP2T Switches are designed to be used in higher average and peak power switch applications, operating from 20 MHz to 6000 MHz, requiring high volume, surface mount, solder re-flow manufacturing. These products are durable, reliable, and capable of meeting all military, commercial, and industrial environments. The devices are fully RoHS compliant.

Environmental Capabilities

The MSW2060-206, MSW2061-206, and MSW2062-206 Series SP2T Switches are capable of meeting the environmental requirements of MIL-STD-202 and MIL-STD-750.

ESD and Moisture Sensitivity Level Rating

PIN Diode Switches are susceptible to ESD conditions as with all semiconductors. The ESD rating for this device is Class 1C, HBM. The moisture sensitivity level rating for this device is MSL 2



MSW2060-206 Electrical Specifications

@ $Z_0 = 50 \Omega$, $T_A = +25^\circ\text{C}$ (Unless Otherwise Defined)

Parameter	Symbol	Units	Test Conditions	Minimum Value	Typical Value	Maximum Value
Frequency	F	MHz		20	20 – 1000	1200
J0-J1 or J0-J2 Insertion Loss (Note 3)	IL	dB	-180V @ -50 mA (ON) +1V @ +25 mA (OFF)		-0.25	-0.35
J0-J1 or J0-J2 Return Loss (Note 3)	RL	dB	-180V @ -50 mA (ON) +1V @ +25 mA (OFF)	-20	-23	
J0-J1 or J0-J2 Isolation (Note 3)	Isol	dB	-180V @ -50 mA (ON) +1V @ +25 mA (OFF)	-49	-53	
C.W. Incident Power (Note 3)	Pinc (CW)	dBm	-180V @ -50 mA (ON) +1V @ +25 mA (OFF) 1.5:1 Source & Load VSWR		+50	
Peak. Incident Power (Note 3)	Pinc (Pk)	dBm	-180V @ -50 mA (ON) +1V @ +25 mA (OFF) 1.5:1 Source & Load VSWR		+57 @ 10 μs Pulse, 1 % Duty	
Switching Speed	Ts	μs	(10% -90% RF Voltage) TTL Rep rate = 100 kHz		2	3
Input 3rd Order Intercept Point	IIP3	dBm	F1 = 500 MHz F2 = 510 MHz P1 = P2 = +40 dBm -180V @ -50 mA (ON) +1V @ +25 mA (OFF)	60	65	

MSW2061-206 Electrical Specifications

@ $Z_0 = 50 \Omega$, $T_A = +25^\circ\text{C}$ (Unless Otherwise Defined)

Parameter	Symbol	Units	Test Conditions	Minimum Value	Typical Value	Maximum Value
Frequency	F	MHz		200	400 – 4000	4500
J0-J1 or J0-J2 Insertion Loss (Note 3)	IL	dB	-180V @ -50 mA (ON) +1V @ +25 mA (OFF)		-0.5	-0.7
J0-J1 or J0-J2 Return Loss (Note 3)	RL	dB	-180V @ -50 mA (ON) +1V @ +25 mA (OFF)	-14	-16	
J0-J1 or J0-J2 Isolation (Note 3)	Isol	dB	-180V @ -50 mA (ON) +1V @ +25 mA (OFF)	-32	-35	
C.W. Incident Power (Note 3)	Pinc (CW)	dBm	-180V @ -50 mA (ON) +1V @ +25 mA (OFF) 1.5:1 Source & Load VSWR		+50	
Peak. Incident Power (Note 3)	Pinc (Pk)	dBm	-180V @ -50 mA (ON) +1V @ +25 mA (OFF) 1.5:1 Source & Load VSWR		+57 @ 10 μs Pulse, 1 % Duty	
Switching Speed	Ts	μs	(10% -90% RF Voltage) TTL Rep rate = 100 kHz		1	2
Input 3rd Order Intercept Point	IIP3	dBm	F1 = 2000 MHz F2 = 2010 MHz P1 = P2 = +40 dBm -180V @ -50 mA (ON) +1V @ +25 mA (OFF)	60	65	

SP2T PIN Diode Switches

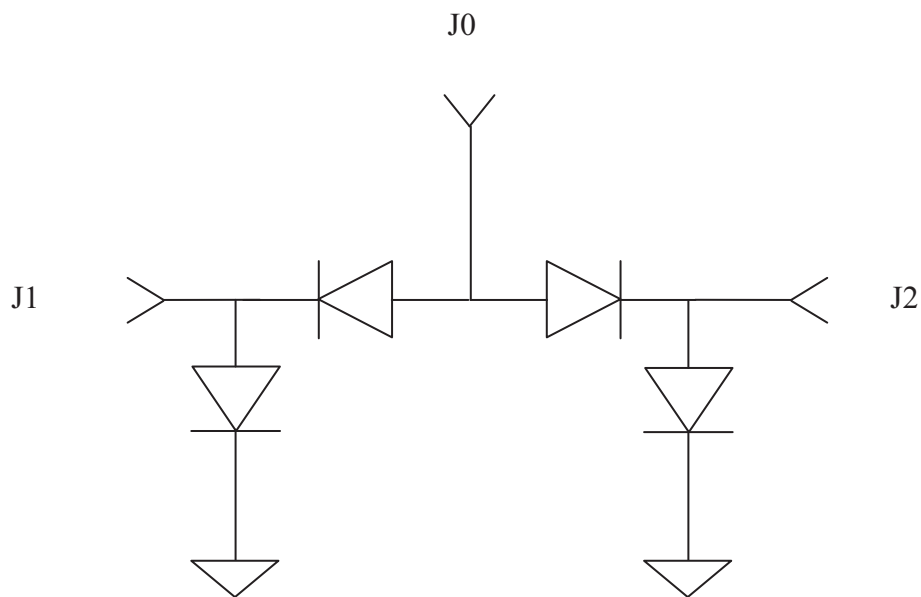


MSW2062-206 Electrical Specifications

@ $Z_0 = 50 \Omega$, $T_A = +25 \text{ }^\circ\text{C}$ (Unless Otherwise Defined)

Parameter	Symbol	Units	Test Conditions	Minimum Value	Typical Value	Maximum Value
Frequency	F	GHz		1.5	2 - 6	6.5
J0-J1 or J0-J2 Insertion Loss (Note 3)	IL	dB	-180V @ -50 mA (ON) +1V @ +25 mA (OFF)		-0.7	-0.9
J0-J1 or J0-J2 Return Loss (Note 3)	RL	dB	-180V @ -50 mA (ON) +1V @ +25 mA (OFF)	-11	-13	
J0-J1 or J0-J2 Isolation (Note 3)	Isol	dB	-180V @ -50 mA (ON) +1V @ +25 mA (OFF)	-31	-34	
C.W. Incident Power (Note 3)	Pinc (CW)	dBm	-180V @ -50 mA (ON) +1V @ +25 mA (OFF) 1.5:1 Source & Load VSWR		+50	
Peak. Incident Power (Note 3)	Pinc (Pk)	dBm	-180V @ -50 mA (ON) +1V @ +25 mA (OFF) 1.5:1 Source & Load VSWR		+57 @ 10 μs Pulse, 1 % Duty	
Switching Speed	Ts	μs	(10% -90% RF Voltage) TTL Rep rate = 100 kHz		1	2
Input 3rd Order Intercept Point	IIP3	dBm	F1 = 2000 MHz F2 = 2010 MHz P1 = P2 = +40 dBm -180V @ -50 mA (ON) +1V @ +25 mA (OFF)	60	65	

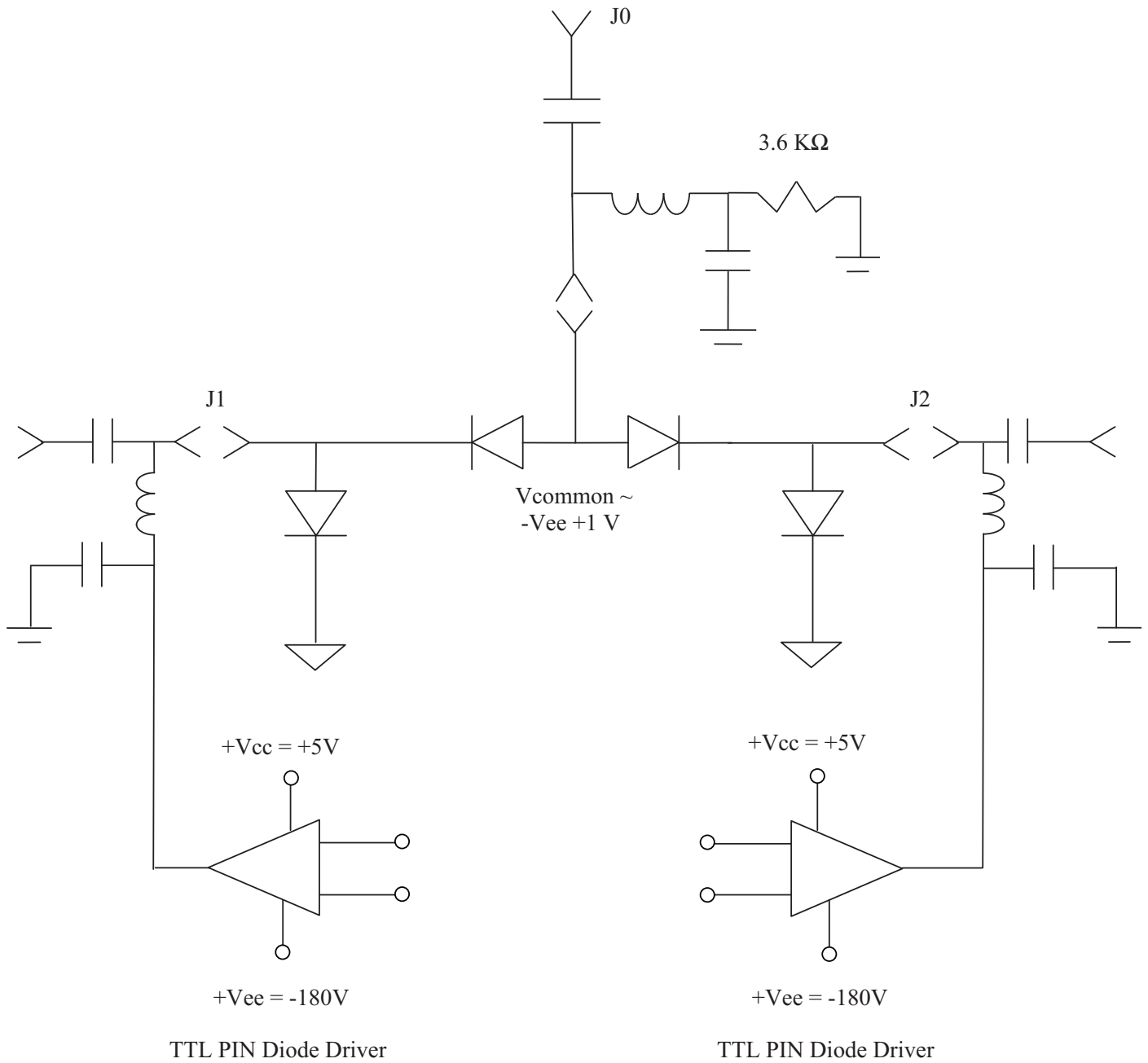
MSW2060-200, MSW2061-200 & MSW2062-200 SP2T Schematic



Electrical Specification Notes:

1. Switching Speed (50 % TTL – 10/90 % RF Voltage) is a Function of the PIN Diode Driver Performance. A RC " Current Spiking Network" is used on the Driver output to provide a $I_c = C \, dV/dt$ transient current to move Stored charge through the PIN Diode, typical values are: $R = 50 - 220 \, \Omega$ and $C = 470 - 1,000 \, pF$.
2. Aeroflex / Metelics MPD2T5N200-702 is the recommended Driver to interface with the MSW2060, 2061, 2062-206 SP2T Switches and its data sheet may be found at <http://www.aeroflex.com/metelics>.
3. PIN Diode D.C. Reverse Voltage to maintain High Resistance in the OFF PIN diode is determined by RF Frequency, Incident Power, and VSWR. The Minimum D.C. Reverse Voltage values are provided on page 6 of this datasheet. -5V @ -50 mA values may be utilized for small signal testing ~0 dBm.

SP2T Switch Schematic with RF Bias Network and Truth Table



RF Bias Network Values

Part Number	F (MHz)	DC Blocking Capacitors	Inductors	RF Bypass Capacitors
MSW2060-200	50 – 1,000	0.1 μ F	4.7 μ H	0.1 μ F
MSW2061-200	400 – 4,000	27 pF	82 nH	270 pF
MSW2062-200	2,000 - 6,000	22 pF	33 μ H	33 pF

D.C. Bias to RF Truth Table

RF State	J1 Bias	J2 Bias
J1 - J0 Low Loss & J2 - J0 Isolation	-180V @ -50 mA	+1 V @ +25 mA
J2 - J0 Low Loss & J1 - J0 Isolation	+1 V @ +25 mA	-180V @ -50 mA

Minimum Reverse Bias Voltage @ J1, J2 ports vs. Frequency for 100 W C.W. Power with 1.5:1 VSWR

Part Number	F (MHz) & - Vdc	F (MHz) & - Vdc	F (MHz) & - Vdc	F (MHz) & - Vdc	F (MHz) & - Vdc	F (MHz) & - Vdc
MSW2060-206	20 MHz -180 V	100 MHz -150 V	200 MHz -75 V	400 MHz -55 V	1,000 MHz -35 V	4,000 MHz NA
MSW2061-206	20 MHz NA	100 MHz NA	200 MHz -150 V	400 MHz -110 V	1,000 MHz -55 V	4,000 MHz -25 V
MSW2062-206	1,000 MHz -55 V	2,000 MHz -28 V	3,000 MHz -28 V	4,000 MHz -28 V	5,000 MHz -28 V	6,000 MHz -28 V

Notes:

1. " NA " denotes the Switch is not defined for that Frequency Band.

SP2T PIN Diode Switches



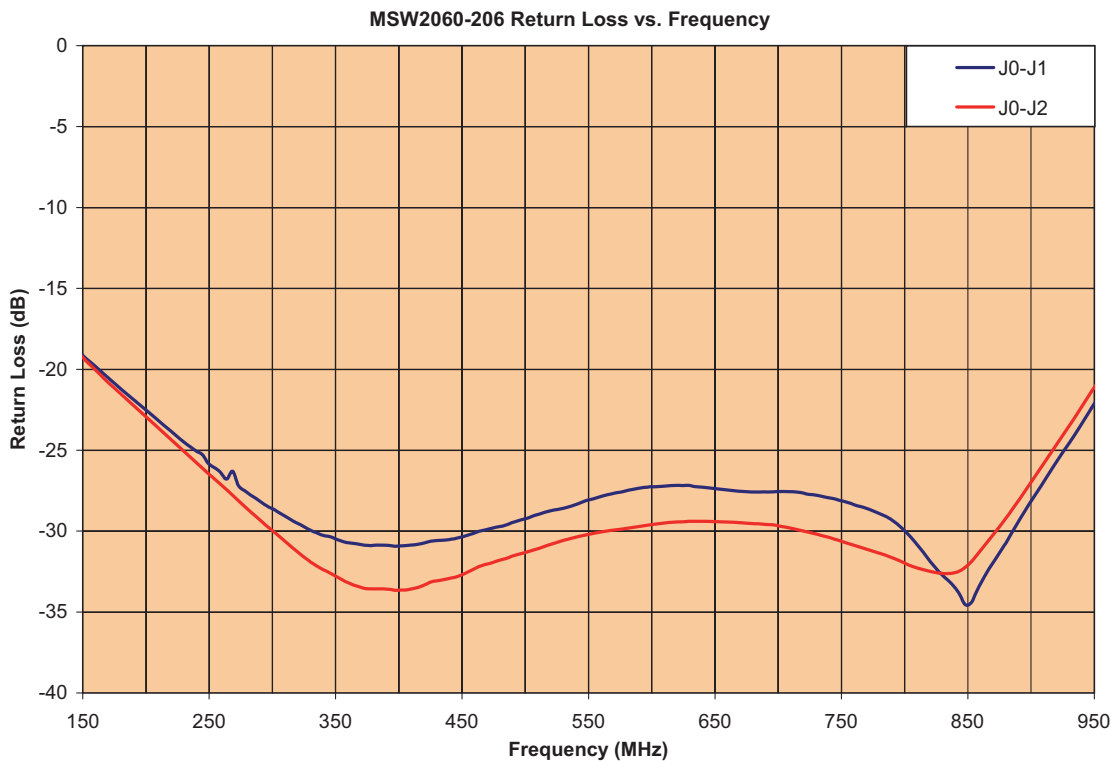
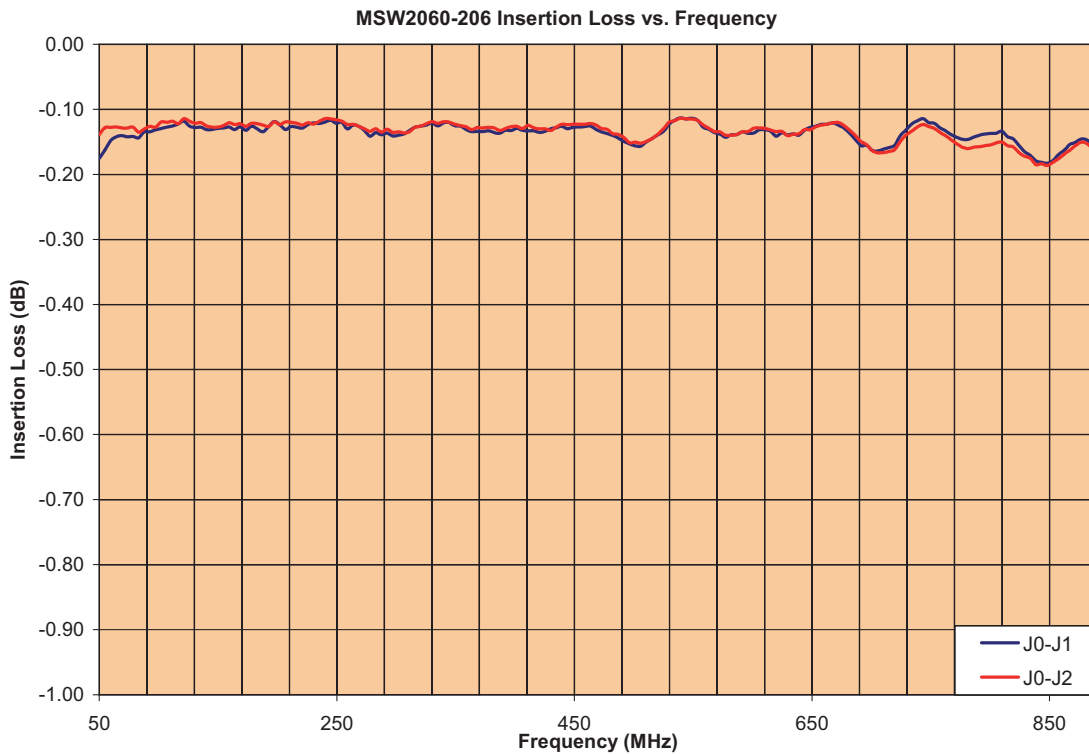
Absolute Maximum Ratings @ $T_A = + 25\text{ }^\circ\text{C}$ (Unless Otherwise Defined)

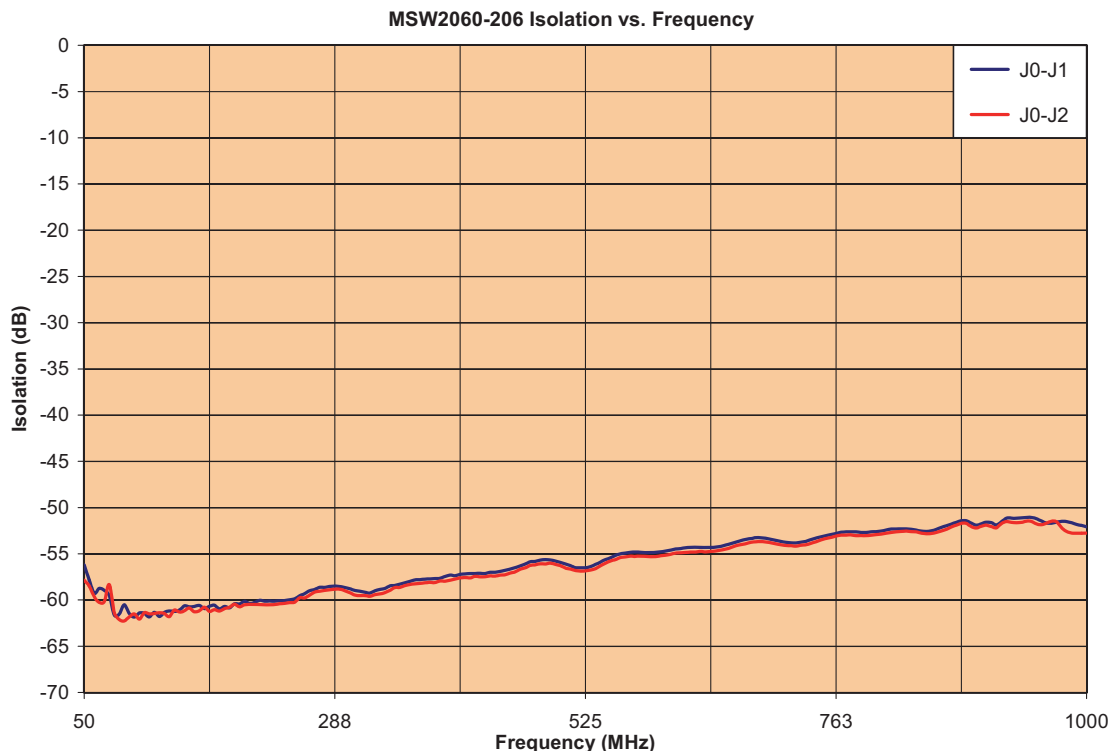
Parameter	Absolute Maximum Value
Forward Current @ J1 or J2	$\pm 250\text{ mA}$
Reverse Voltage @ J1 or J2	$ -300 \text{ V}$
Forward Diode Voltage	$1.2\text{ V @ } 250\text{ mA}$
Operating Temperature	$-65\text{ }^\circ\text{C to } +125\text{ }^\circ\text{C}$
Storage Temperature	$-65\text{ }^\circ\text{C to } +150\text{ }^\circ\text{C}$
Junction Temperature	$+175\text{ }^\circ\text{C}$
Assembly Temperature	$+260\text{ }^\circ\text{C for } 10\text{ Seconds}$
C.W. Incident Power Handling Source & Load VSWR = 1.5 :1 (Cold Switching & Hot Switching) Notes 1, 2	$+50\text{ dBm @ } +85\text{ }^\circ\text{C Case Temperature}$
Peak Incident Power Handling Source & Load VSWR = 1.5 :1 (Cold Switching & Hot Switching) Notes 1, 2	$+57\text{ @ } 10\text{ }\mu\text{S Pulse, } 1\% \text{ Duty}$ $\text{@ } +85\text{ }^\circ\text{C Case Temperature}$
Total Dissipated RF & D.C. Power (Cold Switching) Notes 1, 2	$12\text{ W @ } +85\text{ }^\circ\text{C Case Temperature}$

Notes:

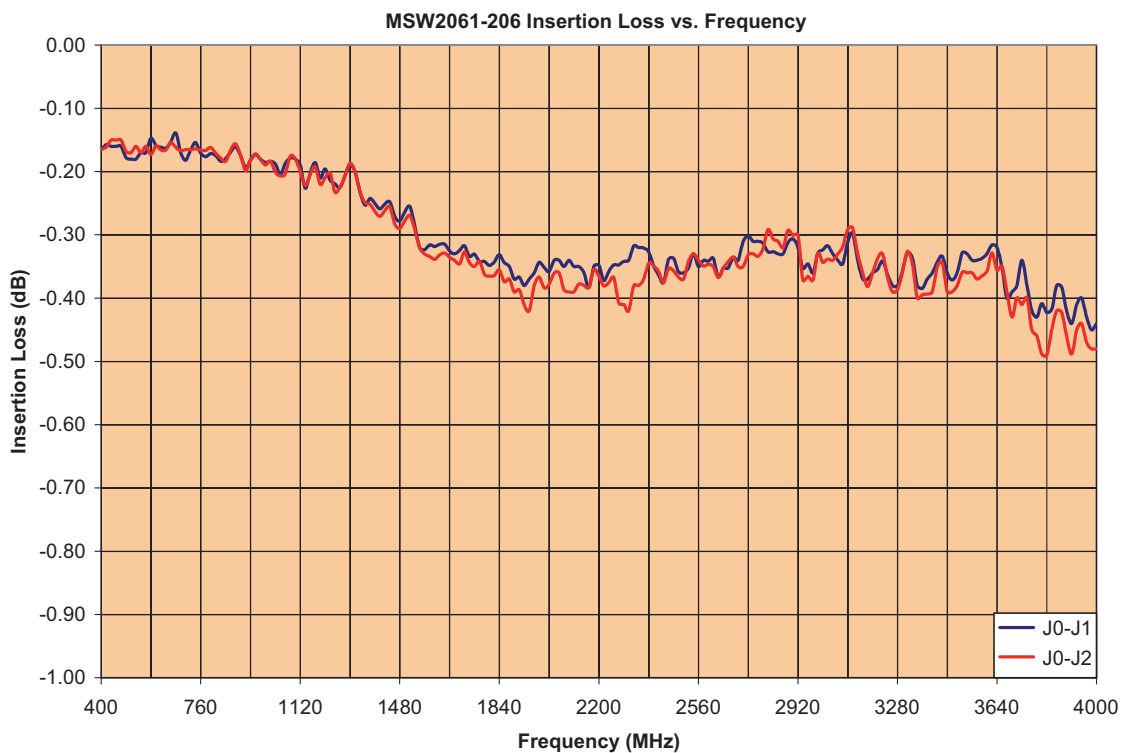
1. For Hot Switching, PIN Diode Driver must Transition from Forward Bias to Reverse Bias and Reverse Bias to Forward Bias within 100 ns with a parallel RC spiking network at the Driver Output.
2. Backside RF and D.C. Grounding Area of Device must be Completely Solder Attached to RF Circuit Board Vias for Proper Electrical and Thermal RF Circuit Grounding.

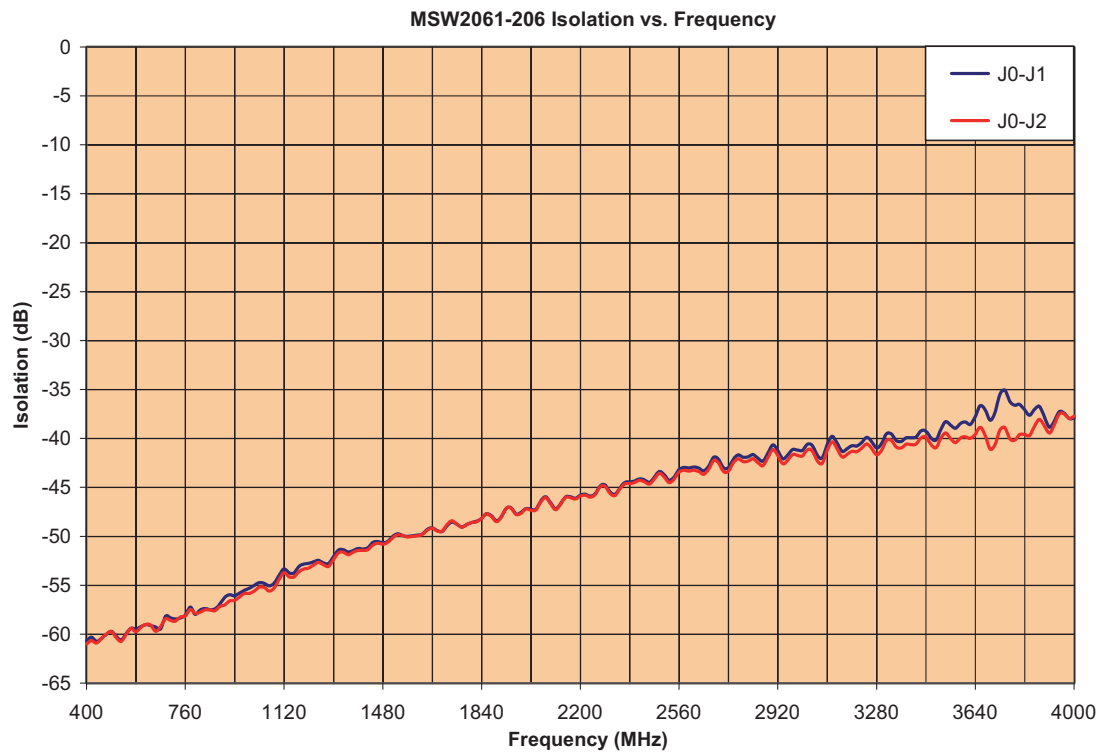
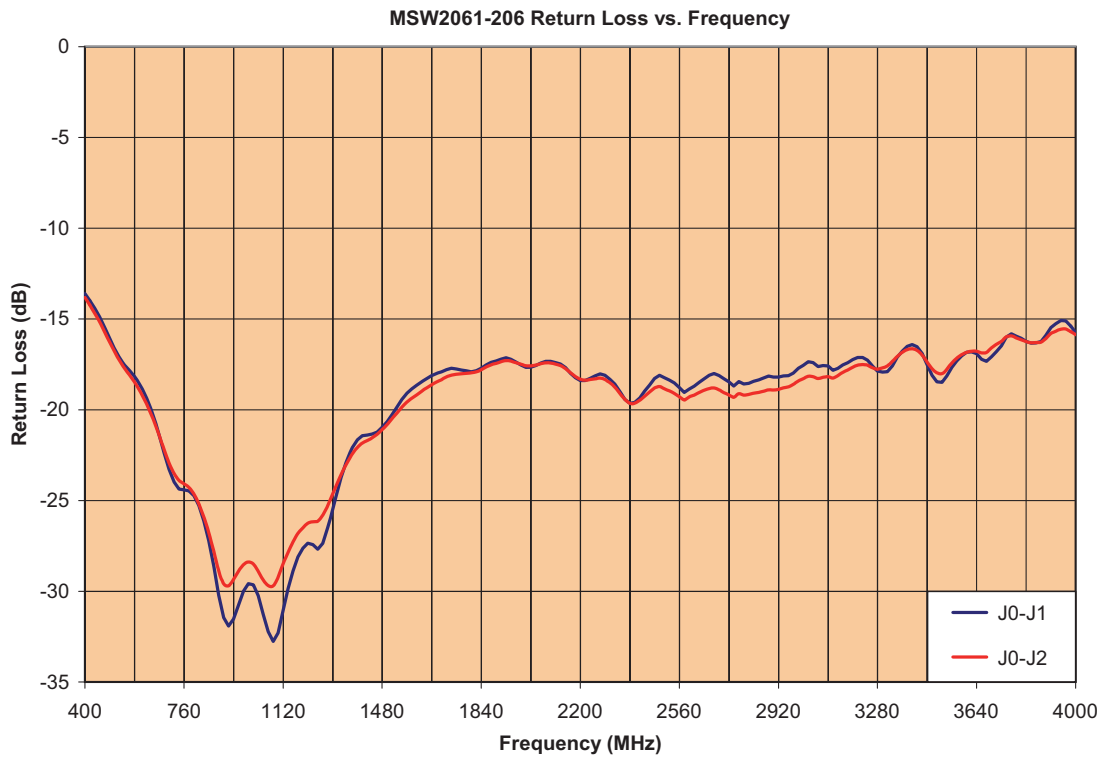
MSW2060-206 Small Signal Parametric Performance



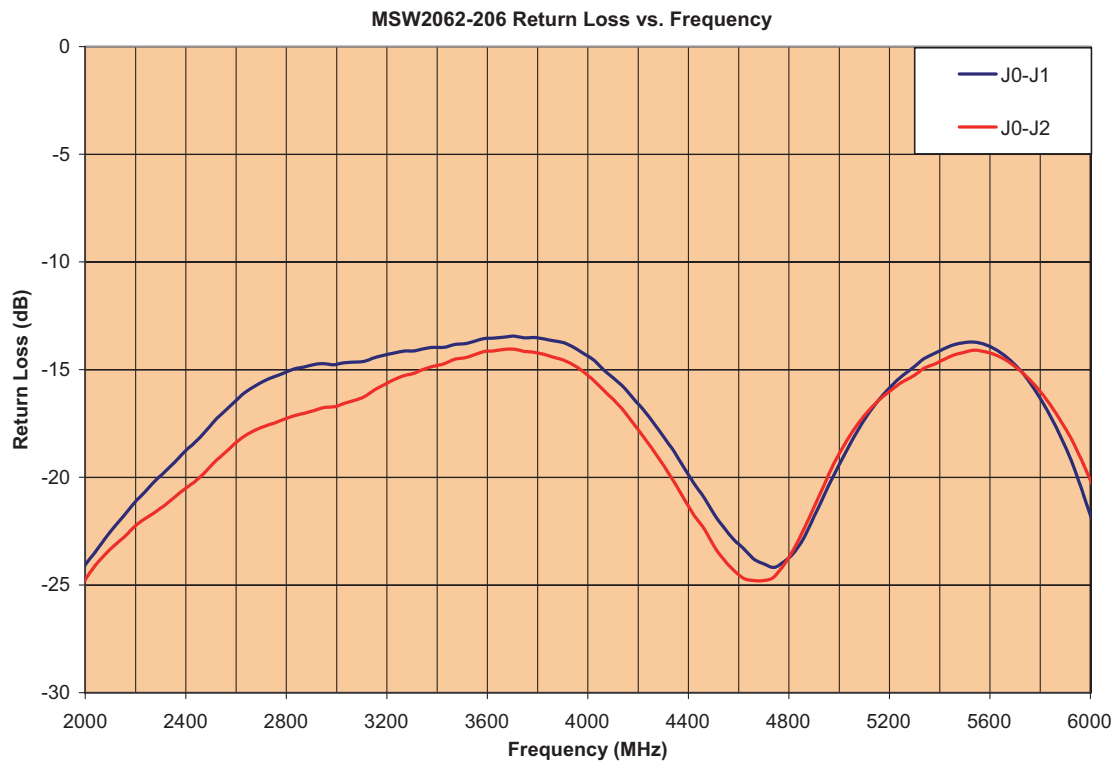
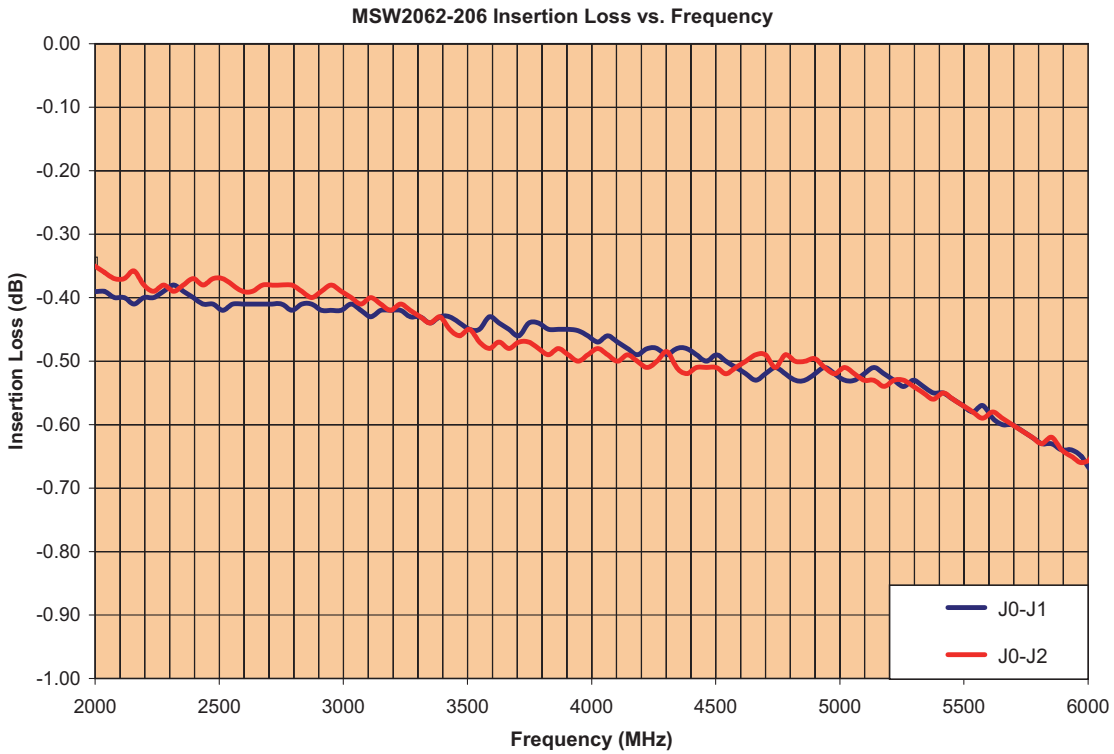


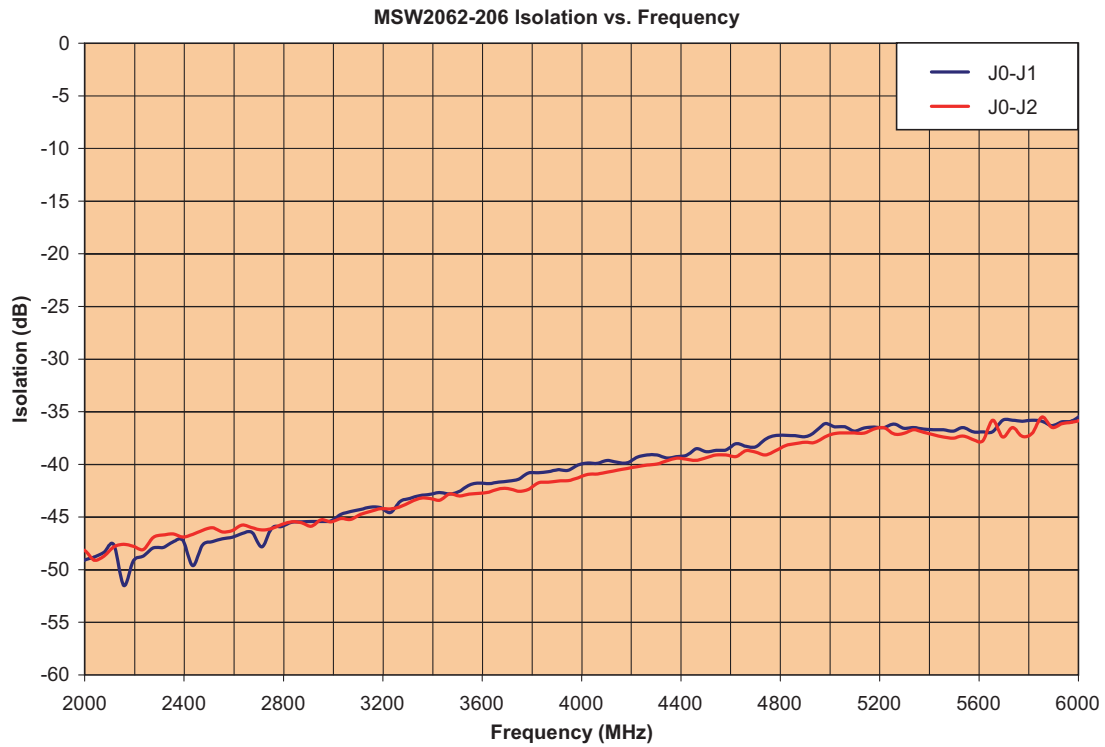
MSW2061-206 Small Signal Parametric Performance





MSW2062-206 Small Signal Parametric Performance





SP2T PIN Diode Switches

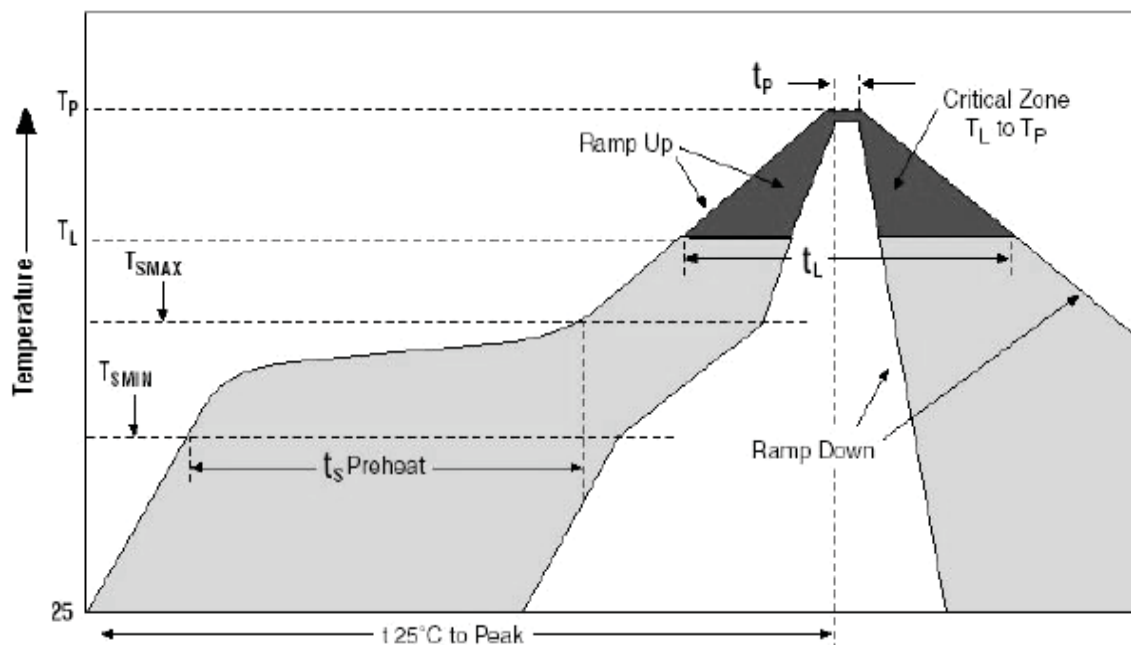
Assembly Instructions

The MSW2060-206, MSW2061-206, and MSW2062-206 Switches are capable of being placed onto circuit boards with pick and place manufacturing equipment from tube or tape-reel dispensing. The devices are attached to the circuit board using conventional solder re-flow or wave soldering procedures with RoHS type or Sn 63 / Pb 37 type solders per Table I and Graph I Time-Temperature recommended profile

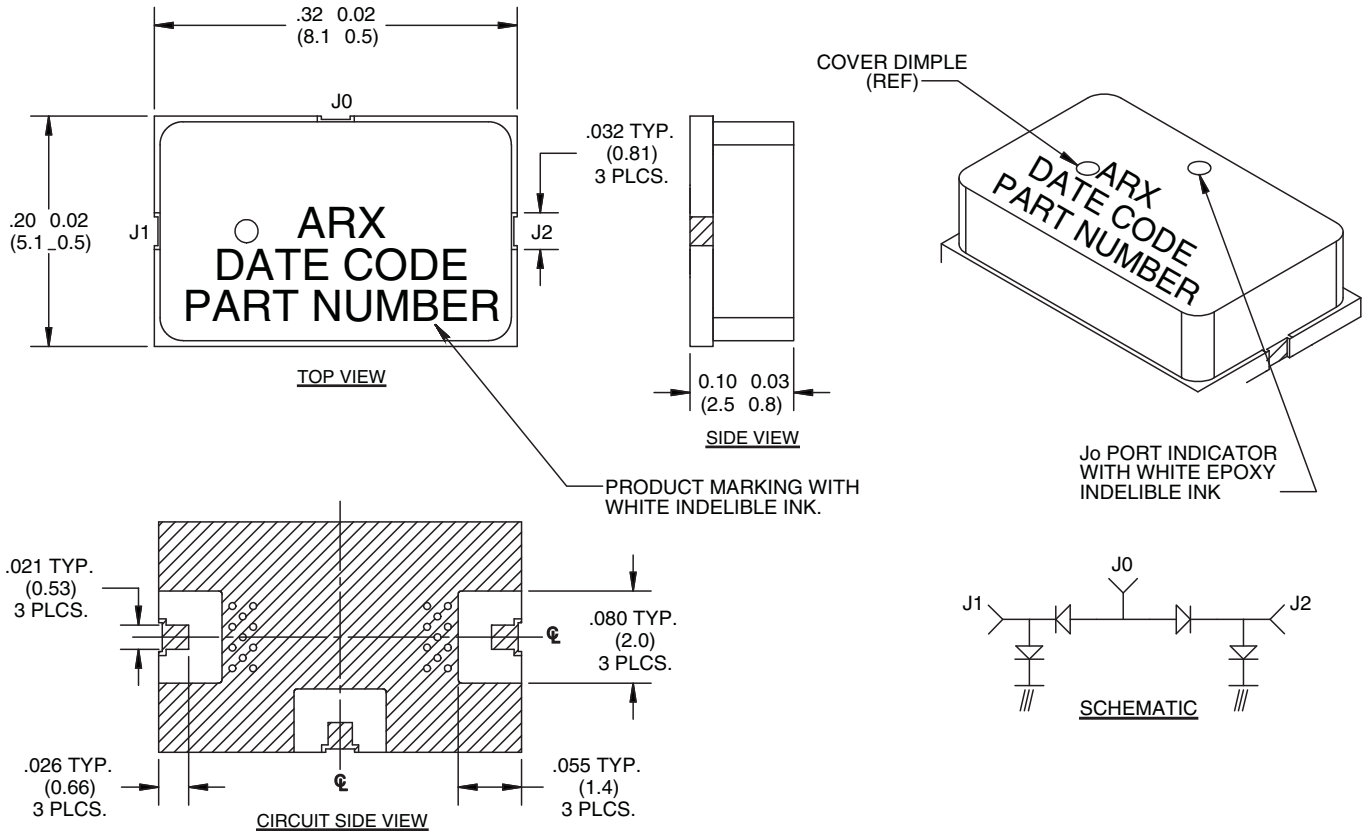
Table 1: Time-Temperature Profile for Sn 60/Pb40 or RoHS Type Solders

Profile Feature	Sn-Pb Eutectic Assembly	Pb-Free Assembly
Average ramp-up rate (T_L to T_P)	3°C/second maximum	3°C/second maximum
Preheat - Temperature Minimum (T_{SMIN}) - Temperature Maximum (T_{SMAX}) - Time (Minimum to maximum) (t_S)	100°C 150°C 60-120 seconds	150°C 200°C 60-180 seconds
T_{SMAX} to T_L - Ramp-up Rate		3°C/second maximum
Time Maintained above: - Temperature (T_L) - Time (t_L)	183°C 60-150 seconds	217°C 60-150 seconds
Peak Temperature (T_P)	225 +0 / -5°C	245 +0/-5°C
Time within 5°C of actual Peak Temperature (T_P)	10-30 seconds	20-40 seconds
Ramp-down Rate	6°C/second maximum	6°C/second maximum
Time 25°C to Peak Temperature	6 minutes maximum	8 minutes maximum

Graph1: Solder Re-Flow Time-Temperature Function



MSW2060-206, MSW2061-206 & MSW2062-206 SP2T Switch Outline (Case Style 206)



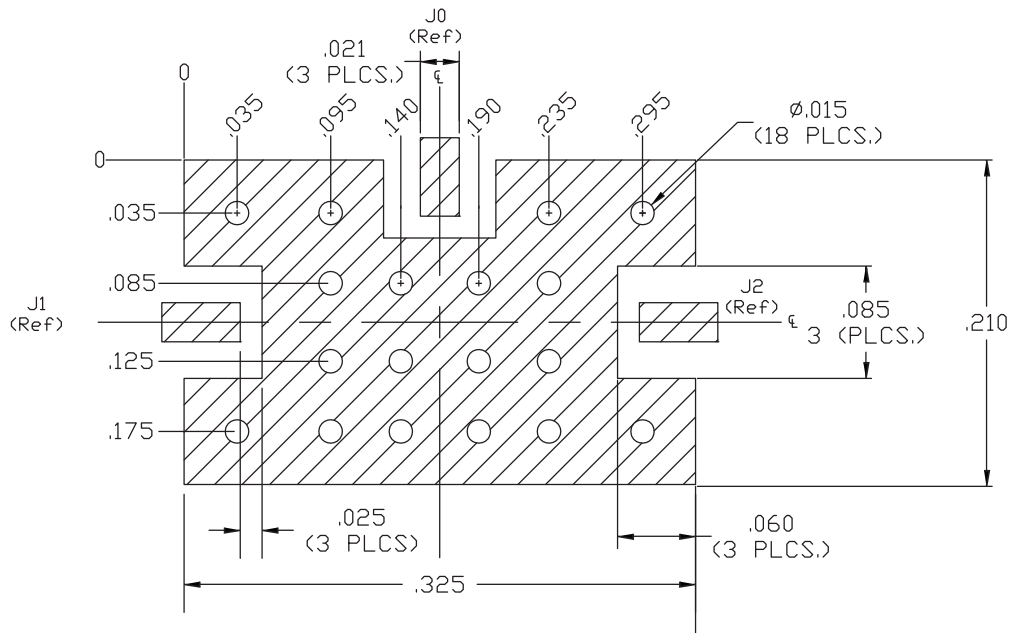
- NOTES:
 1. SUBSTRATE MATERIAL: 20 MIL THICK ALUMINA NITRIDE (ALN) RF COVER: BLACK CERAMIC.
 2. TOP SIDE AND BACKSIDE METALLIZATION: 40μ IN PLATED Au, 60μ IN PLATED Ni OVER Ti-Pd-Au.
 3. DIMENSION IN PARENTHESIS ARE IN MM.

Note: Thatched Metal Area on Circuit Side of Device is RF and D.C. Ground.

Thatched Area is RF, D.C., and Thermal Ground. Vias should be solid copper fill and gold plated for optimum heat transfer from backside of switch module through Circuit Vias to metal thermal ground.

SP2T PIN Diode Switches

RF Circuit Solder Footprint for Case Style 206 (CS206)



NOTES:
 1. RECOMMENDED RF CIRCUIT IS ROGERS,
 R04350B, 10 MILS THICK.

Hatched Area is RF, D.C., and Thermal Ground. Vias should be solid copper fill and gold plated for optimum heat transfer from backside of switch module through Circuit Vias to metal thermal ground.

Part Number Ordering Information:

Part Number	Packaging
MSW2060-206-T	Tube
MSW2060-206-R	Tape-Reel (Quantities of 250 or 500)
MSW2060-206-W	Waffle Pack
MSW2061-206-T	Tube
MSW2061-206-R	Tape-Reel (Quantities of 250 or 500)
MSW2061-206-W	Waffle Pack
MSW2062-206-T	Tube
MSW2062-206-R	Tape-Reel (Quantities of 250 or 500)
MSW2062-206-W	Waffle Pack
MSW2060-206-E	RF Evaluation Board
MSW2061-206-E	RF Evaluation Board
MSW2062-206-E	RF Evaluation Board
* RF Evaluation boards are rated at +45 dBm C.W. or Peak Incident Power due to the RF power rating values of the Passive L,C Bias Elements	

Aeroflex / Metelics, Inc.

54 Grenier Field Road, Londonderry, NH 03053
 Tel: (603) 641-3800
 Sales: (888) 641-SEMI (7364)
 Fax: (603)-641-3500

975 Stewart Drive, Sunnyvale, CA 94085
 Tel: (408) 737-8181
 Fax: (408) 733-7645

www.aeroflex.com/metelics metelics-sales@aeroflex.com

Aeroflex / Metelics, Inc. reserves the right to make changes to any products and services herein at any time without notice. Consult Aeroflex or an authorized sales representative to verify that the information in this data sheet is current before using this product. Aeroflex does not assume any responsibility or liability arising out of the application or use of any product or service described herein, except as expressly agreed to in writing by Aeroflex; nor does the purchase, lease, or use of a product or service from Aeroflex convey a license under any patent rights, copyrights, trademark rights, or any other of the intellectual rights of Aeroflex or of third parties.

Copyright 2010 Aeroflex / Metelics. All rights reserved.

ISO 9001:2008 certified companies



Our passion for performance is defined by three attributes represented by these three icons: solution-minded, performance-driven and customer-focused.