

IEC Appliance Inlet C14 with Filter, Line Switch 1- or 2-pole, PCB Mounting

Standard- or Medical-Filter



V-Lock

new



C14



70° C

**Description**

- Panel Mount:
Screw-on mounting on PCB from rear-side
- 3 Functions:
Appliance Inlet Protection class I, Line Switch 1- or 2-pole, Line filter in standard and medical version
- For PCB mounting

Approvals

- VDE Certificate Number: 40001522
- UL File Number: E72928

Characteristics

- Ultra-compact design
- All single elements are already wired
- Line switch non-illuminated or illuminated
- With EMC-shield
- Especially suitable for use in switching power supplies
Ideal for application with high transient loads
- Qualified for use in equipment according IEC/EN 60950

Other versions on request

- Fixing on PCB with self-tapping screws 3 mm or pre-inserted nuts M3
- Other rocker marking
- Illuminated green
- Medical version M80
- Capacitance CX1

ReferencesAlternative: version without line filter [DC21](#)Alternative: Standard version [DC21](#)**Weblinks**

[pdf-datasheet](#), [html-datasheet](#), [General Product Information](#), [Approvals](#), [RoHS](#), [CHINA-RoHS](#), [Mating Connectors](#), [e-Shop](#), [SCHURTER-Stock-Check](#), [Distributor-Stock-Check](#), [CAD-Drawings](#), [Accessories](#), [Detailed request for product](#)

Newly available variants corresponding to V-Lock mating cordset. The connector is equipped with a notch intended for use with the latching cordset. The cord latching system prevents against accidental removal of the cordset.

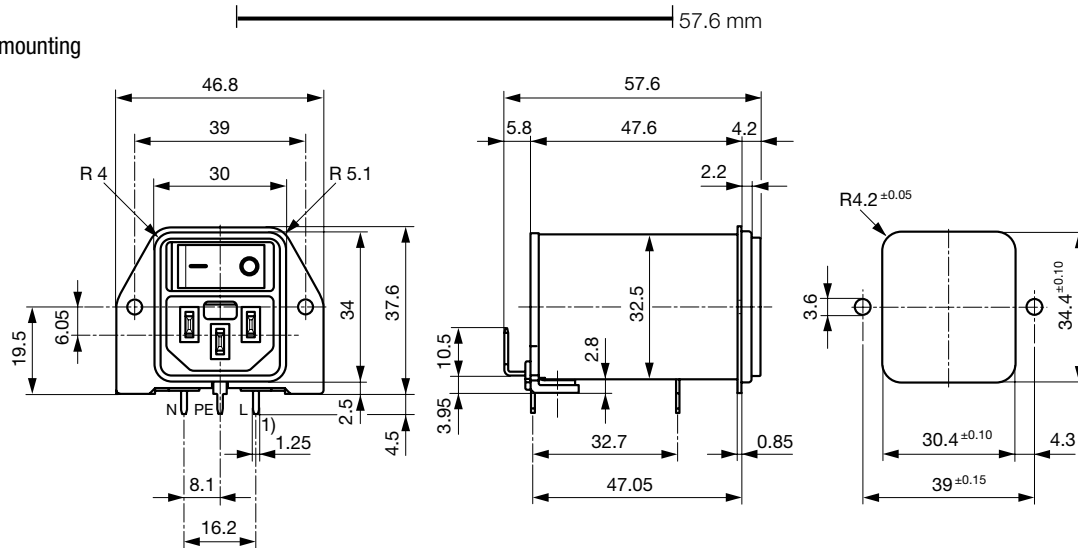
Technical Data

Ratings IEC	1 - 10A @ Ta 40 °C / 250VAC; 50Hz
Ratings UL/CSA	1 - 10A @ Ta 40 °C / 125VAC; 60Hz
Leakage Current	standard < 0.5mA (250V / 60Hz) medical < 5 µA (250 V / 60 Hz)
Dielectric Strength	> 1.7 kVDC between L-N > 2.7 kVDC between L/N-PE Test voltage (2 sec)
Allowable Operation Temp.	-25 °C to 85 °C
Climatic Category	25/085/21 acc. to IEC 60068-1
Degree of Protection	from front side IP 40 acc. to IEC 60529
Protection Class	Suitable for appliances with protection class I acc. to IEC 61140
Terminal	For PCB mounting ; Ground terminal: Quick connect terminals 6.3 x 0.8 mm angled to pin axis
Panel Thickness s	Screw: max 4 mm Mounting screw torque max 0.5Nm
Material: Housing	Thermoplastic, black, UL 94V-0

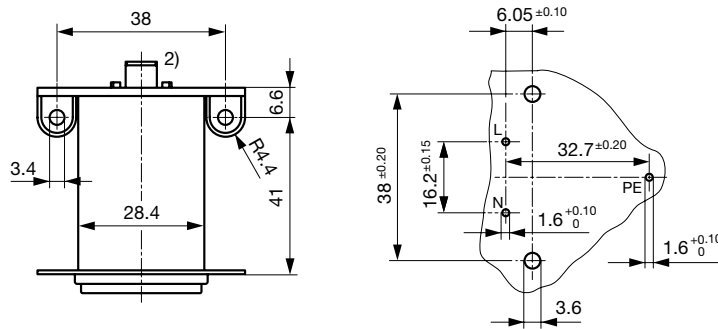
Appliance-Inlet/-Outlet	C14 acc. to IEC/EN 60320-2-2 UL 498 CSA C22.2 no. 42 (for cold conditions) pin-temperature 70 °C, 10A, Protection Class I
Line Switch	Rocker switch 1 or 2 pole, non-illuminated or illuminated red, acc. to IEC 61058-1 Technical Details
Line Filter	Standard and Medical Version, IEC 60939, IEC 60601-1, UL 1283, UL 544, EN 133 200, CSA C22.2 no. 8 Technical Details
MTBF	> 2'100'000h acc. to MIL-HB-217 F

Dimensions

Screw on PCB mounting



1) all pins



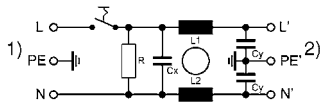
2) PE additionally as quick-connect terminal 6.3 x 0.8

Technical Data of Filter-Components

Rated Current [A]	Filter-Type	Inductances L [mH]	Capacitance CX [nF]	Capacitance CY [nF]	R [MΩ]
1	Standard Version	2 x 10	100	2.2	1
2	Standard Version	2 x 4	100	2.2	1
4	Standard Version	2 x 1.5	100	2.2	1
6	Standard Version	2 x 0.8	100	2.2	1
10	Standard Version	2 x 0.3	100	2.2	1
1	Medical Version (M5)	2 x 10	100	-	1
2	Medical Version (M5)	2 x 4	100	-	1
4	Medical Version (M5)	2 x 1.5	100	-	1
6	Medical Version (M5)	2 x 0.8	100	-	1
10	Medical Version (M5)	2 x 0.3	100	-	1

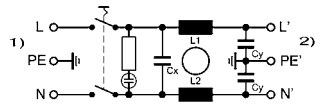
Diagrams

Standard filter 1-pole



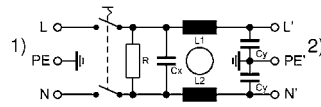
- 1) Line
- 2) Load

Standard filter 2-pole illuminated



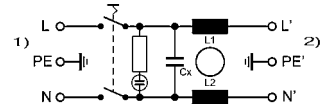
- 1) Line
- 2) Load

Standard filter 2-pole



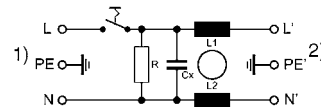
- 1) Line
- 2) Load

Medical Filter 2-pole (M5) illuminated



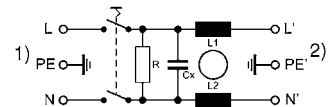
- 1) Line
- 2) Load

Medical filter 1-pole (M5)



- 1) Line
- 2) Load

Medical filter 2-pole (M5)



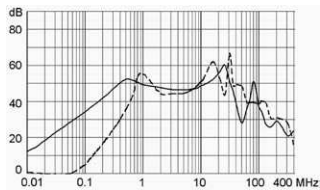
- 1) Line
- 2) Load

Attenuation Loss

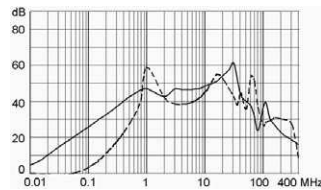
--- differential mode ____ common mode

Standard version

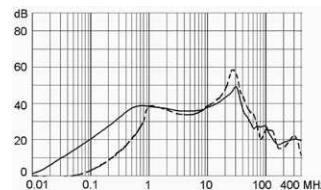
1 A



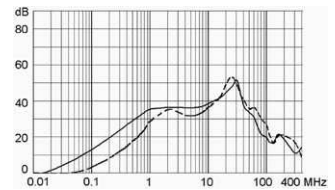
2 A



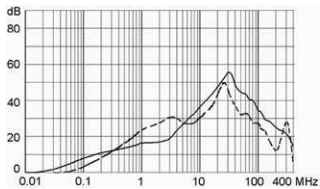
4 A



6 A

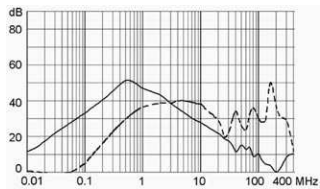


10 A

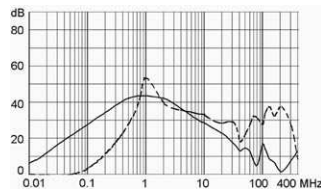


Medical version (M5)

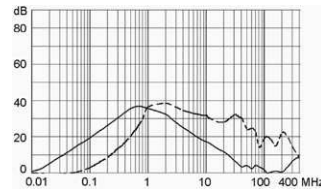
1 A



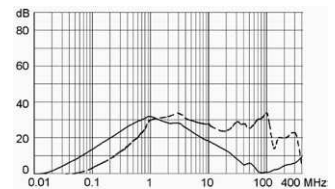
2 A



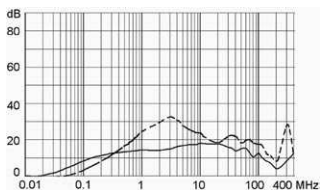
4 A



6 A



10 A



Variants

Rated Current [A]	Filter-Type	Line Switch	Illumination	Color	Order Number
1	Standard Version	1-pole		-	DC22.1111.111
2	Standard Version	1-pole		-	DC22.2111.111
4	Standard Version	1-pole		-	DC22.4111.111
6	Standard Version	1-pole		-	DC22.6111.111
10	Standard Version	1-pole		-	DC22.9111.111
1	Standard Version	2-pole		-	DC22.1121.111
2	Standard Version	2-pole		-	DC22.2121.111
4	Standard Version	2-pole		-	DC22.4121.111
6	Standard Version	2-pole		-	DC22.6121.111
10	Standard Version	2-pole		-	DC22.9121.111
1	Standard Version	2-pole	●	red	DC22.1123.111
2	Standard Version	2-pole	●	red	DC22.2123.111
4	Standard Version	2-pole	●	red	DC22.4123.111
6	Standard Version	2-pole	●	red	DC22.6123.111
10	Standard Version	2-pole	●	red	DC22.9123.111
1	Medical Version (M5)	2-pole		-	DC22.1221.111
2	Medical Version (M5)	2-pole		-	DC22.2221.111
4	Medical Version (M5)	2-pole		-	DC22.4221.111
6	Medical Version (M5)	2-pole		-	DC22.6221.111
10	Medical Version (M5)	2-pole		-	DC22.9221.111
1	Medical Version (M5)	2-pole	●	red	DC22.1223.111
2	Medical Version (M5)	2-pole	●	red	DC22.2223.111
4	Medical Version (M5)	2-pole	●	red	DC22.4223.111
6	Medical Version (M5)	2-pole	●	red	DC22.6223.111
10	Medical Version (M5)	2-pole	●	red	DC22.9223.111

Packaging unit 10 Pcs

Accessories

Description



Cord retaining kits
Cord retaining strain relief

Mating Outlets/Connectors

Category / Description

[Appliance Outlet Overview complete](#)



IEC Appliance Outlet F, Screw-on Mounting, Front Side, Solder Terminal	4787
IEC Appliance Outlet F, Snap-in Mounting, Front Side, Solder or Quick-connect Terminal	4788
IEC Appliance Outlet F or H, Screw-on Mounting, Front Side, Solder, PCB or Quick-connect Terminal	5091
IEC Appliance Outlet F or H, Screw-on Mounting, Front Side, Solder or Quick-connect Terminal	5092

[Appliance Outlet further types to DC22](#)

Connector Overview complete



IEC Connector C15, Rewireable, Straight	0101
IEC Connector C15A, Rewireable, Straight	0102
IEC Connector C15A, Rewireable, Straight	0102-G
IEC Connector C15A, Rewireable, Angled	0112
IEC Connector C13, Rewireable, Angled	4012

[Connector further types to DC22](#)

...

Power Cord Overview complete



Power Cord with IEC Connector C13, Angled	0311
Power Cord with IEC Connector C13, Angled	3011
Power Cord with IEC Connector C13, Angled	3012
Power Cord with IEC Connector C13, Angled	3013
Power Cord with IEC Connector C13	3020

[Power Cord further types to DC22](#)

...