

Magnetically Compensated Choke, 1- and 3-phase



**Description**

- Current compensated choke
- 1- or 3-phase choke
- THT terminals or wire leads
- Flange for mounting onto printed circuit board
- Fully potted resin

**Standards**

- EN 60938
- UL 1283
- CSA 22.2 no 8

**Applications**

- Attenuation of common mode interferences
- May also be used in direct current applications where magnetic compensation is required
- Designed for 230/400 VAC applications

**Weblinks**

[pdf-datasheet](#), [html-datasheet](#), [General Product Information](#), [Approvals](#), [RoHS](#), [CHINA-RoHS](#), [e-Shop](#), [SCHURTER-Stock-Check](#), [Distributor-Stock-Check](#), [Detailed request for product](#)

**Technical Data**

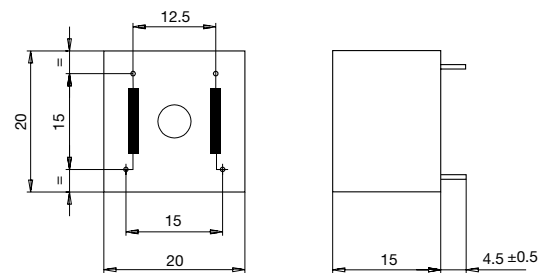
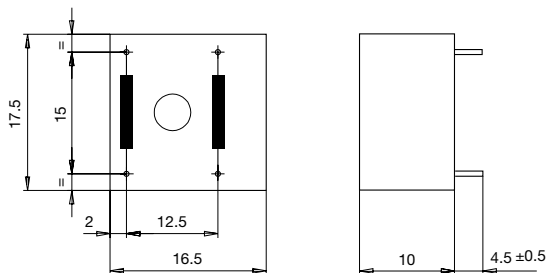
|                           |                           |
|---------------------------|---------------------------|
| Rated voltage             | up to 440 VAC             |
| Rated Current             | 0.5 - 15 A @ Ta 40 °C     |
| Rated inductance          | 1 - 20 mH, Tol. -30% +50% |
| Power Operating Frequency | 50 - 400 Hz               |
| Terminal technic          | THT, Flexible wire        |
| Weight                    | 6 - 163 g                 |
| Material: Housing         | UL 94V-0                  |
| Sealing Compound          | UL 94V-0                  |

|                           |  |
|---------------------------|--|
| Test Voltage              | 1.8 kV, 50 Hz, 1 min, winding to winding |
| Isolation Voltage         | 2 kV eff., winding to ambient            |
| Climatic Category         | 25/100/21 acc. to IEC 60068-1            |
| Allowable Operation Temp. | -25 °C to 100 °C                         |

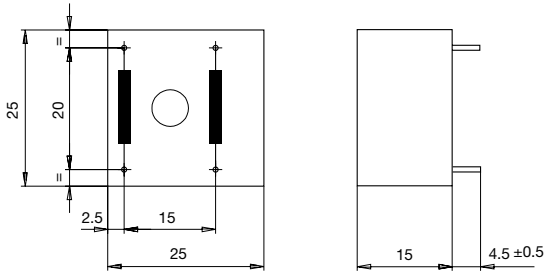
**Dimensions**

Case 03

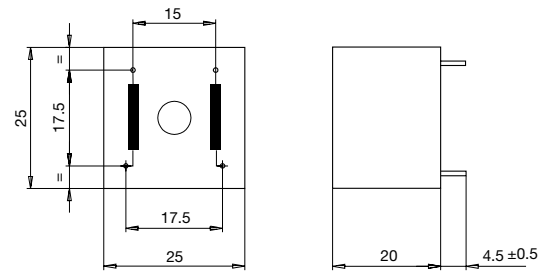
Case 07



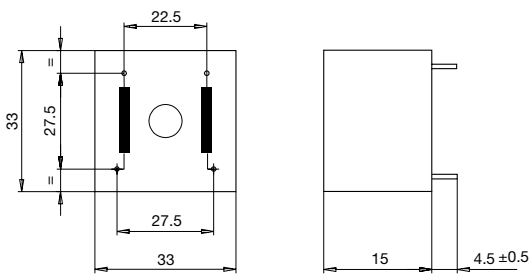
Case 11



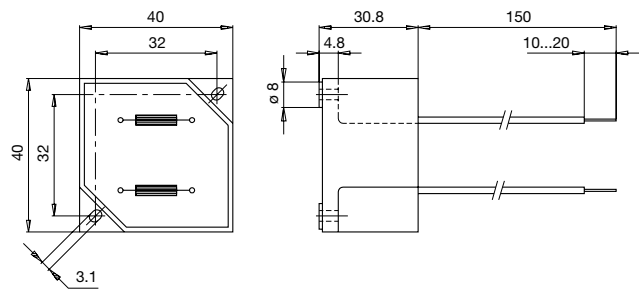
Case 12



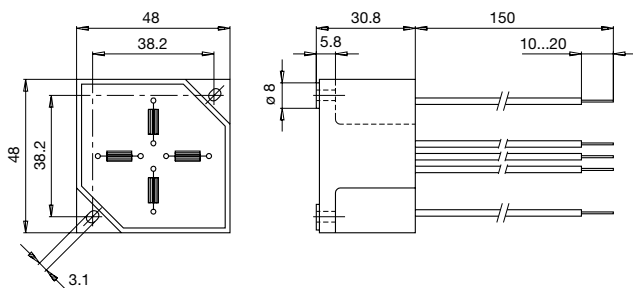
Case 20



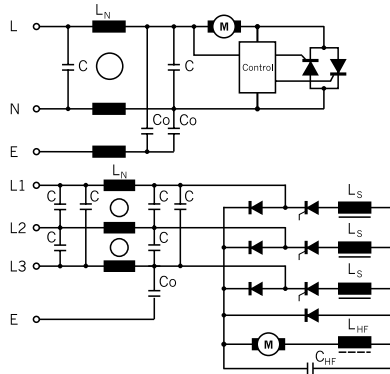
Case 25-2



Case 29-4



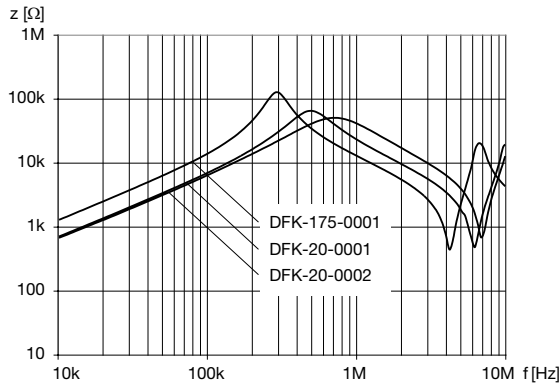
Diagrams



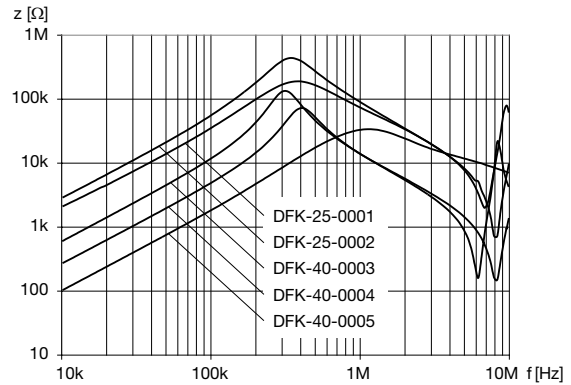
$L_N$ : Radio interference suppression choke (magnetically compensated DF)  
 $L_S$ : Radio interference suppression choke (magnetically saturated DFS/DFL)

Impedance curves

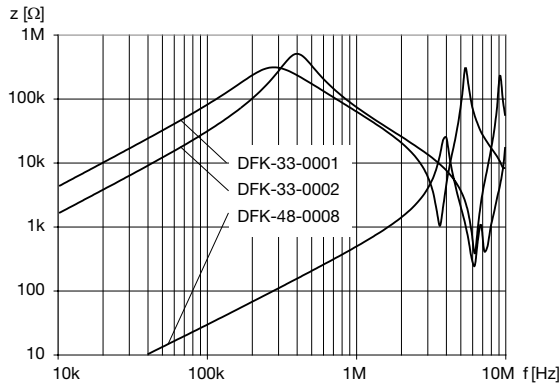
DFK-175-xxxx, DFK-20-xxxxx



DFK-25-xxxx, DFK-40-xxxxx



DFK-33-xxxx, DFK-48-xxxxx



Variants

| $I_n$ [A] | $L_n$ [mH] | $R_{cu}$ [mΩ] | $f_{RES}$ [MHz] | Copper $\phi$ [mm] | Weight [g] | Housing | Packing unit [pcs.] | Order Number |
|-----------|------------|---------------|-----------------|--------------------|------------|---------|---------------------|--------------|
| 0.5       | 10         | 900           | 0.5             | 0.5                | 6          | 03      | 100                 | DFK-175-0001 |
| 1         | 10         | 500           | 0.7             | 0.6                | 12         | 07      | 150                 | DFK-20-0001  |
| 1         | 20         | 500           | 0.5             | 0.6                | 12         | 07      | 150                 | DFK-20-0002  |
| 1         | 10         | 510           | 0.5             | 0.6                | 18         | 11      | 50                  | DFK-25-0001  |
| 2         | 10         | 250           | 0.5             | 0.6                | 18         | 12      | 50                  | DFK-25-0002  |
| 2         | 20         | 250           | 0.3             | 0.6                | 37         | 20      | 45                  | DFK-33-0001  |
| 3         | 10         | 150           | 0.38            | 0.6                | 37         | 20      | 45                  | DFK-33-0002  |
| 6         | 4          | 27            | 0.4             | -                  | 127        | 25-2    | 10                  | DFK-40-0003  |
| 10        | 2          | 9             | 1.45            | -                  | 127        | 25-2    | 10                  | DFK-40-0004  |
| 15        | 1          | 10            | 1.45            | 2.5 x 2.5          | 127        | 25-2    | 10                  | DFK-40-0005  |
| 6         | 4 x 1.5    | 20            | 0.2             | 1.5 x 1.5          | 163        | 29-4    | 10                  | DFK-48-0008  |