

AC Filter Cost Optimized

Standard- or Medical-Filter



### Description

- Chassis:  
Screw-on mounting, from top
- Line filter in standard and medical version, 1-stage, standard attenuation
- Quick connect terminals 6.3 x 0.8 mm

### Approvals

- VDE Certificate Number: 40004673
- UL File Number: E72928

### Characteristics

- Designed for standard applications
- Protection against interference voltage from the mains  
Possible interferences generated in the equipment are strongly attenuated
- Qualified for use in equipment according IEC/EN 60950

### Other versions on request

- Version with ZNR-varistor for overvoltage protection

### References

Alternative: Standard version

### Weblinks

[pdf-datasheet](#), [html-datasheet](#), [General Product Information](#), [Approvals](#), [RoHS](#), [CHINA-RoHS](#), [Mating Connectors](#), [e-Shop](#), [SCHURTER-Stock-Check](#), [Distributor-Stock-Check](#), [CAD-Drawings](#), [Accessories](#), [Detailed request for product](#)

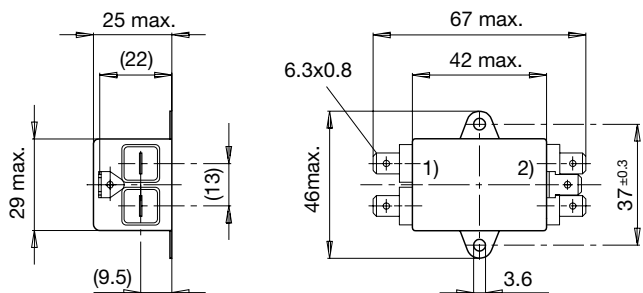
### Technical Data

Ratings IEC	1 - 10A @ Ta 40 °C / 250 VAC; 50Hz
Ratings UL/CSA	1 - 10A @ Ta 40 °C / 125 VAC; 60Hz
Leakage Current	standard < 0.25 mA (250V / 60Hz)
Dielectric Strength	1.7 kVDC between L-N 2.7 kVDC between L/N-PE Test voltage (2 sec)
Allowable Operation Temp.	-25 °C to 100 °C
Climatic Category	25/100/21 acc. to IEC 60068-1
Protection Class	Suitable for appliances with protection class I acc. to IEC 61140
Terminal	Quick connect terminals 6.3 x 0.8 mm
Material: Housing	Aluminum

Line Filter	Standard and Medical Version, IEC 60939, IEC 60601-1, UL 1283, UL 544, EN 133 200, CSA C22.2 no. 8 <a href="#">Technical Details</a>
MTBF	> 200'000h acc. to MIL-HB-217 F

## Dimensions

Case 41



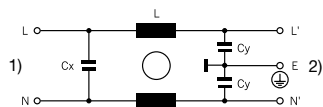
1) Line  
2) Load

## Diagrams

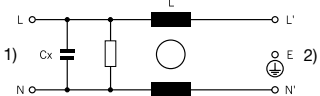
Standard version

Medical version (M5)

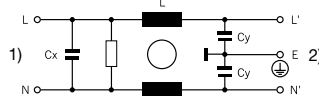
Medical version (M80)



1) Line  
2) Load



1) Line  
2) Load



1) Line  
2) Load

## Attenuation Loss

- - - differential mode    \_\_\_\_ common mode

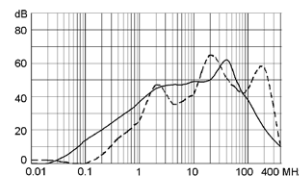
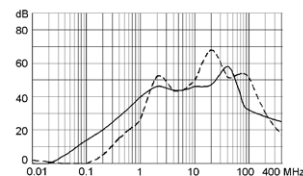
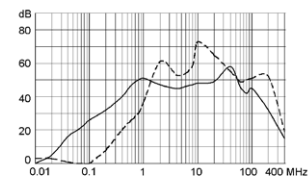
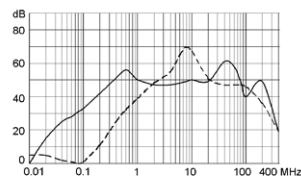
Standard version

1 A

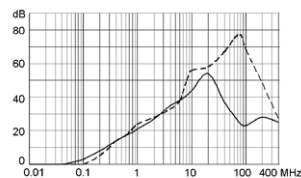
2 A

4 A

6 A

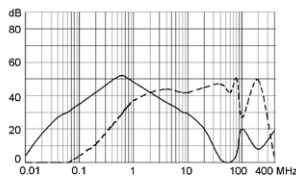


10 A

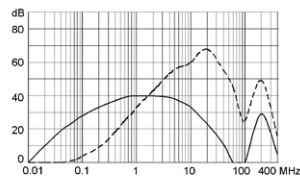


## Medical version (M5)

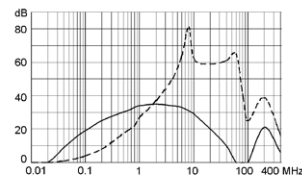
1 A



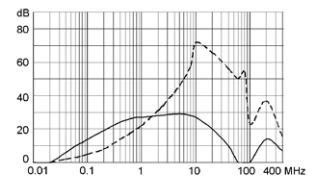
2 A



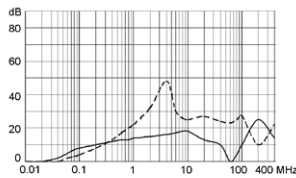
4 A



6 A

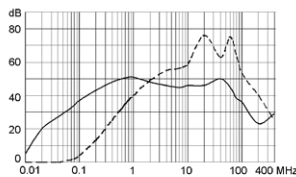


10 A

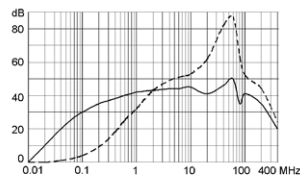


## Medical version (M80)

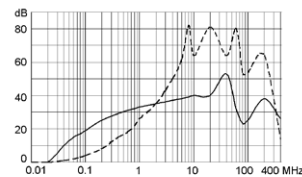
1 A



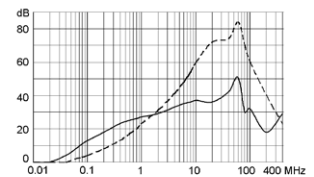
2 A



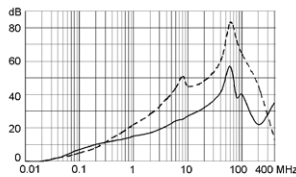
4 A



6 A



10 A



## Variants

Rated Current [A]	Filter-Type	Leakage Current [mA]	L [mH]	Cx (X2) [nF]	Cy (Y2) [nF]	Weight [g]	Housing	Order Number
1	Standard Version	0.25	2 x 10	68	2.2	-	41	5500.2026
2	Standard Version	0.25	2 x 4	68	2.2	-	41	5500.2027
4	Standard Version	0.25	2 x 1.5	68	2.2	-	41	5500.2028
6	Standard Version	0.25	2 x 0.8	68	2.2	-	41	5500.2029
10	Standard Version	0.25	2 x 0.3	68	2.2	-	41	5500.2030
1	Medical Version (M5)	0.005	2 x 10	68	-	-	41	5500.2077
2	Medical Version (M5)	0.005	2 x 4	68	-	-	41	5500.2078
4	Medical Version (M5)	0.005	2 x 1.5	68	-	-	41	5500.2079
6	Medical Version (M5)	0.005	2 x 0.8	68	-	-	41	5500.2080
10	Medical Version (M5)	0.005	2 x 0.3	68	-	-	41	5500.2081
1	Medical Version (M80)	0.08	2 x 10	68	0.47	-	41	5500.2089
2	Medical Version (M80)	0.08	2 x 4	68	0.47	-	41	5500.2090
4	Medical Version (M80)	0.08	2 x 1.5	68	0.47	-	41	5500.2091
6	Medical Version (M80)	0.08	2 x 0.8	68	0.47	-	41	5500.2092
10	Medical Version (M80)	0.08	2 x 0.3	68	0.47	-	41	5500.2093

Packaging unit

25 Pcs