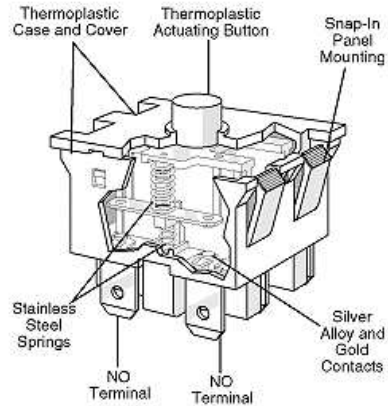


## Two Circuit Line Interrupt Panel Mount Pushbutton Switch

# FA Series



### Features

- Compact size 1.26" L x 0.709" W
- Low operate force (400 grams max.)
- Choice of standard housing or button barrier
- Long stroke (Overtravel 4.3mm min.)
- Double make shorting bars
- Agency approved extended life standard
- International approval standard
- 4mm (0.157") minimum contact gap

### Electrical Ratings and Operating Life

Switch Series	According to EN61058		According to UL1054	
	Nominal Load	Operation cycles	Nominal Load	Operation cycles
FA1	16(4) A 250VAC, 6A 28VDC	50,000	16A 125/250VAC, 6A 30VDC, 1A 50 VDC	100,000
FA2	10(3) A 250VAC, 3A 28VDC	50,000	10.1A 125/250VAC, 30A 30VDC	100,000
FA3	0.1 (0.5) A 250VAC 0.25A 28VDC	50,000	0.1A 125/250VAC 0.25A 30VDC	100,000
FA4	Mix of FA3 and FA1	50,000	Mix of FA3 and FA1	100,000

Technical Specifications		Material Specifications	
Temperature Rating:	-25°C to + 85°C	Case:	Thermoplastic Nylon
Flammability Rating:	UL94V-0	Actuator button:	Thermoplastic Nylon
Mechanical Life:	1,000,000 cycles min.	Terminals:	FA1, FA2: Copper (Silver Plated) FA3: Copper Alloy
Electrical Life:	100,000 cycles min.	Moving Blade:	FA1, FA2: Copper (Silver Plated) FA3: Copper
Insulation Resistance:	1000MΩ min (DC 500V) (As initial value)	Springs:	Stainless Steel
Dielectric Strength:	4000 V AC – for 1 minute	Contacts:	FA1, FA2: Silver Alloy FA3: Silver (Gold Plated)
Vibration Proof:	10-55 Hz Peak to peak amplitude		
Shock Proof:	294 m/s <sup>2</sup>		
UL File Number:	E23301		

RoHS Compliant

Specifications subject to change without notice

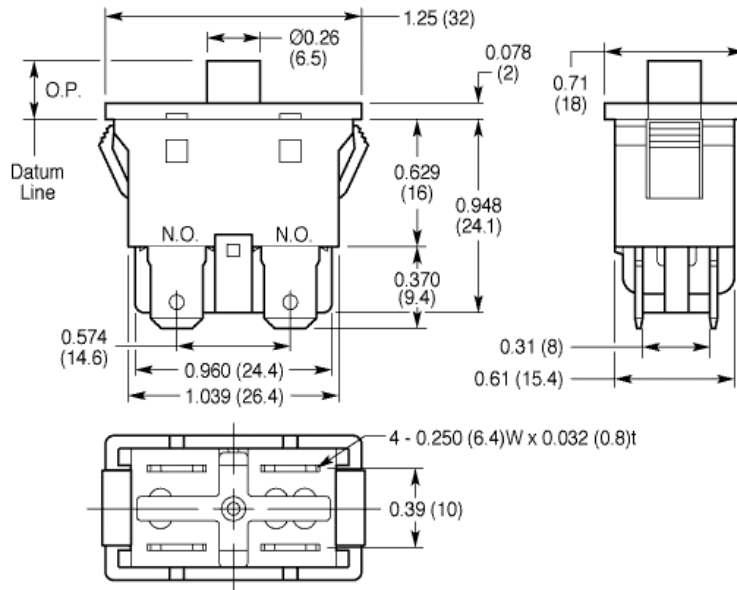


## Two Circuit Line Interrupt Panel Mount Pushbutton Switch

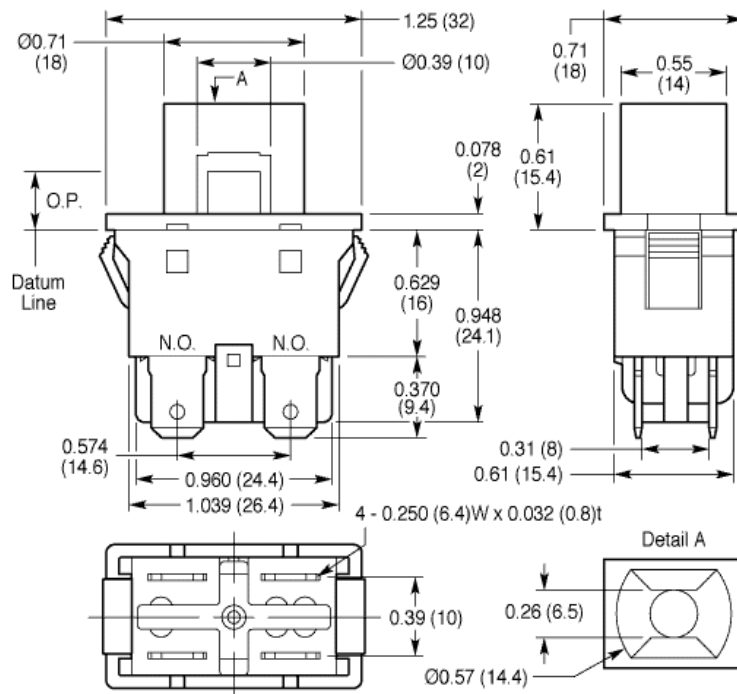
# FA Series

Dimensions inches(mm)

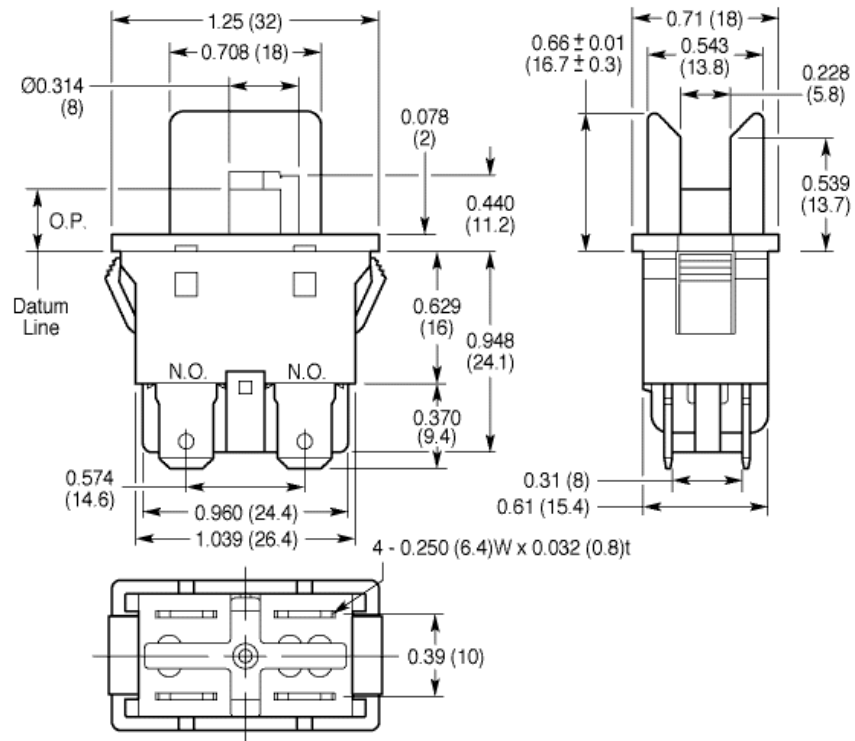
Case Style 'A'



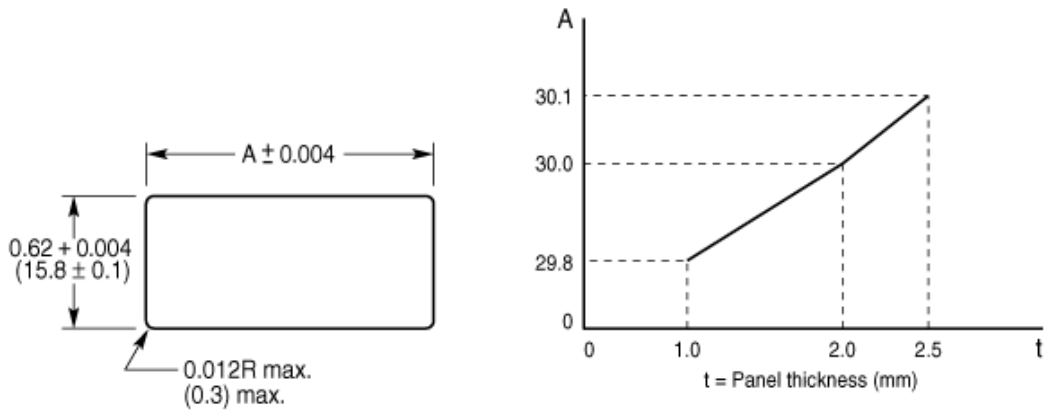
Case Style 'B'



### Case Style 'C'



### Panel Cutout Detail



Specifications subject to change without notice

## Operating Characteristics

Switch Type	Operate Force Max cN	Operate Point mm	Overtravel Min. mm	Total Travel Force Max cN	Rest Position* mm
FA <input type="checkbox"/> <input type="checkbox"/> -AA <input type="checkbox"/> <input type="checkbox"/>	392	7.2 +/- 0.5	4.3	686	9.6 +/- 0.5
FA <input type="checkbox"/> <input type="checkbox"/> -AB <input type="checkbox"/> <input type="checkbox"/>	588	7.2 +/- 0.5	4.3	981	9.6 +/- 0.5

\* Measured from Datum Line. Refer to dimensional drawing.

## Ordering Information

Code	cULus	VDE, Semko, TUV
1	16A 125/250VAC 6A 30VDC, 1A 50VDC	16(4)A 250VAC 6A 28VDC
2	10.1A 125/250VAC 30A 30VDC	10(3) 250VAC 3A 28VDC
3	0.1A 125/250VAC 0.25A 30VDC	0.1(0.05)A 250VAC 0.25A 28VDC
4	Code 1 and Code 3	

Code	Life Cycles
L	cULus approved 100,000 cycles

Code	Case
A	Without actuator guide
B	Actuator guard square type
C	Actuator guard slit type

Code	Terminal Type
1	0.187" x 0.020"*
2	0.250" x 0.032"
3	0.187" * and 0.250"

\* 0.187" QC terminals are not available with Rating Code 1

Code	Circuit Configuration
2	DPST - NO x 2
3	SPST - NO x 1

Code	Operating Force cN max.
A	392
B	588

## Contact

Call, fax or visit our Website for more information.

**ZF Electronics Corporation**  
11200 88th Avenue  
Pleasant Prairie, WI 53158

Phone: 262.942.6500  
Web: [www.cherrycorp.com](http://www.cherrycorp.com)  
Email: [cep\\_sales@zf.com](mailto:cep_sales@zf.com)  
Fax: 262.942.6566

The manufacturer accepts no liability for errors or non-availability, and reserves the right to change specifications without prior notice.

Technical data relates to product specifications only. Features may differ from those described. Only drawings combined with product specifications shall be deemed binding.

© 2007 ZF Electronics Corporation

Last Updated: 05/4/11

