

GEARTOOTH SPEED SENSOR

GS101205

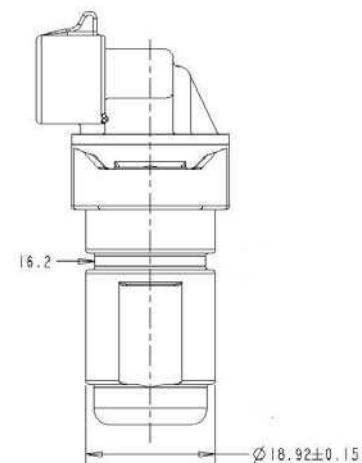
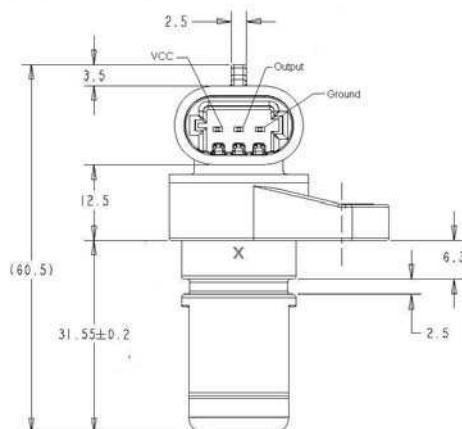
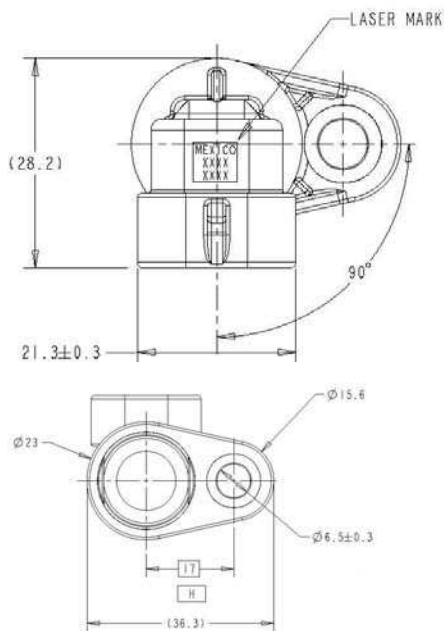
Flange mount gear sensor rated to 140°C



Description

The GS101205 is a self-adjusting digital output Hall Effect device used in applications where near zero speed sensing (non power-up recognition) is required. This feature also compensates for target run out. The single hall design is immune to alignment issues allowing unlimited mounting positions.

Dimensions mm



Features and Benefits

- Capable of operating in high temp environments up to 150°C.(contact factory for details)
- Designed to meet IEC60529 IP67 standard for immersion.
- Resistant to fuels, solvents and lubricants associated with engines, transmissions, brakes and chassis systems.
- ESD resistance to 15kV (contact discharge)
- Mating connector: Delphi 12162280
- Accepts a standard SAE AS 568B-016 o-ring.

Applications

- Transmission speed
- Wheel speed
- Engine speed
- Anti-lock braking systems

GEARTOOTH SPEED SENSOR

GS101205

Mechanical Specifications

Airgap	1.5mm (with Cherry test gear)
Maximum Installation Torque	50 in-lbs (for a ¼ - 20 bold or M6 x 1)

Electrical Specifications

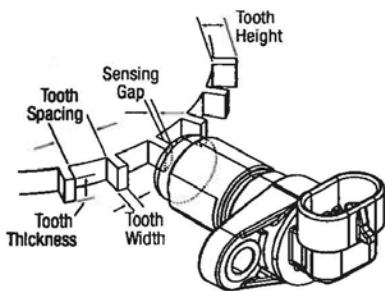
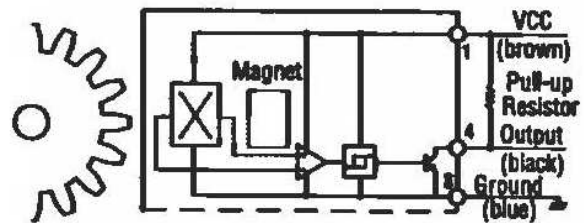
Operating Voltage Range	5-24 VDC
Supply Voltage	5-24 VDC
Supply Current	6 mA max
Output Saturation Voltage	600 mV max
Output Current	25 mA max
Operating Temperature	-40° to +140°C*
Storage Temperature Range	-40° to +150°C
Output Rise time	10µS
Output Fall time	10µS
Bulk Current Injection	SAE J1113-4 (250kHz to 500Mhz; 100mA/m)
Conduction and Coupling	SAE J1113-12 (± 200V)
Electronic Discharge	SAE J1113-13 (±14kV)
Immunity to Magnetic Fields	SAE J1113-22 (600 microT AC field; 5Hz to 2kHz; .2mT & 1mT DC field)
Radiated Emissions	SAE J1113-23
Immunity to AC Fields	SAE J1113-25 (15kV/m)
Radiated Emissions	SAE J1113-41 (Class 4)
Maximum Speed	10kHz (with Cherry target)

Water Immersion	IEC60529 IP67
Dust, Sand and Gravel Bombardment	SAE J1455 4.7.3
Vibration	Sinusoidal vibration max 15g's from 40 to 2000 Hz
Mechanical Shock	18 shocks at 50g's 11ms per Mil Std 202F

Recommended external pull-up resistor:

Volts (DC)	5	9	12	15
Ohms	1000	1800	2400	3000

Open Collector Sinking Block Diagram



For best results, we recommend targets made from low carbon cold rolled steel. Other factors that influence sensor performance include geartooth height and width, space between teeth, shape of the teeth and thickness of the target. As a general guideline, consider a target with the following minimum parameters:

Tooth Height	Tooth Width	Distance Between Teeth	Target Thickness
.200"	.100"	.400"	.250"

Contact

Call, fax or visit our website
For more information.

ZF Electronics Corporation
11200 88th Avenue
Pleasant Prairie, WI 53158

Phone: 262.942.6500
Web: www.cherrycorp.com

E-Mail: cep_sales@zf.com
Fax: 262.942.6566

Specifications subject to change without notice.

© 2008 ZF Electronics Corporation Revised 021213

