

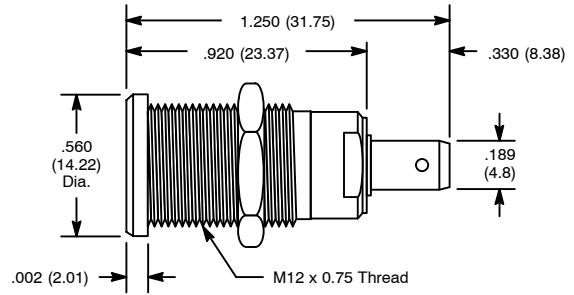
# 4mm Panel Socket, 4.8mm Tab, Hex Nut

## Features

- Fully Insulated
- Nickel Plated Contacts and Hardware
- Accepts Most Types of Shrouded and Unshrouded 4mm Plugs



TL-014



NTE Type No.	Color	Diag No.
72-037	Black	TL-014
72-038	Blue	TL-014
72-039	Green	TL-014
72-040	Red	TL-014
72-041	White	TL-014
72-042	Yellow	TL-014

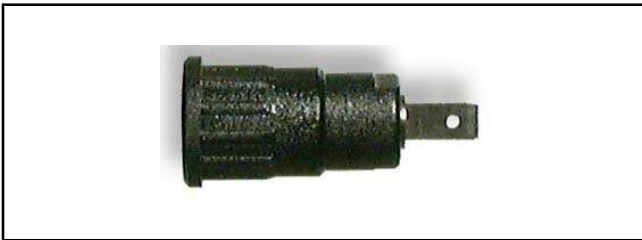
## Specifications

IEC 1010 Rating: 1000V CAT2  25 Amps  
 Mounting Hole: .472" (12mm)

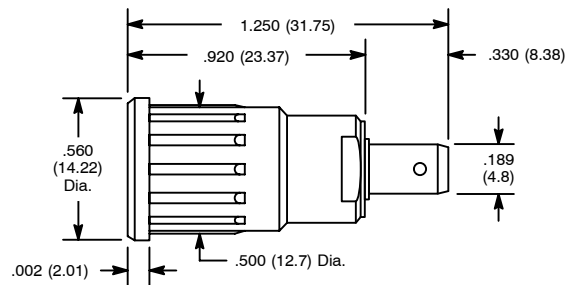
# 4mm Panel Socket, 4.8mm Tab, Push-In

## Features

- Fully Insulated
- Nickel Plated Contacts and Hardware
- Accepts Most Types of Shrouded and Unshrouded 4mm Plugs



TL-015



NTE Type No.	Color	Diag No.
72-043	Black	TL-015
72-044	Blue	TL-015
72-045	Green	TL-015
72-046	Red	TL-015
72-047	White	TL-015
72-048	Yellow	TL-015

## Specifications

IEC 1010 Rating: 1000V CAT2  25 Amps  
 Mounting Hole: .472" (12mm)