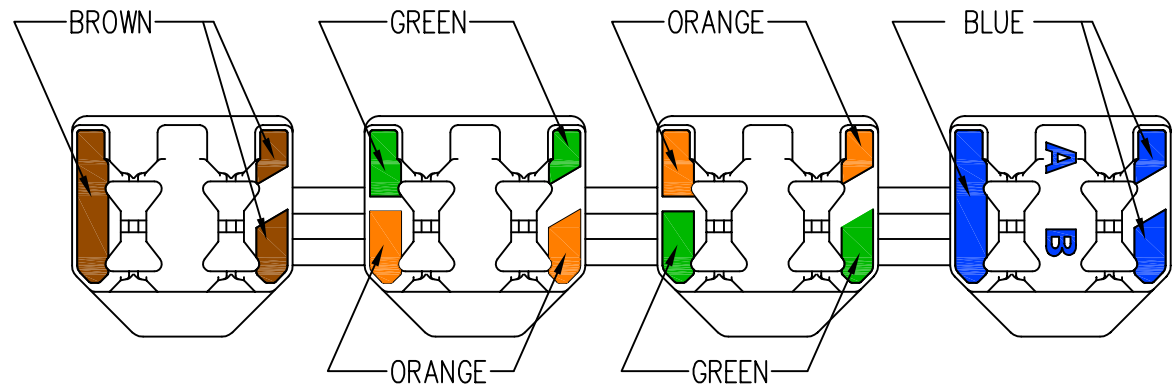
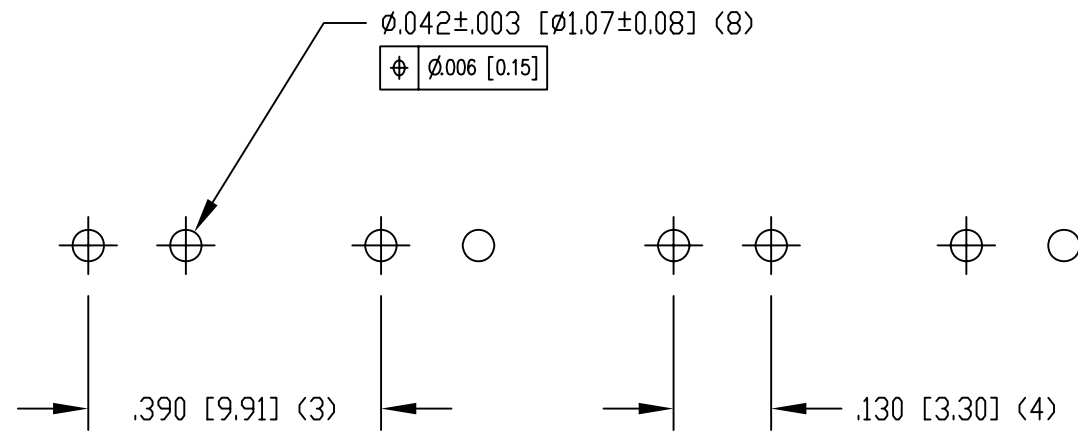
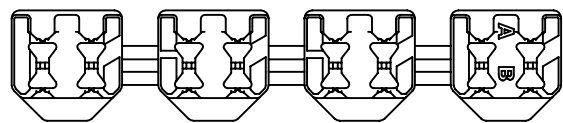


| DATE | REV | ECN | APP'D. BY |
|----------|-----|------|-----------|
| 9-16-09 | A0 | 8823 | DHG |
| 10-02-09 | A1 | 8835 | DHG |



COLOR CODE DETAIL



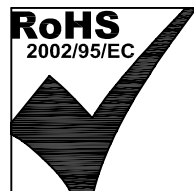
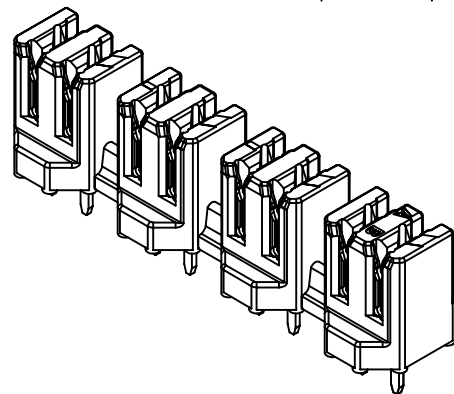
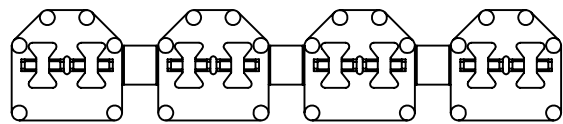
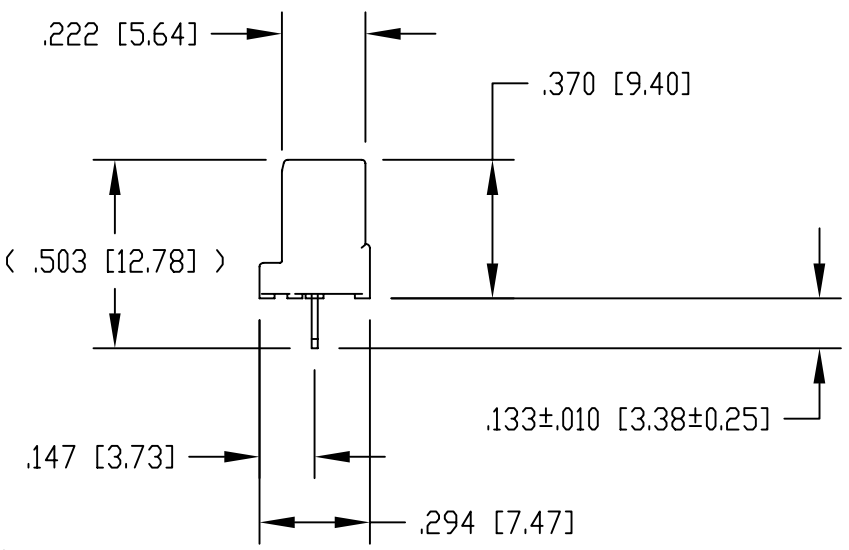
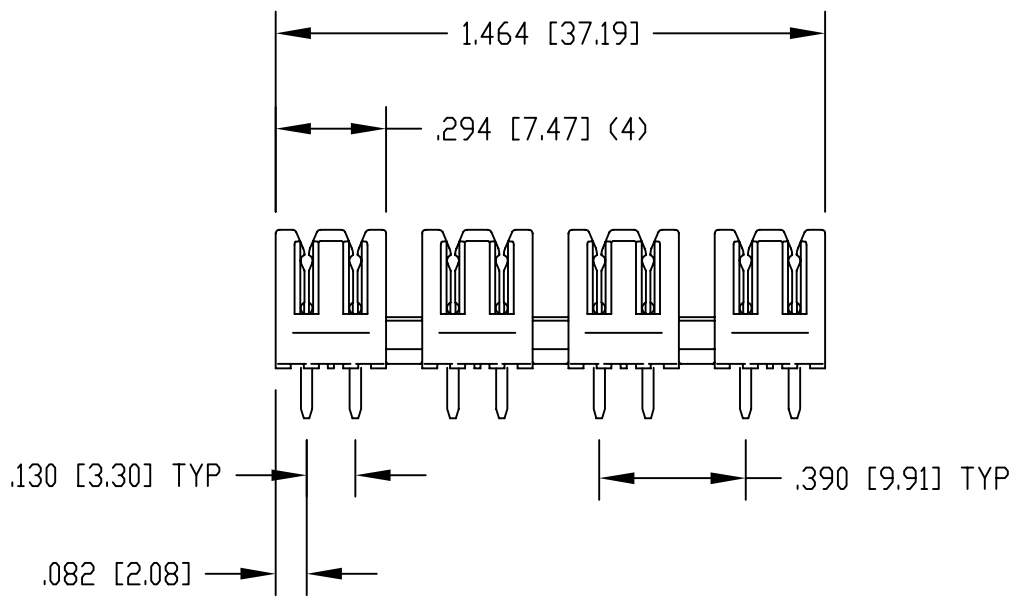
P.C.B. RECOMMENDED HOLE LAYOUT
SEEN FROM COMPONENT SIDE

ALL CENTERLINE DIMENSIONS ARE BASIC.

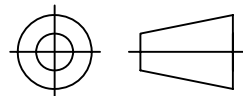
NOTES:

- CONNECTOR MATERIALS:
HOUSING: THERMOPLASTIC UL94 V-0
CONTACTS: COPPER ALLOY
CONTACT PLATING: TIN
- DESIGNED FOR CATEGORY 6A APPLICATIONS.
- IDC CONTACTS TERMINATE 22 AWG TO 26 AWG SOLID CONDUCTOR WIRE.
- FOR PRODUCT SPECIFICATION SEE PR031-01

| |
|--------------|
| SS-51000-004 |
| PART NUMBER |



THIRD ANGLE PROJECTION



DO NOT SCALE DRAWING
DRAWING IS SUBJECT TO
CHANGE WITHOUT NOTICE

DIMENSIONS: INCHES [METRIC]
UNLESS OTHERWISE SPECIFIED
TOLERANCES ARE ± 0.005 [0.13]
ANGLES ARE $\pm 1^\circ$

SHEET NO. 1 OF 1

Bel Stewart Connector

11118 Susquehanna Trail South
Glen Rock, PA 17327-9199
(717) 235-7512 Fax: (717) 235-7954 <http://www.stewartconnector.com>

TITLE: CATEGORY 6A, 4 PAIR PUNCHDOWN BLOCK
MARKED WITH COLOR CODE

THIS DRAWING AND THE SUBJECT MATTER SHOWN THEREON
ARE CONFIDENTIAL AND THE PROPRIETARY PROPERTY OF
BEL STEWART CONNECTOR AND SHALL NOT BE REPRODUCED,
COPIED, OR USED IN ANY MANNER WITHOUT PRIOR WRITTEN
CONSENT OF BEL STEWART CONNECTOR. THE SUBJECT
MATTER MAY BE PATENTED OR A PATENT MAY BE PENDING.

| | |
|------------------|--------------|
| DRN BY: DHG | DATE 3-23-07 |
| APPD BY: TRM | DATE 3-23-07 |
| DWG NO. CT510004 | REV. A1 |

REV. 4/15/03