

THE INFORMATION CONTAINED HEREIN IS CONSIDERED 'PROPRIETARY' TO BEL FUSE INC. AND SHALL NOT BE COPIED, REPRODUCED OR DISCLOSED WITHOUT THE WRITTEN APPROVAL OF BEL FUSE INC.

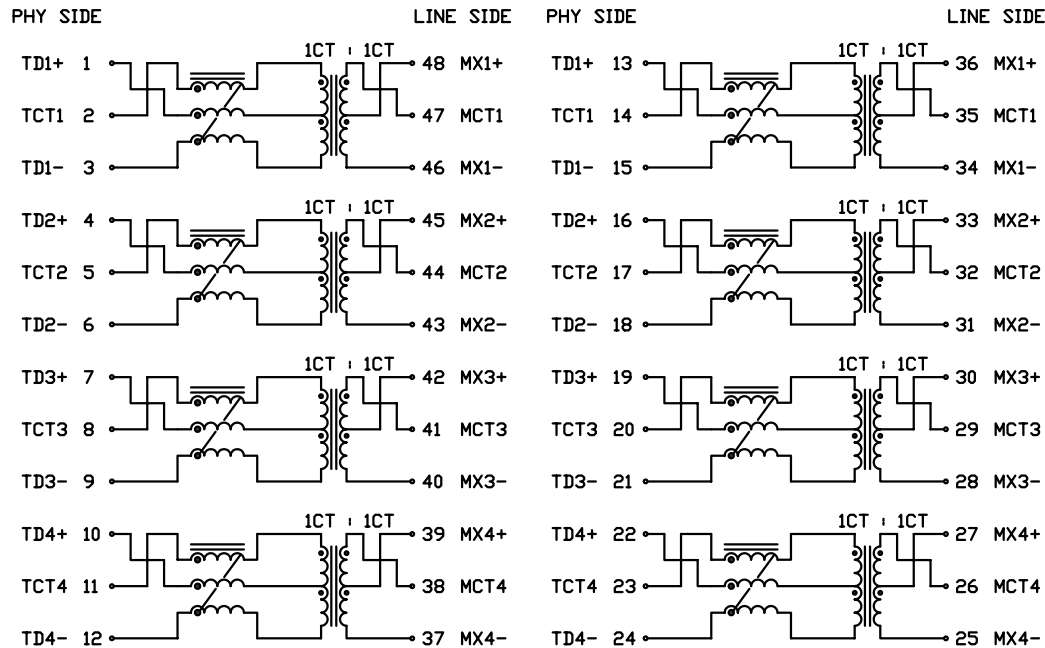
ELECTRICAL CHARACTERISTICS @25°C



SCHEMATIC

PORT 1

PORT 2



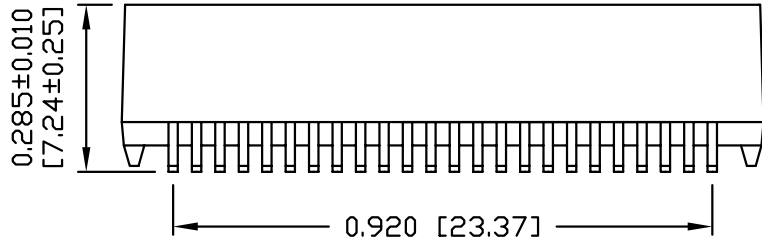
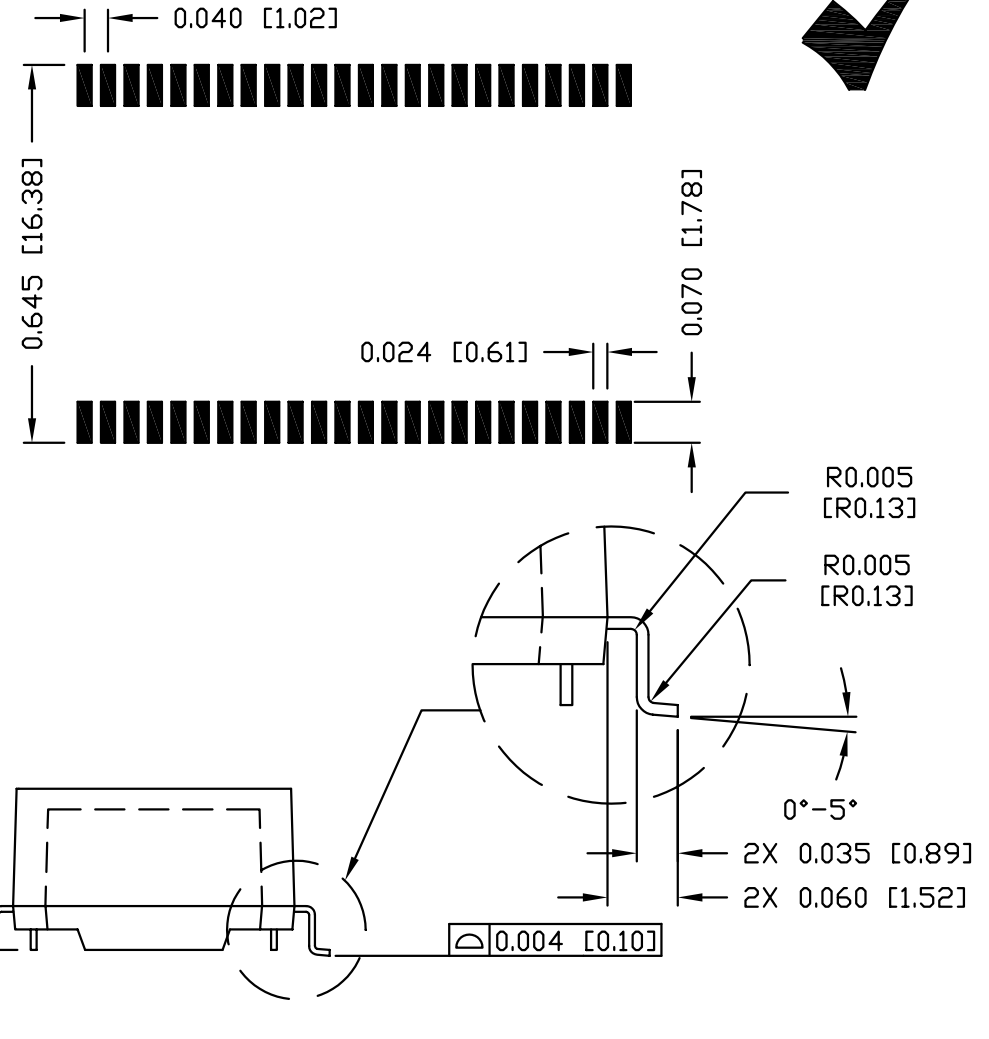
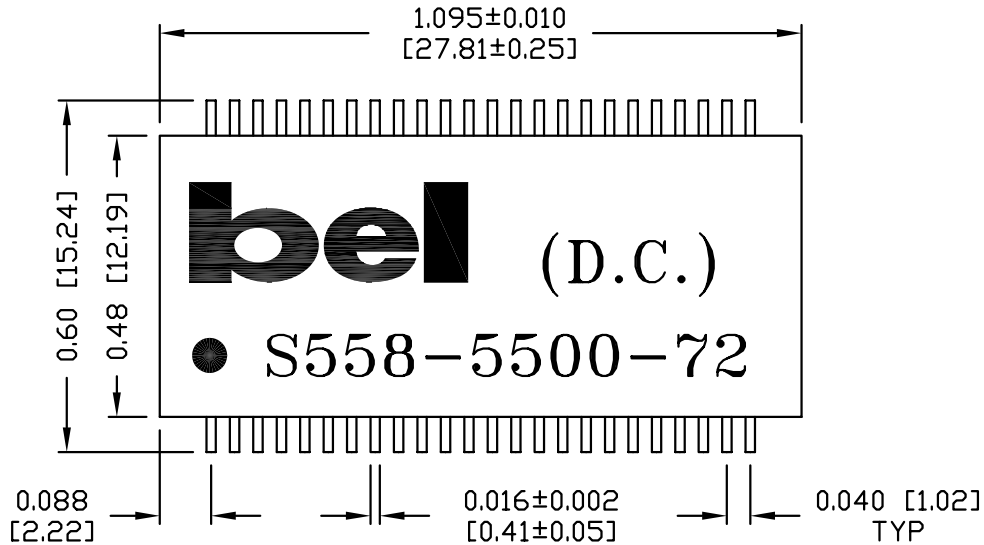
TURNS RATIO PHY : LINE  POLARITY  □CL -40°C TO +85°C -40°C TO +85°C	1CT : 1CT ±2%  PER DOT CONVENTION  100kHz, 100mV 350uH MIN WITH 11mA DC BIAS 120uH MIN WITH 19mA DC BIAS
DC RESISTANCE (1/2 WINDING)  INTERWINDING CAPACITANCE, C <sub>ww</sub>  INSERTION LOSS 0.3MHz - 1MHz 1MHz - 100MHz 100MHz - 125MHz  RETURN LOSS @100ΩHM 0.5MHz - 40MHz 40MHz - 100MHz  CROSSTALK 0.3MHz - 100MHz  CM TO CM REJ 0.3MHz - 100MHz  CM TO DM REJ 0.3MHz - 100MHz	0.35 ΩHM MAX  @1MHz, 20mV 30pF MAX  1.1dB MAX 1.0dB MAX 1.2dB MAX  18dB MIN 12-20LOG(f/80MHz)dB MIN  33-20LOG(f/100MHz)dB MIN  30dB MIN  35dB MIN  600mA MAX @57VDC CONTINUOUS  1500 Vrms

ORIGINATED BY	DATE	TITLE	PART NO. / DRAWING NO.	STANDARD DIM.	[ ] METRIC DIM. AS REFERENCE
CH CHAN	Jul-21-11	ELECTRICAL SPECIFICATION	S558-5500-72	TOL. IN INCH	UNIT : INCH [mm]
DRAWN BY	DATE		FILE NAME	.X	SCALE : N/A
HY ZHANG	Jul-21-11		S558550072PA.DWG	.XX	REV. : PA
				.XXX	SIZE : A4
					PAGE : 2



THE INFORMATION CONTAINED HEREIN IS CONSIDERED 'PROPRIETARY' TO BEL FUSE INC. AND SHALL NOT BE COPIED, REPRODUCED OR DISCLOSED WITHOUT THE WRITTEN APPROVAL OF BEL FUSE INC.

SUGGESTED PCB PAD LAYOUT



- NOTES:
1. STANDARD MARKING REFER TO DOC. HAND-WORK-04.
  2. PACKAGE CODE: "QVS001".

ORIGINATED BY	DATE	TITLE	PART NO. / DRAWING NO.	STANDARD DIM. TOL. IN INCH	[ ] METRIC DIM. AS REFERENCE
LAWRENCE TSANG	Jul-21-11	MECHANICAL OUTLINE	S558-5500-72	.X	UNIT : INCH [mm]
DRAWN BY	DATE		FILE NAME	.XX ±0.01	SCALE : N/A
HY ZHANG	Jul-21-11		S558550072PA.DWG	.XXX ±0.005	REV. : PA
					SIZE : A4
					PAGE : 3

