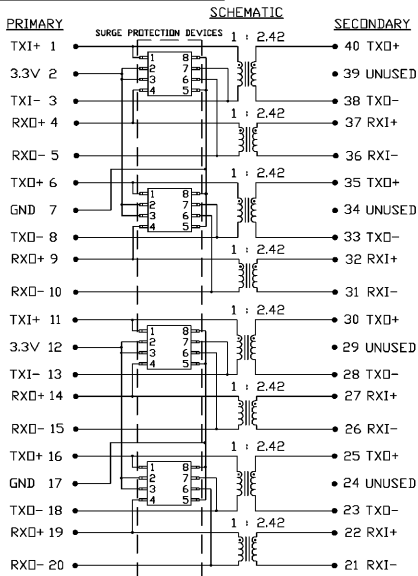


THE INFORMATION CONTAINED HEREIN IS CONSIDERED "PROPRIETARY" TO BEL FUSE INC. AND SHALL NOT BE COPIED, REPRODUCED OR DISCLOSED WITHOUT THE WRITTEN APPROVAL OF BEL FUSE INC.

RoHS  
2002/96/EC



ELECTRICAL CHARACTERISTICS @ 25°C

|                                     |                          |                        |
|-------------------------------------|--------------------------|------------------------|
| TURNS RATIO                         |                          |                        |
| PRIMARY : SECONDARY                 | 1 : 2.42                 |                        |
| INDUCTANCE                          |                          |                        |
| PRIMARY                             | 1.2 mH MIN. @10kHz, 10mV |                        |
| AT -40°C                            | 400 μH MIN.              |                        |
| LEAKAGE INDUCTANCE (Le)             |                          |                        |
| PRIMARY WITH SECONDARY SIDE SHORTED | 0.30 μH MAX. @1MHz, 20mV |                        |
| INTERWINDING CAPACITANCE (Cw/w)     |                          |                        |
| PRIMARY - SECONDARY                 | 35pF MAX. @1MHz, 20mV    |                        |
| DC RESISTANCE                       |                          |                        |
| PRIMARY                             | 0.5Ω MAX.                |                        |
| SECONDARY                           | 1.0 Ω MAX.               |                        |
| HIPDT                               |                          | REF. DOC. HAND-WORK-03 |

THE SURGE PROTECTION DEVICES  
 TVS DIODE ARRAYS : PROTEK PSRDA3.3-4-LF  
 NUMBER OF ARRAYS : 4  
 \*THE SURGE PROTECTION PROVIDED BY THE BEL MODULE IS EQUIVALENT  
 TO THAT ADVERTISED IN THE PROTEK PSRDA3.3-4-LF PRODUCT SPECIFICATION

|               |          |  |
|---------------|----------|--|
| ORIGINATED BY | DATE     | TITLE                                      |
| HILLY CHAN    | 08-24-07 | ELECTRICAL SPECIFICATION<br>S553-6500-A8-F |
| DRAWN BY      | DATE     |  |
| DQ Chen       | 08-24-07 |  |

|                        |                  |
|------------------------|------------------|
| PART NO. / DRAWING NO. | STANDARD DIM.    |
| X5536500A8-F           | TOL. IN INCH     |
| FILE NAME              | UNIT : INCH [mm] |
| X5536500ABF.BWG        | SCALE : N/A      |
|                        | SIZE : A4        |
|                        | PAGE : 2         |

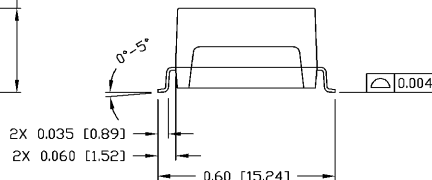
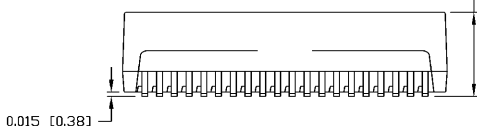
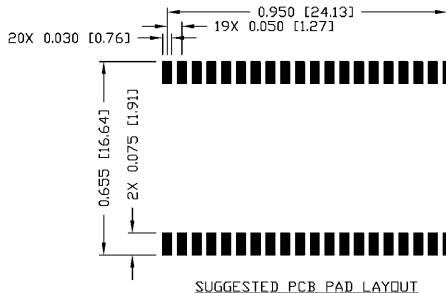
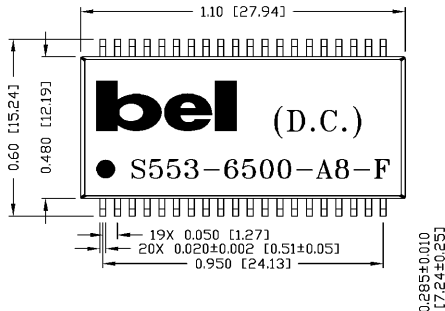
|    |     |      |  |
|----|-----|------|--|
|    |     |      |  |
| .X | .XX | .XXX |  |



THE INFORMATION CONTAINED HEREIN IS CONSIDERED "PROPRIETARY" TO BEL FUSE INC. AND SHALL NOT BE COPIED, REPRODUCED OR DISCLOSED WITHOUT THE WRITTEN APPROVAL OF BEL FUSE INC.

"In order to survive the high temperature (260C) reflow requirement of RoHS directive, the internal solder joints of this part need to use solder containing over 85% of lead. Exempted per RoHS directive Annex 7"

RoHS  
2002/95/EC



NOTES:

- STANDARD MARKING REFER TO DOC. HAND-WORK-04.
- PACKAGE CODE: "DIS002".

| ORIGINATED BY  | DATE     | TITLE                                      | PART NO. / DRAWING NO. | STANDARD DIM. TOL. IN INCH | [ ] METRIC DIM. AS REFERENCE |
|----------------|----------|--|------------------------|----------------------------|------------------------------|
| Lawrence Tsang | 08-24-07 | MECHANICAL SPECIFICATION<br>S553-6500-A8-F | X5536500A8-F           | .X                         | UNIT : INCH [mm]             |
| DQ Chen        | 08-24-07 |  | X5536500ABF.DWG        | .XX ±0.01<br>.XXX ±0.005   | SCALE : N/A                  |
|                |          |  |                        |                            | REV. : B                     |
|                |          |  |                        |                            | SIZE : A4                    |
|                |          |  |                        |                            | PAGE : 3                     |

