

### Hybrid Couplers 3 dB, 90°



#### Applications

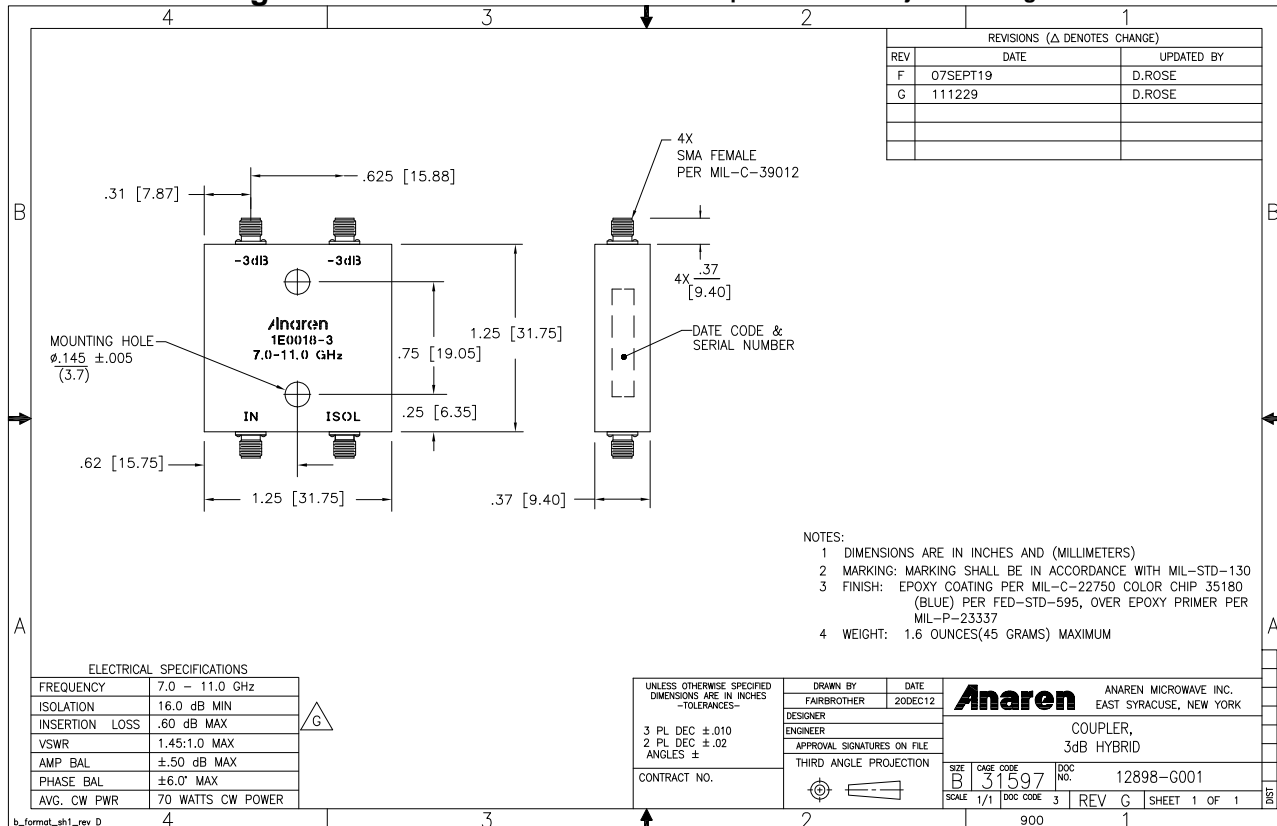
- Balanced Mixers
- Antenna Feed Networks
- Phasing Networks
- Dividers/Combiners

#### Features

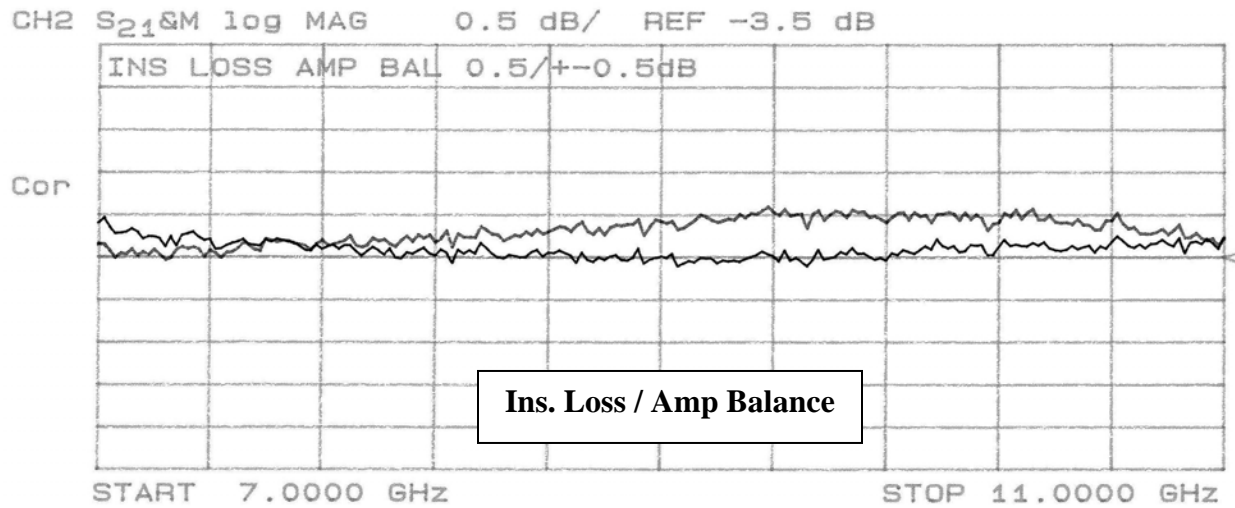
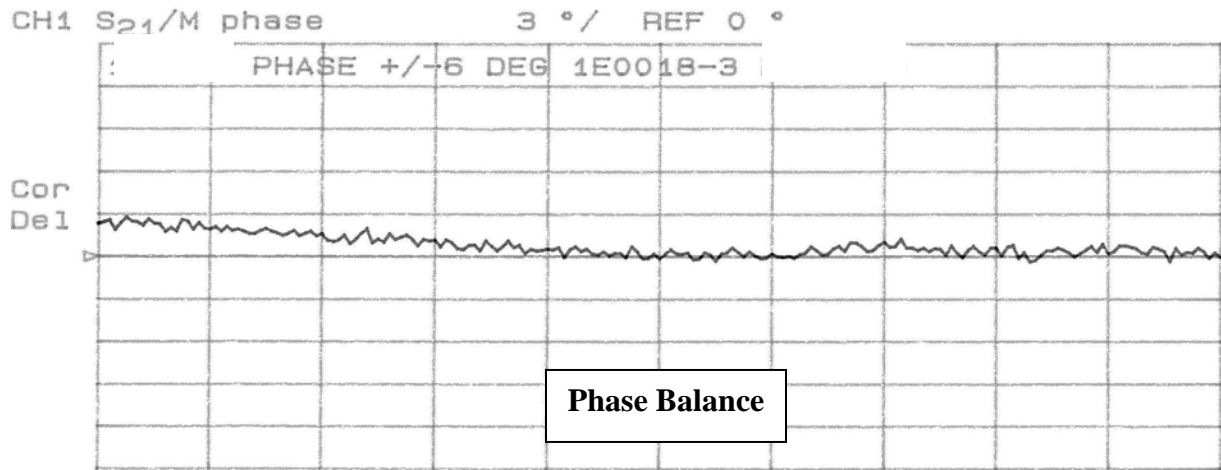
- Military Grade
- 7.0 – 11.0 GHz
- 2-Way power Split
- Quadrature
- Connectors Per MIL-C-39012
- Rugged Aluminum Housing
- Low VSWR
- Meets MIL-E-5400 Class 3 Requirements

#### Outline Drawing

Electrical and Mechanical Specifications subject to change without notice.



**Typical Test Data Plots**



### Typical Test Data Plots

