

### Hybrid Couplers High Power 3 dB, 90°

#### Applications

- Microstrip Circuits
- Power Amps
- Dividers/Combiners
- Switch Networks
- Balanced Detectors
- Antenna Feeds

#### Features

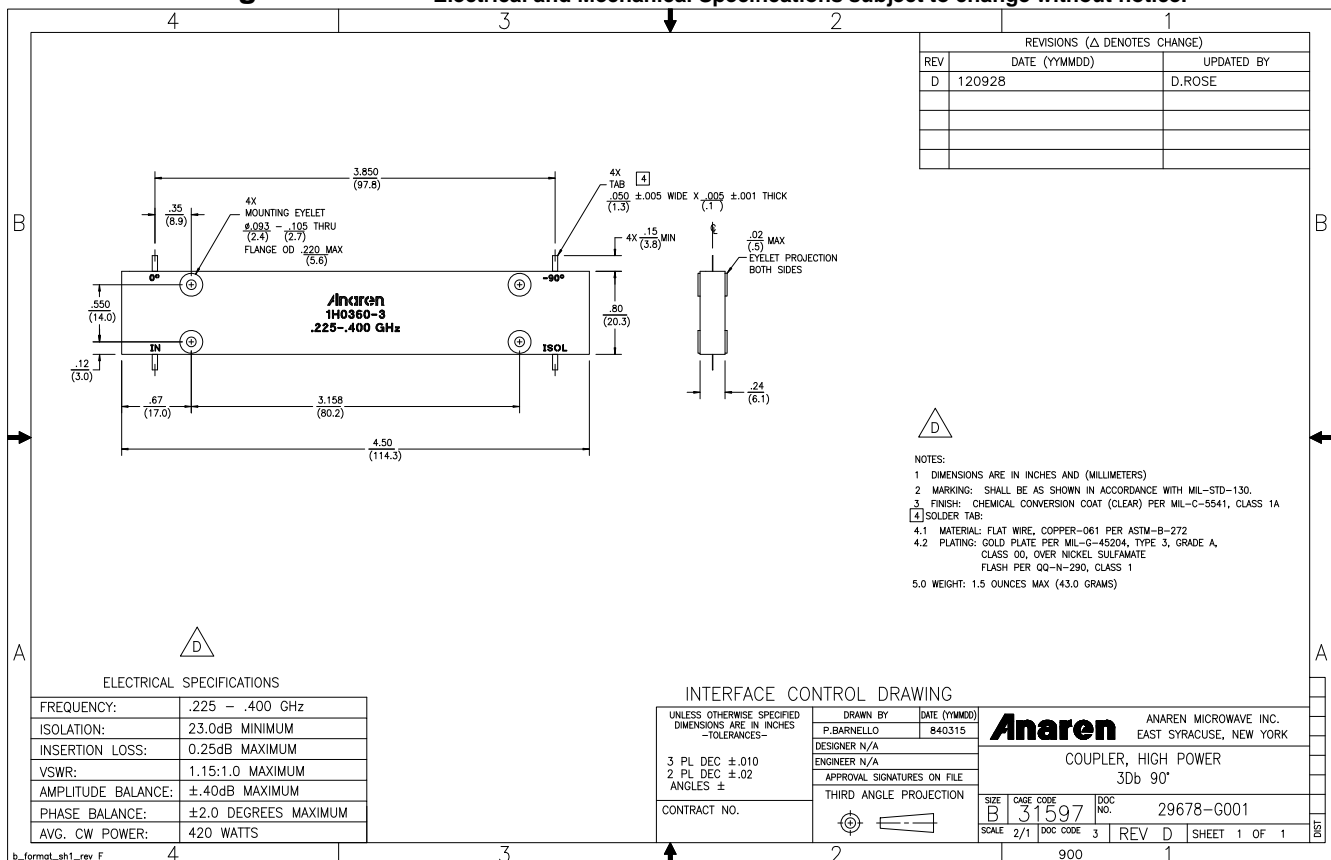
- 0.225 – 0.4 GHz
- 2 – Way power Split
- Welded Tab mount
- Reliable Performance
- Handles 420 Watts
- Meets MIL-E-5400 Class 3 Requirements



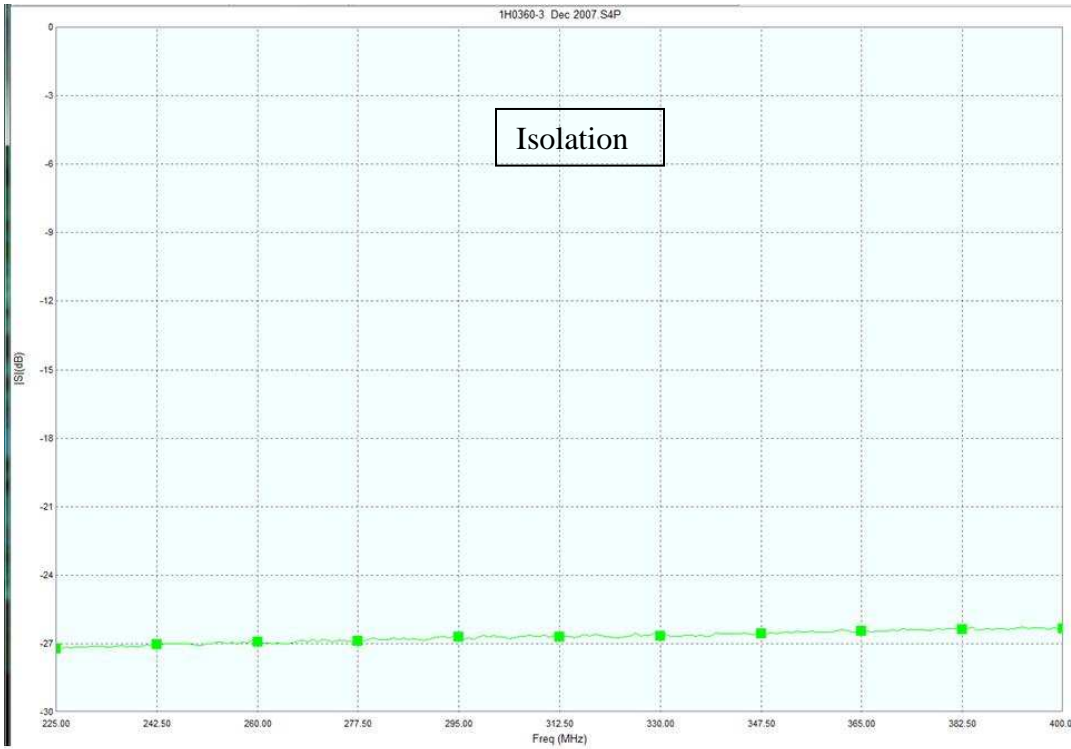
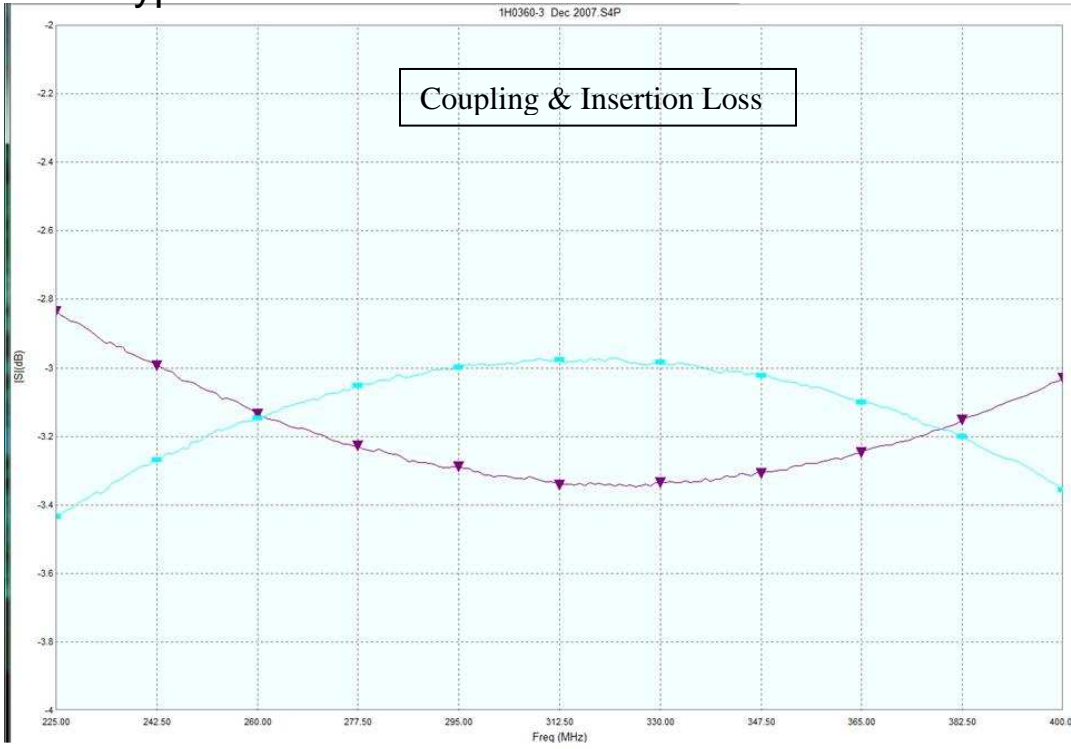
**NOTES:** Anaren Power rating applies when solder tab/coupler interface has been conformally coated.

**Electrical and Mechanical Specifications subject to change without notice.**

#### Outline Drawing



Typical Test Data Plots



USA/Canada: (315) 432-8909  
 Toll Free: (800) 411-6596  
 Europe: +44 2392-232392