

# Customer Information Sheet

DRAWING No.: D6XXX-XX

SHEET 2 OF 2

IF IN DOUBT - ASK

(C)

NOT TO SCALE

THIRD ANGLE PROJECTION

ALL DIMENSIONS IN mm

PART No.	No. OF CONTACTS	No. OF CENTRE BARS	DIM 'A'	DIM 'B'	DIM 'C'	DIM 'D'
D6206-XX	6	0	7.62	5.08	10.16	7.62
D6208-XX	8	0	10.16	7.62	10.16	7.62
D6214-XX	14	0	17.78	15.24	10.16	7.62
D6216-XX	16	0	20.32	17.78	10.16	7.62
D6218-XX	18	0	22.86	20.32	10.16	7.62
D6220-XX	20	1	25.40	22.86	10.16	7.62
D6222-XX	22	1	27.94	25.40	12.70	10.16
D6224-XX	24	1	30.48	27.94	17.78	15.24
D6228-XX	28	1	35.62	33.02	17.78	15.24
D6232-XX	32	1	40.64	38.10	17.78	15.24
D6240-XX	40	2	50.80	48.26	17.78	15.24
D6248-XX	48	2	60.96	58.42	25.28	22.86
D6264-XX	64	2	81.28	78.74	25.28	22.86
D6724-XX	24	1	30.48	27.94	12.70	10.16
D6922-XX	22	1	27.94	25.40	10.16	7.62
D6924-XX	24	0	30.48	27.94	10.16	7.62
D6948-XX	48	2	60.96	58.42	17.78	15.24

**SPECIFICATION:**

**MATERIAL:**  
**MOULDING:**  
 01 FINISH = GLASS-FILLED POLYESTER UL94V-0, BLACK  
 46 FINISH = HIGH TEMP. POLYAMIDE 46, UL94V-0, BLACK  
**CONTACTS = BRASS**  
**FINISH:**  
 CONTACTS = 3.5-5.0µ 100% TIN OVER 2µ NICKEL  
**ELECTRICAL:**  
 CURRENT RATING AT 25°C = 1.5A  
 CURRENT RATING AT 85°C = 0.25A  
 CONTACT RESISTANCE (INITIAL) = 15 mΩ MAX  
 CONTACT RESISTANCE (AFTER CONDITIONING) = 23 mΩ MAX  
 INSULATION RESISTANCE (INITIAL) = 1,000 MΩ MIN  
 INSULATION RESISTANCE (AFTER CONDITIONING) = 100 MΩ MIN  
**ENVIRONMENTAL:**  
 TEMPERATURE RANGE = -55°C TO +125°C  
**PACKING:**  
 TUBE  
 FOR COMPLETE SPECIFICATION, SEE COMPONENT SPECIFICATION C004XX (LATEST ISSUE)

**NOTES:**

1. RECOMMENDED PCB HOLE SIZE = Ø0.80mm MIN.

ORDER CODE:

**D6XXX-XX**

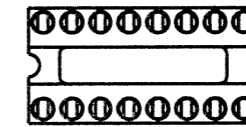
PITCH CODE  
SEE TABLE

TOTAL No. OF CONTACTS

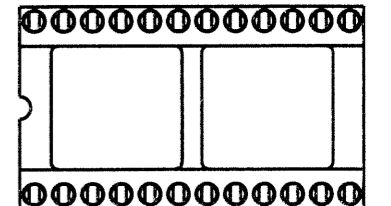
FINISH:

01 = 100% TIN  
 46 = 100% TIN (HIGH TEMP MOULD)

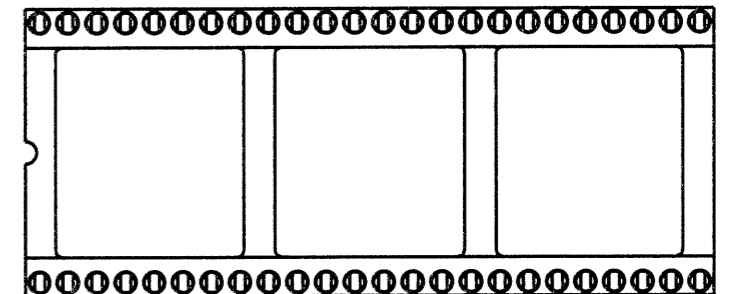
ILLUSTRATION OF NUMBER OF CENTRE BARS (SEE TABLE)



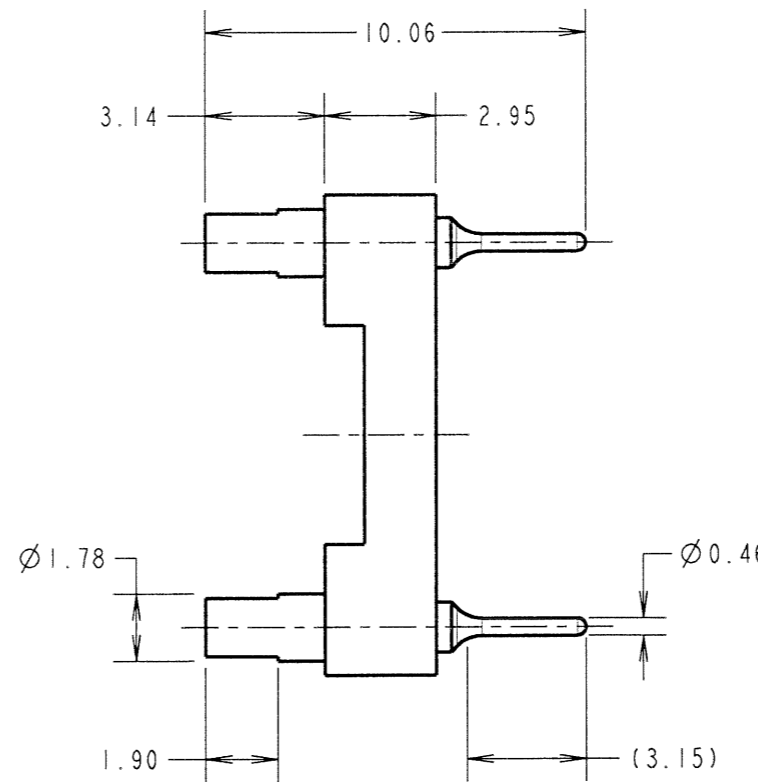
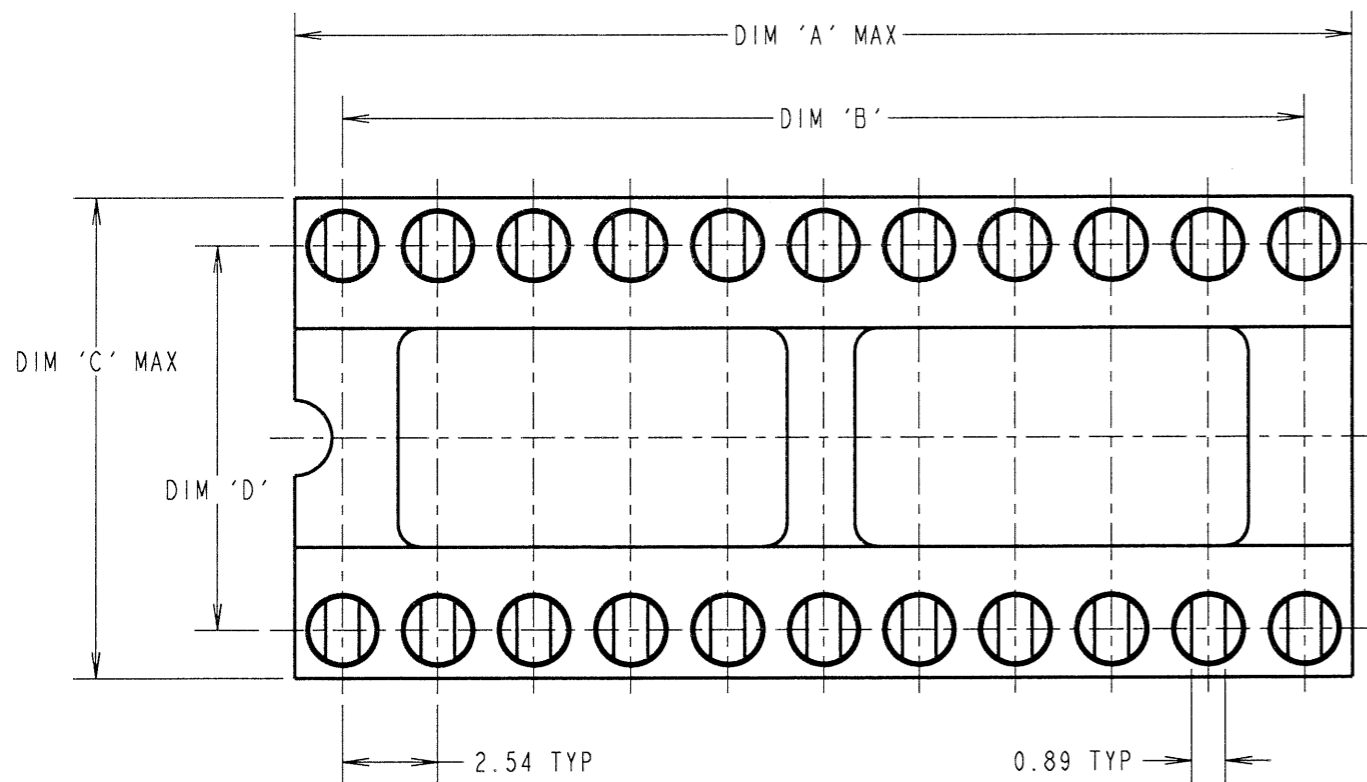
0 BARS



1 BAR



2 BARS



JMB	9	07.12.05	8905
NAME	ISS.	DATE	C/NOTE
APPROVED: <i>[Signature]</i>			
CHECKED: <i>[Signature]</i>			
DRAWN: D. FAIRS			
CUSTOMER REF.:			
ASSEMBLY DRG:			

<b>HARWIN</b>			THIS DRAWING AND ANY INFORMATION OR DESCRIPTIVE MATTER SET OUT HEREON ARE CONFIDENTIAL AND COPYRIGHT PROPERTY OF THE HARWIN GROUP AND MUST NOT BE DISCLOSED, LOANED, COPIED OR USED FOR MANUFACTURING, TENDERING OR FOR ANY OTHER PURPOSE WITHOUT THEIR WRITTEN PERMISSION.	TOLERANCES X. = ±1mm X.X = ±0.25mm X.XX = ±0.10mm X.XXX = ±0.01mm ANGLES = ±5° UNLESS STATED	MATERIAL: SEE ABOVE	FINISH: SEE ABOVE S/AREA: mm <sup>2</sup>	TITLE: DIL I.C. SLOTTED HEADER ASSEMBLY	DRAWING NUMBER: <b>D6XXX-XX</b>	SHT 2 OF 2
HARWIN INC U.S.A. TEL: (812) 542 2540 FAX: (812) 542 2541	HARWIN PLC U.K. TEL: 023 9231 4545 FAX: 023 9231 4590	HARWIN PTE SINGAPORE TEL: 65 6779 4909 FAX: 65 6779 3868							