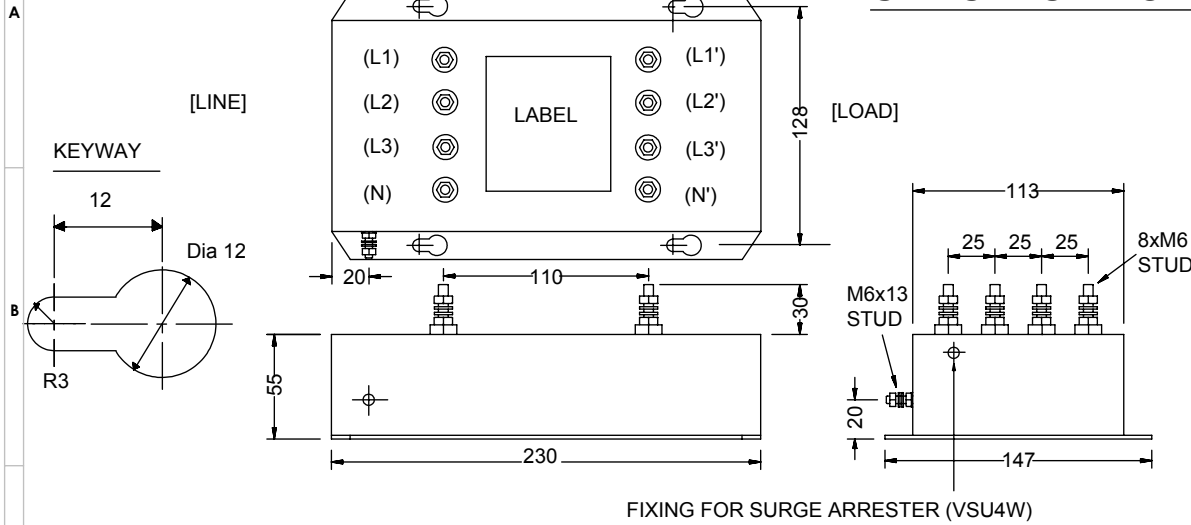


MECHANICAL SPECIFICATION



ELECTRICAL SPECIFICATION

RATED VOLTAGE 480/277V
LINE FREQUENCY 50/60Hz
TEMPERATURE RANGE -25 to 85 DegC
TEST VOLTAGE 2.0KV DC
LEAKAGE CURRENT 2.2mA AT 250V 50Hz
WEIGHT 2.7Kg

PRODUCT RANGE

TYPE	CURRENT I(RMS) @40°C	INDUCTANCE (L)	RESISTANCE (R) PER WINDING	MINIMUM INSERTION LOSS AT 150 KHZ	
				COMMON MODE	DIFFERENTIAL MODE
IHF418	18A	1.60 mH	7.40 mR	42dB	30dB
IHF425	25A	1.10 mH	4.00 mR	39dB	27dB
IHF436	36A	0.55 mH	1.65 mR	33dB	21dB
IHF450	50A	0.28 mH	1.00 mR	27dB	15dB

RoHS
2002/95/EC

Compliant