

801-059

Series 801 Mighty Mouse Hermetic Receptacle
 Quick Coupling • Co-Ax Pins
 How to Order Information



Series 80
Mighty Mouse



Series 801 Hermetic Receptacles feature 304L stainless steel shells, fused vitreous glass insulators and Alloy 52 iron alloy contacts.

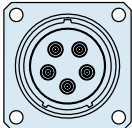
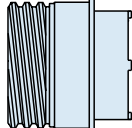
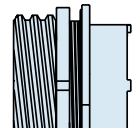
1 X 10⁻⁷ cc/second maximum helium leak rate.

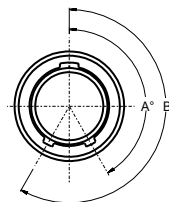
Three Shell Styles: solder mount, jam nut or square flange.

Cable Adapters with Crimp Rings provided with each connector for reliable cable termination.

C

Series 801 Solder Mount Hermetic

HOW TO ORDER						
Sample Part Number						
801-059	-03	Z1	16-5	P	A	-02
Series	Shell Style	Shell Material / Finish	Shell Size/Insert Arrangement	Contact Type	Shell Key Position	Cable Attachment
801-059 Hermetic Receptacle, Quick Coupling, Co-Ax Pins	 -02 Square Flange	Z1 Stainless Steel / Passivated	See Page C-4 for Contact Arrangements	P Co-Ax Pin	A Normal B Pos. B C Pos. C D Pos. D E Pos. E F Pos. F	Cables Accommodated: -01 M17/113-RG316 -02 M17/152-00001 (RG316DS) -03 M17/93-RG178 -04 RG-178 Double Shield per DSCC 06017 -05 M17/94-RG179
	 -03 Solder Mount	ZB Stainless Steel / Olive Drab Chromate over Cadmium				
	 -07 Jam Nut Rear Mount Only	ZC Stainless Steel / Zinc Cobalt Alloy/Black Chromate				
		ZL Stainless Steel / Nickel Plated *Titanium and Incone ^l ® shell materials are available. Consult factory for ordering information.				



	A°	B°
A	150°	210°
B	75°	210°
C	95°	230°
D	140°	275°
E	75°	275°
F	95°	210°

Note: Each connector is supplied with sufficient cable adapters and crimp rings to terminate appropriate cable for insertion into contact rear. After cable is terminated and adapter inserted into contact rear, the rear of the connector must be potted to cover adapters.

Dimensions in Inches (millimeters) are subject to change without notice.

© 2013 Glenair, Inc.

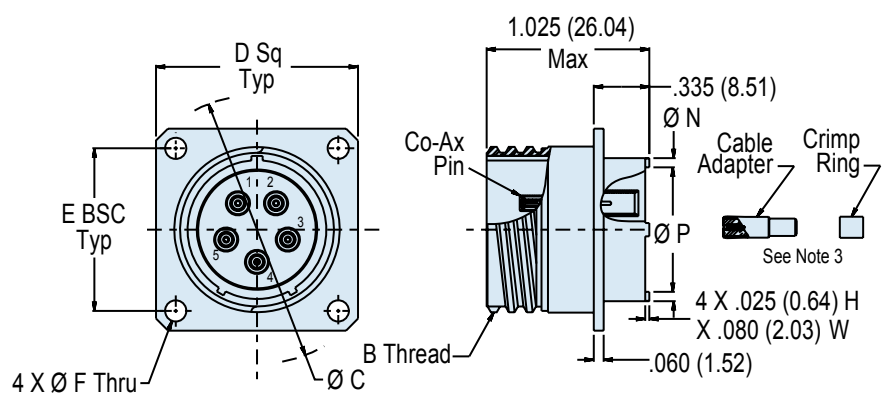
U.S. CAGE Code 06324

Printed in U.S.A.



801-059-02
Series 801 Mighty Mouse Hermetic Receptacle
 Quick Coupling • Square Flange • Co-Ax Pins
Connector Dimensions

C



Square Flange Panel Mount Hermetic
 801-059-02

DIMENSIONS									
Shell Size	B Thread	Ø C		D Sq		Ø N		Ø P	
		In.	mm.	In.	mm.	In.	mm.	In.	mm.
6	.3750-.05P-.1L-2A	.750	19.05	.590	14.99	.330	8.38	.236	6.20
7	.4375-.05P-.1L-2A	.850	21.59	.650	16.51	.432	10.97	.324	8.38
8	.5000-.05P-.1L-2A	.938	23.83	.712	18.08	.493	12.52	.390	10.97
9	.5625-.05P-.1L-2A	1.125	28.56	.850	21.59	.551	14.00	.444	12.52
10	.6250-.05P-.1L-2A	1.188	30.18	.890	22.61	.620	15.75	.520	14.00
11	.6875-.05P-.1L-2A	1.250	31.75	.935	23.75	.662	16.81	.557	15.75
13	.8125-.1P-.2L-2A	1.375	34.93	1.030	26.16	.703	17.86	.596	17.86
16	1.0000-.1P-.2L-2A	1.625	41.28	1.219	30.96	.863	21.92	.756	21.92
17	1.0625-.1P-.2L-2A	1.700	43.18	1.280	32.51	.912	23.16	.805	23.16
19	1.8750-.1P-.2L-2A	1.900	48.26	1.432	36.37	1.018	25.86	.910	29.72
21	1.3125-.1P-.2L-2A	2.100	53.34	1.565	39.75	1.170	29.72	1.061	26.95

SERIES 801 PANEL CUTOUT						
Shell Size	Ø A		E BSC		Ø F	
	In.	mm.	In.	mm.	In.	mm.
6	.455	11.56	.423	9.22	.096 .091	2.44 2.31
7	.520	13.21	.483	12.27		
8	.580	14.73	.545	13.84		
9	.645	16.38	.607	15.42	.130 .126	3.30 3.20
10	.705	17.91	.670	17.02		
11	.770	19.56	.715	18.16		
13	.895	22.73	.812	20.62		
16	1.080	27.43	.981	24.92		
17	1.145	29.08	1.060	26.92		
19	1.283	32.59	1.191	30.25		
21	1.415	35.94	1.322	33.58		

KEY POSITIONS		
	A°	B°
A	150°	210°
B	75°	210°
C	95°	230°
D	140°	275°
E	75°	275°
F	95°	210°

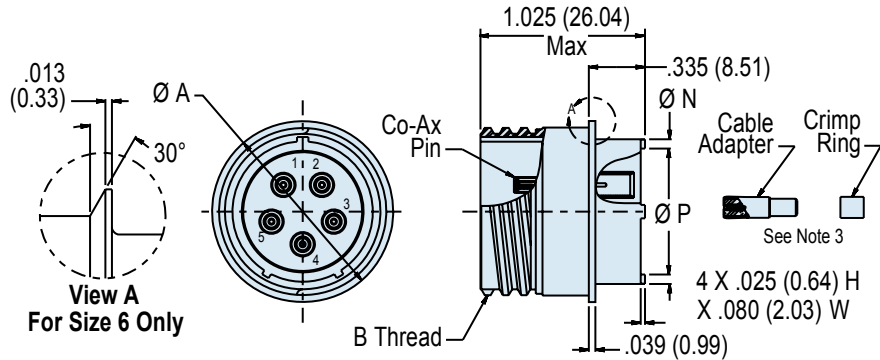
Dimensions in Inches (millimeters) are subject to change without notice.

801-059-03

Series 801 Mighty Mouse Hermetic Receptacle
 Quick Coupling • Solder Mount • Co-Ax Pins
 Connector Dimensions



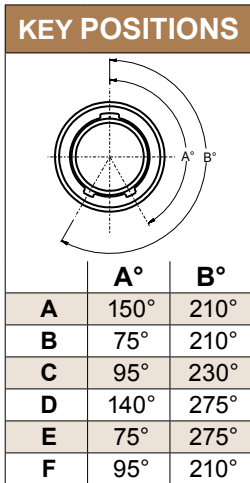
Series 80
Mighty Mouse



Solder Mount Hermetic
 801-059-03

C

DIMENSIONS							
Shell Size	Ø A		B Thread	Ø N		Ø M Panel Cutout	
	In.	mm.		In.	mm.	In.	mm.
6	.455	11.56	.3750-.05P-.1L-2A	.330	8.38	.448	11.38
7	.520	13.21	.4375-.05P-.1L-2A	.432	10.97	.573	14.55
8	.580	14.73	.5000-.05P-.1L-2A	.493	12.52	.573	14.55
9	.645	16.38	.5625-.05P-.1L-2A	.551	14.00	.635	16.13
10	.705	17.91	.6250-.05P-.1L-2A	.620	15.75	.698	17.73
11	.770	19.56	.6875-.05P-.1L-2A	.662	16.81	.760	19.30
13	.895	22.73	.8125-.1P-.2L-2A	.703	17.86	.885	22.48
16	1.080	29.08	1.0000-.1P-.2L-2A	.863	21.92	1.075	27.31
17	1.145	29.08	1.0625-.1P-.2L-2A	.912	23.16	1.135	28.83
19	1.283	32.59	1.8750-.1P-.2L-2A	1.018	25.86	1.260	32.00
21	1.415	35.94	1.3125-.1P-.2L-2A	1.170	29.72	1.385	68.83



Dimensions in Inches (millimeters) are subject to change without notice.

Series 80
Mighty Mouse

801-059-07

Series 801 Mighty Mouse Hermetic Receptacle
Quick Coupling, Jam Nut Mount with Co-Ax Pins

Technical drawing showing front and side views of the Jam Nut Mount Hermetic receptacle. Dimensions include: $\varnothing G$, J Flat, H Flat 2 PI, 1.025 (26.04) Max, .100 (2.54) Max Panel, .335 (8.51), $\varnothing N$, Cable Adapter, Crimp Ring (See Note 3), $\varnothing P$, 4 X .025 (0.64) H, X .080 (2.03) W, .060 (1.52), and B Thread.

Jam Nut Mount Hermetic
801-059-07

DIMENSIONS

Shell Size	$\varnothing A$		J Flat		H Flat		B Thread	K Thread	$\varnothing N$	
	In.	mm.	In.	mm.	In.	mm.			In.	mm.
6	.455	11.56	.410	10.41	.595	15.11	.3750-.05P-.1L-2A	.4375-28 UNEF-2A	.330	8.38
7	.520	13.21	.536	13.61	.723	18.36	.4375-.05P-.1L-2A	.5625-32 UN-2A	.432	10.97
8	.580	14.73	.536	13.61	.723	18.36	.5000-.05P-.1L-2A	.5625-32 UN-2A	.493	12.52
9	.645	16.38	.596	15.14	.790	20.07	.5625-.05P-.1L-2A	.6250-28 UN-2A	.551	14.00
10	.705	17.91	.658	16.71	.855	21.72	.6250-.05P-.1L-2A	.6875-28 UN-2A	.620	15.75
11	.770	19.56	.718	18.24	.925	23.50	.6875-.05P-.1L-2A	.7500-28 UN-2A	.662	16.81
13	.895	22.73	.845	21.46	1.044	26.52	.8125-.1P-.2L-2A	.8750-28 UN-2A	.703	17.86
16	1.080	27.43	1.022	25.96	1.230	31.24	1.0000-.1P-.2L-2A	1.0625-20 UN-2A	.863	21.92
17	1.145	29.08	1.096	27.84	1.290	32.77	1.0625-.1P-.2L-2A	1.1250-28 UN-2A	.912	23.16
19	1.283	32.59	1.225	31.12	1.415	35.94	1.8750-.1P-.2L-2A	1.2500-28 UN-2A	1.018	25.86
21	1.415	35.94	1.346	34.19	1.577	40.06	1.3125-.1P-.2L-2A	1.3750-28 UN-2A	1.170	29.72

KEY POSITIONS

	A°	B°
A	150°	210°
B	75°	210°
C	95°	230°
D	140°	275°
E	75°	275°
F	95°	210°

SERIES 801 JAM NUT PANEL CUTOUT

Shell Size	L Flat		$\varnothing M$	
	In. ± .002	mm. ± 0.05	In.	mm.
6	.418/.414	10.62/10.52	.448	11.38
7	.544/.540	13.82/13.72	.573	14.55
8	.544/.540	13.82/13.72	.573	14.55
9	.604/.600	15.34/15.24	.635	16.13
10	.668/.664	16.97/16.87	.698	17.73
11	.728/.724	18.49/18.39	.760	19.30
13	.853/.849	21.67/21.56	.885	22.48
16	1.030/1.026	26.16/26.06	1.075	27.31
17	1.104/1.100	28.04/27.94	1.135	28.83
19	1.235/1.231	31.37/31.27	1.260	32.00
21	1.353/1.349	34.37/34.26	1.385	68.83

Recommended Panel Cutout Shell Style -07

Dimensions in Inches (millimeters) are subject to change without notice.

© 2013 Glenair, Inc.

U.S. CAGE Code 06324

Printed in U.S.A.

GLENAIR, INC. • 1211 AIR WAY • GLENDALE, CA 91201-2497 • 818-247-6000 • FAX 818-500-9912
www.glenair.com C-42 E-Mail: sales@glenair.com