



802-040
Series 802 "Aqua Mouse" Submersible
Hermetic Receptacle How to Order Information
Sizes 12 and 16 Only

C



802-040-00 Front Mount

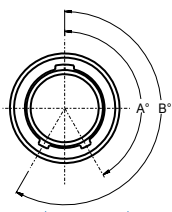
Series 801 Hermetic Receptacles feature 304L stainless steel shells, fused vitreous glass insulators and Alloy 52 iron alloy contacts.

1 X 10⁻⁷ cc/second maximum helium leak rate.

Four Shell Styles: front mount jam nut, front panel square flange mount, weld mount and rear panel jam nut mount.

Cable Adapters with Crimp Rings provided with each connector for reliable cable termination.

HOW TO ORDER

Sample Part Number																								
802-040	-07	Z1	12-3	P	A	-210																		
Series	Shell Style	Shell Material / Finish	Shell Size/Insert Arrangement	Contact Type	Shell Key Position	Cable Style																		
802-040 Hermetic Receptacle, Co-Ax Contacts, Sizes 12 and 16 Only	-00 Front Mount Jam Nut	Z1 Stainless Steel / Passivated	See Page C-4 for Contact Arrangements	P Co-Ax Pin	A Normal	Specify BIN Code per AS39029/27, /28, /76 and /78 Note: Each connector is supplied with sufficient cable adapters and crimp rings to terminate appropriate cable for insertion into contact rear. After cable is terminated and adapter inserted into contact rear, the rear of the connector must be potted to cover adapters.																		
	-02 Front Panel Square Flange Mount	ZL Stainless Steel / Nickel Plated		S Co-Ax Socket	B Pos. B C Pos. C D Pos. D E Pos. E F Pos. F																			
	-03 Weld Mount	Titanium and Inconel® shell materials are available. Consult factory for ordering information.																						
	-07 Rear Panel Jam Nut Mount			<table border="1"> <thead> <tr> <th></th> <th style="text-align: center;">A°</th> <th style="text-align: center;">B°</th> </tr> </thead> <tbody> <tr> <td style="text-align: center;">A</td> <td style="text-align: center;">150°</td> <td style="text-align: center;">210°</td> </tr> <tr> <td style="text-align: center;">B</td> <td style="text-align: center;">75°</td> <td style="text-align: center;">210°</td> </tr> <tr> <td style="text-align: center;">C</td> <td style="text-align: center;">95°</td> <td style="text-align: center;">230°</td> </tr> <tr> <td style="text-align: center;">D</td> <td style="text-align: center;">140°</td> <td style="text-align: center;">275°</td> </tr> <tr> <td style="text-align: center;">E</td> <td style="text-align: center;">75°</td> <td style="text-align: center;">275°</td> </tr> <tr> <td style="text-align: center;">F</td> <td style="text-align: center;">95°</td> <td style="text-align: center;">210°</td> </tr> </tbody> </table>				A°	B°	A	150°	210°	B	75°	210°	C	95°	230°	D	140°	275°	E	75°	275°
	A°	B°																						
A	150°	210°																						
B	75°	210°																						
C	95°	230°																						
D	140°	275°																						
E	75°	275°																						
F	95°	210°																						

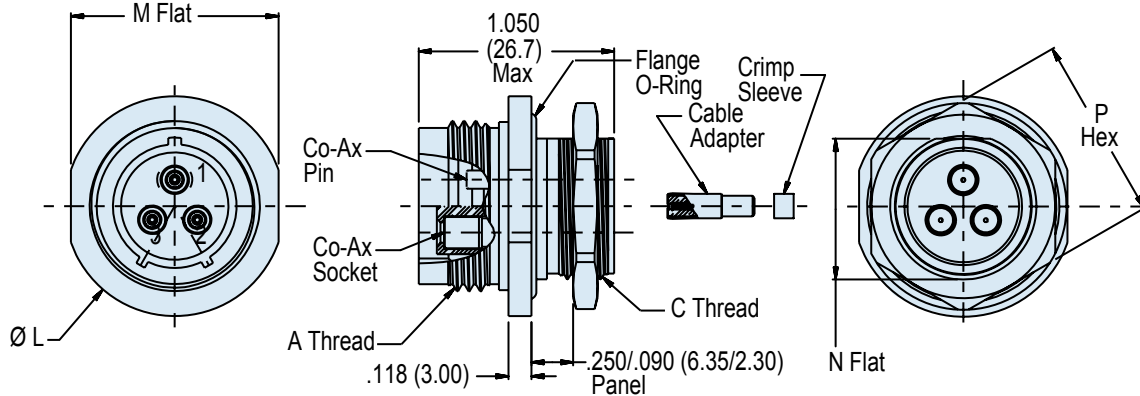
Dimensions in Inches (millimeters) are subject to change without notice.

802-040-00

Series 802 "Aqua Mouse" Submersible
Co-Ax Contacts • Sizes 12 and 16 Only
Front Panel Jam Nut Mount Hermetic Receptacle



Series 80
Mighty Mouse



Front Panel Jam Nut Mount Submersible Hermetic
802-040-00

DIMENSIONS

Shell Size	A Max.		B Flat		C Mating Threads	D Threads	Ø E Tail Dia.	F Flat		G Hex	
	In.	mm.	In.	mm.				In.	mm.	In.	mm.
5	.720	18.29	.625	15.88	.438-28 UNEF-2A	.312-28 UN-2A	#23 .018/.022 (0.46/0.56)	.281	7.14	.500	12.70
6	.780	19.81	.750	19.05	.562-20 UN-2A	.438-28 UN-2A		.344	8.74	.625	15.88
7	.910	23.11	.812	20.62	.625-20 UN-2A	.500-32 UN-2A		.469	11.91	.688	17.48
8	.960	24.38	.875	22.23	.687-20 UN-2A	.562-28 UN-2A	#20 .024/.028 (0.61/0.71)	.531	13.49	.750	19.05
9	1.030	26.16	.937	23.80	.750-20 UNEF-2A	.625-20 UN-2A		.594	15.09	.812	20.62
10	1.090	27.69	1.000	25.40	.812-20 UNEF-2A	.687-28 UN-2A		.656	16.66	.875	22.23
12	1.160	29.46	1.062	26.97	.875-20 UNEF-2A	.750-28 UN-2A	#16 .060/.064 (1.52/1.63)	.719	18.26	.938	23.83
14	1.340	34.04	1.250	31.75	1.062-20 UN-2A	.938-28 UN-2A		.893	22.68	1.125	28.58
15	1.410	35.18	1.312	33.32	1.125-20 UN-2A	1.000-28 UN-2A		.955	24.26	1.188	30.18
21	1.700	43.18	1.562	39.67	1.4375-20 UN-2A	1.312-28 UN-2A	#12 .092/.096 (2.34/2.44)	1.257	31.93	1.500	38.10

SERIES 802 RECEPTACLE KEY POSITIONS

Key Position	Key Rotation	
	A°	B°
Normal (A)	150°	210°
B	75°	210°
C	95°	230°
D	140°	275°

CUTOUT DIMENSIONS

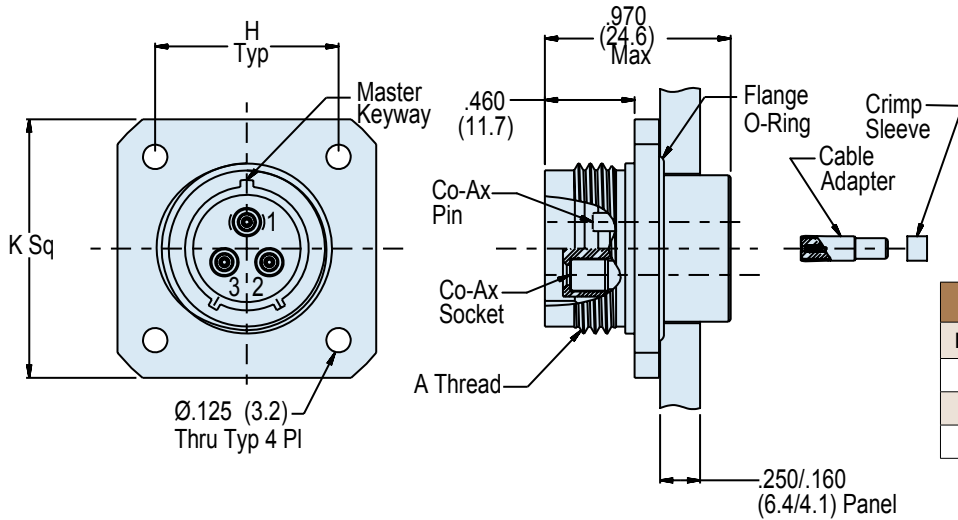
Shell Size	H Flat		Ø J	
	In.	mm.	In.	mm.
5	.291/.286	7.4/7.3	.322	8.2
6	.417/.412	10.6/10.5	.448	11.4
7	.479/.474	12.2/12.0	.510	13.0
8	.541/.536	13.7/13.6	.572	14.5
9	.604/.599	15.3/15.2	.635	16.1
10	.666/.661	16.9/16.8	.697	17.7
12	.729/.724	18.5/18.4	.760	19.3
14	.903/.898	22.9/22.8	.948	24.1
15	.965/.960	24.5/24.4	1.010	25.7
21	1.267/1.263	32.2/32.1	1.322	33.6

RECOMMENDED PANEL CUTOUT FOR STYLE 00 FRONT MOUNT JAM NUT

Dimensions in Inches (millimeters) are subject to change without notice.



802-040-02
Series 802 "Aqua Mouse" Submersible
Coax Contacts • Sizes 12 and 16 Only
Front Panel Square Flange Mount Hermetic Receptacle

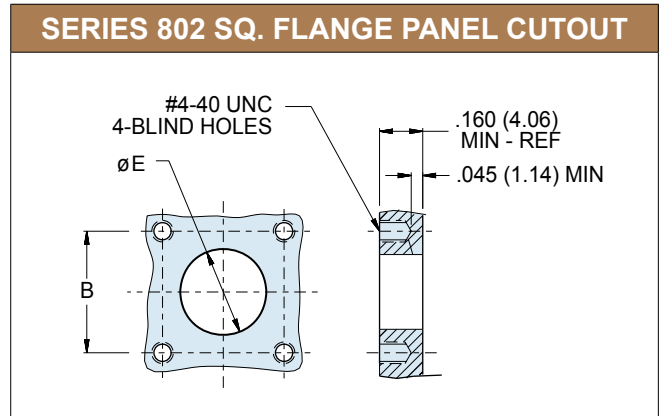


HERMETIC LEAK RATE MOD CODES	
Designator	Required Leak Rate
-585A	1 x 10 ⁻¹⁰ cc Helium per second
-585B	1 x 10 ⁻⁹ cc Helium per second
-585C	1 x 10 ⁻⁸ cc Helium per second

Front Panel Square Flange Mount Submersible Hermetic
802-040-02

DIMENSIONS								
Shell Size	A Square		B Bsc.		C Mating Threads	Ø D Tail Dia.	Ø E	
	In.	mm.	In.	mm.			In.	mm.
5	.885	22.48	.500	12.70	.438-28 UNEF	#23 .018/.022 (0.46/0.56)	.327	8.31
6	1.010	25.65	.625	15.88	.562-20 UN		.390	9.91
7	1.072	27.23	.688	17.48	.625-20 UN		.515	13.08
8	1.135	28.83	.750	19.05	.687-20 UN	#20 .024/.028 (0.61/0.71)	.577	14.66
9	1.195	30.35	.812	20.62	.750-20 UNEF		.640	16.26
10	1.260	32.00	.875	22.23	.812-20 UNEF	#16 .060/.064 (1.52/1.63)	.702	17.83
12	1.323	33.60	.938	23.83	.875-20 UNEF		.765	19.43
14	1.510	38.25	1.125	28.58	1.062-20 UN	#12 .092/.096 (2.34/2.44)	.953	24.21
15	1.573	39.95	1.188	30.18	1.125-20 UN		1.015	25.78
21	1.750	44.45	1.375	34.93	1.4375-20 UN		1.312	33.32

SERIES 802 RECEPTACLE KEY POSITIONS			
Key Position	Key Rotation		Diagram
	A°	B°	
Normal (A)	150°	210°	
B	75°	210°	
C	95°	230°	
D	140°	275°	



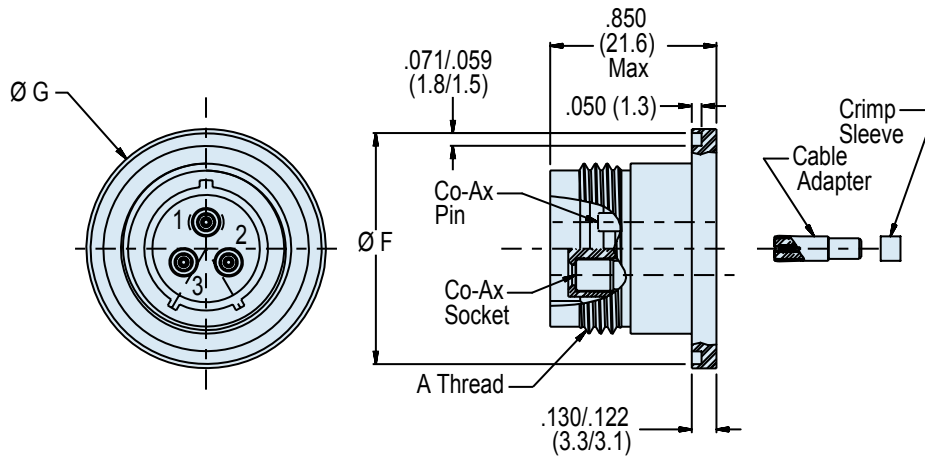
Dimensions in Inches (millimeters) are subject to change without notice.

802-040-03

Series 802 "Aqua Mouse" Submersible
Coax Contacts • Sizes 12 and 16 Only
Weld Mount Hermetic Receptacle



Series 80
Mighty Mouse



Weld Mount Submersible Hermetic
802-040-03

DIMENSIONS						
Shell Size	$\varnothing A$		$\varnothing B$		C Mating Threads	$\varnothing E$ Tail Dia.
	In. $\pm .006$	mm. ± 0.15	In. $\pm .006$	mm. ± 0.15		
5	.788	20.02	.745	18.92	.438-28 UNEF	#23 .018/.022 (0.46/0.56)
6	.912	23.16	.869	22.07	.562-20 UN	
7	.975	24.77	.933	23.70	.625-20 UN	
8	1.038	26.37	.995	25.27	.687-20 UN	#20 .024/.028 (0.61/0.71)
9	1.100	27.94	1.057	26.85	.750-20 UNEF	
10	1.162	29.53	1.119	28.42	.812-20 UNEF	#16 .060/.064 (1.52/1.63)
12	1.225	31.12	1.182	30.02	.875-20 UNEF	
14	1.412	35.86	1.369	34.77	1.062-20 UN	#12 .092/.096 (2.34/2.44)
15	1.475	37.47	1.432	36.37	1.125-20 UN	
21	1.795	45.59	1.747	44.38	1.4375-20 UN	

SERIES 802 RECEPTACLE KEY POSITIONS		
Key Position	Key Rotation	
	A°	B°
Normal (A)	150°	210°
B	75°	210°
C	95°	230°
D	140°	275°

Diagram showing the key positions A, B, C, and D on the receptacle, with corresponding rotation angles A° and B°.

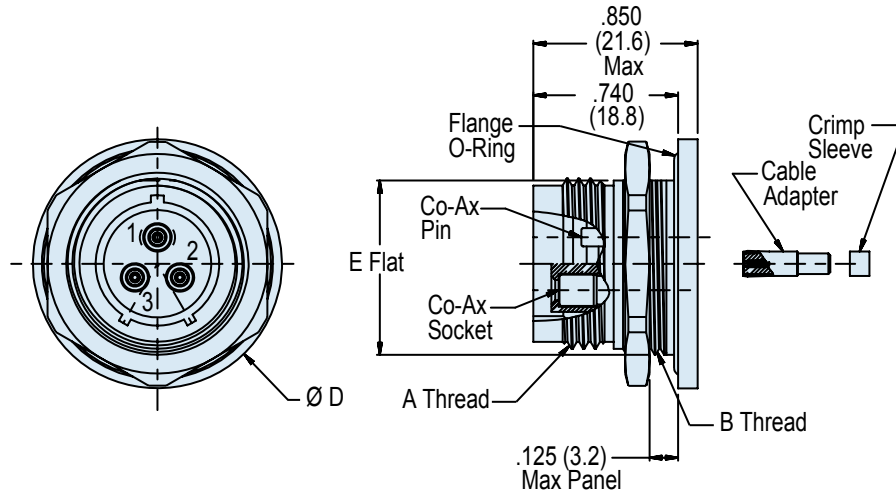
Dimensions in Inches (millimeters) are subject to change without notice.

C



802-040-07

Series 802 "Aqua Mouse" Submersible
Coax Contacts • Sizes 12 and 16 Only
Rear Panel Jam Nut Mount Hermetic Receptacle



Rear Panel Jam Nut Mount Submersible Hermetic
802-040-07

DIMENSIONS

Shell Size	A Max.		B Flat		C Mating Threads	D Threads	Ø E Tail Dia.	F Flat		Ø G	
			In. ±.003	mm. ±0.08				In. ±.003	mm. ±0.08		
5	.885	22.48	.466	11.84	.438-28 UNEF	.500-32 UN-2A	#23 .018/.022 (0.46/0.56)	.473	12.01	.510	12.95
6	1.010	25.65	.591	15.01	.562-20 UN	.625-20 UN-2A		.603	15.32	.635	16.13
7	1.072	27.23	.653	16.59	.625-20 UN	.687-28 UN-2A		.662	16.81	.697	17.70
8	1.135	28.83	.716	18.19	.687-20 UN	.750-28 UN-2A	#20 .024/.028 (0.61/0.71)	.714	18.14	.760	19.30
9	1.195	30.35	.778	19.76	.750-20 UNEF	.812-28 UN-2A		.785	19.94	.822	20.88
10	1.260	32.00	.827	21.01	.812-20 UNEF	.875-28 UN-2A	#16 .060/.064 (1.52/1.63)	.835	21.21	.885	22.48
12	1.322	33.58	.890	22.61	.875-20 UNEF	.938-28 UN-2A		.899	22.83	.948	24.08
14	1.510	38.25	1.077	27.36	1.062-20 UN	1.125-28 UN-2A	#12 .092/.096 (2.34/2.44)	1.085	27.56	1.135	28.83
15	1.572	39.93	1.140	28.96	1.125-20 UN	1.188-28 UN-2A		1.155	29.34	1.198	30.43
21	1.940	49.28	1.464	37.19	1.4375-20 UN	1.500-28 UN-2A		1.473	37.41	1.510	39.12

SERIES 802 RECEPTACLE KEY POSITIONS

Key Position	Key Rotation	
	A°	B°
Normal (A)	150°	210°
B	75°	210°
C	95°	230°
D	140°	275°

Dimensions in Inches (millimeters) are subject to change without notice.