



805-006
Series 805 Mighty Mouse Hermetic Receptacles
Triple-Start Threaded Ordering Information



Series 805 Hermetic Jam Nut Connector

Series 805 Hermetic Receptacles feature 304L stainless steel shells, fused vitreous glass insulators and Alloy 52 iron alloy contacts. Triple-start ACME thread provides fast mating and cross-threading protection. Mating plug connectors feature EMI springs and ratcheting anti-decoupling mechanism for resistance to vibration. 1000 PSI open face pressure. Fluorosilicone seals for water ingress protection. Contacts are gold-plated 50 microinches minimum.

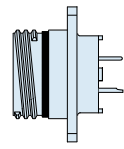
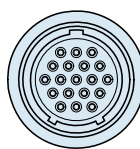
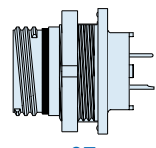
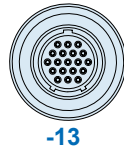
1 X 10⁻⁷ cc/second maximum helium leak rate.

Two Shell Styles: jam nut or square flange.

Solder Cup Contacts for #22 AWG wire, or **PC Tail Contacts** for attachment to flexible or rigid circuits.

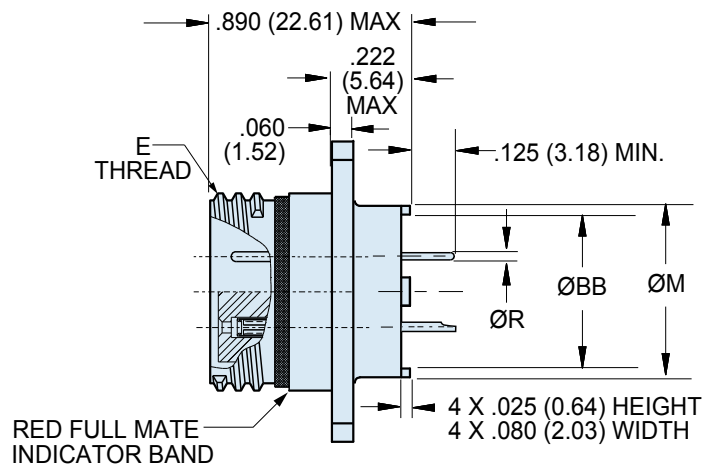
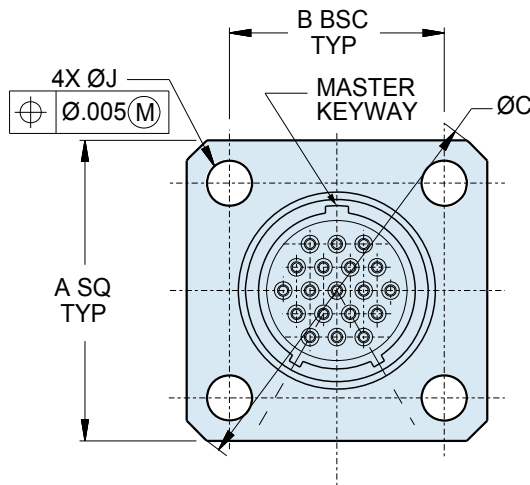
C

HOW TO ORDER SERIES 800 HERMETIC RECEPTACLES

Sample Part Number					
805-006	-07	Z1	12-26	C	A
Series	Shell Style	Shell Material / Finish	Shell Size- Insert Arrangement	Contact Type	Shell Key Position
<p>805-006 Hermetic Receptacle</p>	 <p>-02 Square Flange</p>  <p>-03 Solder Mount</p>  <p>-07 Jam Nut</p>  <p>-13 Weld Mount</p>	<p>Z1 Stainless Steel / Passivated</p> <p>ZL Stainless Steel / Nickel Plated</p> <p>*Titanium and Inconel® shell materials are available. Consult factory for ordering information.</p>	<p>See Page C-4 for Contact Arrangements</p>	<p>P Pin, Solder Cup</p> <p>C Pin, PC Tail</p> <p>S Socket, Solder Cup</p> <p>D Socket, PC Tail</p>	<p>A Position A (Normal)</p> <p>B Position B</p> <p>C Position C</p> <p>D Position D</p> <p>E Position E</p> <p>F Position F</p>

Dimensions in Inches (millimeters) are subject to change without notice.

805-006-02
 Series 805 Mighty Mouse Triple-Start
 Flange Mount Hermetic Receptacles



C

DIMENSIONS

Shell Size	A SQ		B BSC		BB		Ø C		Ø J Holes	K Threads	Ø M		Ø R Tail Dia.
	In.	mm.	In.	mm.	In.	mm.	In.	mm.			In.	mm.	
8	.850	21.59	.660	16.76	.236	5.99	1.150	29.21	.096 (2.44) .091 (2.31)	.5000-.1P-.3L-TS-2A	.330	8.38	#23 .018/.022 (0.46/0.56)
9	.913	23.19	.723	18.36	.322	8.18	1.230	31.24		.5625-.1P-.3L-TS-2A	.432	10.97	
10	.975	24.77	.785	19.94	.386	9.80	1.330	33.78		.6250-.1P-.3L-TS-2A	.493	12.52	#20 .024/.028 (0.61/0.71)
11	1.039	26.39	.848	21.54	.442	11.23	1.410	35.81		.6875-.1P-.3L-TS-2A	.553	14.05	
12	1.099	27.91	.909	23.09	.513	13.03	1.500	38.10		.7500-.1P-.3L-TS-2A	.620	15.75	#16 .060/.064 (1.52/1.63)
13	1.163	29.54	.973	24.71	.554	14.07	1.590	40.39		.8125-.1P-.3L-TS-2A	.661	16.79	
15	1.288	32.74	1.058	26.87	.594	15.09	1.750	44.45		.9375-.1P-.3L-TS-2A	.703	17.86	#12 .092/.096 (2.34/2.44)
18	1.475	37.47	1.255	31.88	.755	19.18	2.000	50.80		1.1250-.1P-.3L-TS-2A	.863	21.92	
19	1.537	71.06	1.327	33.71	.805	20.45	2.094	53.19		.126 (3.30)	1.1875-.1P-.3L-TS-2A	.912	23.16
21	1.663	42.24	1.452	36.88	.910	23.11	2.270	57.66		.130 (3.20)	1.3125-.1P-.3L-TS-2A	1.017	25.83
23	1.787	44.68	1.576	40.03	1.055	26.80	2.440	61.98		1.4375-.1P-.3L-TS-2A	1.162	29.51	

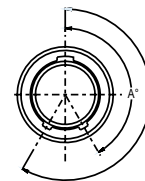
PERFORMANCE SPECIFICATIONS

DVV (VAC Sea Level)	#23 500 V., #20HD 750 V., #12 AND #16 1800 V.
Insulation Resistance	5000 Megohms Minimum
Operating Temperature	-55° C. to +150° C.
Immersion, Mated	MIL-STD-810 Method 512. One Meter for One Hour.
Hermeticity	1 x 10 ⁻⁷ cc/sec Helium Leak Rate @ 1 Atmosphere Diff.

MATERIALS AND FINISHES

Shell	304L Stainless Steel
Insulator	Fused Vitreous Glass
Seals	Fluorosilicone Rubber, Blue
Contacts	Iron Alloy (Alloy 52)

SERIES 805 KEY POSITIONS



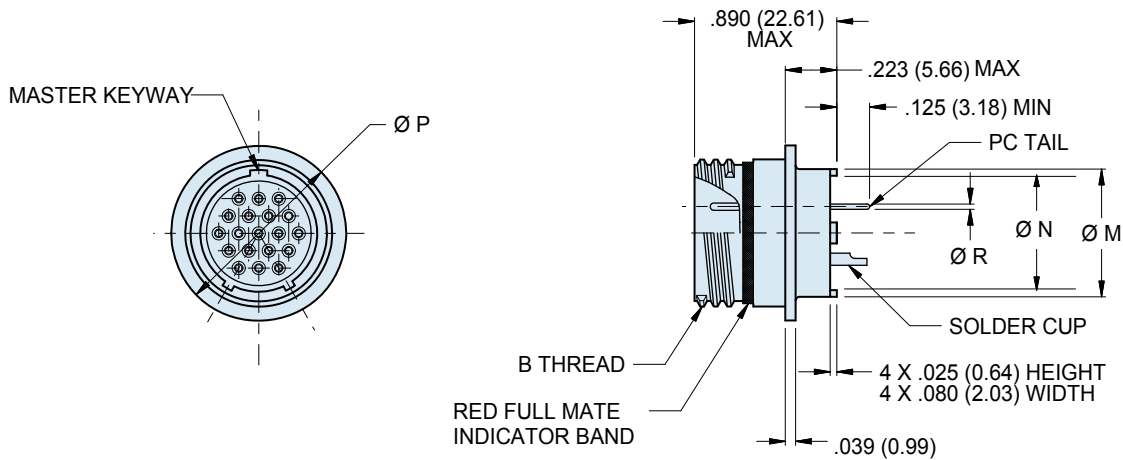
Key Position	Key Rotation	
	A°	B°
Normal (A)	150°	210°
B	75°	210°
C	95°	230°
D	140°	275°
E	75°	275°
F	95°	210°

Dimensions in Inches (millimeters) are subject to change without notice.



805-006-03

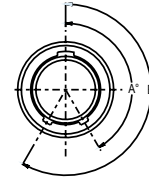
Series 805 Mighty Mouse Triple-Start
Solder Mount Hermetic Receptacles



DIMENSIONS

Shell Size	Ø P		B Threads	M Ø		N Ø		Ø R Tail Dia.
	In.	mm.		In.	mm.	In.	mm.	
8	.625	15.88	.5000-.1P-.3L-TS-2A	.330	8.38	.236	5.99	#23 .018/.022 (0.46/0.56)
9	.688	17.48	.5625-.1P-.3L-TS-2A	.432	10.97	.322	8.18	
10	.750	19.75	.6250-.1P-.3L-TS-2A	.493	12.52	.386	9.80	#20 .024/.028 (0.61/0.71)
11	.812	20.62	.6875-.1P-.3L-TS-2A	.553	14.05	.442	11.23	
12	.875	22.23	.7500-.1P-.3L-TS-2A	.620	15.75	.513	13.03	#16 .060/.064 (1.52/1.63)
13	.938	23.83	.7500-.1P-.3L-TS-2A	.661	16.79	.554	14.07	
15	1.062	26.97	.9375-.1P-.3L-TS-2A	.703	17.86	.594	15.09	#12 .092/.096 (2.34/2.44)
18	1.250	31.75	1.1250-.1P-.3L-TS-2A	.863	21.92	.755	19.18	
19	1.312	33.32	1.1875-.1P-.3L-TS-2A	.912	23.16	.805	20.45	
21	1.438	36.53	1.3725-.1P-.3L-TS-2A	1.017	25.83	.910	23.11	
23	1.562	39.67	1.4375-.1P-.3L-TS-2A	1.162	29.51	1.055	26.80	

SERIES 805 KEY POSITIONS



Key Position	Key Rotation	
	A°	B°
Normal (A)	150°	210°
B	75°	210°
C	95°	230°
D	140°	275°
E	75°	275°
F	95°	210°

Dimensions in Inches (millimeters) are subject to change without notice.

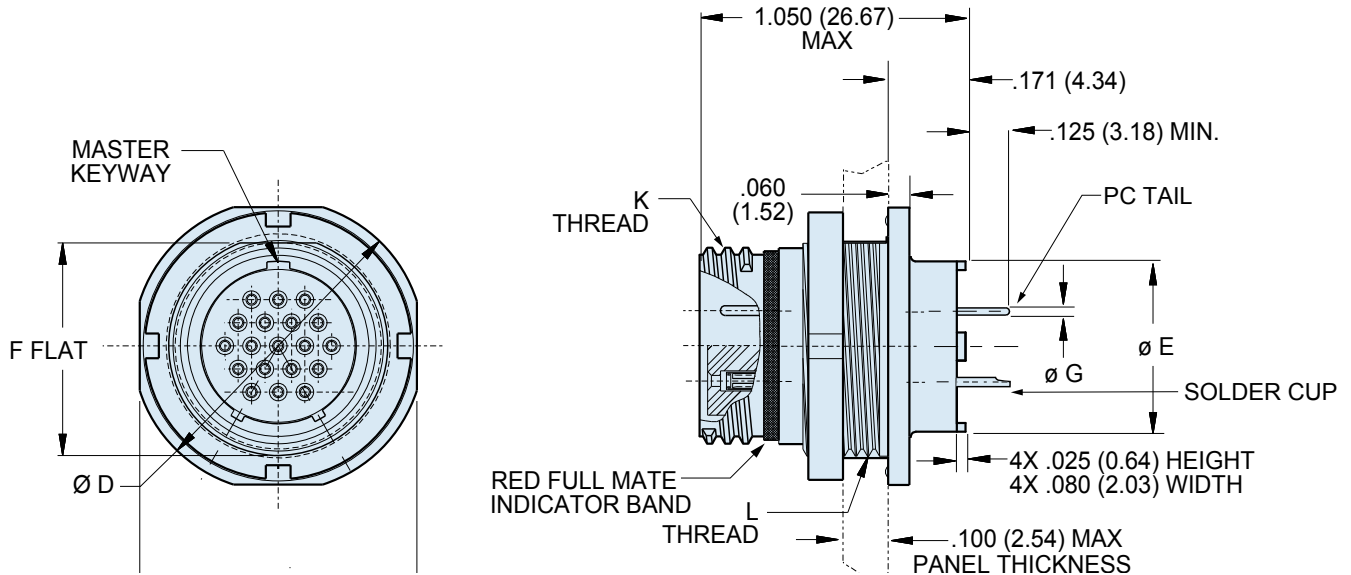
805-006-07

Series 805 Mighty Mouse Triple-Start
Jam Nut Mount Hermetic Receptacles



Series 80
Mighty Mouse

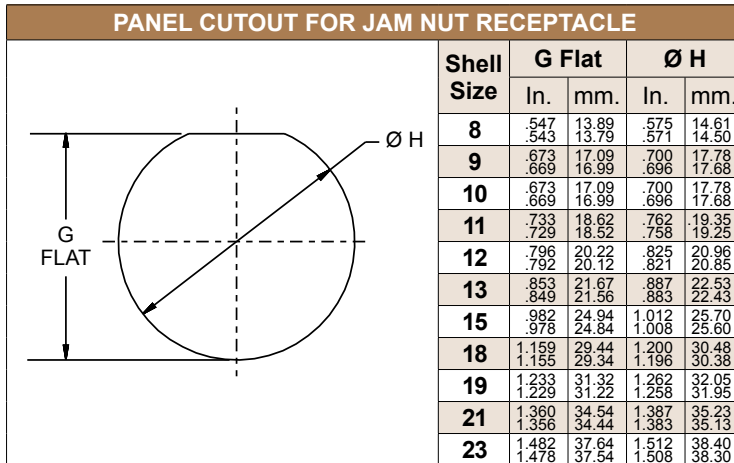
C



DIMENSIONS

Shell Size	D Ø		E Flat		F Flat		M Ø		N Ø		K Thread	L Thread	Ø R Tail Dia.
	In.	mm.	In.	mm.	In.	mm.	In.	mm.	In.	mm.			
8	.760	19.30	.730	18.54	.535	13.59	.330	8.38	.236	5.99	.5000-.1P-.3L-TS-2A	.5625-28 UNEF-2A	#23
9	.880	22.35	.850	21.59	.661	16.79	.432	10.97	.322	8.18	.5625-.1P-.3L-TS-2A	.6875-28 UN-2A	.018/.022 (0.46/0.56)
10	.880	22.35	.850	21.59	.661	16.79	.493	12.52	.386	9.80	.6250-.1P-.3L-TS-2A	.6875-28 UN-2A	#20
11	.955	24.26	.925	23.50	.721	18.31	.553	14.05	.442	11.23	.6875-.1P-.3L-TS-2A	.7500-28 UN-2A	.024/.028 (0.61/0.71)
12	1.060	26.92	1.035	26.29	.784	19.91	.620	15.75	.513	13.03	.7500-.1P-.3L-TS-2A	.8125-28 UN-2A	#16
13	1.120	28.45	1.090	27.69	.843	21.41	.661	16.79	.554	14.07	.8125-.1P-.3L-TS-2A	.8750-28 UN-2A	.060/.064 (1.52/1.63)
15	1.203	30.56	1.173	29.79	.970	24.64	.703	17.86	.594	15.09	.9375-.1P-.3L-TS-2A	1.0000-28 UN-2A	#12
18	1.389	35.28	1.359	34.52	1.147	29.13	.863	21.92	.755	19.18	1.1250-.1P-.3L-TS-2A	1.1875-28 UN-2A	.092/.096 (2.34/2.44)
19	1.450	36.83	1.420	36.07	1.221	31.01	.912	23.16	.805	20.45	1.1875-.1P-.3L-TS-2A	1.2500-28 UN-2A	
21	1.580	40.13	1.550	39.37	1.350	34.29	1.017	25.83	.910	23.11	1.3125-.1P-.3L-TS-2A	1.3750-28 UN-2A	
23	1.705	43.31	1.675	42.55	1.470	37.34	1.162	29.51	1.055	26.80	1.4375-.1P-.3L-TS-2A	1.5000-25 UN-2A	

PANEL CUTOUT FOR JAM NUT RECEPTACLE



SERIES 805 KEY POSITIONS

Key Position	Key Rotation	
	A°	B°
Normal (A)	150°	210°
B	75°	210°
C	95°	230°
D	140°	275°
E	75°	275°
F	95°	210°

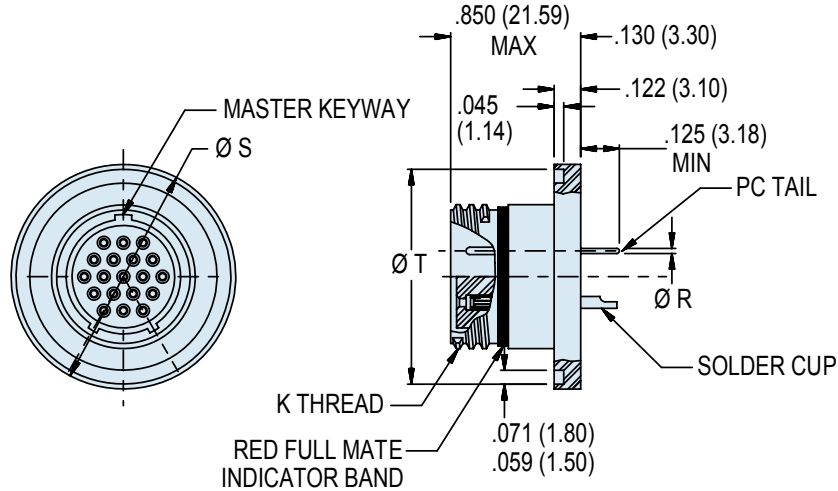
Dimensions in Inches (millimeters) are subject to change without notice.



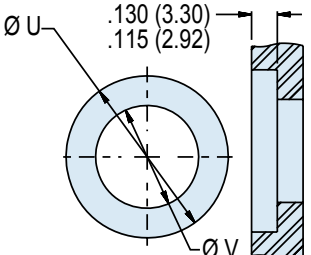
805-006-013

Series 805 Mighty Mouse Triple-Start
Front Panel Weld Mount Hermetic Receptacles

C



PANEL CUTOUT FOR WELD MOUNT RECEPTACLE



Shell Size	Ø U ± .003		Ø V Min	
	In.	mm.	In.	mm.
8	.794	20.16	.350	8.89
9	.918	23.32	.455	11.56
10	.981	24.92	.520	13.21
11	1.044	26.52	.575	14.61
12	1.106	28.09	.650	16.51
13	1.168	29.67	.685	17.40
15	1.294	32.87	.730	18.54
18	1.481	37.62	.890	22.61
19	1.546	39.27	.940	23.88
21	1.671	42.44	1.040	26.42
23	1.801	45.75	1.190	30.23

Dimensions in Inches (millimeters) are subject to change without notice.

805-006-013

Series 805 Mighty Mouse Triple-Start
Front Panel Weld Mount Hermetic Receptacles

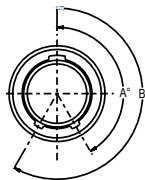


Series 80
Mighty Mouse

C

DIMENSIONS					
Shell Size	Ø S ± .002		Ø T ± .006		Ø R Tail Dia.
	In.	mm.	In.	mm.	
8	.788	20.02	.745	18.92	#23 .018/.022 (0.46/0.56)
9	.912	23.16	.869	22.07	
10	.975	24.77	.933	23.70	
11	1.038	26.37	.995	25.27	#20 .024/.028 (0.61/0.71)
12	1.100	27.94	1.057	26.85	
13	1.162	29.51	1.119	28.42	#16 .060/.064 (1.52/1.63)
15	1.288	32.72	1.245	31.63	
18	1.475	37.47	1.430	36.32	
19	1.540	39.12	1.495	37.97	#12 .092/.096 (2.34/2.44)
21	1.665	42.29	1.620	41.15	
23	1.795	45.59	1.750	44.45	

SERIES 805 KEY POSITIONS



Key Position	Key Rotation	
	A°	B°
Normal (A)	150°	210°
B	75°	210°
C	95°	230°
D	140°	275°
E	75°	275°
F	95°	210°

Dimensions in Inches (millimeters) are subject to change without notice.