

# Series 80 Mighty Mouse Contacts and Tools Adapters, #20HD Contacts



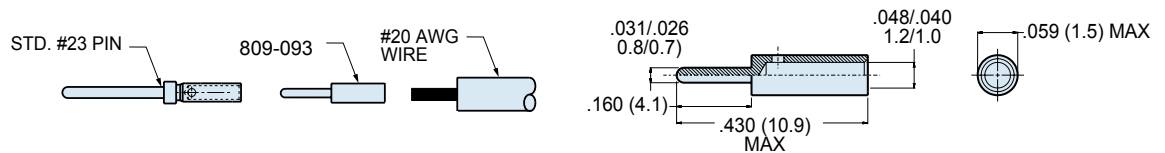
## Adapter for Crimping #20 AWG Wire to Size #23 Contacts



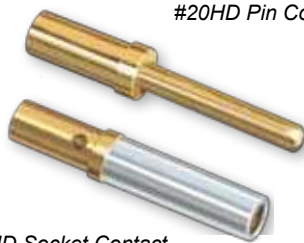
#20 AWG Wire Adapter

Size #22 AWG wire is the largest wire size that fits standard size 23 contacts. Use this adapter to attach larger #20 gage wire. First, crimp wire to adapter, then crimp the adapter into the size #23 contact. Adapters are made of tellurium copper alloy #1452, and are gold plated. Crimp with M22520/1-01 tool and 809-138 (Daniels TH653) positioner. These adapters cannot be removed from connectors.

Adapter Size	Wire Size	Part Number	Tool Code
#22-20	#20	<b>809-093</b>	J, L



## Size #20HD Crimp Contacts

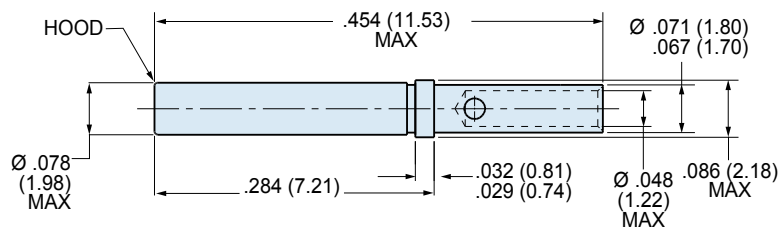
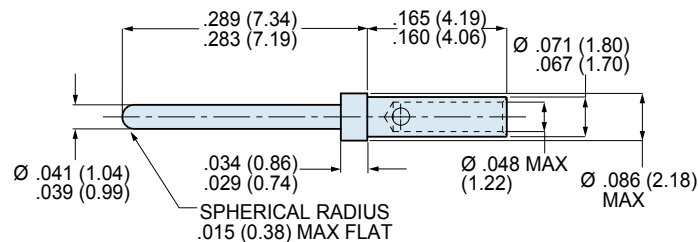


#20HD Pin Contact

#20HD Socket Contact

High-density size #20HD contacts accept #20 to #24 AWG wire. At rated test current of 7.5 amps, the maximum voltage drop is 55 millivolts. Contacts are gold-plated copper alloy. Socket contacts feature stainless steel hoods to protect against probe damage. Contacts are bulk packaged. Terminate with M22520/2-01 crimper and 809-206 positioner.

Contact Type	Wire Size	Part Number	Tool Code
Pin	#20 – #24	<b>809-204</b>	A, I
Socket	#20 – #24	<b>809-205</b>	A, I



CRIMP TENSILE STRENGTH		
Values are in pounds and are minimums.		
Wire Gage	Silver or Tin Coated Copper Wire	Nickel Coated Copper Wire
#20	20	19
#22	12	8
#24	8	6

### Material and Finish

Beryllium copper alloy, 50 microinches gold plated per ASTM B488 Type II Code C Class 1.25 over nickel plate per QQ-N-290 Class 2, 50-100 microinches. Socket contact hood: stainless steel, passivated per AMS-QQ-P-35.

### Specifications

Current Rating: 7.5 Amps maximum  
Temperature Range: -65° to +200° C  
Socket Contact Minimum Separation Force: 0.7 ounces

Dimensions in inches (millimeters) and are subject to change without notice.