



Series 811 Mighty Mouse High Density (HD) Pre-Wired Square Flange Receptacle Connectors

811-003-02 and 811-004-02

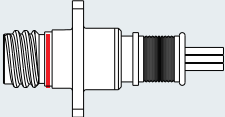
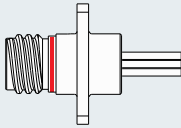


Square Flange Pigtail Receptacles

Series 811 Mighty Mouse High Density panel mount receptacles feature damage-resistant double-start ACME mating threads. These receptacles are factory-terminated to insulated wire and backpotted with epoxy. The TwistPin contact system meets requirements of MIL-DTL-83513 and provides outstanding resistance to high levels of shock and vibration. Choose Type K general purpose Teflon® wire or Type J lightweight space-grade Tefzel® wire. 3A current rating, 600 VAC dielectric withstanding voltage.

HOW TO ORDER SERIES 811 SQUARE FLANGE PIGTAIL RECEPTACLES

Sample Part Number

811-003-02	MT	5-7	P	A	6	K	7	-18
Series	Shell Material and Finish	Shell Size - Insert Arr.	Contact Type	Key Position	Wire Size	Wire Type	Wire Color	Wire Length (Inches)
 811-003-02 Panel Mount Square Flange Receptacle Connector with Termination Platform for Shield Attachment or Overmolding	ME Electroless Nickel	5-7 7 Contacts	P Pin Contacts	A Normal	6 #26	K PTFE insulation, silver-coated, 200°C, (M22759/11)	1 White	12 18 36 72
	MT Nickel-PTFE	6-12 12 Contacts	S Socket Contacts	Alternate Key Positions B C D E F	8 #28 (Color code 1 or 7 only)	J Tefzel® insulation, high strength lightweight silver-coated, 200°C, (M22759/33)	5 Color code per MIL-STD-681 (striped)*	7 10 Solid colors, repeating
ZR Black Zinc-Nickel	7-22 22 Contacts	8-30 30 Contacts						
 811-004-02 Low Profile Panel Mount Square Flange Receptacle Connector		9-42 42 Contacts						

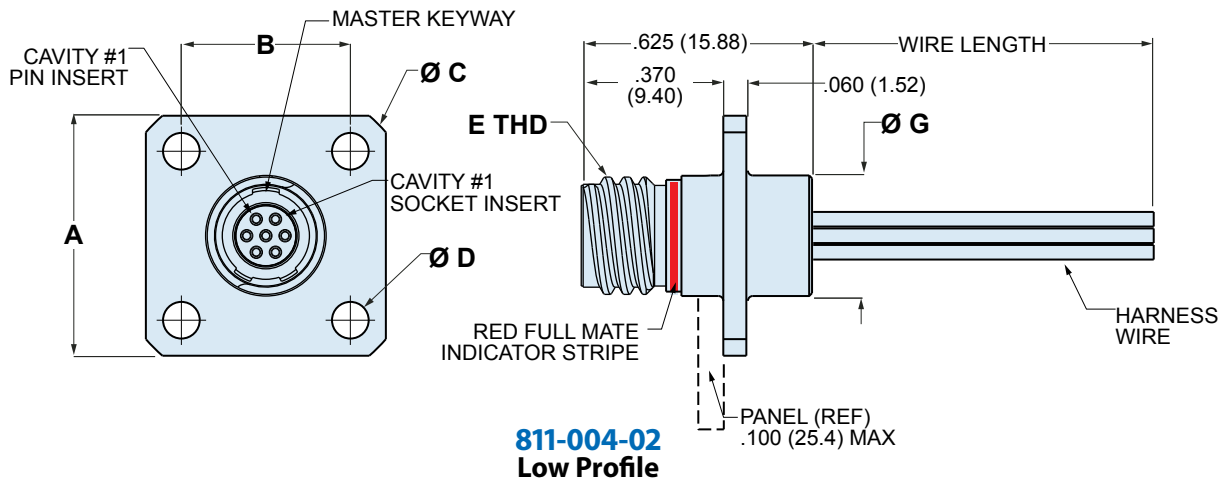
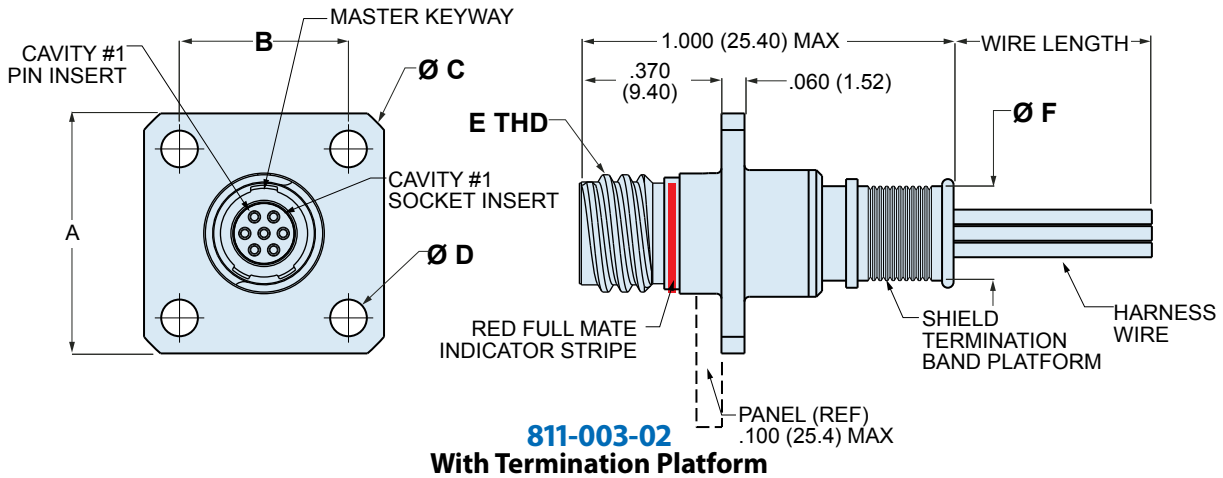
*Size 28 AWG and Size 30 AWG J type wire not available in striped color code 5

Dimensions in Inches (millimeters) are subject to change without notice.

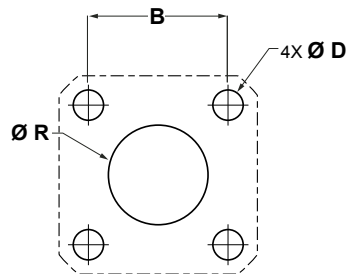
Series 811 Mighty Mouse High Density (HD)
Pre-Wired Square Flange Receptacle Connectors
811-003-02 and 811-004-02



Mighty Mouse
High Density



DIMENSIONS													
Shell Size	A Square		B Square		Ø C		Ø D		E Thread	Ø F		Ø G	
	In.	mm.	In.	mm.	In.	mm.	In.	mm.		In.	mm.	In.	mm.
5	.625	15.88	.440	11.18	.825	20.96	.093	2.36	.3125-.05P-.1L-2A	.246	6.25	.320	8.13
6	.725	18.42	.530	13.46	.950	24.13	.093	2.36	.3750-.05P-.1L-2A	.286	7.26	.375	9.53
7	.800	20.32	.600	15.24	1.050	26.67	.093	2.36	.4375-.05P-.1L-2A	.391	9.93	.480	12.19
8	.850	21.59	.650	16.51	1.125	28.58	.093	2.36	.5000-.05P-.1L-2A	.443	11.25	.540	13.72
9	.950	24.13	.750	19.05	1.250	31.75	.093	2.36	.5625-.05P-.1L-2A	.498	12.65	.600	15.24



Shell Size	Ø R	
	In.	mm.
5	.350	8.89
6	.390	9.91
7	.500	12.70
8	.560	14.22
9	.620	15.75

Dimensions in Inches (millimeters) are subject to change without notice.