



Series 811 Mighty Mouse High Density (HD) Pre-Wired Jam Nut Receptacle Connectors

811-003-07 and 811-004-07

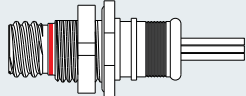
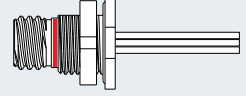
Jam Nut Pigtail Receptacles



Series 811 Mighty Mouse High Density rear panel mount jam nut receptacles feature damage-resistant double-start ACME mating threads. These receptacles are factory-terminated to insulated wire and backpotted with epoxy. The TwistPin contact system meets requirements of MIL-DTL-83513 and provides outstanding resistance to high levels of shock and vibration. Choose Type K general purpose Teflon® wire or Type J lightweight space-grade Tefzel® wire. 3A current rating, 600 VAC dielectric withstanding voltage.

HOW TO ORDER SERIES 811 JAM NUT PIGTAIL RECEPTACLES

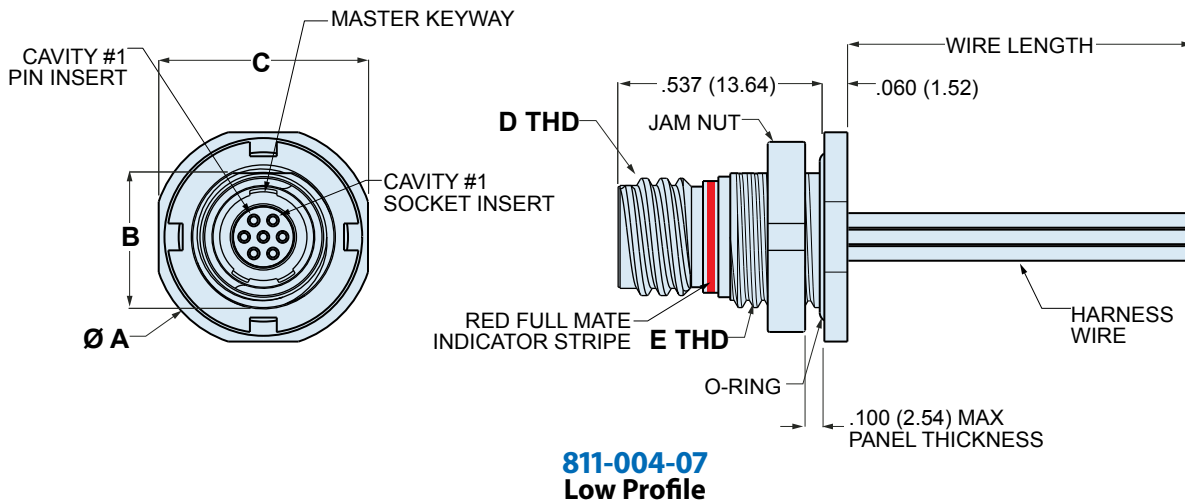
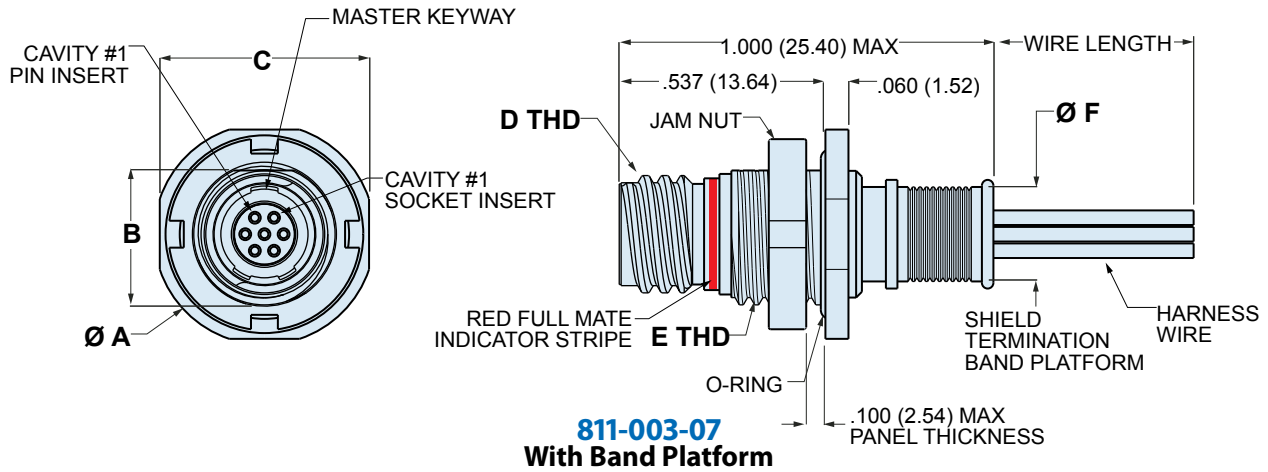
Sample Part Number

811-003-07	MT	5-7	P	A	6	K	7	-18
Series	Shell Material and Finish	Shell Size - Insert Arr.	Contact Type	Key Position	Wire Size	Wire Type	Wire Color	Wire Length (Inches)
 <p>811-003-07 Panel Mount Jam Nut Receptacle Connector with Band Platform for Shield Attachment or Overmolding</p>	ME Electroless Nickel	5-7 7 Contacts	P Pin Contacts	A Normal	6 #26	K PTFE insulation, silver-coated, 200°C, (M22759/11)	1 White	12 18 36 72
	MT Nickel-PTFE ZR Black Zinc-Nickel	6-12 12 Contacts 7-22 22 Contacts 8-30 30 Contacts 9-42 42 Contacts	S Socket Contacts	Alternate Key Positions B C D E F	8 #28 (Color code 1 or 7 only) 0 #30 (Wire Type J, color code 1 or 7 only)	J Tefzel® insulation, high strength lightweight silver-coated, 200°C, (M22759/33)	5 Color code per MIL-STD-681 (striped)* 7 10 Solid colors, repeating	Specify any length from 2 inches to 144 inches
 <p>811-004-07 Low Profile Panel Mount Jam Nut Receptacle Connector with No Band Platform</p>								

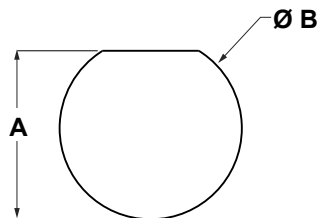
*Size 28 AWG and Size 30 AWG J type wire not available in striped color code 5

Dimensions in Inches (millimeters) are subject to change without notice.

Series 811 Mighty Mouse High Density (HD)
Pre-Wired Jam Nut Receptacle Connectors
811-003-07 and 811-004-07



DIMENSIONS										
Shell Size	Ø A		B		C		D Thread	E THD UN-2A	Ø F	
	In.	mm.	In.	mm.	In.	mm.			In.	mm.
5	.575	14.61	.350	8.89	.545	13.84	.3125-.05P-.1L-2A	.375-28	.246	6.25
6	.635	16.13	.410	10.41	.595	15.11	.3750-.05P-.1L-2A	.4375-28	.286	7.26
7	.755	19.18	.536	13.61	.723	18.36	.4375-.05P-.1L-2A	.5625-32	.391	9.93
8	.755	19.18	.536	13.61	.723	18.36	.5000-.05P-.1L-2A	.5625-32	.443	11.25
9	.830	21.08	.596	15.14	.790	20.07	.5625-.05P-.1L-2A	.625-28	.498	12.65



PANEL CUTOUT				
Shell Size	A		B Ø	
	In.±.002	mm.±0.05	In.±.002	mm.±0.05
5	.356	9.04	.385	9.78
6	.416	10.57	.447	11.35
7	.542	13.77	.572	14.53
8	.542	13.77	.572	14.53
9	.602	15.29	.635	16.13

Dimensions in Inches (millimeters) are subject to change without notice.