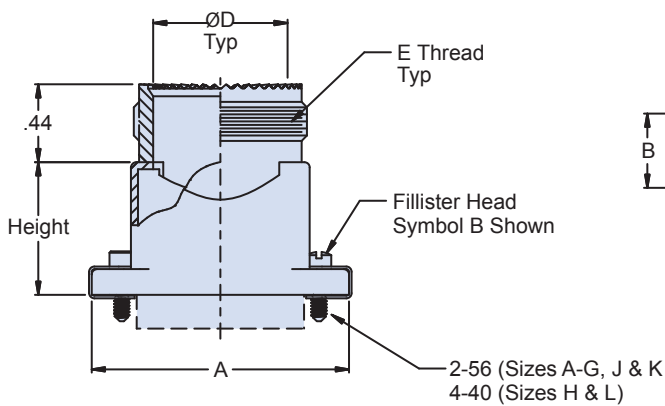
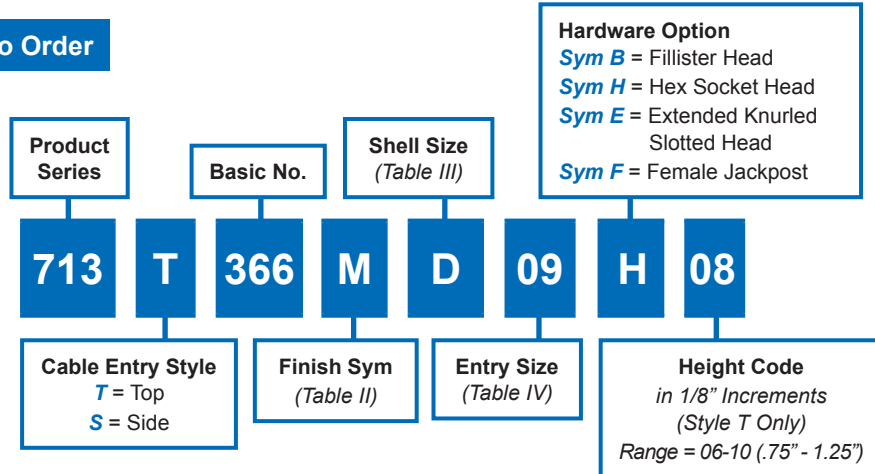
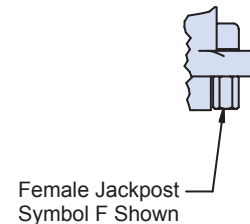
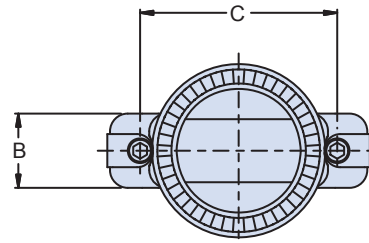


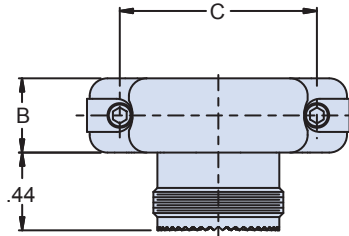
Series 79 Micro-Crimp connector adapter with MIL-DTL-38999 Series III (H code) accessory thread and interface teeth
How To Order

**Style T
Top Entry**

Material and Finish

- Adapter: See Table II
- Retaining Clip, Washers, Jackscrews, Nuts, Jackposts: CRES/Passivate

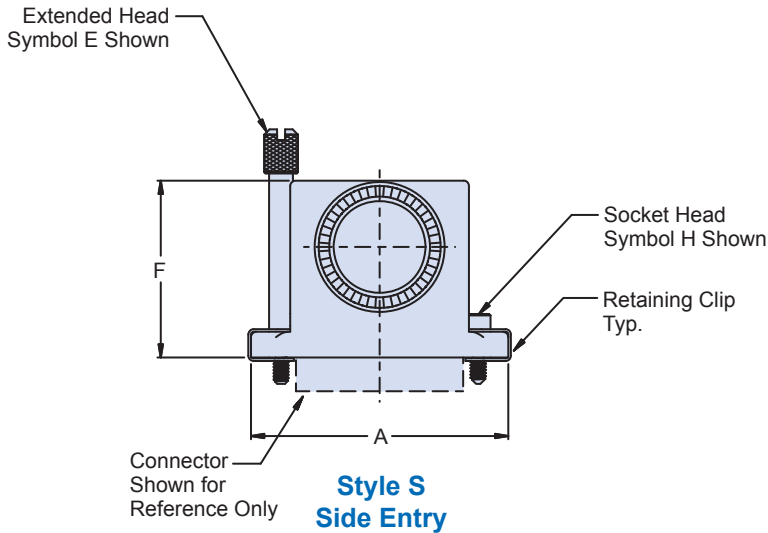
Notes

- Symbol E hardware is not available with style T (Top) cable entries for shell sizes A through E, and for max entries on shell sizes F and G. Symbol E hardware with Style T cable entries may interfere with coupling from mating backshell.
- Consult factory for use of Symbol E hardware on Style T (Top) cable entries.
- MIL-DTL-38999, Series III accessory interface (Glenair Code H). Entry size corresponds to MIL-DTL-38999 Series III shell size.

713-366 Series 79 Micro-Crimp Connector Adapter Top or Side Entry



Sym	Material	Finish Description
B	Aluminum	Cadmium, Olive Drab
C		Anodize, Black
M		Electroless Nickel
MT		Nickel-PTFE
NF		Cadmium/Olive Drab Over Electroless Nickel
UCR		Zinc Cobalt/Black
ZN		Zinc Nickel/Olive Drab Over Electroless Nickel
ZNU		Zinc Nickel/Black Over Electroless Nickel
Z1	Stainless Steel	Passivate
ZM		Electroless Nickel
ZMT		Nickel-PTFE
ZW		Cadmium/Olive Drab Over Electroless Nickel



Shell Size	A Max	B Max	C Dim	Max Entry
A	.935 (23.7)	.450 (11.4)	.565 (14.4)	09
B	1.085 (27.6)	.450 (11.4)	.715 (18.2)	11
C	1.235 (31.4)	.450 (11.4)	.865 (22.0)	11
D	1.335 (33.9)	.450 (11.4)	.965 (24.5)	13
E	1.485 (37.7)	.450 (11.4)	1.115 (28.3)	13
F	1.635 (41.5)	.450 (11.4)	1.265 (32.1)	15
G	1.585 (40.3)	.533 (13.5)	1.215 (30.9)	15
H	2.320 (58.9)	.560 (14.2)	1.800 (45.7)	17
J	1.990 (50.5)	.450 (11.4)	1.615 (41.0)	17
K	2.385 (60.6)	.450 (11.4)	2.015 (51.2)	17
L	2.556 (64.9)	.560 (14.2)	2.036 (51.7)	19

Entry Size	Conduit Size (Ref)	ØD	E Thread ISO Metric	F Max
09	06, 09	.281 (7.14)	M12 X 1.0-6g	.97 (24.6)
11	10, 12	.397 (10.1)	M15 X 1.0-6g	1.09 (27.7)
13	14, 16	.511 (13.0)	M18 X 1.0-6g	1.21 (30.7)
15	20	.636 (16.2)	M22 X 1.0-6g	1.37 (34.8)
17	24	.761 (19.3)	M25 X 1.0-6g	1.49 (37.8)
19	28	.875 (22.2)	M28 X 1.0-6g	1.60 (40.6)