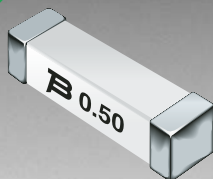



*RoHS COMPLIANT



BOURNS®

Features

- For use in telecommunication circuit applications requiring low current protection with high surge tolerance
- Overcurrent protection to Telcordia GR-1089-CORE Issue 4 (B1250T only) & UL 1950/60950
- Bourns® TISP® products are recommended for the overvoltage section of the circuit
- Agency recognition:  File: E198545
- RoHS compliant*

Telefuse™ SMD Power Cross Protection Fuse

Electrical Characteristics

Model Number	Ampere Rating (A)	Voltage Rating (VRMS)	Typical Cold Resistance (ohms)	Volt-drop @ 100 % I_n (Volts) max.	Melting I^2T < 10 msec (A^2 sec.)	Melting I^2T @ 10 I_n (A^2 sec.)	Maximum Power Dissipation (W)
B0500T	0.500	600	0.350	0.23	2	2.3	0.20
B1250T	1.25	600	0.075	0.18	14	17	0.40
B2000T	2.0	600	0.056	0.16	33	37	0.52

Temperature Range-55 °C to +125 °C

Environmental Characteristics

Thermal ShockMIL-STD-202, Method 107, Test Condition B (-65 °C to +125 °C)

ShockMIL-STD-202, Method 213, Test Condition I (100 Gs peak for 6 milliseconds)

VibrationMIL-STD-202, Method 201 (10-55 Hz, 0.06 inch total excursion)

Salt SprayMIL-STD-202, Method 101, Test Condition B (48 hrs.)

Insulation ResistanceMIL-STD-202, Method 302, Test Condition A (after opening)

10,000 ohms minimum

Solderability ..MIL-STD-202, Method 208

Resistance to Solder HeatMIL-STD-202, Method 210, Test Condition J (235 °C, 30 sec.)

Physical Characteristics

Body Material

.....Ceramic with tin plated brass caps

SolderLead free

Solder Reflow Temperature240 °C for 30 seconds
260 °C for 3 seconds

Packaging2,000 pcs. per 13 " reel

Lightning Surge Withstand Capabilities

Max. Rise/Min. Decay (μ s)	Repetitions		Minimum Peak Voltage (V)	Minimum Withstand Peak Current (A)		
	Total	Each Polarity		B0500T	B1250T	B2000T
10/1000	50	25	1000	25	100	120
10/360	50	25	1000	30	125	150
2/10	20	10	2500	120	500	600
10/360	10	5	1000	30	125	150
2/10	2	1	5000	120	500	600
8/20	2	1	5000	75	300	350

Test Methods per GR-1089/TIA-968-A (FCC Pt. 68)

AC Power Fault Tests

GR-1089 1st Level Test	Voltage (VRMS)	Short Circuit Current (A)	Applications	Duration	Fuse Characteristics		
					B0500T	B1250T	B2000T
1	50	0.33	1	15 min.	Parts pass all 1st Level tests		
2	100	0.17	1	15 min.			
3	200,400,600	1	60	1 sec.			
4	1000	1	60	1 sec.			
6	600	0.5	1	30 sec.			
7	440	2.2	5	2 sec.			
8	600	3	5	1.1 sec.	Will open		
9	1000	5	5	0.4 sec.	Will open		

AC Current Limiting Protector Tests/Fusing Coordination Tests

Voltage (Vac)	Current (A)	Duration	Maximum Time for Fuse to Open (Seconds)		
			B0500T	B1250T	B2000T
600	2.2	Up to 15 Min.	1.0	900	Will not open
600	2.6		0.8	50	2000
600	3.0		0.5	10	100
600	3.75		0.3	5	10
600	5		0.2	2	3
600	7		0.08	1	2
600	10		0.04	0.5	0.7
600	12.5		0.01	0.2	0.3
600	20		0.005	0.07	0.1
600	25		0.004	0.04	0.07
600	30		0.003	0.02	0.05



Asia-Pacific:

TEL +886- (0)2 25624117

FAX +886- (0)2 25624116

Europe:

TEL +41-41 7685555

FAX +41-41 7685510

The Americas:

TEL +1-951 781-5500

FAX +1-951 781-5700

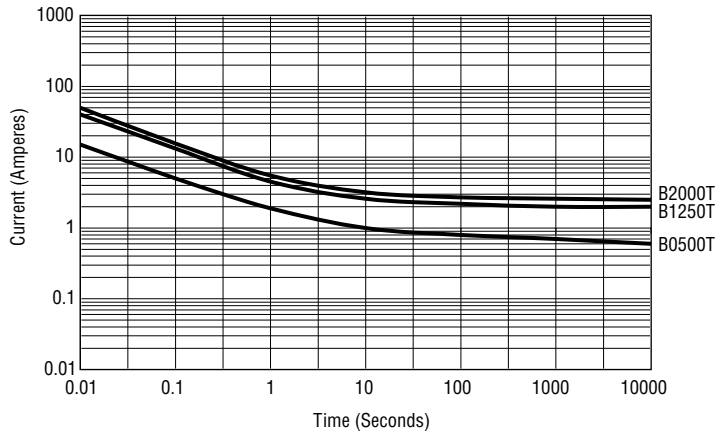
www.bourns.com

*RoHS Directive 2002/95/EC Jan 27 2003 including Annex.

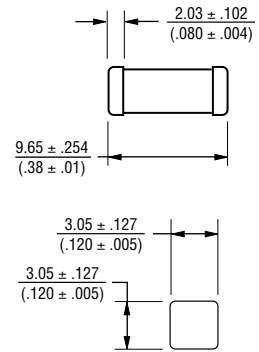
Specifications are subject to change without notice.

Customers should verify device performance in their specific applications.

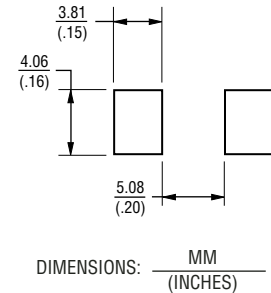
Time/Current Characteristic Curve



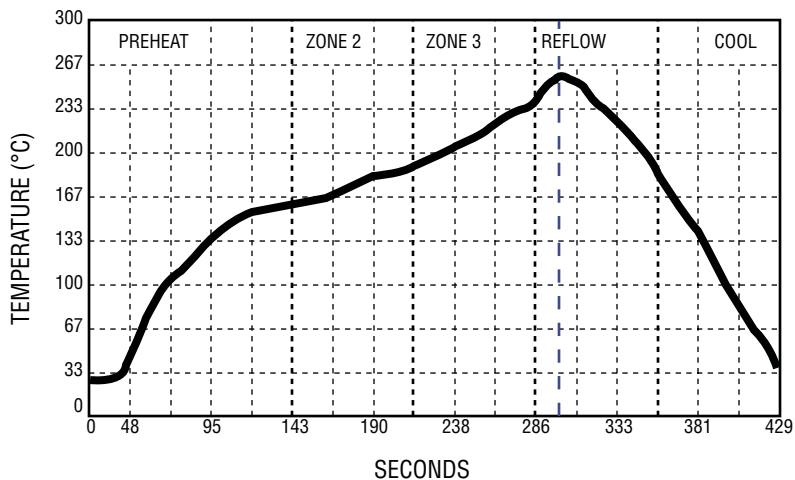
Product Dimensions



Recommended Pad Layout



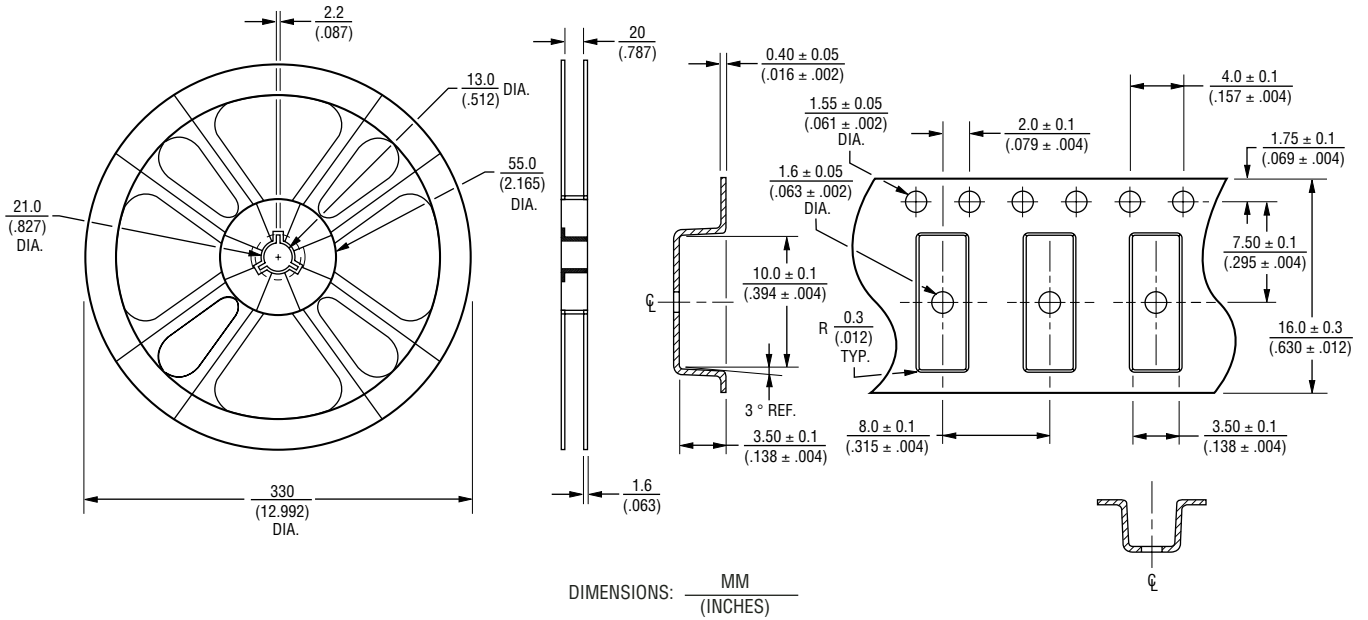
Solder Profile - 260 °C for 3 Seconds



Telefuse™ SMD Power Cross Protection Fuse

BOURNS®

Packaging Specifications



REV. 01/09

"Telefuse" is a trademark of Bourns, Inc.

Specifications are subject to change without notice.

Customers should verify actual device performance in their specific applications.