

# FLD-304-15-YM

304 Series™ Flood Luminaires – 15° Flood – Yoke Mount

## Product Description

Slim, low profile design. Luminaire is constructed from rugged die cast and extruded aluminum components. LED driver is mounted in a sealed weather-tight center chamber that allows for access below the luminaire. High performance heat sinks specifically designed for LED floodlight application. Luminaire mounts with stainless steel adjustable yoke mount which allows for +/- 90° adjustment in 5° increments.

## Performance Summary

Utilizes BetaLED® Technology

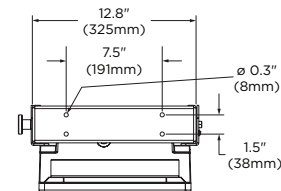
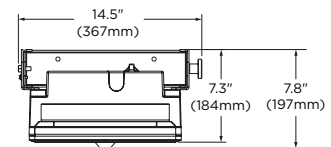
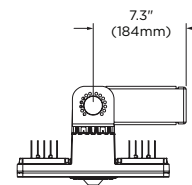
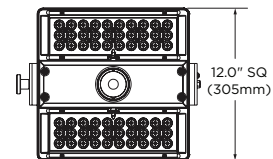
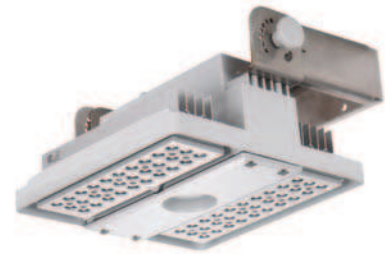
Patented NanoOptic® Product Technology

Made in the U.S.A. of U.S. and imported parts

CRI: Minimum 70 CRI

CCT: 5700K (+/- 500K) Standard, 4000K (+/- 300K)

Limited Warranty: 10 years on luminaire/10 years on Colorfast DeltaGuard® finish†



## Ordering Information

Example: FLD-304-15-YM-04-D-UL-SV-700-OPTIONS

| FLD-304 | 15              | YM         |                 | D       |                                                                          |                                                                                                      |                                                            |                                                                                                                                                                                                                                                                                                                                                                                                                                                                                                                                                                                |
|---------|-----------------|------------|-----------------|---------|--------------------------------------------------------------------------|------------------------------------------------------------------------------------------------------|------------------------------------------------------------|--------------------------------------------------------------------------------------------------------------------------------------------------------------------------------------------------------------------------------------------------------------------------------------------------------------------------------------------------------------------------------------------------------------------------------------------------------------------------------------------------------------------------------------------------------------------------------|
| Product | Optic           | Mounting   | LED Count (x10) | Version | Voltage                                                                  | Color Options                                                                                        | Drive Current                                              | Options                                                                                                                                                                                                                                                                                                                                                                                                                                                                                                                                                                        |
| FLD-304 | 15<br>15° Flood | YM<br>Yoke | 04<br>06        | D       | UL<br>Universal<br>120-277V<br>UH<br>Universal<br>347-480V<br>34<br>347V | SV<br>Silver<br>(Standard)<br>BK<br>Black<br>BZ<br>Bronze<br>PB<br>Platinum<br>Bronze<br>WH<br>White | 700<br>700mA<br>(Standard)<br>525<br>525mA<br>350<br>350mA | <b>40K 4000K Color Temperature</b><br>- Color temperature per luminaire<br><b>DIM 0-10V Dimming</b><br>- Control by others<br>- Refer to dimming spec sheet for details<br>- Can't exceed specified drive current<br><b>F Fuse</b><br>- When code dictates fusing, use time delay fuse<br>- Not available with all ML options. Refer to ML spec sheet for availability with ML options<br>- Must select voltage other than UH<br><b>ML Multi-Level</b><br>- For details, refer to the ML spec sheet for 304 Series™ luminaires<br>- For downlight applications at 0° tilt only |

† See [www.cree.com/lighting/products/warranty](http://www.cree.com/lighting/products/warranty) for warranty terms.



Rev. Date: 12/10/2012



### Product Specifications

#### CONSTRUCTION & MATERIALS

- Slim, low profile design
- Luminaire is constructed from rugged die cast and extruded aluminum components
- LED driver is mounted in a sealed weather-tight center chamber that allows for access from below the luminaire
- High performance aluminum heat sinks specifically designed for LED floodlight applications
- Luminaire mounts with stainless steel adjustable yoke which allows for +/- 90° adjustment in 5° increments
- Exclusive Colorfast DeltaGuard® finish features an E-Coat epoxy primer with an ultradurable powder topcoat, providing excellent resistance to corrosion, ultraviolet degradation and abrasion. Standard is silver. Bronze, black, white, and platinum bronze are also available

#### ELECTRICAL SYSTEM

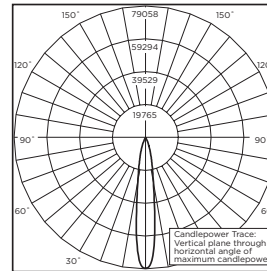
- **Input Voltage:** 120-277V or 347-480V, 50/60Hz, Class 1 drivers
- **Power Factor:** > 0.9 at full load
- **Total Harmonic Distortion:** < 20% at full load
- Integral 10kV surge suppression protection standard
- To address inrush current, slow blow fuse or type C/D breaker should be used

#### REGULATORY & VOLUNTARY QUALIFICATIONS

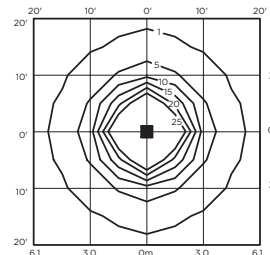
- cULus Listed
- Suitable for wet locations
- Enclosure rated IP66 per IEC 60529
- Consult factory for CE Certified products
- Certified to ANSI C136.31-2001, 3G bridge and overpass vibration standards
- 10kV surge suppression protection tested in accordance with IEEE/ANSI C62.41.2
- Luminaire and finish endurance tested to withstand 5,000 hours of elevated ambient salt fog conditions as defined in ASTM Standard B 117
- RoHS Compliant
- Meets Buy American requirements within ARRA

### Photometry

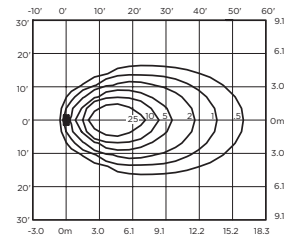
All published luminaire photometric testing performed to IESNA LM-79-08 standards by a NVLAP certified laboratory.



ITL Test Report #: 75334  
FLD-304-15-\*\*-06-D-UL-700-40K  
Initial Delivered Lumens: 11,437



FLD-304-15-\*\*-06-D-UL-700  
Mounting Height: 25' (7.6m) A.F.G.  
Initial Delivered Lumens: 11,828  
0° Tilt  
Initial FC at grade



FLD-304-15-\*\*-06-D-UL-700  
Mounting Height: 10' (3.0m) A.F.G.  
Initial Delivered Lumens: 11,828  
60° Tilt  
Initial FC at grade

#### IES Files

To obtain an IES file specific to your project consult:  
<http://www.cree.com/lighting/tools-and-support/interior-ies-configuration-tool>

### Lumen Output, Electrical, and Lumen Maintenance Data

| 15° Flood Distribution     |                          |                          |                       |               |      |      |      |      |      |                                                             |
|----------------------------|--------------------------|--------------------------|-----------------------|---------------|------|------|------|------|------|-------------------------------------------------------------|
| LED Count (x10)            | 5700K                    | 4000K                    | System Watts 120-480V | TOTAL CURRENT |      |      |      |      |      | 50K Hours Projected Lumen Maintenance Factor @ 15°C (59°F)* |
|                            | Initial Delivered Lumens | Initial Delivered Lumens |                       | 120V          | 208V | 240V | 277V | 347V | 480V |                                                             |
| <b>350mA @ 25°C (77°F)</b> |                          |                          |                       |               |      |      |      |      |      |                                                             |
| 04                         | 4,671                    | 4,305                    | 47                    | 0.39          | 0.24 | 0.21 | 0.19 | 0.15 | 0.11 | 94%                                                         |
| 06                         | 6,958                    | 6,413                    | 68                    | 0.59          | 0.35 | 0.30 | 0.27 | 0.20 | 0.15 |                                                             |
| <b>525mA @ 25°C (77°F)</b> |                          |                          |                       |               |      |      |      |      |      |                                                             |
| 04                         | 6,540                    | 6,028                    | 68                    | 0.58          | 0.34 | 0.30 | 0.27 | 0.21 | 0.16 | 93%                                                         |
| 06                         | 9,741                    | 8,978                    | 105                   | 0.91          | 0.53 | 0.46 | 0.40 | 0.30 | 0.22 |                                                             |
| <b>700mA @ 25°C (77°F)</b> |                          |                          |                       |               |      |      |      |      |      |                                                             |
| 04                         | 7,942                    | 7,319                    | 94                    | 0.81          | 0.47 | 0.41 | 0.36 | 0.28 | 0.20 | 91%                                                         |
| 06                         | 11,828                   | 10,902                   | 141                   | 1.26          | 0.72 | 0.59 | 0.54 | 0.39 | 0.28 |                                                             |

\*Projected L<sub>70</sub> (10K) Hours: > 60,000. For recommended lumen maintenance factor data see TD-13.

### Weight

| LED Count (x10) | Weight          |
|-----------------|-----------------|
| 04              | 23 lbs (10.4kg) |
| 06              | 23 lbs (10.4kg) |

