

## LOW DROPOUT VOLTAGE REGULATOR

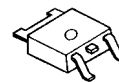
### ■ GENERAL DESCRIPTION

The NJM2391 is low dropout voltage regulators featuring high precision voltage.

It is suitable for Notebook PCs, PC cards and hard disks where 3.3V need to be generated from 5V supply.

A small TO-252 package is adopted for the space saving.

### ■ PACKAGE OUTLINE

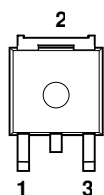


NJM2391DL1

### ■ FEATURES

- Output Current  $I_o(\text{max.})=1\text{A}$
- High Precision Output Voltage  $V_o\pm 1\%$
- Low Dropout Voltage  $\Delta V_{I-O} = 1.1\text{V typ. At } I_o=1\text{A}$
- Internal Excessive Voltage Protection Circuit
- Internal Short Circuit Current Limit
- Internal Thermal Overload Protection
- Bipolar Technology
- Package Outline TO-252

### ■ PIN CONFIGURATION



PIN FUNCTION

- 1.  $V_{IN}$
- 2. GND
- 3.  $V_{OUT}$

NJM2391DL1

### ■ ABSOLUTE MAXIMUM RATINGS

( $T_a=25^\circ\text{C}$ )

PARAMETER	SYMBOL	RATINGS	UNIT
Input Voltage	$V^+$	+10	V
Power Dissipation	$P_D$	TO-252 8 ( $T_c=25^\circ\text{C}$ ) 0.8( $T_a\leq 25^\circ\text{C}$ )	W
Operating Temperature	$T_{opr}$	-40 ~ +85	$^\circ\text{C}$
Storage Temperature	$T_{stg}$	-50 ~ +125	$^\circ\text{C}$

### ■ OUTPUT VOLTAGE RANK LIST

Device Name	$V_{OUT}$
NJM2391DL1-25	2.5V
NJM2391DL1-26	2.6V
NJM2391DL1-28	2.85V
NJM2391DL1-03	3.0V
NJM2391DL1-33	3.3V
NJM2391DL1-35	3.5V
NJM2391DL1-05	5.0V

**■ ELECTRICAL CHARACTERISTICS ( $C_{IN}=0.1\mu F$ ,  $C_o=10\mu F$ ,  $T_j=25^\circ C$ )**

Measurement is to be conducted is pulse testing

PARAMETER	SYMBOL	TEST CONDITION	MIN.	TYP.	MAX.	UNIT
Vo=2.5V Version Output Voltage	$V_O$	$V_{IN}=5.5V$ , $I_o=0.01A$	2.475	2.5	2.525	V
Line Regulation	$\Delta V_o/\Delta V_{IN}$	$V_{IN}=4V\sim 9V$ , $I_o=1A$	–	–	50	mV
Load Regulation	$\Delta V_o/\Delta I_o$	$V_{IN}=5.5V$ , $I_o=0\sim 1A$	–	–	50	mV
Quiescent Current	$I_Q$	$V_{IN}=5.5V$ , $I_o=0A$	–	2.3	4.0	mA
Ripple Rejection	RR	$V_{IN}=5.5V$ , $e_{in}=2V_{P-P}$ $f=120Hz$ , $I_o=0.5A$	53	63	–	dB
Dropout Voltage	$\Delta V_{I-O}$	$I_o=1A$	–	1.1	1.2	V
Output Noise Voltage	$V_{NO}$	$V_{IN}=5.5V$ , $I_o=0.5A$ $BW=10Hz\sim 100kHz$	–	85	185	$\mu V$
Vo=2.6V Version Output Voltage	$V_O$	$V_{IN}=5.6V$ , $I_o=0.01A$	2.574	2.60	2.626	V
Line Regulation	$\Delta V_o/\Delta V_{IN}$	$V_{IN}=4.1V\sim 9.1V$ , $I_o=1A$	–	–	52	mV
Load Regulation	$\Delta V_o/\Delta I_o$	$V_{IN}=5.6V$ , $I_o=0\sim 1A$	–	–	52	mV
Quiescent Current	$I_Q$	$V_{IN}=5.6V$ , $I_o=0A$	–	2.3	4.0	mA
Ripple Rejection	RR	$V_{IN}=5.6V$ , $e_{in}=2V_{P-P}$ $f=120Hz$ , $I_o=0.5A$	53	63	–	dB
Dropout Voltage	$\Delta V_{I-O}$	$I_o=1A$	–	1.1	1.2	V
Output Noise Voltage	$V_{NO}$	$V_{IN}=5.6V$ , $I_o=0.5A$ $BW=10Hz\sim 100kHz$	–	87	187	$\mu V$
Vo=2.85V Version Output Voltage	$V_O$	$V_{IN}=5.85V$ , $I_o=0.01A$	2.82	2.85	2.88	V
Line Regulation	$\Delta V_o/\Delta V_{IN}$	$V_{IN}=4.35V\sim 9.35V$ , $I_o=1A$	–	–	57	mV
Load Regulation	$\Delta V_o/\Delta I_o$	$V_{IN}=5.85V$ , $I_o=0\sim 1A$	–	–	57	mV
Quiescent Current	$I_Q$	$V_{IN}=5.85V$ , $I_o=0A$	–	2.3	4.0	mA
Ripple Rejection	RR	$V_{IN}=5.85V$ , $e_{in}=2V_{P-P}$ $f=120Hz$ , $I_o=0.5A$	53	63	–	dB
Dropout Voltage	$\Delta V_{I-O}$	$I_o=1A$	–	1.1	1.2	V
Output Noise Voltage	$V_{NO}$	$V_{IN}=5.85V$ , $I_o=0.5A$ $BW=10Hz\sim 100kHz$	–	90	190	$\mu V$
Vo=3V Version Output Voltage	$V_O$	$V_{IN}=6V$ , $I_o=0.01A$	2.97	3.00	3.03	V
Line Regulation	$\Delta V_o/\Delta V_{IN}$	$V_{IN}=4.5V\sim 9.5V$ , $I_o=1A$	–	–	60	mV
Load Regulation	$\Delta V_o/\Delta I_o$	$V_{IN}=6V$ , $I_o=0\sim 1A$	–	–	60	mV
Quiescent Current	$I_Q$	$V_{IN}=6V$ , $I_o=0A$	–	2.3	4.0	mA
Ripple Rejection	RR	$V_{IN}=6V$ , $e_{in}=2V_{P-P}$ $f=120Hz$ , $I_o=0.5A$	52	62	–	dB
Dropout Voltage	$\Delta V_{I-O}$	$I_o=1A$	–	1.1	1.2	V
Output Noise Voltage	$V_{NO}$	$V_{IN}=6V$ , $I_o=0.5A$ $BW=10Hz\sim 100kHz$	–	95	195	$\mu V$

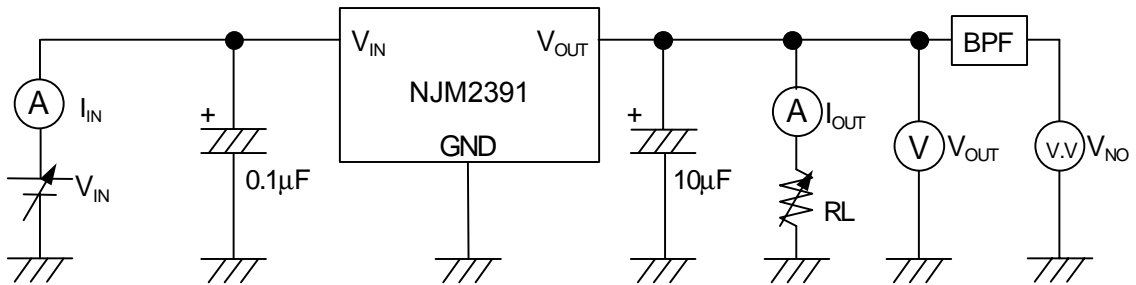
**■ ELECTRICAL CHARACTERISTICS (C<sub>IN</sub>=0.1μF, Co=10μF, T<sub>j</sub>=25°C)**

Measurement is to be conducted is pulse testing

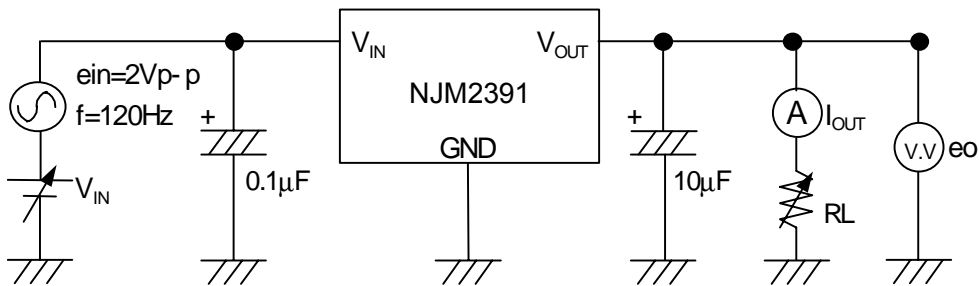
PARAMETER	SYMBOL	TEST CONDITION	MIN.	TYP.	MAX.	UNIT
Vo=3.3V Version Output Voltage	V <sub>O</sub>	V <sub>IN</sub> =6.3V, I <sub>o</sub> =0.01A	3.267	3.30	3.333	V
Line Regulation	$\Delta V_o/\Delta V_{IN}$	V <sub>IN</sub> =4.8V~9.8V, I <sub>o</sub> =1A	–	–	66	mV
Load Regulation	$\Delta V_o/\Delta I_o$	V <sub>IN</sub> =6.3V, I <sub>o</sub> =0~1A	–	–	66	mV
Quiescent Current	I <sub>Q</sub>	V <sub>IN</sub> =6.3V, I <sub>o</sub> =0A	–	2.3	4.0	mA
Ripple Rejection	RR	V <sub>IN</sub> =6.3V, e <sub>in</sub> =2V <sub>P-P</sub> f=120Hz, I <sub>o</sub> =0.5A	52	62	–	dB
Dropout Voltage	$\Delta V_{I-O}$	I <sub>o</sub> =1A	–	1.1	1.2	V
Output Noise Voltage	V <sub>NO</sub>	V <sub>IN</sub> =6.3V, I <sub>o</sub> =0.5A BW=10Hz~100kHz	–	100	200	μV
Vo=3.5V Version Output Voltage	V <sub>O</sub>	V <sub>IN</sub> =6.5V, I <sub>o</sub> =0.01A	3.465	3.50	3.535	V
Line Regulation	$\Delta V_o/\Delta V_{IN}$	V <sub>IN</sub> =5V~10V, I <sub>o</sub> =1A	–	–	70	mV
Load Regulation	$\Delta V_o/\Delta I_o$	V <sub>IN</sub> =6.5V, I <sub>o</sub> =0~1A	–	–	70	mV
Quiescent Current	I <sub>Q</sub>	V <sub>IN</sub> =6.5V, I <sub>o</sub> =0A	–	2.3	4.0	mA
Ripple Rejection	RR	V <sub>IN</sub> =6.5V, e <sub>in</sub> =2V <sub>P-P</sub> f=120Hz, I <sub>o</sub> =0.5A	52	62	–	dB
Dropout Voltage	$\Delta V_{I-O}$	I <sub>o</sub> =1A	–	1.1	1.2	V
Output Noise Voltage	V <sub>NO</sub>	V <sub>IN</sub> =6.5V, I <sub>o</sub> =0.5A BW=10Hz~100kHz	–	105	205	μV
Vo=5V Version Output Voltage	V <sub>O</sub>	V <sub>IN</sub> =8V, I <sub>o</sub> =0.01A	4.95	5.00	5.05	V
Line Regulation	$\Delta V_o/\Delta V_{IN}$	V <sub>IN</sub> =6.5V~9.5V, I <sub>o</sub> =1A	–	–	60	mV
Load Regulation	$\Delta V_o/\Delta I_o$	V <sub>IN</sub> =8V, I <sub>o</sub> =0~1A	–	–	100	mV
Quiescent Current	I <sub>Q</sub>	V <sub>IN</sub> =8V, I <sub>o</sub> =0A	–	2.3	4.0	mA
Ripple Rejection	RR	V <sub>IN</sub> =8V, e <sub>in</sub> =2V <sub>P-P</sub> f=120Hz, I <sub>o</sub> =0.5A	50	60	–	dB
Dropout Voltage	$\Delta V_{I-O}$	I <sub>o</sub> =1A	–	1.1	1.2	V
Output Noise Voltage	V <sub>NO</sub>	V <sub>IN</sub> =8V, I <sub>o</sub> =0.5A BW=10Hz~100kHz	–	150	260	μV

■ TEST CIRCUIT

- 1. Output Voltage / Line Regulation / Load Regulation
- Quiescent Current / Dropout Voltage / Output Noise Voltage

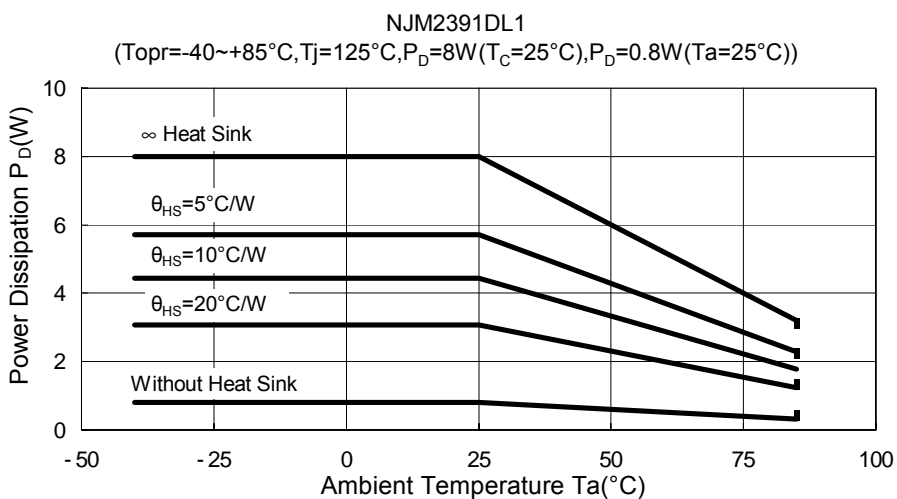


2. Ripple Rejection

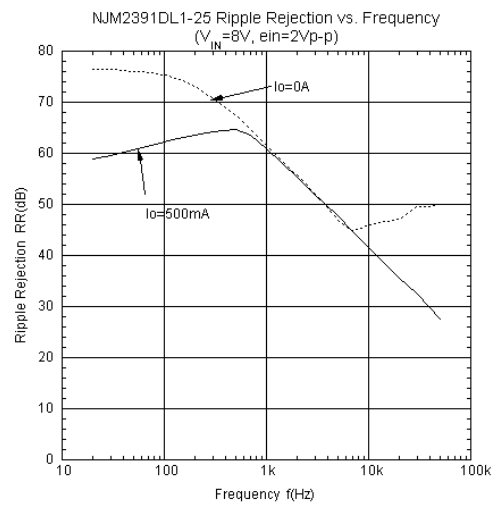
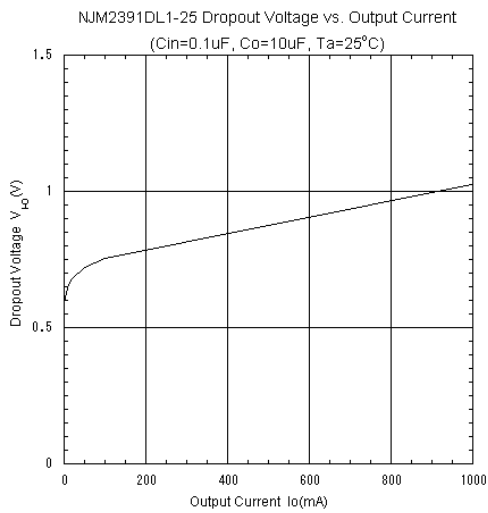
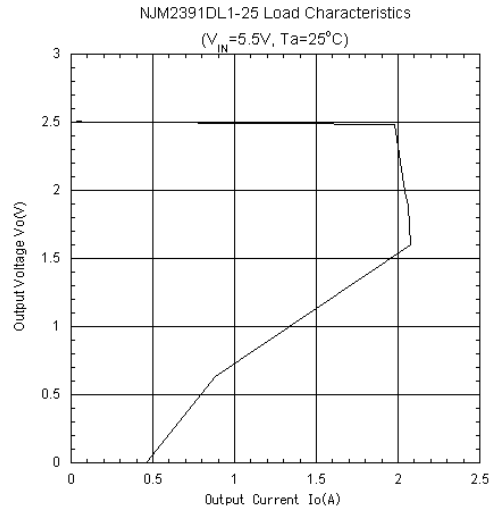
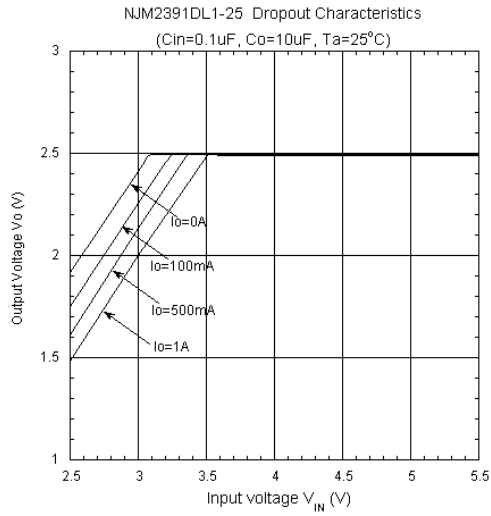


$$RR = 20 \log_{10} [e_{in}/e_o] \text{ (dB)}$$

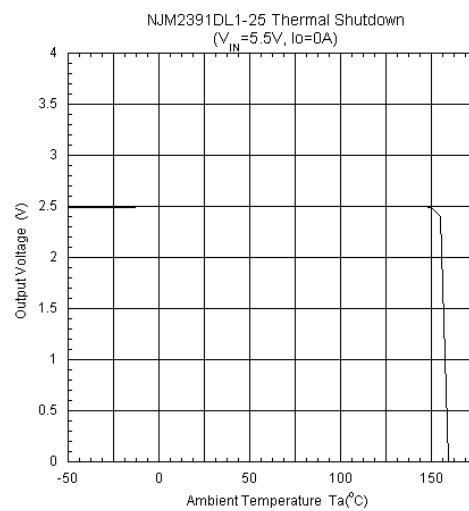
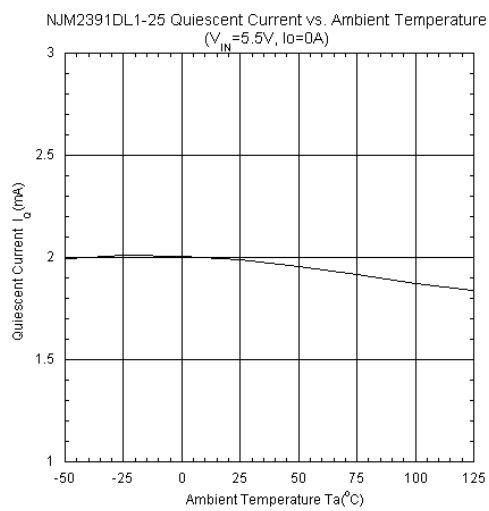
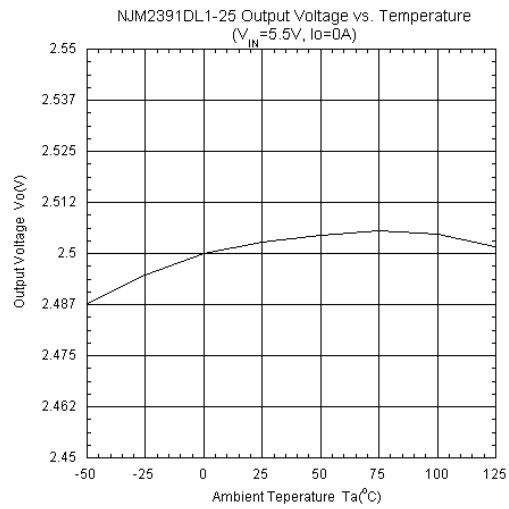
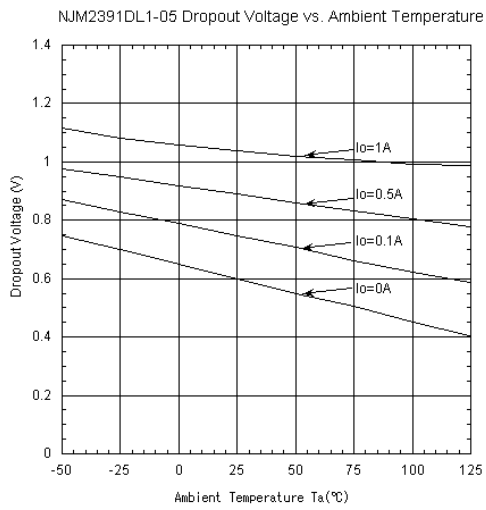
■ POWER DISSIPATION vs. AMBIENT TEMPERATURE



■ ELECTRICAL CHARACTERISTICS



## ■ ELECTRICAL CHARACTERISTICS



**[CAUTION]**

The specifications on this databook are only given for information, without any guarantee as regards either mistakes or omissions. The application circuits in this databook are described only to show representative usages of the product and not intended for the guarantee or permission of any right including the industrial rights.