



**RDL**<sup>®</sup>  
Radio Design Labs

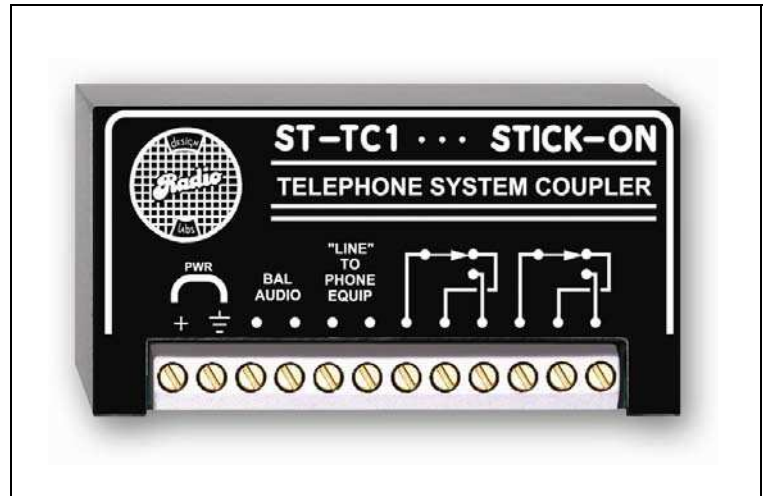
SPECIALISTS IN PRACTICAL PRECISION ENGINEERING™

## STICK-ON<sup>®</sup> SERIES Model ST-TC1 Telephone System Coupler

### ANYWHERE YOU NEED...

- To Simulate a Telco CO Line
- To Add Radio Control or Paging to KSU
- Contact Closure when Line is Selected
- Audio Input / Output from Telephone Switching Unit

### *You Need The ST-TC1!*



The ST-TC1 is part of the STICK-ON series from Radio Design Labs. The durable adhesives permit quick, permanent or removable mounting nearly anywhere or it may be used with RDL's racking accessories.

**APPLICATION:** The ST-TC1 is primarily intended to connect to an on-site telephone system switching (KSU). Connections from the ST-TC1 go into the KSU as if the ST-TC1 was an incoming phone line.

When the KSU seizes the line to the ST-TC1, a relay contact closure is provided which can be used to control a variety of equipment, such as a paging system or radio system. The closure is maintained as long as the line is seized. A 600  $\Omega$  transformer-isolated audio feed is available for audio to or from the telephone switching unit. The ST-TC1 will pass DTMF audio from a telephone keypad or other DTMF generating device.

The ST-TC1 may be utilized to add paging zones or a radio system interface to a telephone system. When any instrument in the telephone system picks up the line associated with the ST-TC1, the relay closes to activate the radio or paging function, and the audio spoken into the handset appears at the **BAL AUDIO** terminals. The ST-TC1 can not be connected to a phone line that has ringer voltage present.

The ST-TC1 can be used in conjunction with RDL's ST-VOX1 modules to provide two-way communication. The ST-VOX1 will provide the necessary push-to-talk function to key the two-way communications systems.

# STICK-ON<sup>®</sup> SERIES

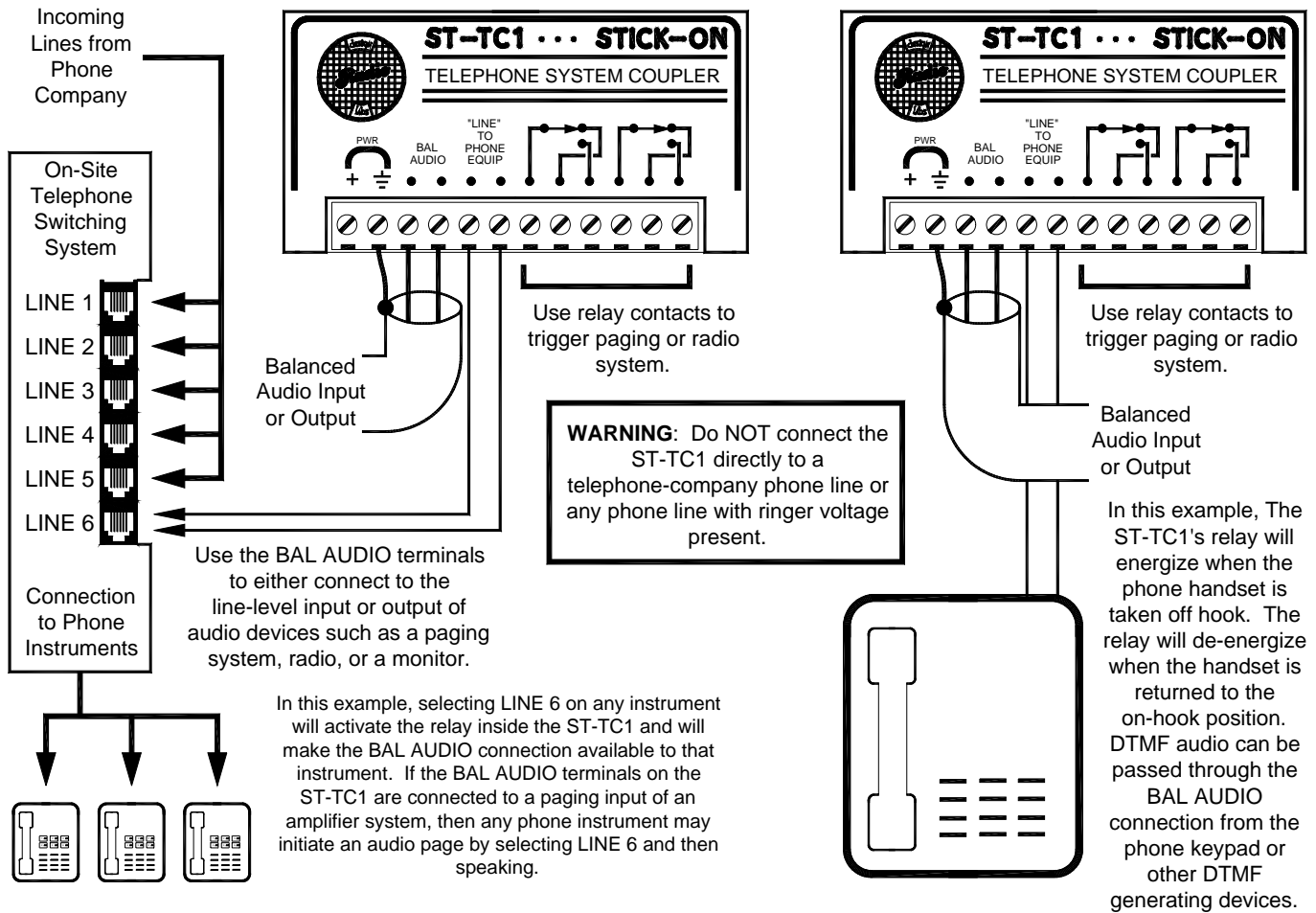
## Model ST-TC1

### Telephone System Coupler

## Installation/Operation



EN55103-1 E1-E5; EN55103-2 E1-E4  
Typical Performance reflects product at publication time exclusive of EMC data, if any, supplied with product. Specifications are subject to change without notice.



### TYPICAL PERFORMANCE

Line Connection:

Audio In/Out Impedance:

Switching Contacts:

Maximum Switching Power:

Supply Input:

Dimensions:

Simulated telco central office line to feed telephone system.

600  $\Omega$  balanced

Double-Pole, Double-Throw

60 W (220 Vdc, 125 Vac, 2 A)

24 to 33 Vdc @ 50 mA, Ground-referenced

Height: 1.55 in 3.94 cm

Width: 3.00 in 7.62 cm

Depth: 0.65 in 1.65 cm

Note:

Do not connect ST-TC1 directly to a telephone-company phone line, or any phone line that has ringer voltage present.