



## SourceFlex™ System Model SAS-HC8 Headphone Control Listening Station

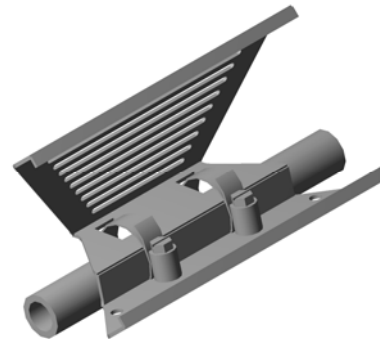
## Installation/Operation



EN55103-1 E1-E5; EN55103-2 E1-E4  
Typical Performance reflects product at publication time exclusive of EMC data, if any, supplied with product. Specifications are subject to change without notice.

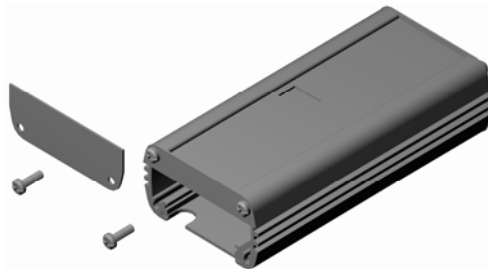


OR



Install mounting bracket to flat surface using either the screw holes or slots provided for the mounting screws.

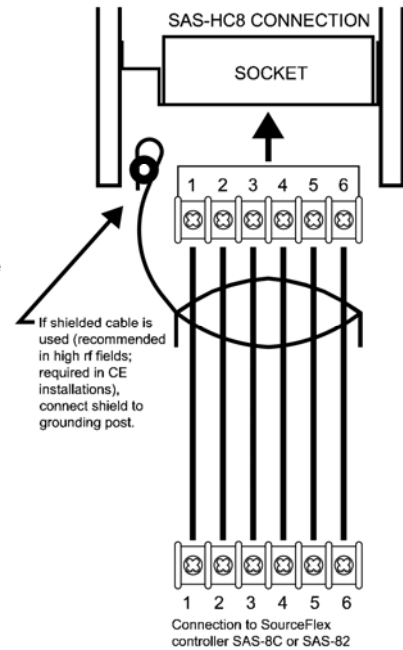
Install bracket to pipe or tubing using the smallest possible clamp provided. The clamp must be oriented as shown with the "tail" inside the bracket.



Remove the lower (larger) cover at the left end of the unit using the two screws shown. Connect the wires from the SOURCEFLEX controller as indicated in the connection diagram. Secure cover.



Secure the unit in the mounting bracket:  
•First, seat the bottom bracket in the SAS-HC8 bottom rear slot;  
•Then tilt the unit back until it snaps and locks into position.



To operate SAS-HC8: Plug in headphone, select desired source and adjust up/down level buttons for a comfortable audio level. If headphones are left unplugged 15 seconds, the volume returns to minimum to protect the next user.

### TYPICAL PERFORMANCE

Input:	6-position terminal block
Display:	7-segment red LED (0 = off or Paging; 1 through 8 = selected channel)
Control Buttons:	Replaceable, protected by moisture-resistant polycarbonate
Controls:	Momentary button channel SELECT Momentary button volume ramp UP Momentary button volume ramp DOWN
Ramp Rate:	5 seconds nominal for 40 dB audio level adjustment
Frequency Response:	50 Hz to 35 kHz (+/-1 dB)
THD+N:	< 0.1% (20 Hz to 20 kHz) @ 1 kHz
Control Signals:	dc (RAMP and CONTROL conductors between remote Listening Station and Controller)
Output Jacks (2):	1/4 in. (6.35 mm) headphone jack or 1/8 in. (mini) headphone jack
Amplified Output:	200 mW RMS into 100 Ohms, adjustable (normal system audio input operating level applied)
Mounting:	Bracket with clamps included, mounts to flat surface or to tubing 0.75 in. (1.9 cm) to 1.5 in. (3.8 cm) diameter
Finish:	RDL ULTRASTYLE™ design

NOTE: This equipment has been tested and found to comply with the limits for a Class B digital device, pursuant to part 15 of the FCC Rule. These limits are designed to provide reasonable protection against harmful interference in a residential installation. The equipment generates, uses and can radiate radio frequency energy and, if not installed and used in accordance with the instructions, may cause harmful interference to radio communications. However, there is no guarantee that interference will not occur in a particular installation. If this equipment does cause harmful interference to radio or television reception, which can be determined by turning the equipment off on, the user is encouraged to try to correct the interference by one or more of the following measures:

- Reorient or relocate the receiving antenna
- Increase the separation between the equipment and receiver
- Connect the equipment into an outlet on a circuit different from that which the receiver is connected.
- Consult the dealer or an experienced radio/TV technician for help.