



**RDL**<sup>®</sup>  
Radio Design Labs

SPECIALISTS IN PRACTICAL PRECISION ENGINEERING™

## ACCESSORIES

### Model RCX-A2, D SERIES-A2 Audio Output Panel

The -A2 audio panels are audio output accessories from Radio Design Labs offered in Decora® plates and in RDL *ULTRASTYLE* design. The RCX- panels are finished in two coordinated neutral colors to complement the broad range of decor encountered in commercial environments. The D SERIES panels are finished in RDL's grey/white color, black or in stainless steel. These output panels are intended for installations demanding the ultimate in professional styling combined with durability, longevity and value.



- Wall Mounted Consumer Level Outputs
- Single or Dual Outputs from Mono Source
- Gold Plated Phono Jack Outputs
- Transformer Isolation from Source
- Audio Outputs from any RDL Line Output
- High Attenuation of Reverse Signals

#### APPLICATION:

The -A2 is a passive audio output assembly that provides one or two unbalanced consumer level audio outputs from a balanced line level audio source. It may be connected to the +4 dBu line level output of any RDL product, even if that output is simultaneously feeding other equipment. The -A2 circuit design provides a high degree of audio isolation if a user accidentally feeds a consumer-level source into the -A2. The attenuation of such reverse signals is sufficient for most installations. Active RDL modules are available for complete isolation if required. The -A2 output jacks are transformer isolated from the balanced line input, and the input shield is separated from the case ground to reduce the possibility of induced hum. The -A2 is not intended as an audio input panel.

The -A2 fits directly into back boxes, available from RDL, to fit cabinets, US or European walls (RDL WB-1U). It may also be mounted directly into cabinets or most standard US single gang electrical boxes.

Wherever style, performance, and value are required for wall or cabinet mounted audio outputs, the -A2 is the ideal choice. Use them individually or in conjunction with other RDL products as part of a complete audio/video system.

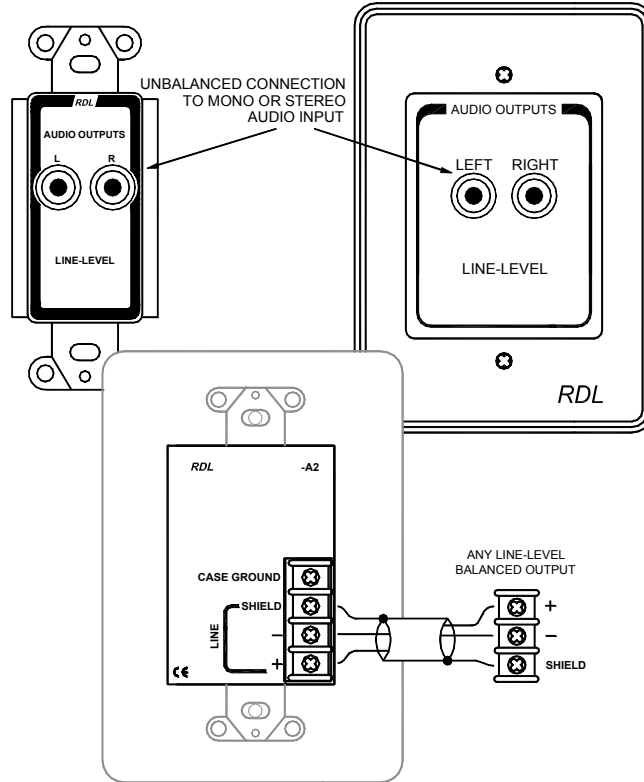
# ACCESSORIES

## Model RCX-A2, D SERIES-A2 Audio Output Panel

## Installation/Operation



EN55103-1 E1-E5; EN55103-2 E1-E4  
Typical Performance reflects product at publication time  
exclusive of EMC data, if any, supplied with product.  
Specifications are subject to change without notice.



### TYPICAL PERFORMANCE

Input Level:	+4 dBu, nominal
Input Connector:	Full size barrier block
Input Impedance:	10 k $\Omega$ balanced bridging, monaural
Output Connectors (2):	Phono jacks with gold contacts
Input Connections (4):	<b>CASE GROUND, SHIELD, +, -</b>
Frequency Response:	50 Hz to 20 kHz (+/- 1 dB)
Attenuated Signal – Reverse Path:	< -50 dB (at 150 $\Omega$ balanced source output, +4 dBu reference, -10 dBV signal injected into output jack)
Power Requirement:	Passive

Overall Dimensions RCX-A2:	Height:	4.88 in.	12.40 cm
	Width:	3.39 in.	8.61 cm
	Depth:	1.29 in.	3.28 cm

Overall Dimensions D SERIES-A2:	Height:	4.13 in.	10.49 cm
	Width:	1.7 in.	4.32 cm
	Depth:	1.75 in.	4.45 cm