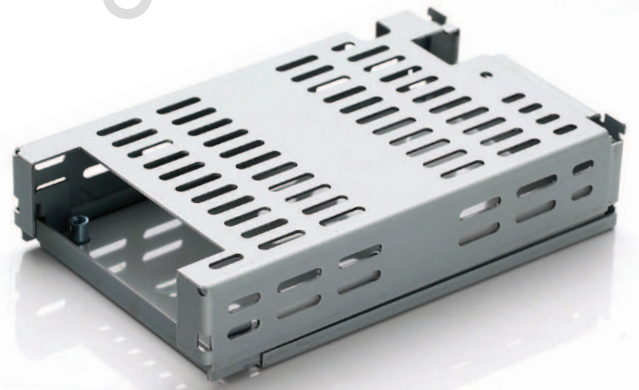


Features

- Noncorrosive
- Easy assembly
- Low weight
- Fully safe



FOR VLT80, VLT100, VLT110, VLT130, VLT150, MVL80, MVL100 & MVL110 SERIES

Derating Guidelines

VLT80/MVL80: Ambient > 40°C, derate by 1.3 W/°C to 50°C. 5 CFM recommended to circulate air

VLT100/MVL100: It is not recommended to operate with Ambient > 40°C. 5 CFM recommended to circulate air

VLT110/MVL110: It is not recommended to operate with Ambient > 40°C. 5 CFM recommended to circulate air

VLT130/VLT150: Ambient > 30°C, derate by 1.3 W/°C to 40°C. 25 CFM recommended to circulate air

Contents

Mounting Base, Cover, Insulator, Fixing Screws

Mechanical Dimensions

Cover and Base Material EG (Zintec) / CRC (Powder coating/Passivation), 1.0 mm

Marked A: PCB MTG; B: COVER MTG; C: SYSTEM MTG

All dimensions are in mm. General tolerance : +/-0.5

Mechanical Drawing

