

PXIS-2719A

19-Slot 3U PXI Chassis with AC



Introduction

The ADLINK PXIS-2719A is a 3U PXI chassis with advanced features, including:

- Innovative cooling solution, delivering efficient and uniform heat dissipation
- Superior stability within an extended temperature range
- Intelligent chassis management providing dynamic monitoring and management of fan speed, system voltage, and internal temperature
- Remote management via standard RS-232 monitoring port

The PXIS-2719A is compliant with PXI and CompactPCI specifications and provides one system slot and eighteen peripheral slots. It is designed to meet or exceed application requirements with maximum slot capacity, extended operating temperature range, and superior heat dissipation in a lightweight and robust design.

The PXIS-2719A includes an Industrial-grade 600 W AC power supply to provide ample reliable power to the entire system. The PXIS-2719A is designed with an external 10 MHz reference clock input, front panel LED indicators, and easy-access PXI/CompactPCI slots with card guides for convenient installation and use. With innovative features and robust design, the PXIS-2719A is a clear leader for PXI platform-based test and measurement applications.

Features

- PXI Hardware Specification Rev. 2.2 compliant
- Rack-mountable 19-slot PXI chassis with one system slot and eighteen PXI/CompactPCI peripheral slots
- Advanced forced-cooling mechanism for efficient and uniform heat dissipation
- External 10 MHz reference clock input via BNC connector
- 0°C to 55°C extended operating temperature range
- Intelligent chassis monitoring/control
 - Automatic fan speed control
 - Chassis status monitoring and exporting
 - Remote chassis power on/off control
- 600 W industrial-grade AC power supply
- Power, temperature and fan monitoring LEDs

Highlights

■ Innovative Cooling Mechanism

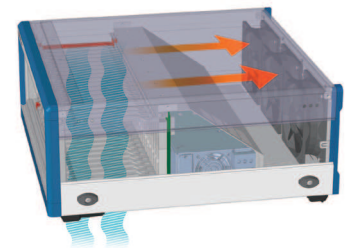
The ADLINK PXIS-2719A features an innovative design for heat dissipation. The cooling fans are placed in the rear section of the chassis where cool air is drawn in through apertures on the bottom and exhausted through the back. This new design provides uniform airflow for each PXI slot and exceptional cooling capability. When the chassis is installed, the design minimizes intake of hot air from the rear where other devices exhaust, while maintaining a steady temperature inside the chassis.

■ Intelligent Chassis Management

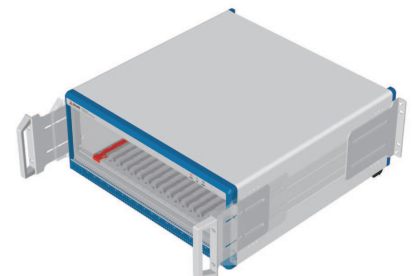
The PXIS-2719A has a built-in control board monitors and manages chassis status, including internal temperature, fan speed, and voltages. Using the RS-232 monitoring port, the chassis status information can be exported to another computer for remote management. The control board can also accept commands from the remote system to allow remote power on/off and fan speed control of the PXIS-2719A chassis.

■ Flexible Rack-mount Design

An optional rack-mount kit provides flexible installation of the PXIS-2719A. By adjusting the position of rack-mount bracket, the PXIS-2719A can be recessed in a cabinet rack up to 10 centimeters to accommodate external mechanical parts on the front side, such as complicated connectors/wires and mass interconnect modules.



Remote Monitoring Port



Specifications

Power Supply

- AC Input
 - Input voltage range: 85 to 264 VAC full range
 - Input voltage frequency: 47 to 63 Hz
- DC Output
 - Maximum total usable power is 600 W

VDC	Maximum	Load Regulation	Maximum Ripple & Noise
+5 V	45.0 A	±3%	20 mV
+12 V	15.0 A	±3%	50 mV
+3.3 V	42.0 A	±3%	20 mV
-12 V*	4.75 A	±3%	50 mV

Cooling

- Fans: 3 sets of 185.9 CFM fans
- Per-slot cooling capacity: 25 W (verified by 55°C chamber test)

Physical

- Number of slots: 19 (1 system slot + 18 peripheral slots)
- Dimensions: 444 mm (W) x 178 mm (H) x 455 mm (D) (17.3" x 6.9" x 17.7")
- Weight: 13.4 kg (29.5 lbs)

Operating Environment

- Ambient temperature: 0°C to 55°C (32°F to 131°F)
- Relative humidity: 10% to 90%, non-condensing

Storage Environment

- Ambient temperature: -20°C to 70°C (-4°F to 158°F)
- Relative humidity: 10% to 90%, non-condensing

Shock and Vibration

- Functional shock: 30 G, half-sine, 11 ms pulse duration
- Random Vibration
 - Operating: 5 to 500 Hz, 0.31 GRMS, 3 axes
 - Non-operating: 5 to 500 Hz, 2.46 GRMS, 3 axes

Emissions Compliance

- EN 61326-1
- FCC Class A

CE Compliance

- Safety: EN 61010-1
- Immunity: EN 61326-1

Recommended System Controller

PXI-3980/3950/3920	PXIS-2719A
	√

Ordering Information

- **PXIS-2719A**
3U 19-Slot Smart PXI Chassis with 600 W AC Power Supply
- **PXIS-2719A Rack-mount Kit**
Flexible Rack-mount Kit for PXIS-2719A