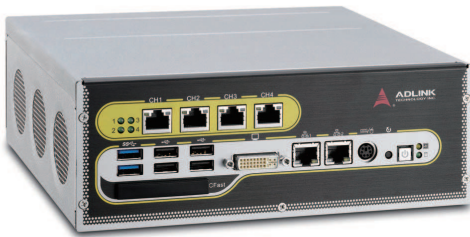


# EOS-I200

Powerful 4-CH Gigabit PoE Embedded Vision System with 2nd/3rd Generation Intel® Core™ i5/i7 Processor



**GiGE**  
VISION

## Introduction

ADLINK's EOS-I200 is a rugged and compact embedded vision system equipped with the 2nd/3rd Generation Intel® Core™ i5/i7 processor. Four independent PoE (power over Ethernet) ports with data transfer rates up to 4.0 Gb/s offer greatly enhanced computing power and connectivity with minimal footprint.

The EOS-I200 supports not only PoE (power over Ethernet), combining power and signal supply into a single cable, but also IEEE 1588 (precise time protocol), enabling synchronization with multicamera acquisition. With the EOS-I200's significant cable reduction system installation is simplified, and maintenance burdens and total cost of ownership are notably lowered.

The EOS-I200 supports a rich I/O capability, including four serial ports, two USB 3.0 ports, 32 PNP/NPN isolated digital I/Os, dual storage, an internal USB port, and 1 Kbit programmable EEPROM, which make EOS-I200 ideal to integrate, deploy, and manage copy protection or authentication of software licenses for system development, and further accelerate time to market.

Combining more powerful computing with multi-channel connectivity and a ready-to-deploy application platform, the EOS-I200 delivers embedded vision ideally suited to machine vision applications.

## Features

- Compact and rugged system design
- Embedded Intel® Core i5/i7 Quad Core CPU
- Up to 4-CH Gigabit PoE (power over Ethernet), 4.0 Gb/s
- Support for IEEE 1588, PTP technology
- Support for two USB 3.0 ports
- Support for wall and DIN rail mounting (optional)
- One internal USB port and 1Kbit EEPROM
- RAID system (Dual SATA interface)
- 32 PNP/NPN isolated digital I/O

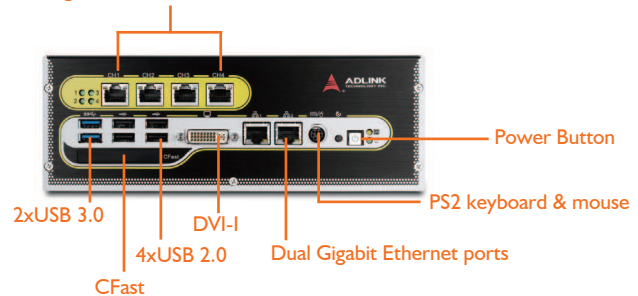
## Applications

- Industrial automation
- Robot guidance
- 3D vision
- Medical imaging

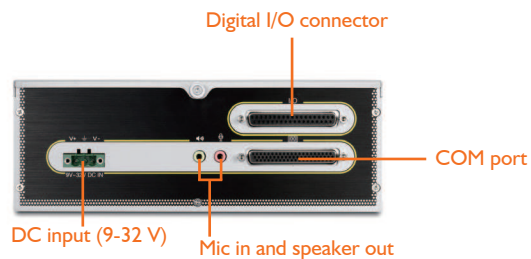
## Software Support

- OS Information
  - Windows® 8/7/XP/XP Embedded/Embedded Standard 7

### Four Gigabit Power over Ethernet connectors



EOS-I200 Front View



EOS-I200 Back View

## Specifications

■ CPU	Intel® Core™ i5-2510 3.1 GHz / Intel® Core™ i7-2710 3.0 GHz / Intel® Core™ i7-3610 3.3 GHz
■ System Memory	Up to 8 GB DDR3
■ Camera Interface	4-CH Gigabit power over Ethernet IEEE 802.3af compliant, total max. power output 32 W
■ Chipset	Intel® QM67 Express chipsets
■ VGA	VGA+DVI-D output by DVI-I connector, up to QXGA (2048 x 1536) resolution
■ USB	Four USB 2.0 ports, two USB 3.0 ports
■ Audio	AC97, mic in/speaker out
■ COM Ports	Two software-programmable RS-232/422/485 (COM1 & COM2), two RS-232 (COM3 & COM4)
■ Digital I/O (Option)	16-CH isolated digital input and output, PNP/NPN type
■ Keyboard/Mouse	PS/2 type mini-DIN connectors
■ Power Supply	DC: 10 to 30 Vdc, ATX mode
■ Operating Temp.	0°C to +55°C (32°F to 131°F)
■ Humidity	0% to 90%
■ Dimensions	230 (W) x 206 (D) x 82 (H) mm (9" x 8.3" x 3.2")
■ Power Consumption	110 W (with 4 GB DDRAM and 4 GB CFAST)
■ Storage	One CFAST slot, two 2.5" SATA interfaces
■ Random Vibration	Operating, 5 Grms, 5-500 Hz, 3 axes (w/CFAST)
■ Safety compliance	CE/FCC, RoHS

## Ordering Information

- **EOS-1220/M4G**  
4-CH Gigabit PoE embedded vision system equipped with 3rd generation Intel® Core™ i7-3610 3.3 GHz quad core processor and 4 GB RAM
- **EOS-1200/M4G**  
4-CH Gigabit PoE embedded vision system equipped with 2nd generation Intel® Core™ i7-2710 3.0 GHz quad core processor and 4 GB RAM
- **EOS-1200/M4G/HDD320G**  
4-CH Gigabit PoE embedded vision system equipped with 2nd generation Intel® Core™ i7-2710 3.0 GHz quad core processor, 4 GB RAM, and 320 G HDD
- **EOS-1210/M2G**  
4-CH Gigabit PoE embedded vision system equipped with 2nd generation Intel® Core™ i5-2510 3.1 GHz dual core processor and 2 GB RAM
- **EOS-1210/M2G/HDD320G**  
4-CH Gigabit PoE embedded vision system equipped with 2nd generation Intel® Core™ i5-2510 3.1 GHz dual core processor, 2 GB RAM, and 320 G HDD

## Optional Accessories

- **32 GB SSD option**  
Factory-installation of 32 GB SATA solid state drive
- **4 GB CFAST option**  
Factory-installed 4 GB CFAST card
- **150 W AC adapter**  
150 W industrial-grade AC adapter
- **DIN rail kit**  
DIN rail mount kit

### Cabling

- **COM port cable**  
DSUB 62-pin male to 4 DSUB 9-pin male cable