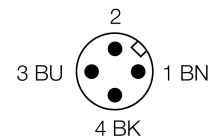
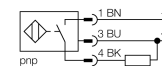


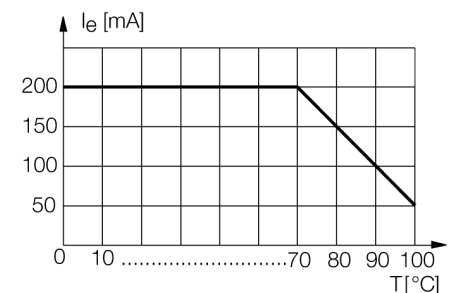
- Threaded barrel, M30 x 1.5
- Stainless steel, 1.4404
- Front cap made of liquid crystal polymer Vectra
- Factor 1 for all metals
- Magnetic field immune
- For temperatures of - 40 °C to +100 °C
- High protection class IP69K, for harsh environments
- Special double-lip seal
- Protection against all common acid and alkaline cleaning agents
- Laser engraved label, permanently legible
- DC 3-wire, 10...30 VDC
- NO contact, PNP output
- M12 x 1 connector

Wiring diagram



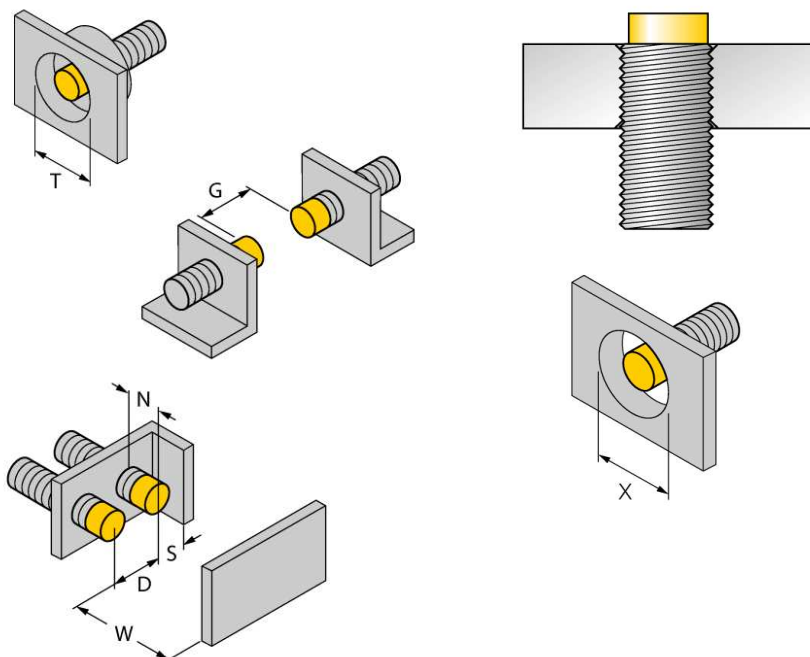
Functional principle

The inductive sensors for the food industry are absolutely watertight and resistant to cleaning agents and disinfectants. The requirements of the protection classes IP68 and IP69K are well exceeded by our uprox®+ sensors. The sensors are well protected by an LCP front cap and a stainless steel housing.



| | |
|---|---|
| Type code | NI30U-EM30WD-AP6X-H1141 |
| Ident no. | 1634822 |
| Rated operating distance Sn | 30 mm |
| Mounting condition | non-flush |
| Assured sensing range | ≤ (0,81 x Sn) mm |
| Repeatability | ≤ 2 % of full scale |
| Temperaturdrift | 10 % |
| Hysteresis | ≤ ± 20 %, ≤ -25 °C , ≥ +70 °C |
| Ambient temperature | 3...15 % -40...+100 °C |
| Operating voltage | 10...30VDC |
| Residual ripple | ≤ 10 % U _{ss} |
| DC rated operational current | ≤ 200 mA |
| No-load current I ₀ | ≤ 15 mA |
| Residual current | ≤ 0.1 mA |
| Rated insulation voltage | ≤ 0.5 kV |
| Short-circuit protection | yes/ cyclic |
| Voltage drop at I ₀ | ≤ 1.8 V |
| Wire breakage / Reverse polarity protection | yes/ complete |
| Output function | 3-wire, NO contact, PNP |
| Protection class | ☐ |
| Switching frequency | 0.5 kHz |
| Design | threaded barrel, M30 x 1.5 |
| Dimensions | 62 mm |
| Housing material | Metal, V4A (1.4404) |
| Material active face | Plastic, LCP |
| Connector housing | plastic, PP |
| Admissible pressure on front cap | ≤ 10 bar |
| Max. tightening torque housing nut | 75 Nm |
| Connection | male, M12 x 1 |
| Vibration resistance | 55 Hz (1 mm) |
| Shock resistance | 30 g (11 ms) |
| Protection class | IP68 / IP69K |
| MTTF | 874 years acc. to SN 29500 (Ed. 99) 40 °C |
| Switching state | ● yellow |

| | |
|-------------------------------|---------|
| Distance D | 135 mm |
| Distance W | 90 mm |
| Distance T | 90 mm |
| Distance S | 45 mm |
| Distance G | 180 mm |
| Distance N | 30 mm |
| <hr/> | |
| Diameter of the active area B | Ø 30 mm |



All non-flush mountable *uprox*®+ threaded barrel sensors can be screwed to the upper edge of the barrel. Thus safe operation is guaranteed with a reduced switching distance of max. 20 %.

When installed in an aperture plate a distance of X = 140 mm must be observed.

Accessories

| Type code | Ident no. | Description | Dimension drawing |
|-----------|-----------|--|-------------------|
| MW-30 | 6945005 | Mounting bracket for threaded barrel devices; material: Stainless steel A2 1.4301 (AISI 304) | |
| BSS-30 | 6901319 | Mounting bracket for smooth and threaded barrel devices; material: Polypropylene | |

Wiring accessories

| Type code | Ident no. | Description | Dimension drawing |
|-------------|-----------|--|-------------------|
| RKC4T-2/TEL | 6625010 | Connection cable, female M12, straight, 3-pin, cable length: 2 m, sheath material: PVC, black; cULus approval; other cable lengths and qualities available, see www.turck.com | |