



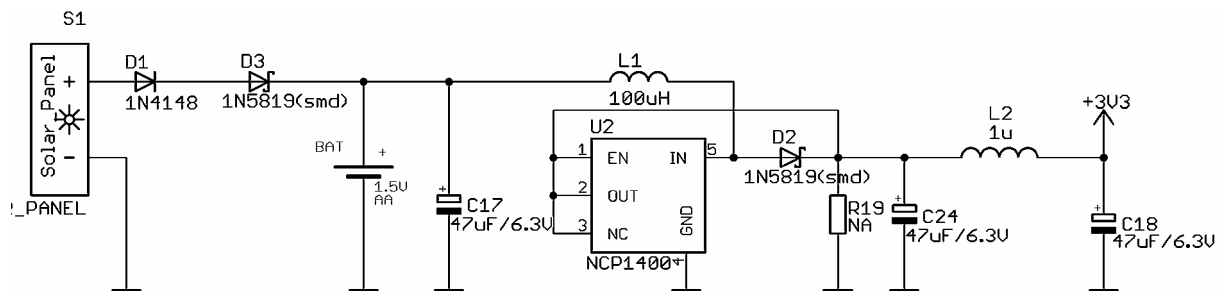
MSP430-SOLAR is power supply module with solar panel and re-chargeable battery. The solar panel is rated 2.4V 80mA and have on board DC/DC voltage boost converter which generates 3.3V for the MSP430 target.

The board have female 2x7 IDC keyed connector which can be plug-in into the standard MSP430 JTAG connector to provide the power supply to target MSP430 board.

The module features are:

- **Solar panel** with 2.4V DC / 80 mA power supply (under direct sun lighting on it with 90 degree to sun rays)
- **Battery holder** for 1.2V single cell re-chargeable battery
- DC/DC voltage boost converter 1.2 VDC to 3.3VDC
- Female IDC connector for direct plug to MSP430 target boards with JTAG connector
- Dimensions: 56x48 mm (2.2x1.9")

Schematic:



COPYRIGHT (C) 2006, OLIMEX LTD.
[HTTP://WWW.OLIMEX.COM/DEV](http://www.olimex.com/dev)

