



FEATURES:

- Suitable for RoHS reflow profile
- High current rating and low DCR
- Special lead wire design to prevent open circuit failure
- Excellent terminal strength to mechanical stress

APPLICATIONS:

- OA equipments
- PC and notebook
- LCD TV set
- Power supply

ELECTRICAL SPECIFICATIONS:

| | |
|------------------------|------------------|
| Abracon P/N: | ASPI-0705 Series |
| Operating Temperature: | -40°C to +85°C |
| Storage Temperature: | +5°C to +40°C |

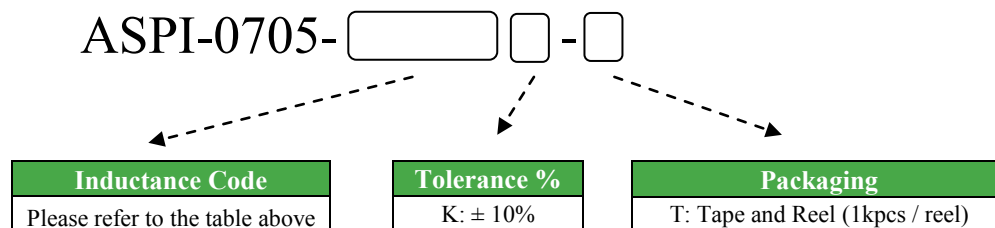
| PART NUMBER | INDUCTANCE (uH) | Tolerance | DCR (Ω) max | IDC (A) max | Inductance Code |
|---------------|-----------------|-----------|-------------|-------------|-----------------|
| ASPI-0705-100 | 10 | K | 0.07 | 2.30 | 100 |
| ASPI-0705-120 | 12 | K | 0.08 | 2.00 | 120 |
| ASPI-0705-150 | 15 | K | 0.09 | 1.80 | 150 |
| ASPI-0705-180 | 18 | K | 0.10 | 1.60 | 180 |
| ASPI-0705-220 | 22 | K | 0.11 | 1.50 | 220 |
| ASPI-0705-270 | 27 | K | 0.12 | 1.30 | 270 |
| ASPI-0705-330 | 33 | K | 0.13 | 1.20 | 330 |
| ASPI-0705-390 | 39 | K | 0.16 | 1.10 | 390 |
| ASPI-0705-470 | 47 | K | 0.18 | 1.10 | 470 |
| ASPI-0705-560 | 56 | K | 0.24 | 0.94 | 560 |
| ASPI-0705-680 | 68 | K | 0.28 | 0.85 | 680 |
| ASPI-0705-820 | 82 | K | 0.37 | 0.78 | 820 |
| ASPI-0705-101 | 100 | K | 0.43 | 0.72 | 101 |
| ASPI-0705-121 | 120 | K | 0.47 | 0.66 | 121 |
| ASPI-0705-151 | 150 | K | 0.64 | 0.58 | 151 |
| ASPI-0705-181 | 180 | K | 0.71 | 0.51 | 181 |
| ASPI-0705-221 | 220 | K | 0.96 | 0.49 | 221 |
| ASPI-0705-271 | 270 | K | 1.11 | 0.42 | 271 |
| ASPI-0705-331 | 330 | K | 1.26 | 0.40 | 331 |
| ASPI-0705-391 | 390 | K | 1.77 | 0.36 | 391 |
| ASPI-0705-471 | 470 | K | 1.96 | 0.34 | 471 |

Test Conditions

Inductance: 2.52MHz for 10μH ~ 82μH; 1kHz for 100μH ~ 470μH

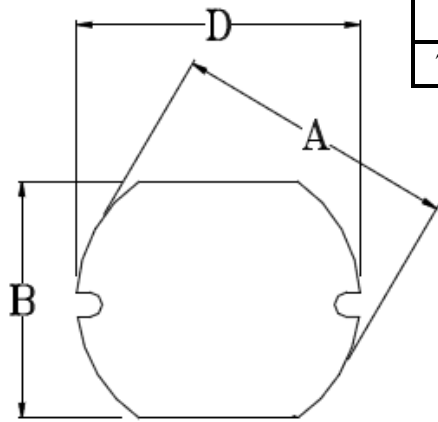
Isat: ΔL/L (initial) ≥ -10% or ΔT=40°C (Ta=20°C), whichever is lower.

OPTIONS AND PART IDENTIFICATION

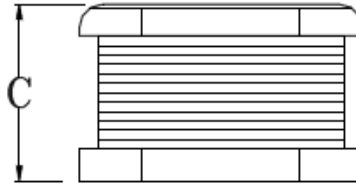




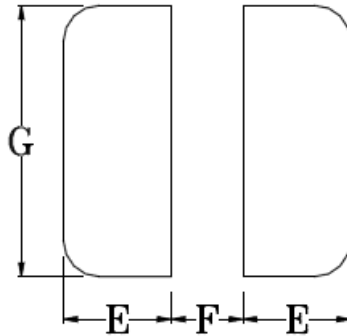
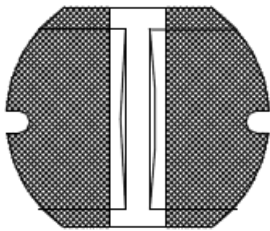
OUTLINE DRAWING:



| A | B | C | D | E | F | G |
|---------|---------|----------|---------|------|------|------|
| 7.8±0.3 | 7.0±0.3 | 5.0±0.50 | 7.8±0.3 | 3.00 | 2.00 | 7.50 |

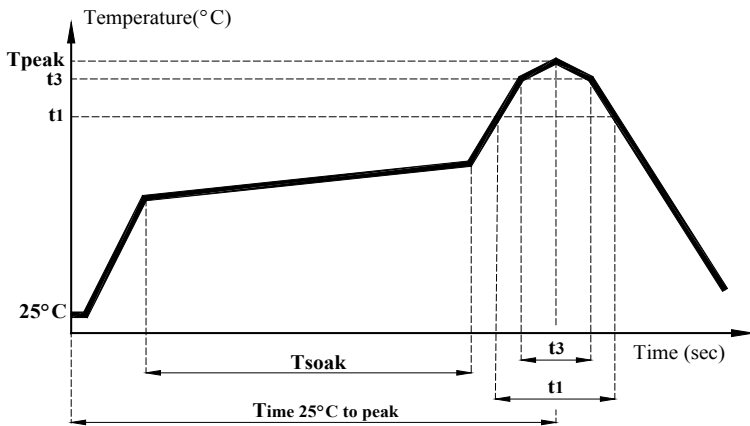


Recommended Land Pattern



Dimension: mm

REFLOW PROFILE:

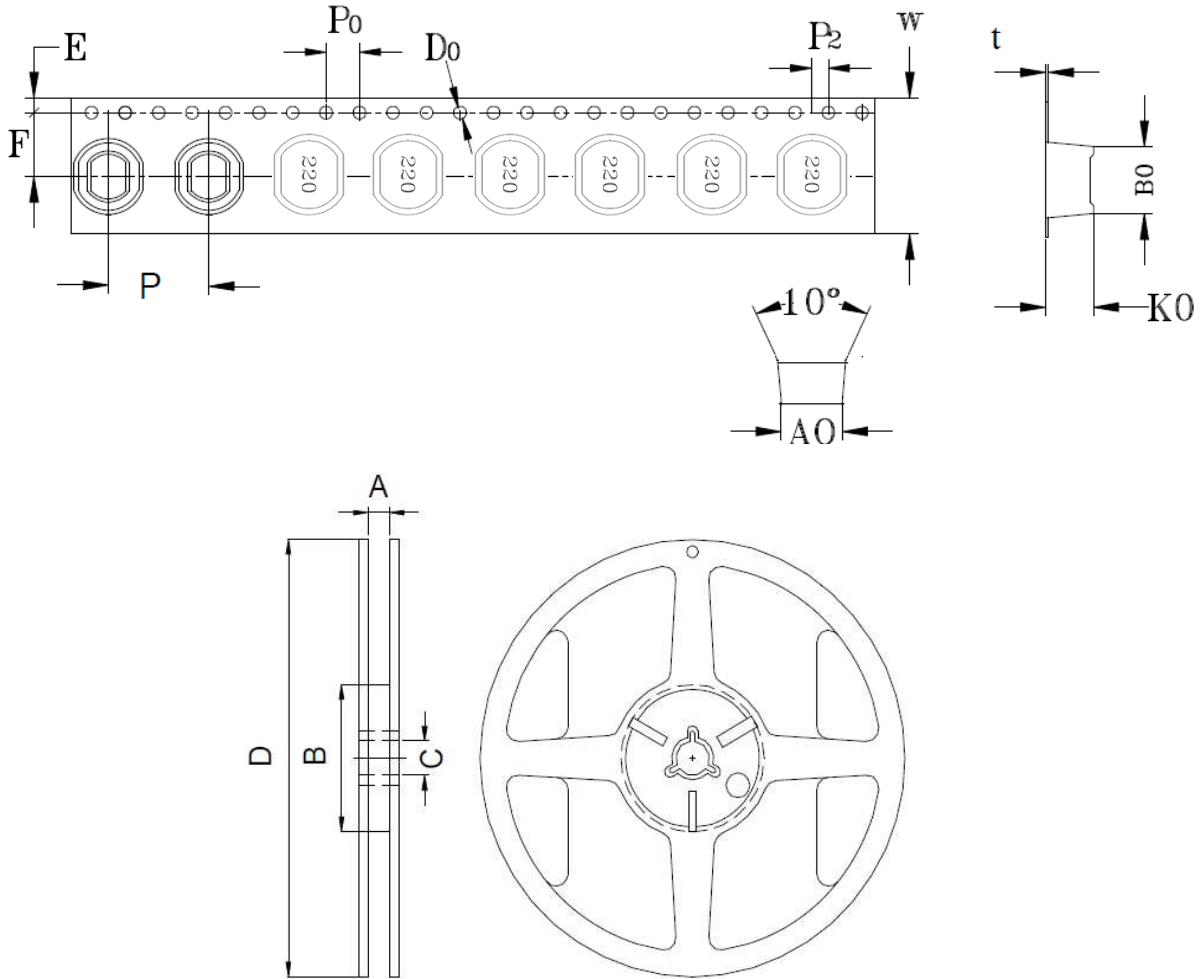


| Item | mark | |
|--|-------|------------------|
| Temperature rise gradient | | 3°C/sec (max) |
| Heating time | Tsoak | 50s ~ 150s |
| Heating temperature | | 120°C~180°C |
| Time over 217°C | t1 | 70 sec |
| Time within 5°C of actual peak temperature | t3 | 10~30 sec |
| Peak temperature | Tpeak | 250 (+0 / -5 °C) |
| Time 25°C to peak Temperature | | 6 minutes max. |



TAPE & REEL:

T: 1,000pcs / reel



| CARRIER TAPE / SIZE (mm) | | | | | | | | | | REEL 13"×24mm | | | |
|--------------------------|-----------|------------|-----------|------------|----------|----------|---------|---------|------------|---------------|-----------|------------|-----------|
| A0 | B0 | K0 | F | E | W | P | Po | P2 | t | A | B | C | D |
| 7.2 ± 0.1 | 8.1 ± 0.1 | 5.35 ± 0.1 | 7.5 ± 0.1 | 1.75 ± 0.1 | 16 ± 0.3 | 12 ± 0.1 | 4 ± 0.1 | 2 ± 0.1 | 0.4 ± 0.05 | 16.5 ± 0.2 | 100 ± 0.5 | 13.2 ± 0.3 | 330 ± 1.0 |

Dimension: mm

ATTENTION Abracon Corporation's products are COTS – Commercial-Off-The-Shelf products; suitable for Commercial, Industrial and, where designated, Automotive Applications. Abracon's products are not specifically designed for Military, Aviation, Aerospace, Life-dependant Medical applications or any application requiring high reliability where component failure could result in loss of life and/or property. For applications requiring high reliability and/or presenting an extreme operating environment, written consent and authorization from Abracon Corporation is required. Please contact Abracon Corporation for more information.