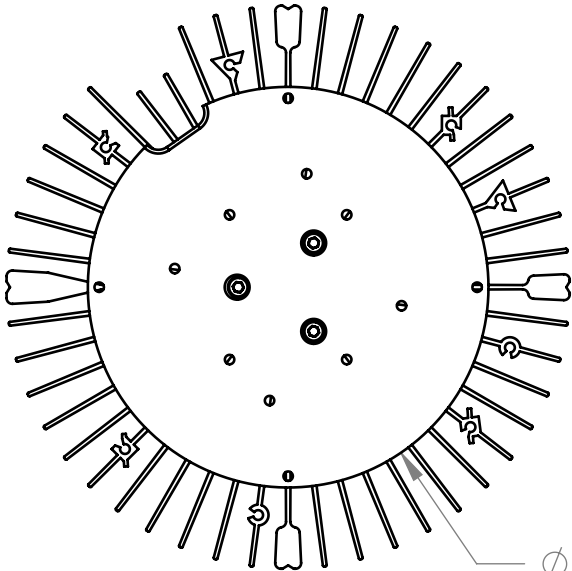
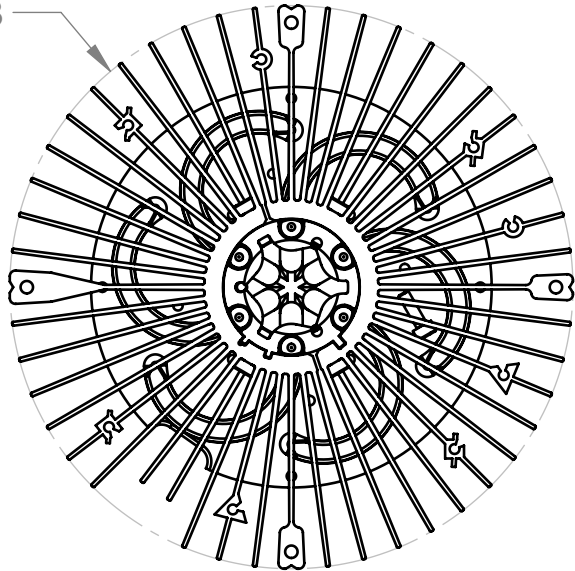


- NOTES:
1. MATERIAL: ALUMINUM AND COPPER
 2. BASE: NICKEL PLATED
FINS: TBD
 3. THE PART NUMBER, REVISION, AND DATE ARE MARKED IN THE AREA SHOWN.

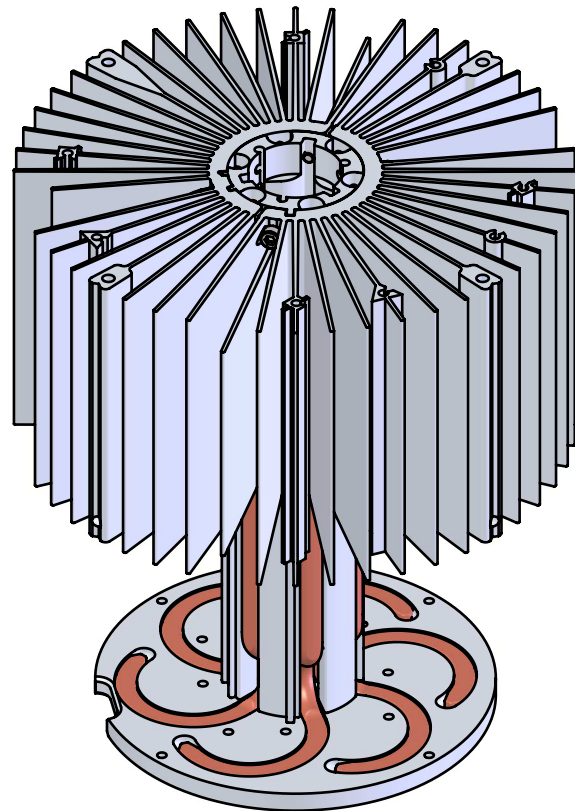
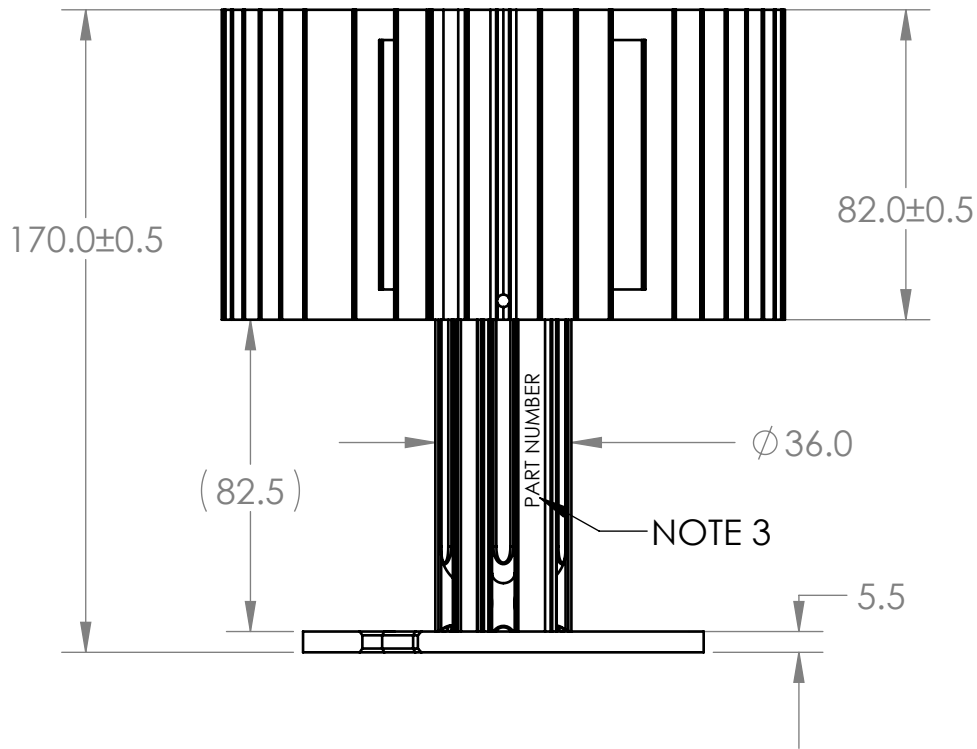
TABLE 1		
MARKETING PART NUMBER	MANUFACTURING/ENGINEERING PART NUMBER	LED MODULES SUPPORTED
NX302105	090-00289-02	BRIDGELUX RS (HOLE A) BRIDGELUX BXRA-5 (HOLE B)

REV	DESCRIPTION	BY	APR	DATE
X01	INITIAL RELEASE FOR DDR	ASP		2012-09-17

Ø 149.0±0.8



Ø 106.0



UNLESS OTHERWISE SPECIFIED:

- ALL DIMENSIONS IN MILLIMETERS
- DRAFT ANGLES TO BE 3 DEGREES
- DIMENSIONS INCLUDE PLATING

TOLERANCES: .X: ± 0.2
.XX: ± 0.1
ANGLES: ±0.5°

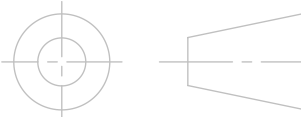
MATERIAL N/A

FINISH N/A

DO NOT SCALE DRAWING

DRAWN ASP 2012-9-17
CHECKED A
ENG APPR. A

THIRD ANGLE
PROJECTION



TITLE:
Heat Sink Assembly,
High Bay 150W

DWG. NO.
NX302105

SCALE: 1:2

SHEET 1 OF 4

REV
X01

PROPRIETARY AND CONFIDENTIAL: THE INFORMATION CONTAINED IN THIS DRAWING IS THE SOLE PROPERTY OF NUVENTIX, INC. ANY REPRODUCTION IN PART OR AS A WHOLE WITHOUT THE WRITTEN PERMISSION OF NUVENTIX, INC IS PROHIBITED.

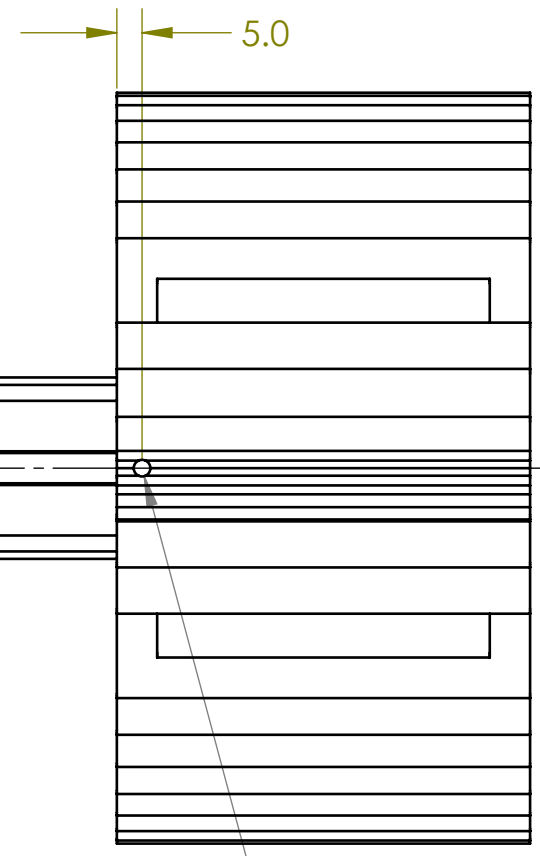
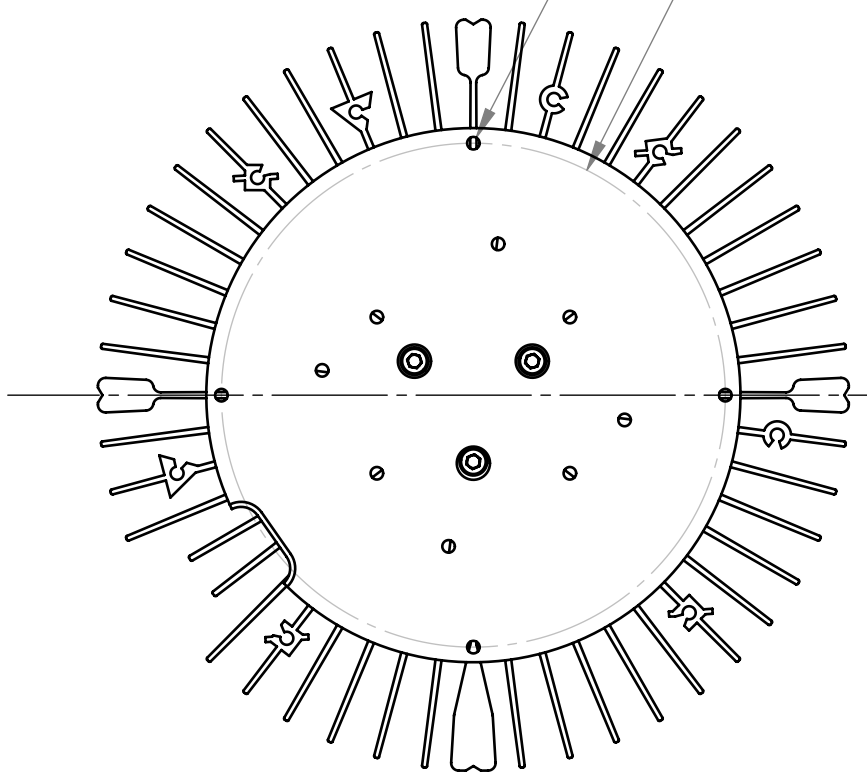
EXTERNAL MOUNTING HOLES

D
C
B
A

D
C
B
A

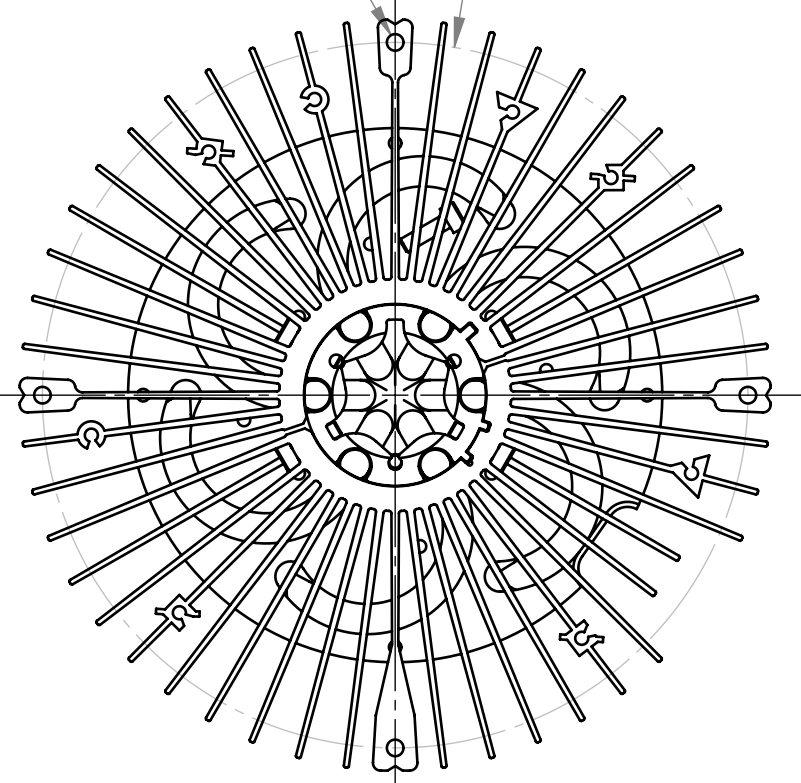
4X Ø 2.50 THRU
M3X0.5 - 6H THRU

Ø 100.0
BOLT CIRCLE




4X Ø 3.30 ▽ 10.10
M4X0.7 - 6H ▽ 8.00

Ø 140.0±0.5
BOLT CIRCLE



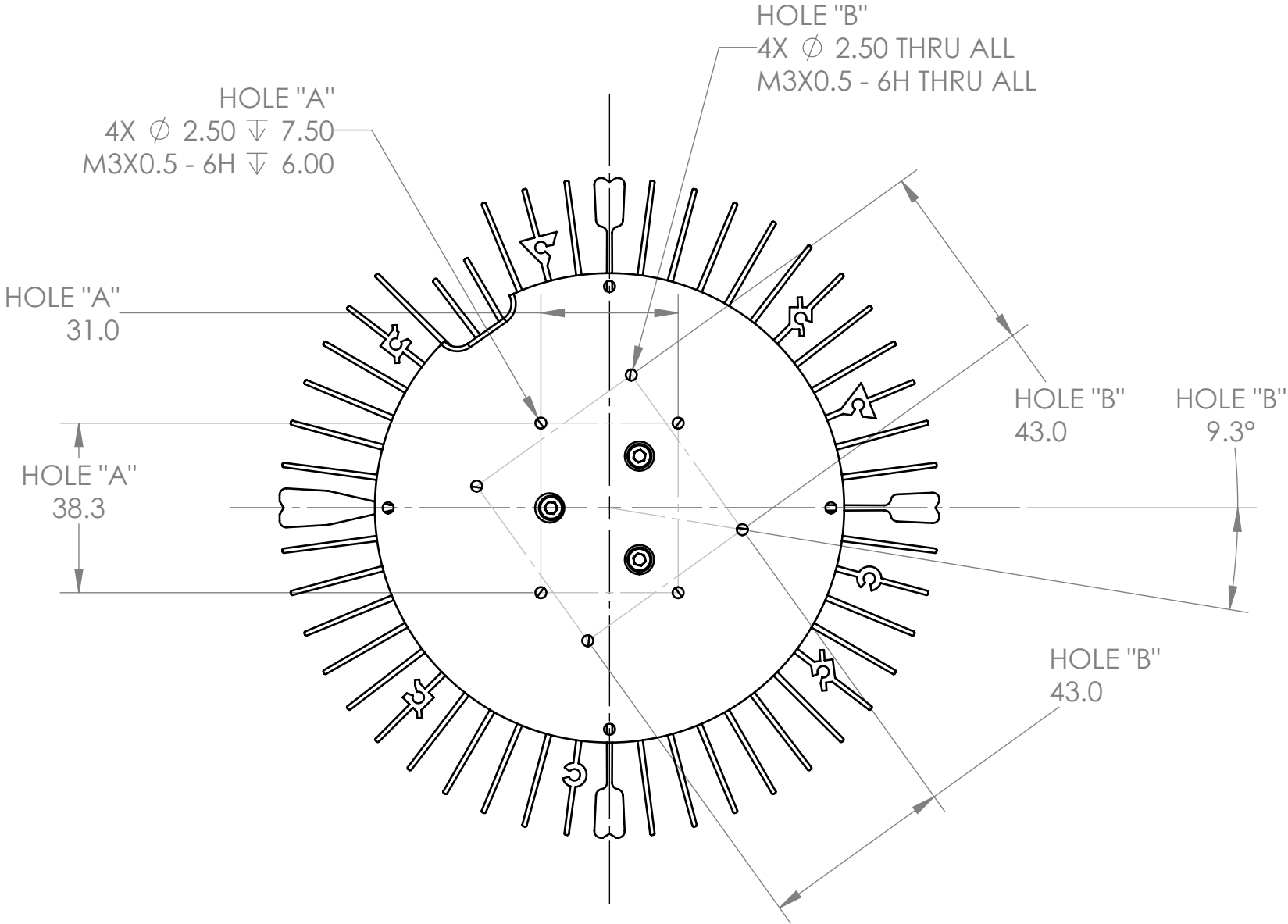
4X Ø 3.30 ▽ 10.10
M4X0.7 - 6H ▽ 8.00

PROPRIETARY AND CONFIDENTIAL: THE INFORMATION CONTAINED IN THIS DRAWING IS THE SOLE PROPERTY OF NUVENTIX, INC. ANY REPRODUCTION IN PART OR AS A WHOLE WITHOUT THE WRITTEN PERMISSION OF NUVENTIX, INC IS PROHIBITED.



TITLE: Heat Sink Assembly, High Bay 150W		
SIZE B	DWG. NO. NX302105	REV X01
SCALE: 2:3	SHEET 2 OF	4

LED MOUNTING HOLES



 **NUVENTIX**

TITLE: Heat Sink Assembly, High Bay 150W		
SIZE B	DWG. NO. NX302105	REV X01
SCALE: 3:4	SHEET 3 OF	4

PROPRIETARY AND CONFIDENTIAL: THE INFORMATION CONTAINED IN THIS DRAWING IS THE SOLE PROPERTY OF NUVENTIX, INC. ANY REPRODUCTION IN PART OR AS A WHOLE WITHOUT THE WRITTEN PERMISSION OF NUVENTIX, INC IS PROHIBITED.

[illegible]

DETAIL A
SCALE 3:1

8X 55.0°

TITLE: Heat Sink Assembly, High Bay 150W			
SIZE B	DWG. NO. NX302105		REV X01
SCALE: 1:1		SHEET 4 OF 4	