



Solid State Devices, Inc.

14701 Firestone Blvd * La Mirada, Ca 90638
 Phone: (562) 404-4474 * Fax: (562) 404-1773
 ssdi@ssdi-power.com * www.ssdi-power.com

SDA267A thru SDA267G

10 AMPS
50 – 1000 VOLTS
FAST RECOVERY
SINGLE PHASE BRIDGE RECTIFIER

Designer's Data Sheet

Part Number/Ordering Information ^{1/}
SDA267

Screening ^{2/} $\overline{\text{L}}$ = Not Screened
 $\overline{\text{TX}}$ = TX Level
 $\overline{\text{TXV}}$ = TXV

Peak Inverse Voltage
 A = 50V, B = 100V, C = 200V, D = 400V
 E = 600V, F = 800V, and G = 1,000V

- FEATURES:**
- Average Output Current 10 Amps
 - PIV 50 to 1000 Volts
 - Reverse Recovery Time 150 ns Max
 - Max Thermal Resistance 5.0°C/Watt
 - Hermetically Sealed Diode Cells
 - Turret Terminal
 - Aluminum Case
 - Available in Standard, Ultra Fast, and Hyper Fast versions - Consult Factory
 - TX and TXV Screening Available

ELECTRICAL CHARACTERISTICS^{3/}

Part Number	Peak Inverse Voltage (per leg)	Sine Wave RMS Input Voltage Max.	Average DC Output Current		Average DC Output Current			Peak Forward Surge Current (1 Cycle)	Peak Repetitive Forward Current	Maximum Forward Voltage (per leg)	Maximum Reverse Current (per leg) @ PIV	
			T_C =Case Temp	T_A = Ambient Temp	(no heat sink)						25°C	100°C
Symbol	PIV	V_r	$I_{F(AV)}$		$I_{F(AV)}$			I_{FSM}	I_{FRM}	V_F	I_R	
Units	Volts	Volts	Amps		Amps			Amps	Amps	Volts	µA	
Conditions			55°C	100°C	25°C	55°C	100°C				25°C	100°C
SDA267A	50	35	10	6	4	3	1.7	125	60	1.2	2	50
SDA267B	100	70	10	6	4	3	1.7	125	60	1.2	2	50
SDA267C	200	140	10	6	4	3	1.7	125	60	1.2	2	50
SDA267D	400	280	10	6	4	3	1.7	125	60	1.2	2	50
SDA267E	600	420	10	6	4	3	1.7	125	60	1.2	2	50
SDA267F	800	560	10	6	4	3	1.7	125	60	1.2	2	50
SDA267G	1000	700	10	6	4	3	1.7	125	60	1.2	2	50

NOTES:

* Pulse Test: Pulse Width = 300µsec, Duty Cycle = 2%

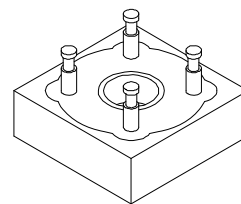
NOTES:

1/ For Ordering Information, Price, Operating Curves and Availability- Contact Factory.

2/ Screening based on MIL-PRF-19500. Screening flows available on request.

3/ Unless Otherwise Specified, All Electrical Characteristics @25°C.

SDA267



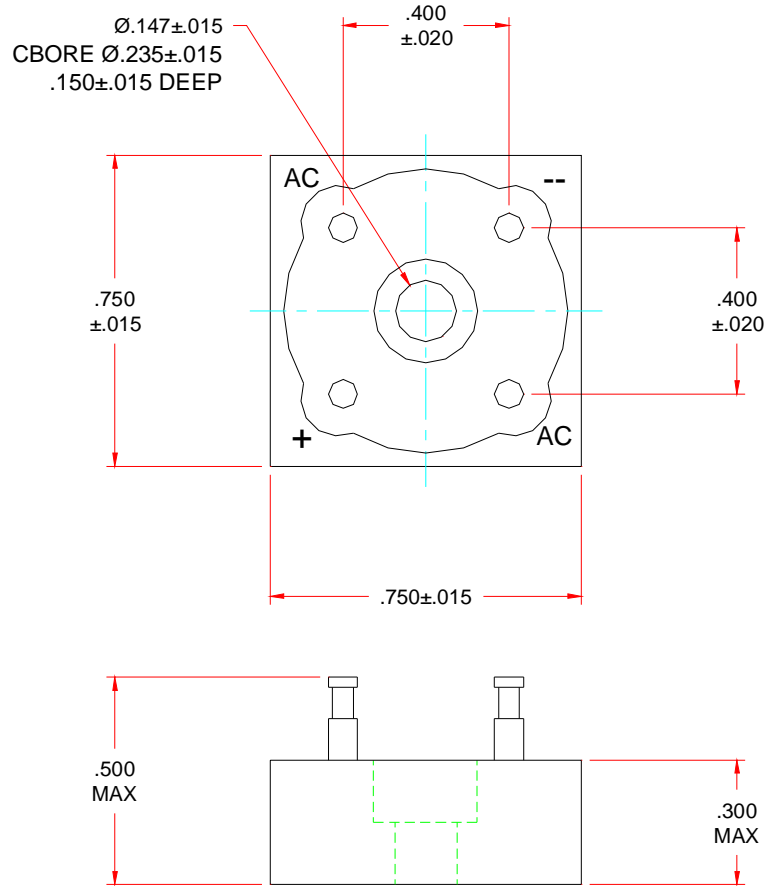


Solid State Devices, Inc.

14701 Firestone Blvd * La Mirada, Ca 90638
Phone: (562) 404-4474 * Fax: (562) 404-1773
ssdi@ssdi-power.com * www.ssdi-power.com

SDA267A thru SDA267G

PACKAGE OUTLINE: SDA267



NOTE: All specifications are subject to change without notification. SCD's for these devices should be reviewed by SSDI prior to release.

DATA SHEET #: RA0077B

DOC