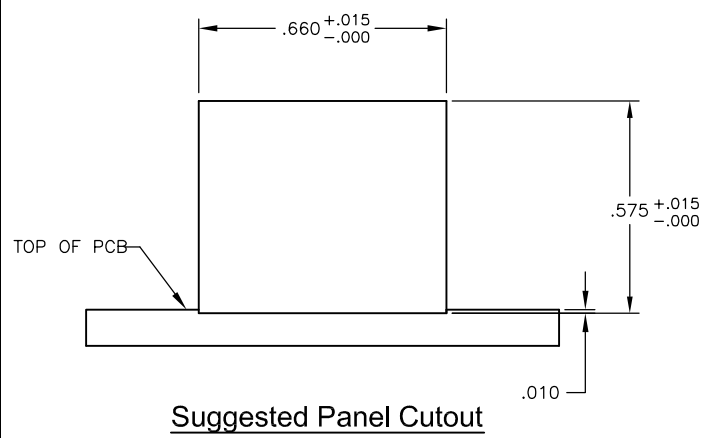
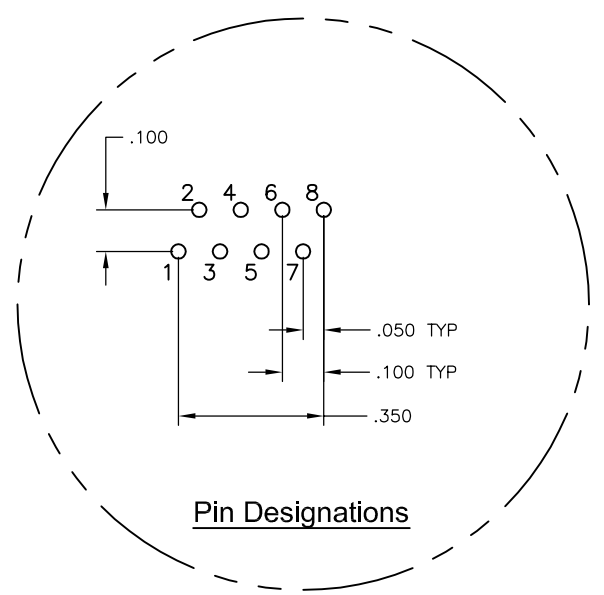
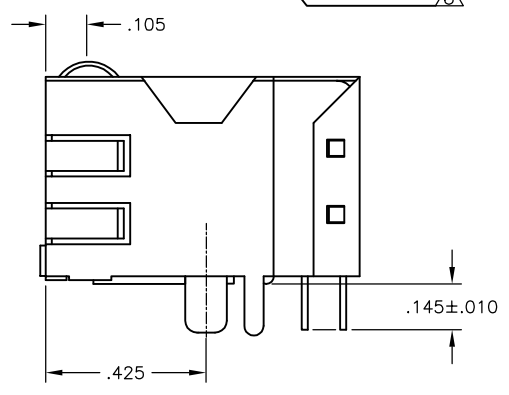
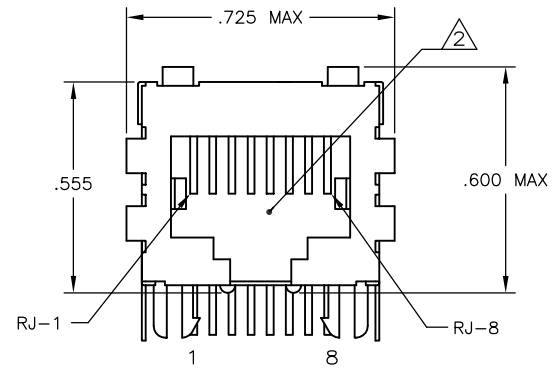
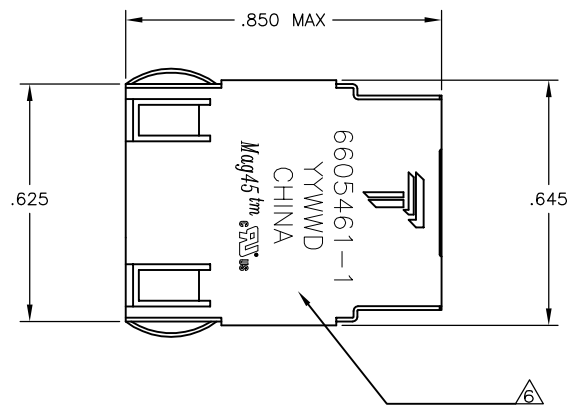


REVISIONS					
#	LN	DESCRIPTION	DATE	BY	APP
D		LOGO CHANGE	23APR2013	JC	KZ

**MECHANICAL:**

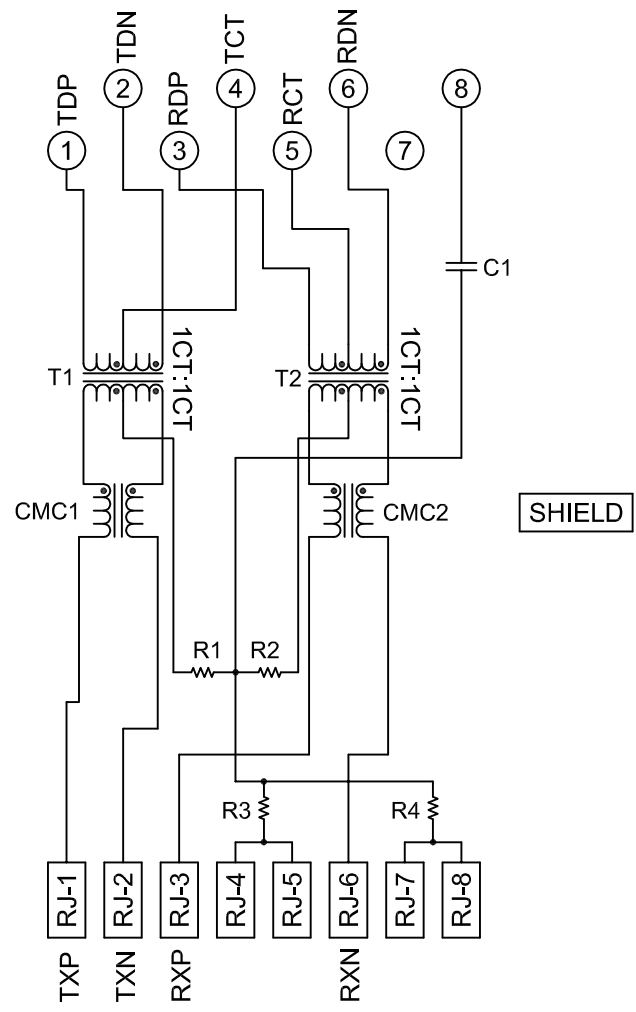


**Suggested Panel Cutout**

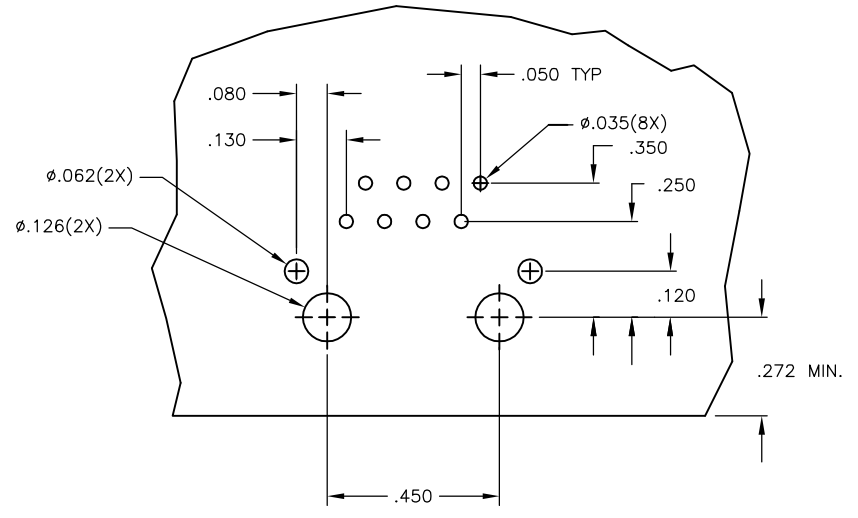
SHIELD

**ELECTRICAL:**

**426P13 MAGNETIC CIRCUIT**



C1 = 1000 pF, 2kV CAPACITOR  
R1-R4 = 75 OHMS, 1/16 W RESISTORS



**Suggested PCB Layout (Component Side)**

- ⚠️ **MATERIALS:**  
HOUSING - THERMOPLASTIC PET POLYESTER FLAMMABILITY RATING UL 94V-0.  
SHIELD - .010" THICK, C26800 BRASS PREPLATED WITH 30μinch SEMI-BRIGHT NICKEL. SOLDER TABS POST-DIPPED WITH SAC SOLDER.  
MOD JACK CONTACTS - .0157" x .018" THICK, PHOSPHOR BRONZE, 50μinch MIN OVERALL NICKEL UNDERPLATE, WITH SELECT 50μinch MIN HARD GOLD FINISH PLATE. SOLDER TAILS WITH 100μinch MIN MATTE TIN AND/OR SAC SOLDER DIP.
- ⚠️ **RJ45 JACK CAVITY CONFORMS TO FCC RULES AND REGULATIONS PART 68, SUB PART F.**
- ⚠️ **MAGNETICS:**  
-APPLICATION: 10/100 BASE-T  
-IMPEDANCE: 100 OHMS  
-TURNS RATIO (CHIP:CABLE): TX = 1:1, RX = 1:1  
-OPEN CIRCUIT INDUCTANCE (OCL): 350mH MIN @100kHz, 0.1VRMS, 8mADC BIAS FROM 0°C TO 70°C, TX AND RX  
-PERFORMANCE @ 25°C:  
  INSERTION LOSS (IL): 1.1dB MAX FROM 0.5MHz TO 100MHz  
  RETURN LOSS (RL): 18dB MIN FROM 0.5MHz TO 30MHz  
  18-20LOG(f/30)dB MIN FROM 30.1MHz TO 60MHz  
  12dB MIN FROM 60.1MHz TO 80MHz  
  CROSSTALK ATTENUATION: 35dB MIN FROM 0.5MHz TO 40MHz  
  33-20LOG(f/50)dB MIN FROM 40.1MHz TO 100MHz  
  COMMON MODE REJECTION RATIO (CMRR): 30dB MIN FROM 0.5MHz TO 100MHz  
-ISOLATION VOLTAGE: 2250VDC (MAX) FOR 60 SECONDS WITH A RISE TIME OF 500V/SEC.
- 4. OPERATING TEMPERATURE: FROM 0°C TO +70°C.
- ⚠️ INDICATED CONNECTIONS ARE FOR NIC CONFIGURATION. THE MAGNETICS ARE SYMMETRIC AND SUPPORT AUTO-MDI/MDIX.
- ⚠️ TRP CONNECTOR LOGO, PART NUMBER, DATE CODE, COUNTRY OF ORIGIN AND AGENCY APPROVAL MARKING IN APPROXIMATE LOCATION SHOWN.
- 7. THE PART IS RECOMMENDED FOR WAVE SOLDERING PROCESS, PREHEAT TEMPERATURE IS 120°C TO 160°C, 120 SECONDS TO 180 SECONDS, PEAK SOLDERING TEMPERATURE IS 260 °C MAX, 10 SECONDS MAX.

6605461-1  
PART NUMBER

THIS DRAWING IS A CONTROLLED DOCUMENT.		DRN C GILLETTE 28NOV2005	TRP connector Dongguan China	
DIMENSIONS: INCHES		TOLERANCES UNLESS OTHERWISE SPECIFIED: 0 PLC ± - 1 PLC ± .010 2 PLC ± .005 3 PLC ± .005 4 PLC ± .005 ANGLES ± -	PRODUCT SPEC 108-2100	NAME 1X1 MAG45(TM), 4N2P13 10/100 ETHERNET SCHEMATIC, 426P13 MAGNETIC CIRCUIT, SHIELDED, DECOUPLING CAPACITOR, WITH NO LEADS
MATERIAL FINISH		APPRO D HINDELANG 28NOV2005	SIZE A1	RESTRICTED TO
CUSTOMER DRAWING		SCALE NTS	SHEET 1 OF 1	REV D