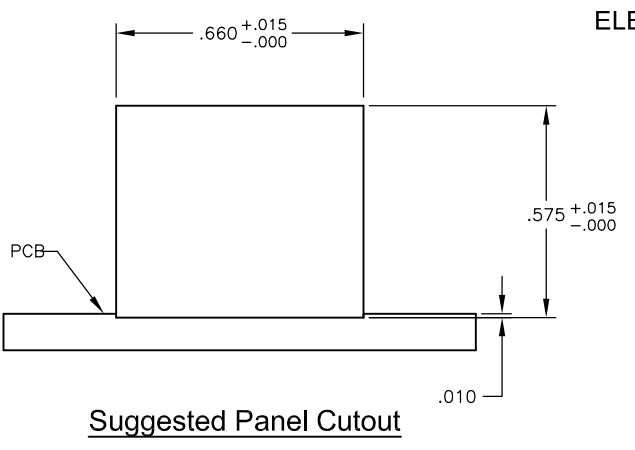
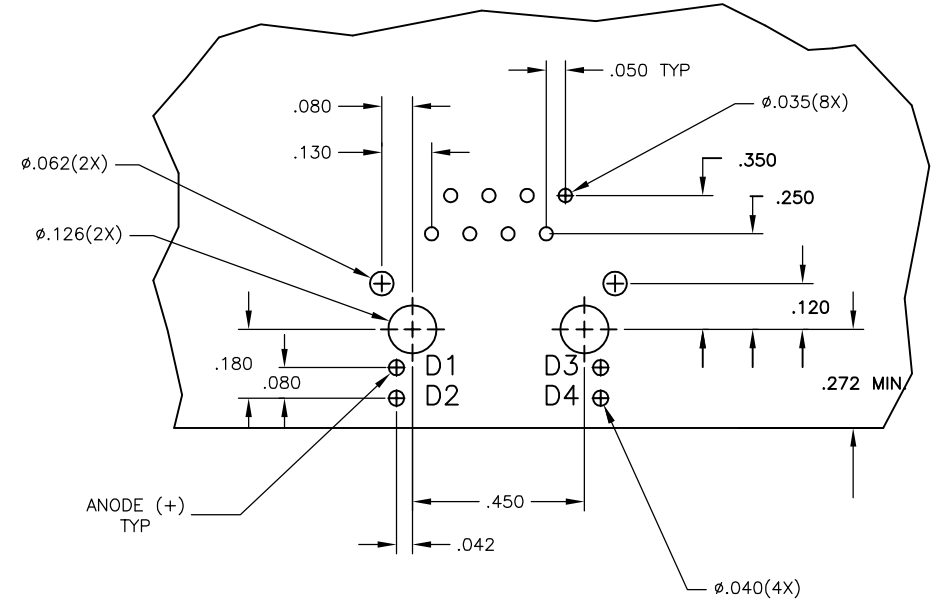
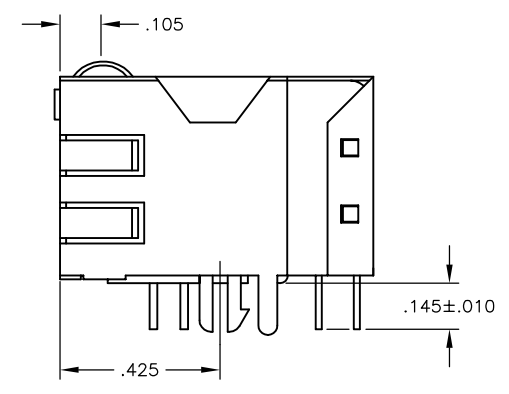
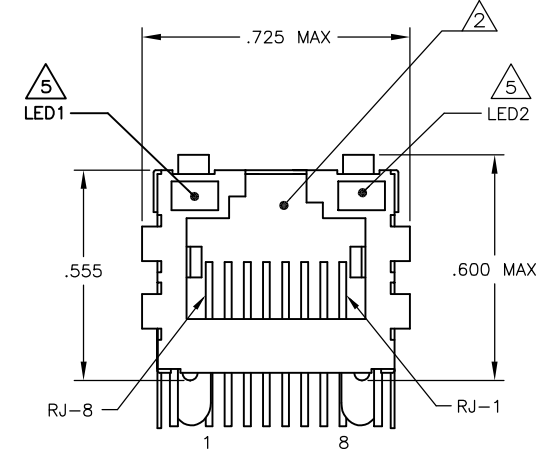
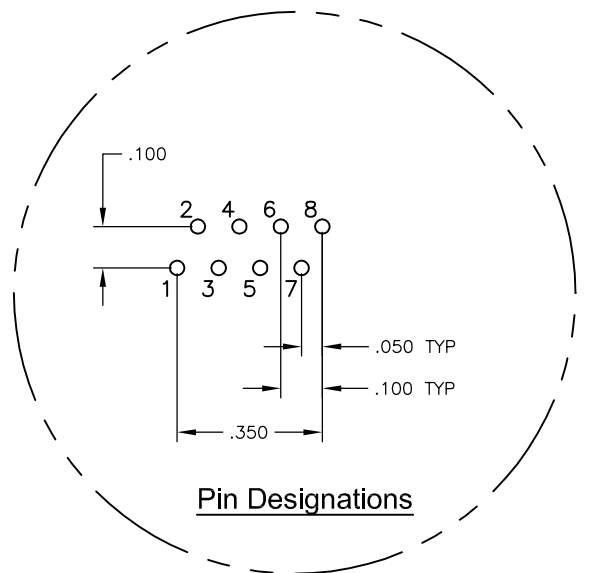
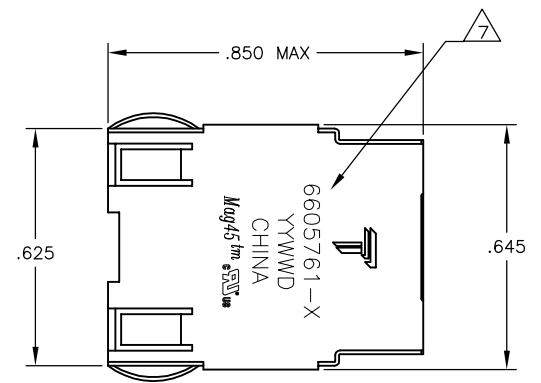


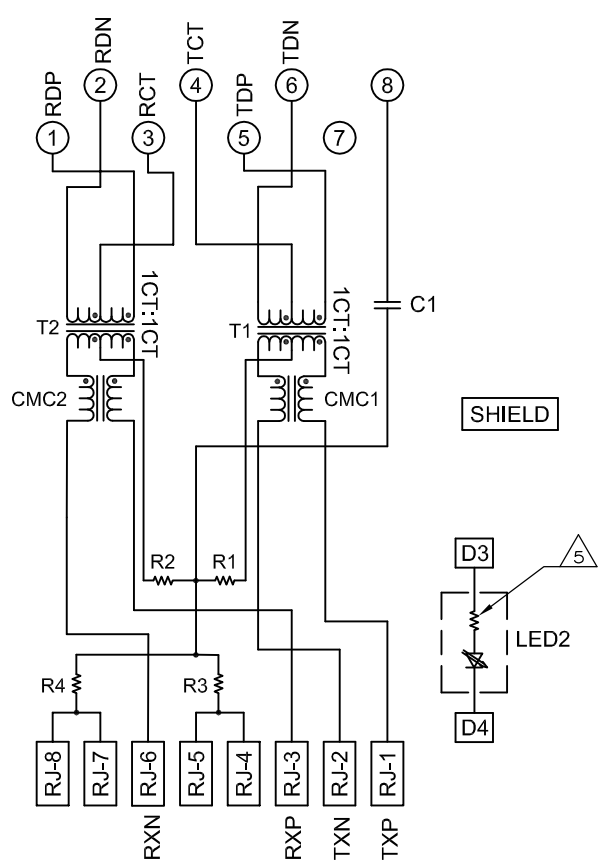
© COPYRIGHT BY TRP CONNECTOR ALL RIGHTS RESERVED.

REVISIONS				
#	LNK	DESCRIPTION	DATE	BY / APP'D
F		LOGO CHANGE	07APR2013	QL / KZ

**MECHANICAL:**

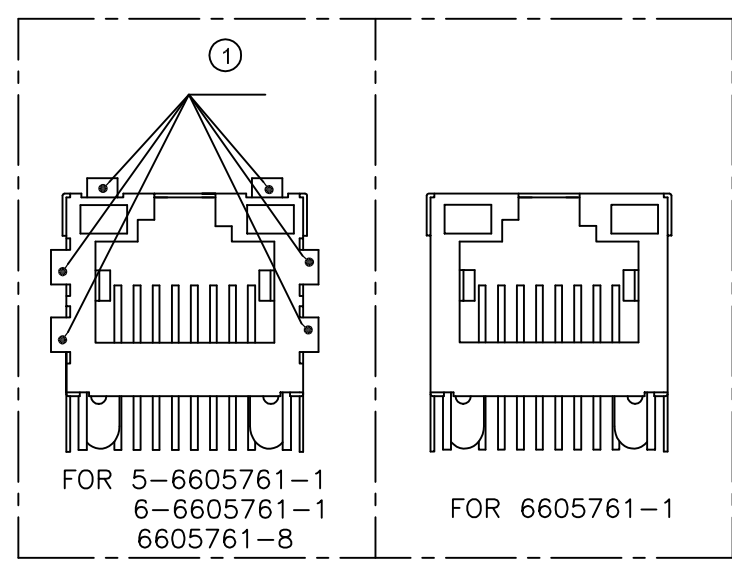


**ELECTRICAL:**  
726ET SERIES MAGNETIC CIRCUIT



C1=1000pF, 2kV CAPACITOR  
R1-R4 = 75 OHMS, 1/16 W RESISTORS

**Suggested PCB Layout (Component Side)**



**MATERIALS:**  
 -HOUSING - THERMOPLASTIC PET POLYESTER FLAMMABILITY RATING UL 94V-0.  
 -SHIELD - .010" THICK, C26800 BRASS PREPLATED WITH 30μINCH MIN SEMI-BRIGHT NICKEL, SOLDER TABS POST DIPPED WITH 100μINCH MIN SAC SOLDER.  
 -MOD JACK CONTACTS - 0.0157" x 0.018" PHOSPHOR BRONZE, 50μINCH MIN OVERALL NICKEL UNDERPLATE, WITH SELECT 50μINCH MIN HARD GOLD FINISH PLATE. SOLDER TAILS WITH 100μINCH MIN MATTE TIN AND/OR SAC SOLDER DIP.  
 -LIGHT EMITTING DIODE(LED) - DIFFUSED EPOXY LENS, .020" x .020" CARBON STEEL WIREFRAME LEADS PRE-PLATED WITH 80μINCH SILVER OVER 40μINCH NICKEL UNDERPLATE OVER 40μINCH COPPER UNDERPLATE, POST-PLATED WITH 100μINCH MIN MATTE TIN AND/OR SAC SOLDER DIP OR PURE TIN SOLDER DIP.

**RJ45 JACK CAVITY CONFORMS TO FCC RULES AND REGULATIONS PART 68, SUB PART F.**

**MAGNETICS**  
 -IMPEDANCE: 100 OHMS  
 -TURNS RATIO (CHIP:CABLE): TX = 1:1, RX = 1:1  
 -OPEN CIRCUIT INDUCTANCE (OCL): 350uH MIN @100kHz, 0.1VRMS, 8mADC BIAS FROM -40°C TO +85°C, TX AND RX  
 -PERFORMANCE @ 25°C:  
 INSERTION LOSS (IL): 1.1dB MAX FROM 0.5MHZ TO 100MHZ  
 RETURN LOSS (RL): 18dB MIN FROM 0.5MHZ TO 30MHZ  
 18-20LOG(f/30)dB MIN FROM 30.1MHZ TO 60MHZ  
 12dB MIN FROM 60.1MHZ TO 80MHZ  
 CROSSTALK ATTENUATION: 35dB MIN FROM 0.5MHZ TO 40MHZ  
 33-20xLOG(f/50)dB MIN FROM 40.1MHZ TO 100MHZ  
 COMMON MODE REJECTION RATIO (CMRR): 30dB MIN FROM 0.5MHZ TO 100MHZ  
 -ISOLATION VOLTAGE:2250VDC (MAX) FOR 60 SECONDS WITH A RISE TIME OF 500V/SEC.

**4. OPERATING TEMPERATURE: FROM -40°C TO +85°C INDUSTRIAL TEMPERATURE RATED.**

**LED WITH 250 OHM RESISTORS, LED IS DRIVEN WITH 5V VOLTAGE AND THE MAX OPERATING CURRENT IS 20mA.**  
 LED COLOR : DOMINANT WAVELENGTH (λD): GREEN 568 nm TYP @ VF=5V  
 FORWARD CURRENT (IF): GREEN 12 mA TYP @ VF=5V  
 DOMINANT WAVELENGTH (λD): YELLOW 588 nm TYP @ VF=5V  
 FORWARD CURRENT (IF): YELLOW 13 mA TYP @ VF=5V  
**LED WITHOUT RESISTORS, LEDS ARE DRIVEN WITH CONSTANT CURRENT AT APPROX 20mA**  
 LED COLOR: DOMINANT WAVELENGTH (λ D): GREEN 568 nm TYP. at IF=20mA  
 FORWARD VOLTAGE (VF): GREEN 2.2V TYP. at IF=20mA  
 DOMINANT WAVELENGTH (λ D): YELLOW 588 nm TYP. at IF=20mA  
 FORWARD VOLTAGE (VF): YELLOW 2.1V TYP. at IF=20mA

**INDICATED CONNECTIONS ARE FOR NIC CONFIGURATION. THE MAGNETICS ARE SYMMETRICAL, AND SUPPORTS AUTO-MDI/MDIX.**

**TRP CONNECTOR LOGO, PART NUMBER, DATE CODE, COUNTRY OF ORIGIN AND AGENCY APPROVAL MARKING IN APPROXIMATE LOCATION SHOWN.**

**8. THESE PARTS ARE RECOMMENDED FOR WAVE SOLDERING PROCESS, PREHEAT TEMPERATURE IS 120°C TO 160°C, 120 SECONDS TO 180 SECONDS, PEAK SOLDERING TEMPERATURE IS 260 °C MAX, 10 SECONDS MAX.**

YES	W/O	GREEN	W/O	YELLOW	6605761-8
NO	W/	GREEN	W/	YELLOW	6605761-1
YES	W/	GREEN	W/	GREEN	6-6605761-1
YES	W/	GREEN	W/	YELLOW	5-6605761-1
TABS ①	LED 1 WITH RESISTOR (250 Ohms)	LED1 ⑤	LED 2 WITH RESISTOR (250 Ohms)	LED2 ⑤	PART NUMBER

THIS DRAWING IS A CONTROLLED DOCUMENT.

DESIGNED BY: L. VARELA - DOCKS	DATE: 02MAR2005	TRP connector
CHECKED BY: D. FAROLE	DATE: 02MAR2005	Dongguan China
APPROVED BY: D. FAROLE	DATE: 02MAR2005	
PRODUCT SPEC: 108-2100	INDUSTRIAL TEMP SCHEMATIC, 726ET SERIES CIRCUIT, DECOUPLING CAPACITOR, WITH RESISTOR LEDS	
MATERIAL: A1	SIZE: 00779	SCALE: NTS
WEIGHT: -	RESTRICTED TO: -	SHEET: 1 OF 1
CUSTOMER DRAWING	SCALE: NTS	REV: F