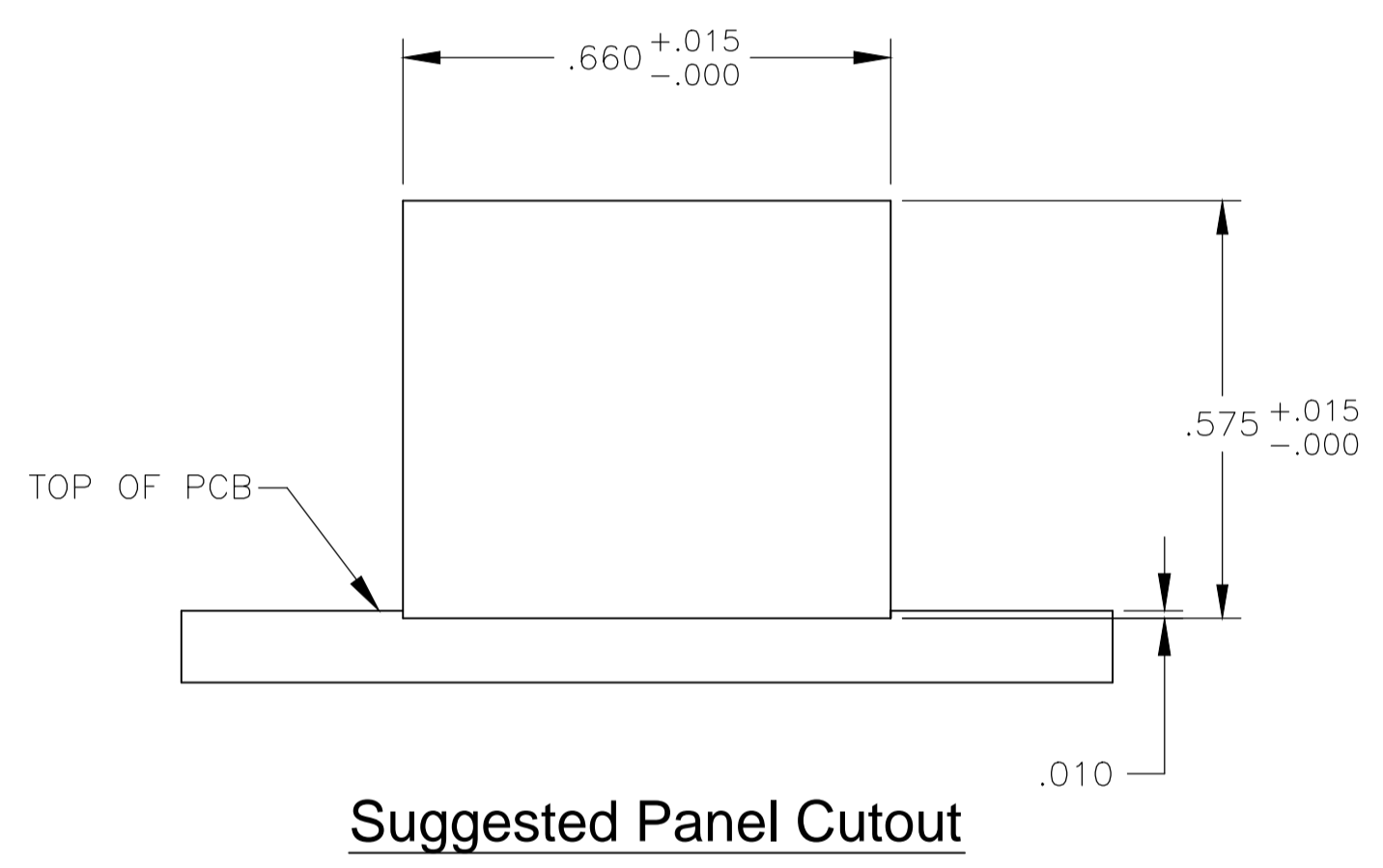
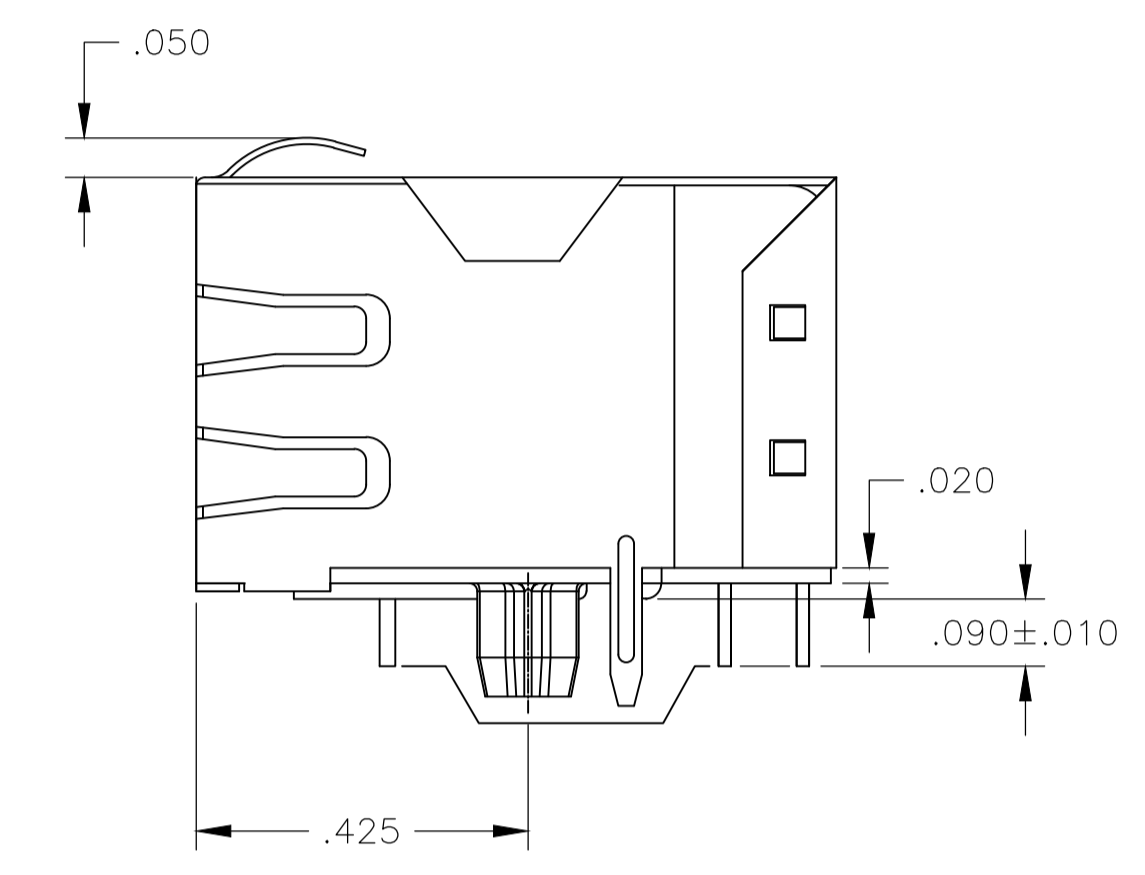
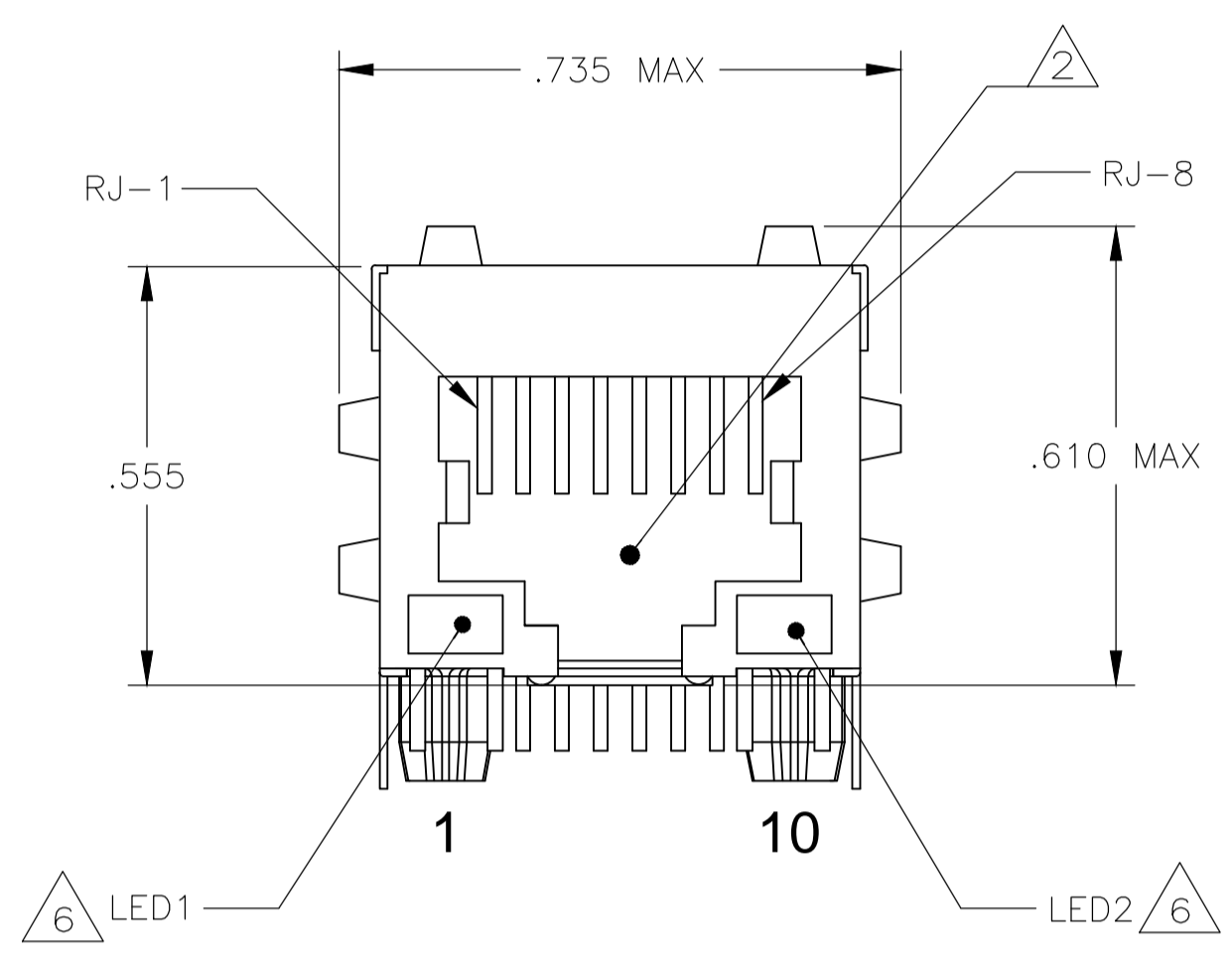
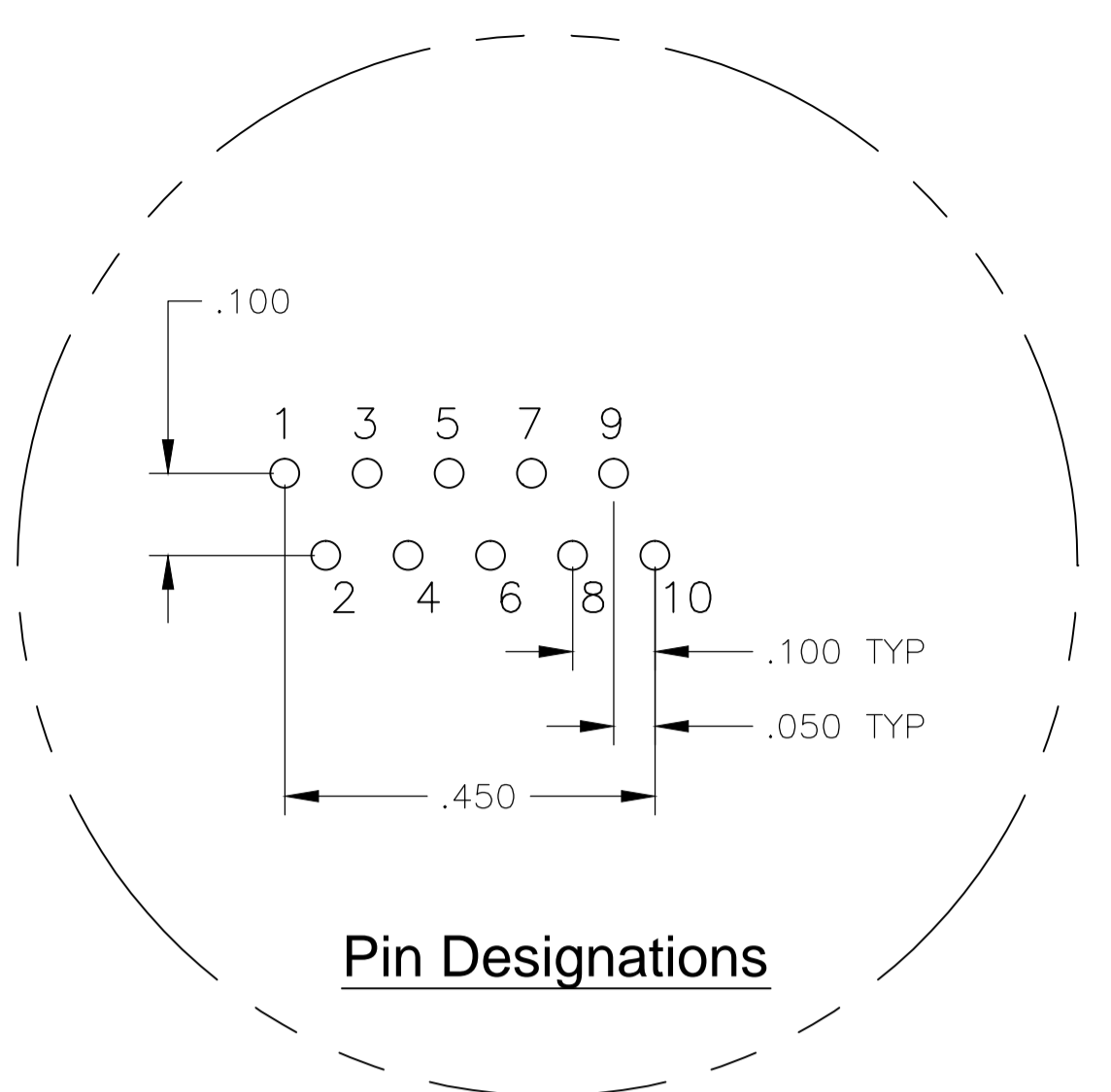
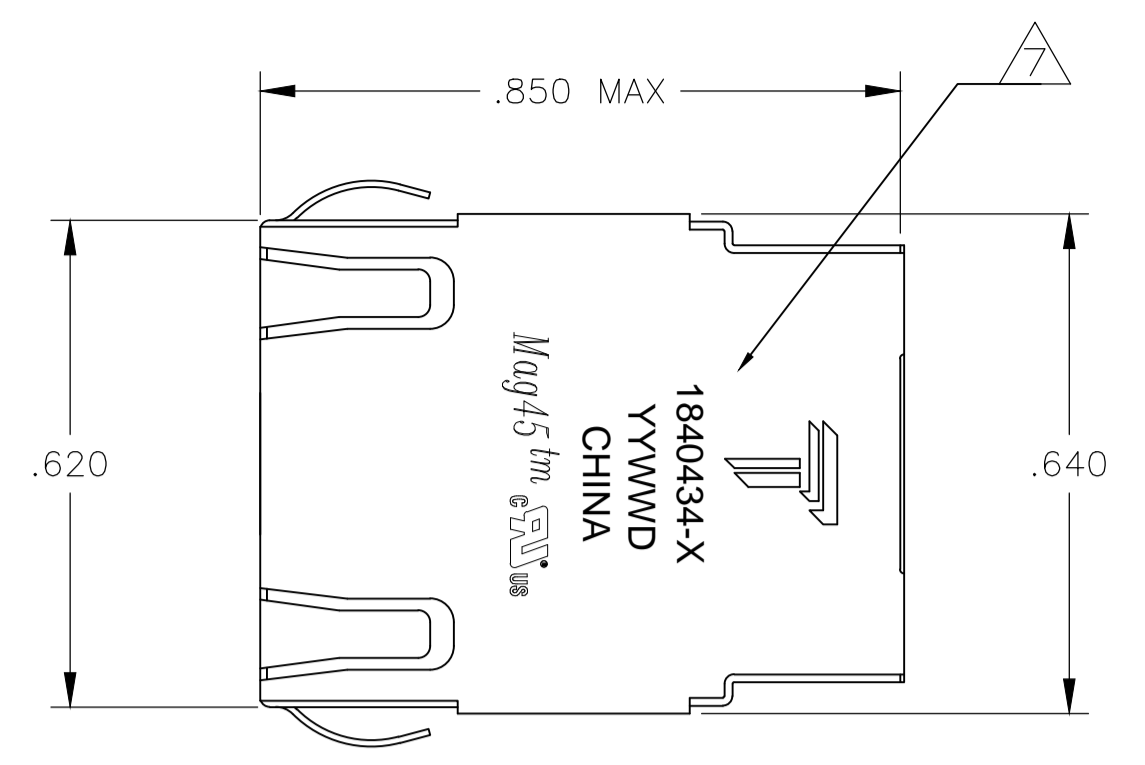


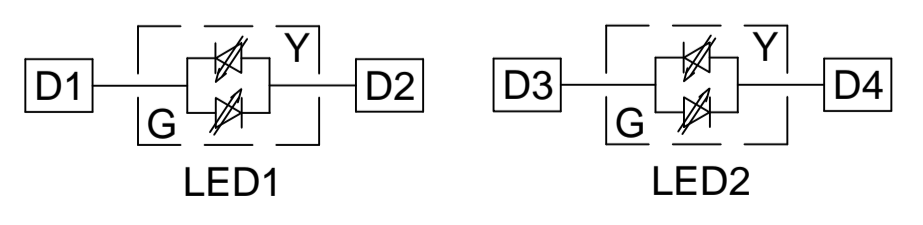
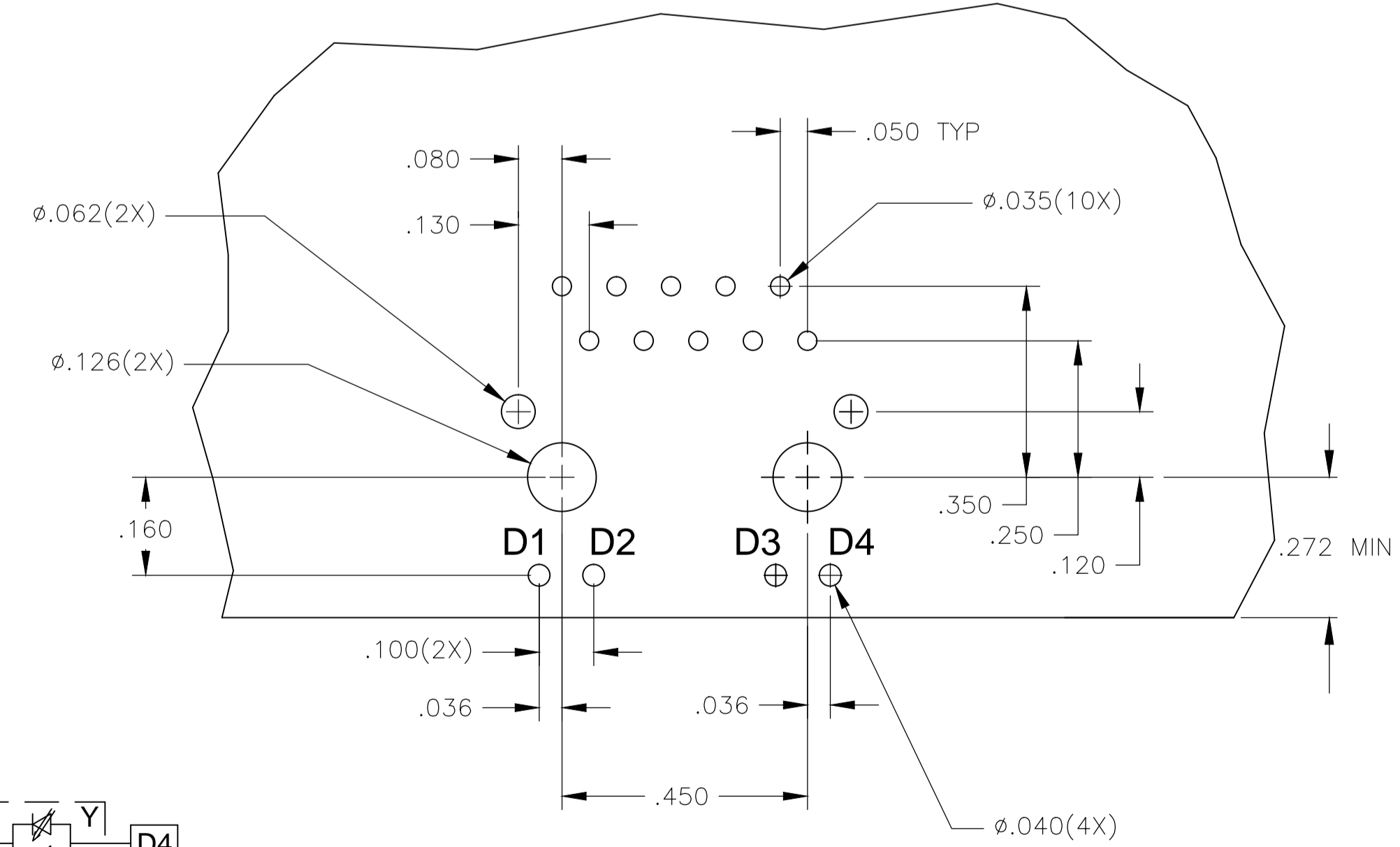
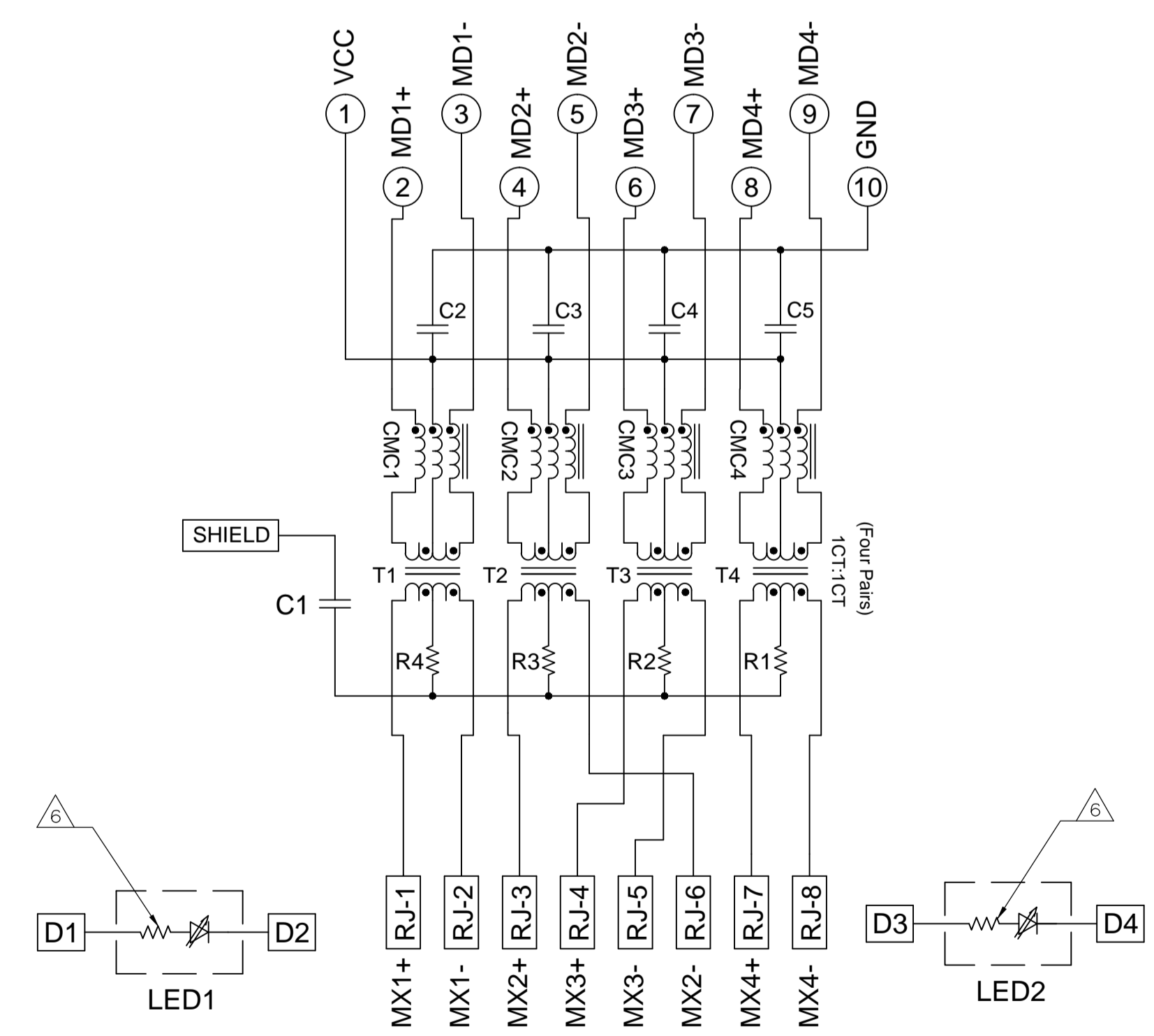
REVISIONS				
P	LTR	DESCRIPTION	DATE	OWN APVD
C		LOGO CHANGE	07APR2013	PP KZ

MECHANICAL:



ELECTRICAL:

4G46P1 GIGABIT CIRCUIT



C1=1000 pF, 2kV CAPACITOR
 R1-R4=75 OHMS, 5%, 1/16W RESISTOR
 C2-C5=0.1uF, 10%, 50V CAPACITOR

LED CONFIGURATION FOR BI-COLOR

- MATERIALS:**
 HOUSING - THERMOPLASTIC PET POLYESTER FLAMMABILITY RATING UL 94V-0.
 SHIELD - .008" THICK, C26800 BRASS PREPLATED WITH 30μINCH SEMI-BRIGHT NICKEL. SOLDER TABS POST DIPPED WITH 100μINCH MIN SAC SOLDER.
 MOD JACK CONTACTS - 0.0157 X 0.018" PHOSPHOR BRONZE, 50μINCH MIN OVERALL NICKEL UNDERPLATE, WITH SELECT 50μINCH MIN HARD GOLD FINISH PLATE.
 SOLDER TAILS WITH 100μINCH MIN MATTE TIN AND/OR SAC SOLDER DIP.
 LIGHT EMITTING DIODE(LED) - DIFFUSED EPOXY LENS, .020" x .020" CARBON STEEL WIREFRAME LEADS PRE-PLATED WITH 80μINCH SILVER OVER 40μINCH NICKEL UNDERPLATE OVER 40μINCH COPPER UNDERPLATE. POST-PLATED WITH 100μINCH MIN MATTE TIN AND/OR SAC SOLDER DIP OR PURE TIN SOLDER DIP.
- RJ45 JACK CAVITY CONFORMS TO FCC RULES AND REGULATIONS PART 68, SUB PART F.**
- MAGNETICS**
 -APPLICATION: 10/100/1000 BASE-T
 -IMPEDANCE: 100 OHMS
 -TURNS RATIO (CHIP-CABLE): 1:1 ALL FOUR PAIRS
 -OPEN CIRCUIT INDUCTANCE (OCL): 350μH MIN @100kHz, 0.1VRMS, 8mADC BIAS FROM 0°C TO 70°C, ALL FOUR PAIRS
 -ALL FOUR PAIRS BI-DIRECTIONAL
 -PERFORMANCE @ 25°C:
 INSERTION LOSS (IL): 1.1dB MAX FROM 0.5MHz TO 100MHz
 RETURN LOSS (RL): 18dB MIN FROM 0.5MHz TO 40MHz
 12-20LOG(f/80)dB MIN FROM 40.1MHz TO 100MHz
 CROSSTALK ATTENUATION: 35dB MIN FROM 0.5MHz TO 40MHz
 33-20LOG(f/50)dB MIN FROM 40.1MHz TO 100MHz
 COMMON MODE REJECTION RATIO (CMRR): 30dB MIN FROM 0.5MHz TO 100MHz
 -ISOLATION VOLTAGE: COMPLIES WITH IEEE802.3 2002, PARA 40.6.1.1, ITEM b
4. OPERATING TEMPERATURE: FROM 0°C TO +70°C
- THE MAGNETICS ARE SYMMETRIC, AND SUPPORT AUTO-MDI/MDIX.
- THE 250 OHM RESISTOR IS OPTIONAL, PLEASE SEE CHART FOR PRESENCE OR ABSENCE OF LED RESISTORS.
 IF LEDS WITHOUT 250 OHM RESISTOR, LEDS ARE DRIVEN WITH CONSTANT CURRENT AT APPROX 20 mA
 LED COLOR: DOMINANT WAVELENGTH (λD): GREEN 568 nm TYP @ IF=20 mA
 FORWARD VOLTAGE (VF): GREEN 2.2V TYP @ IF=20 mA
 DOMINANT WAVELENGTH (λD): YELLOW 588 nm TYP @ IF=20 mA
 FORWARD VOLTAGE (VF): YELLOW 2.1V TYP @ IF=20 mA
 IF LEDS WITH BUILT-IN RESISTOR, LEDS ARE DRIVEN WITH 5V VOLTAGE AND THE MAX OPERATING CURRENT IS 20mA
 LED COLOR: DOMINANT WAVELENGTH (λD): GREEN 568 nm TYP @ VF=5V
 FORWARD CURRENT (IF): GREEN 12mA TYP @ VF=5V
 DOMINANT WAVELENGTH (λD): YELLOW 588 nm TYP @ VF=5V
 FORWARD CURRENT (IF): YELLOW 13mA TYP @ VF=5V
- TRP CONNECTOR LOGO, PART NUMBER, DATE CODE, COUNTRY OF ORIGIN AND AGENCY APPROVAL MARKING IN APPROXIMATE LOCATION SHOWN.
- THESE PARTS ARE RECOMMENDED FOR WAVE SOLDERING PROCESS, PREHEAT TEMPERATURE IS 120°C TO 160°C, 120 SECONDS TO 180 SECONDS, PEAK WAVE SOLDERING TEMPERATURE IS 260°C MAX, 10 SECONDS MAX.

LED 1	RESISTOR	LED 2	RESISTOR	PART NUMBER
GREEN	YES	GREEN	YES	1-1840434-1
YELLOW	NO	YELLOW	NO	1-1840434-0
YELLOW	NO	GREEN	NO	1840434-9
GREEN	NO	YELLOW	NO	1840434-8
GREEN	NO	GREEN	NO	1840434-7
GREEN/YELLOW	NO	GREEN/YELLOW	NO	1840434-6
GREEN/YELLOW	NO	GREEN	NO	1840434-5
GREEN/YELLOW	NO	GREEN	YES	1840434-4
YELLOW	YES	YELLOW	YES	1840434-3
YELLOW	YES	GREEN	YES	1840434-2
GREEN	YES	YELLOW	YES	1840434-1

THIS DRAWING IS A CONTROLLED DOCUMENT.

DMN: CLOUD ZENG 17APR2007	TRP connector
CHK: DENNIS CHEN 17APR2007	Dongguan China
APVD: TEDDY XIONG 17APR2007	

PRODUCT SPEC: 108-2100
 APPLICATION SPEC: 1X1 MAG45(TM), MODULAR JACK, 4G46P1 GIGABIT CIRCUIT, SHIELDED WITH LEDS

SIZE: A1 CAGE CODE: 00779 DRAWING NO: 1840434

CUSTOMER DRAWING SCALE: NTS SHEET 1 OF 1 REV C