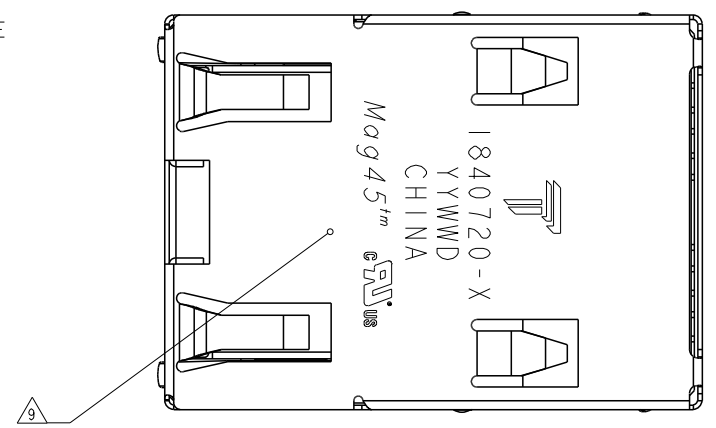
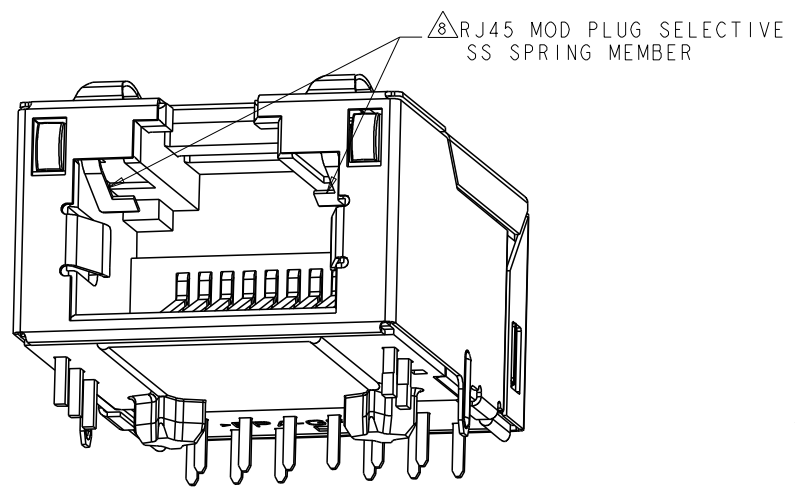


REVISIONS				
REV	DATE	BY	CHK	APP
H	07MAY2013	TY	KZ	
LOGO CHANGE				



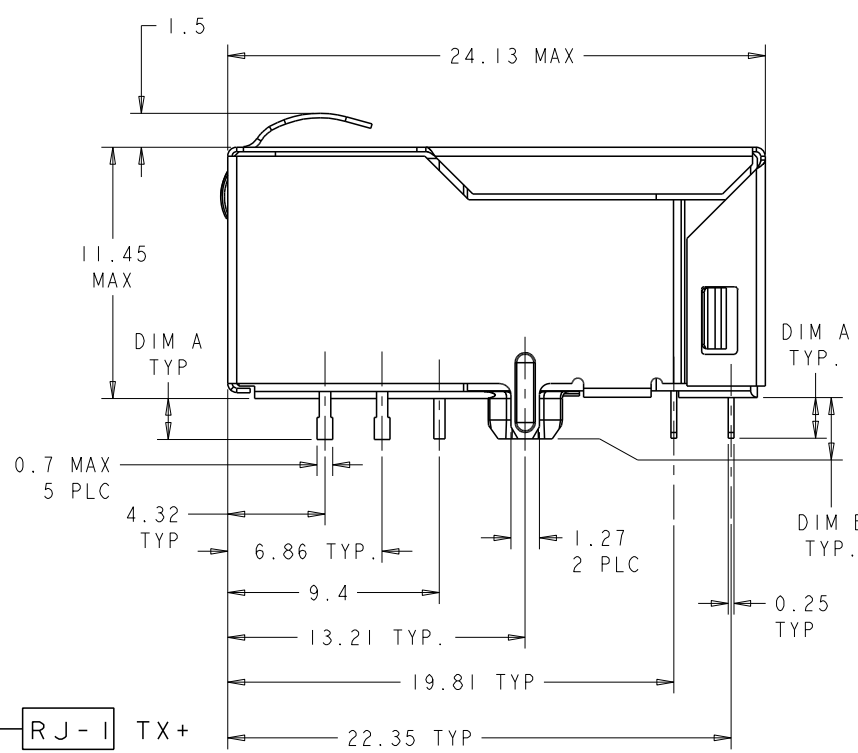
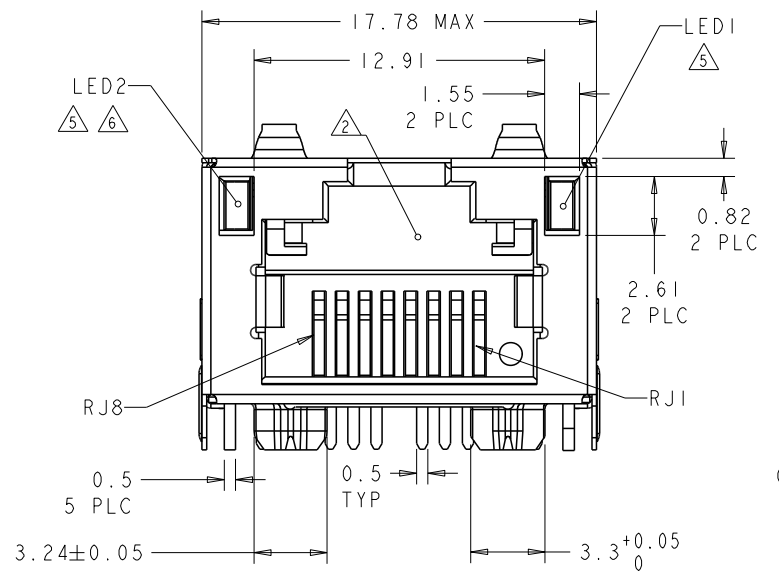
- 1 MATERIALS:
 -HOUSING: HIGH TEMPERATURE NYLON, BLACK, UL 94V-0
 -SHIELD: 0.20mm THICK, BRASS PREPLATED WITH 0.76 μm MIN SEMI-BRIGHT NICKEL; POST-DIPPED WITH 2μm MIN SAC 305 ALLOY LEAD FREE SOLDER (TIN PRIMARY, 3% SILVER, 0.5% COPPER)
 -CONTACT TAILS: 0.25mm THICK, PHOSPHOR BRONZE, 1.27 μm MIN OVERALL NICKEL UNDERPLATE, 3μm MIN TIN PLATE
 -MOD JACK CONTACTS: 0.25mm THICK, PHOSPHOR BRONZE, 1.27 μm MIN OVERALL NICKEL UNDERPLATE, WITH 0.76μm MIN LOCALIZED GOLD PLATE AT PLUG INTERFACE
 -LIGHT EMITTING DIODE (LED): DIFFUSED EPOXY LENS, 0.5mm X 0.5mm CARBON STEEL WIREFRAME LEADS PREPLATED WITH 2.03μm MIN. SILVER PLATE OVER 1.02μm MIN. NICKEL OVER 1.02μm MIN. COPPER UNDERPLATE; LEADS POST-PLATED WITH 3.05μm MIN. MATTE TIN.
 -LIGHT PIPE: POLYETHER SULFONE

- 2 RJ45 JACK CAVITY CONFORMS TO FCC RULES AND REGULATIONS PART 68, SUB-PART F.
- 3 MAGNETICS:
 -APPLICATION: 10/100 BASE-T
 -IMPEDANCE: 100 OHMS
 -TURNS RATIO (CHIP:CABLE): TX = 1:1, RX = 1:1
 -OPEN CIRCUIT INDUCTANCE (OCL): 350 μH (MIN) @100KHz, 0.1 VRMS WITH 8 mA DC BIAS FROM 0°C TO +70°C, TX AND RX
 -PERFORMANCE @25°C:
 INSERTION LOSS (IL): 1.1dB MAX FROM 0.5MHz TO 100MHz
 RETURN LOSS (RL): 18 dB MIN FROM 0.5MHz TO 30MHz
 18-20log(f/30)dB MIN FROM 30.1MHz TO 60MHz
 12dB MIN FROM FROM 60.1MHz TO 80MHz
 CROSSTALK ATTENUATION: 35dB MIN FORM 0.5MHz TO 40MHz
 33-20log(f/50)dB MIN FROM 40.1MHz TO 100MHz
 COMMON MODE REJECTION RATIO (CMRR): 30dB MIN FROM 0.5MHz TO 100MHz
 -ISOLATION VOLTAGE: COMPLIES WITH IEEE802.3.2002, PARA 23.5.1.1, ITEM a OR b

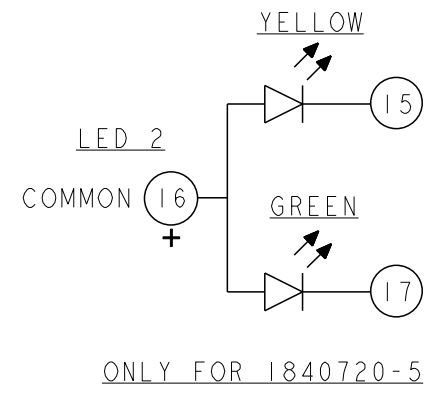
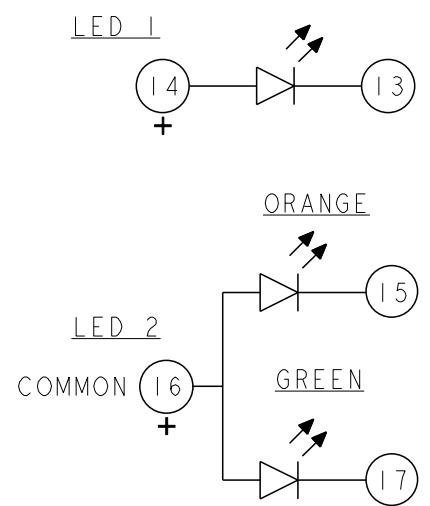
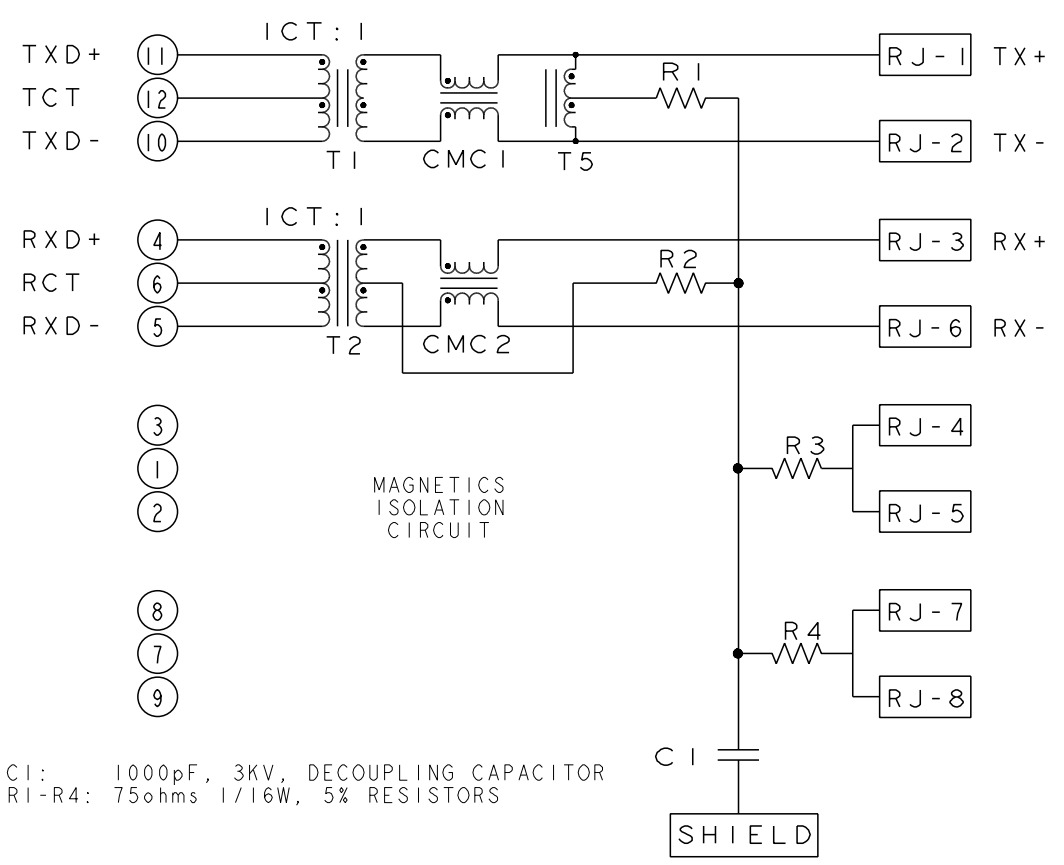
- 4 OPERATING TEMPERATURE: FROM 0°C TO +70°C.
- 5 LEDs ARE DRIVEN WITH CONSTANT CURRENT AT APPROX 20mA.
 LED COLOR: DOMINANT WAVELENGTH (λD): GREEN 568 nm TYP. at IF=20mA
 FORWARD VOLTAGE (VF): GREEN 2.2V TYP. at IF=20mA
 DOMINANT WAVELENGTH (λD): YELLOW 588 nm TYP. at IF=20mA
 FORWARD VOLTAGE (VF): YELLOW 2.1V TYP. at IF=20mA
 DOMINANT WAVELENGTH (λD): ORANGE 605 nm TYP. at IF=20mA
 FORWARD VOLTAGE (VF): ORANGE 2.1V TYP. at IF=20mA

- 6 LED WILL EMULATE "YELLOW" LIGHT WHEN BOTH GREEN AND ORANGE DIODES ARE DRIVEN AT CONSTANT CURRENT (20mA RECOMMENDED) TO INDICATE THE THIRD COLOR STATE.
- 7 ALL DIMENSIONS NOMINAL UNLESS OTHERWISE NOTED.
- 8 RJ45 MOD PLUG SELECTIVE - THIS CONNECTOR UTILIZES STAINLESS STEEL SPRING MEMBER WHICH PREVENTS THE INSERTION OF A RJ11 (6 POSITION) PLUG INTO THE JACK PORT, WHILE ALLOWING A RJ45 (8 POSITION) PLUG TO MATE FREELY.
- WARNING: THIS FEATURE WAS DEVELOPED FOR TYPICAL PLUG INSERTION FORCES. EXCESSIVE INSERTION FORCE MAY OVERCOME THE SELECTIVE FEATURES AND DAMAGE THE CONNECTOR.

- 9 TRP CONNECTOR LOGO, PART NUMBER, DATE CODE, PLACE OF ORIGIN, AGENCY LOGO TO BE MARKED IN APPROXIMATE LOCATION AS SHOWN.
- 10 APPLIES ONLY TO 1840720-2
- 11 1840720-1 SHOWN UNLESS OTHERWISE SPECIFIED
12. THESE PARTS ARE COMPLIANT WITH BOTH WAVE SOLDERING PROCESS PEAK SOLDERING TEMPERATURE 260°C MAX, 10 SECONDS MAX; AND IR REFLOW SOLDERING PROCESS PEAK SOLDERING TEMPERATURE 260°C MAX DURATION TIME 10 SECONDS MAX, OVER 230°C WITHIN 40-60 SECONDS;



114 10/100 BASE-T CIRCUIT



LED 1	LED 2	GROUND TABS	DIM B	DIM A	PART NO.
GREEN	ORANGE/GREEN	TOP ONLY	3.3	3.18	1-1840720-9
GREEN	GREEN/YELLOW	TOP ONLY	3.3	3.18	1840720-5
YELLOW	ORANGE/GREEN	TOP ONLY	3.3	3.18	1840720-3
YELLOW	ORANGE/GREEN	TOP AND SIDE	1.8	1.8	1840720-2
YELLOW	ORANGE/GREEN	TOP ONLY	1.8	1.8	1840720-1

CI: 1000pF, 3KV, DECOUPLING CAPACITOR
 R1-R4: 75ohms 1/16W, 5% RESISTORS

THIS DRAWING IS A CONTROLLED DOCUMENT.

DIMENSIONS: mm
 TOLERANCES UNLESS OTHERWISE SPECIFIED:
 0 PLC ±0.25
 1 PLC ±0.25
 2 PLC ±0.25
 3 PLC ±0.25
 4 PLC ±0.25
 ANGLES ±0.5

FINISH: 1

OWN: TOWER YU 16MAY2006
 CH: WELIH ZHU 16MAY2006
 APVD: TEDDY XILONG 16MAY2006

PRODUCT SPEC: 108-2207
 APPLICATION SPEC

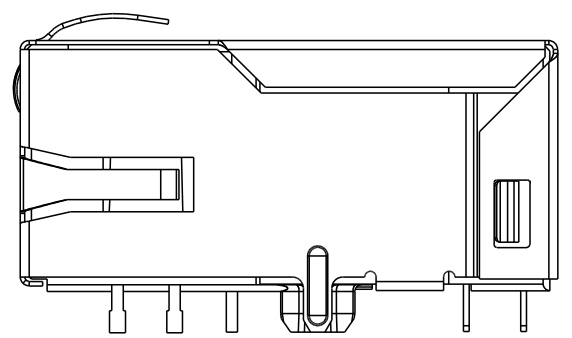
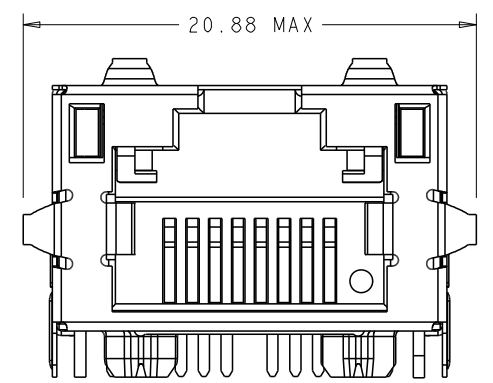
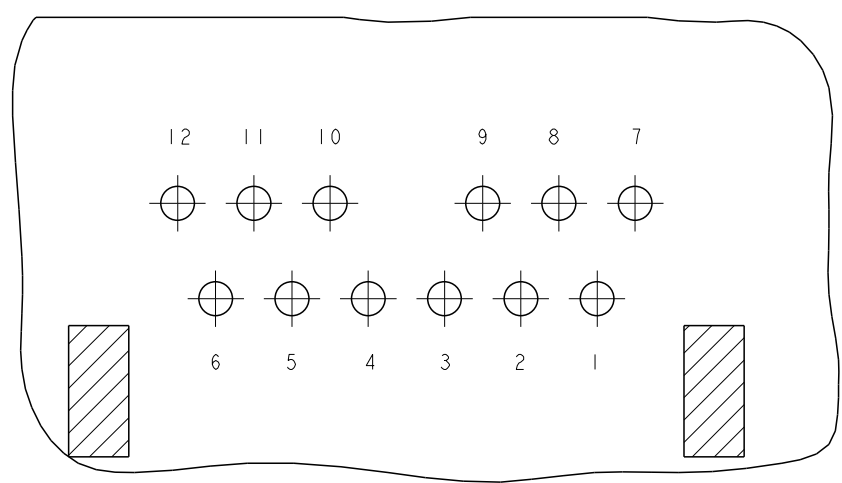
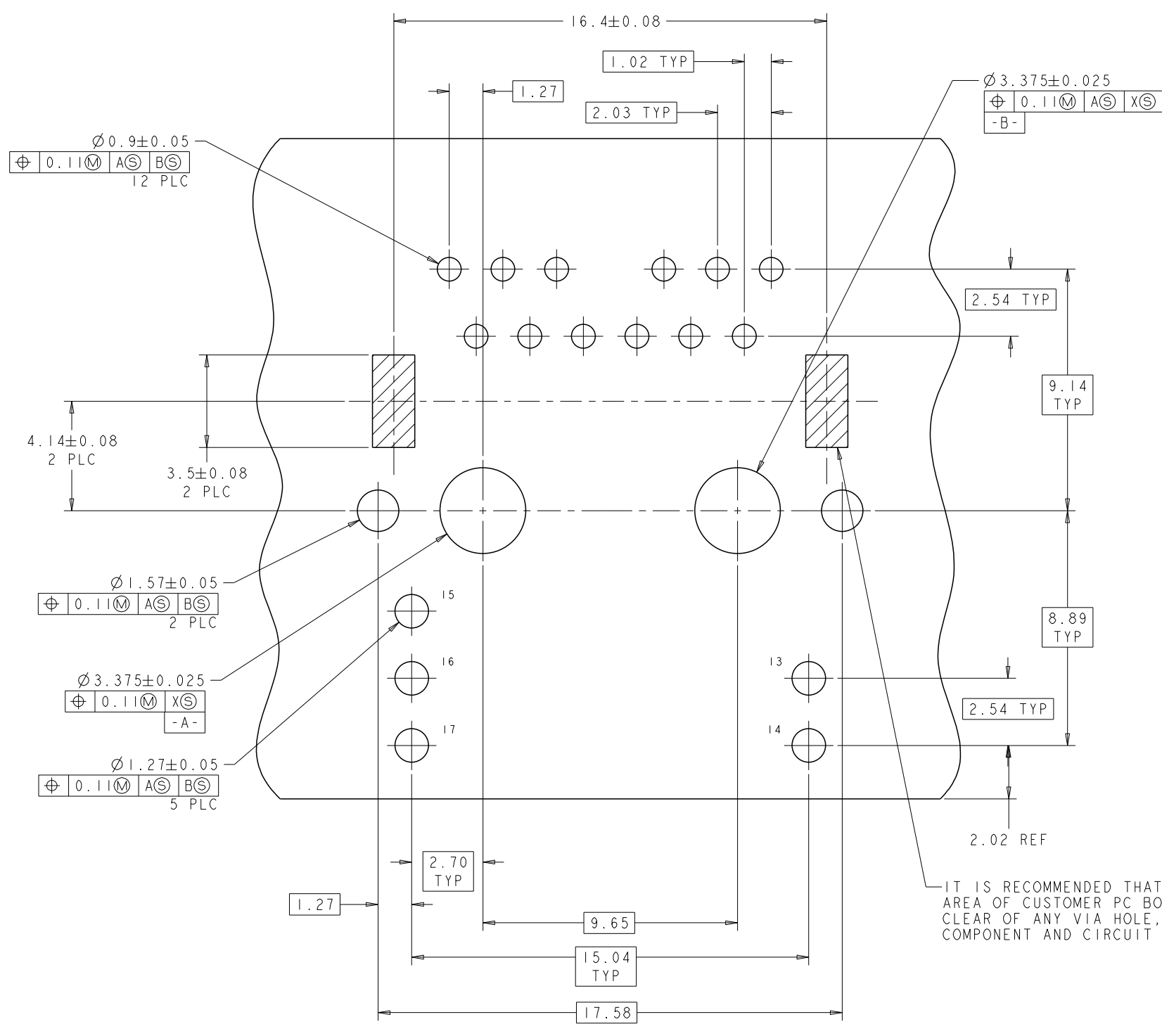
NAME: 1X1 MAG45(TM), JACK, 114 10/100 SHIELDED, LEDS, SELECTIVE CAPABILITY

SIZE: A1
 CAGE CODE: C=1840720
 DRAWING NO: 108-2207

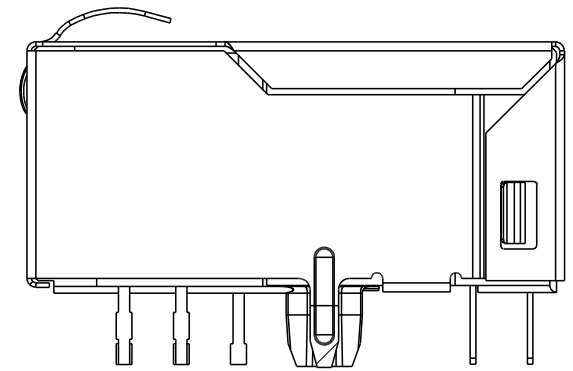
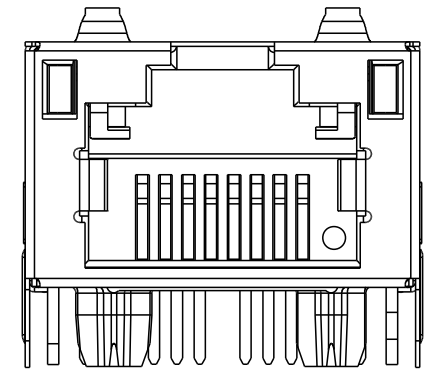
RESTRICTED TO: CUSTOMER DRAWING

SCALE: NTS
 SHEET: 1 OF 2
 REV: H

ONLY FOR 1840720-5



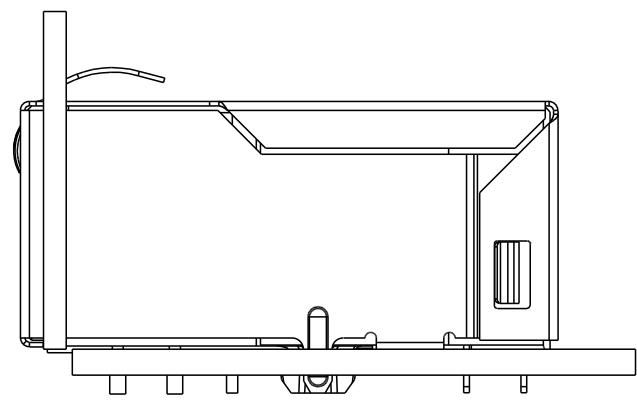
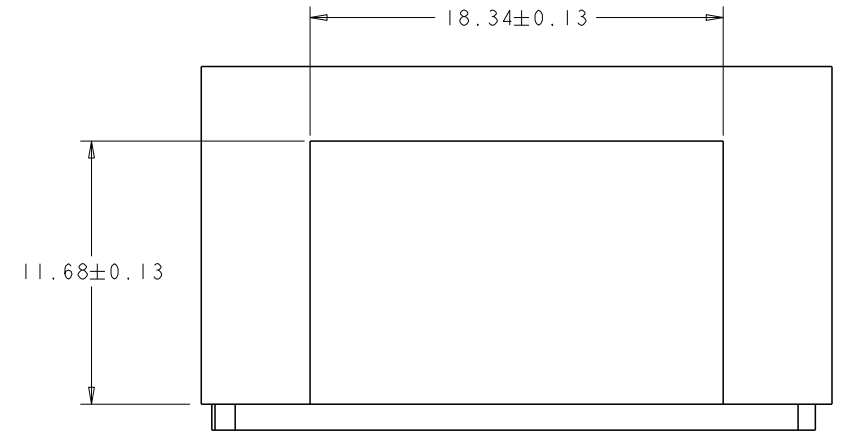
1840720-2



1840720-3

IT IS RECOMMENDED THAT SHADED AREA OF CUSTOMER PC BOARD BE CLEAR OF ANY VIA HOLE, COMPONENT AND CIRCUIT TRACE

SUGGESTED PCB LAYOUT (COMPONENT SIDE)



SUGGESTED PANEL OPENING

THIS DRAWING IS A CONTROLLED DOCUMENT.		DWN: TOWER YU 16MAY2006		TRP connector Dongguan China	
DIMENSIONS: mm		CHK: WELTH ZHU 16MAY2006			
TOLERANCES UNLESS OTHERWISE SPECIFIED:		APPD: TEDDY XILONG 16MAY2006		NAME: IXI MAG45(TM). JACK, 114 10/100 SHIELDED, LEDS, SELECTIVE CAPABILITY	
0 PLC ± 1 PLC ±0.25 2 PLC ±0.25 3 PLC ± 4 PLC ± ANGLES ±		PRODUCT SPEC: 108-2207 APPLICATION SPEC:		SIZE: A1	
MATERIAL:		FINISH:		WEIGHT:	
CUSTOMER DRAWING		SCALE: NTS		SHEET 2 OF 2	