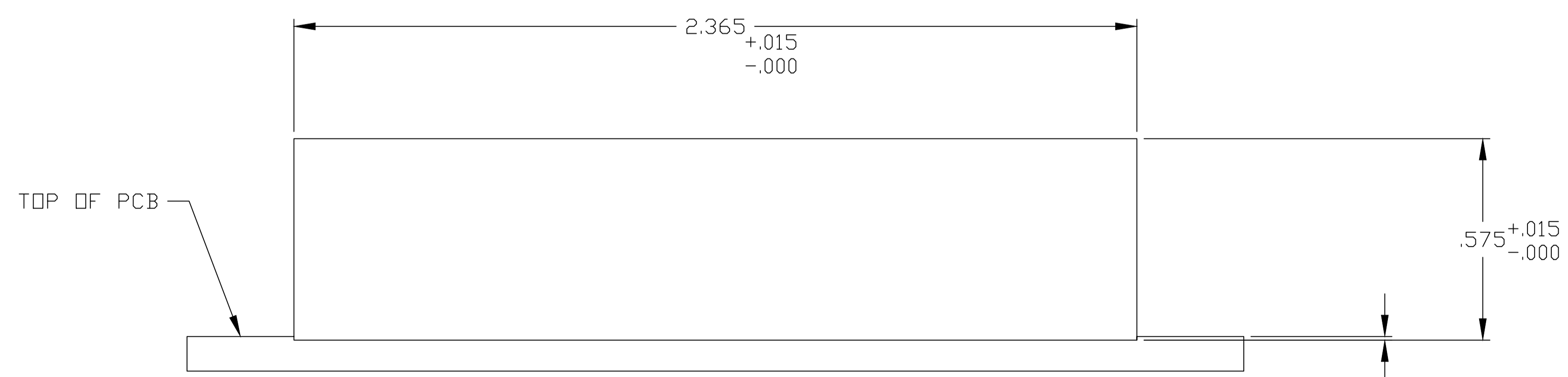
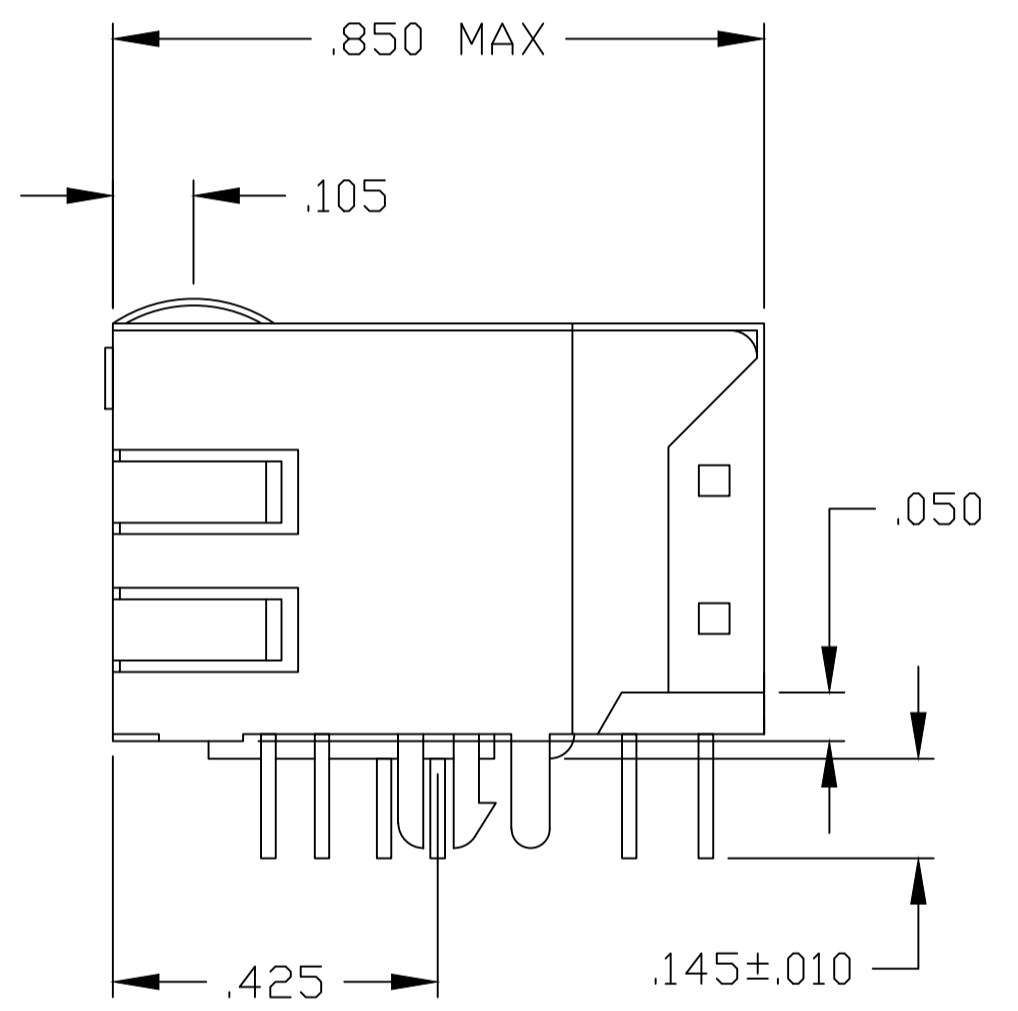
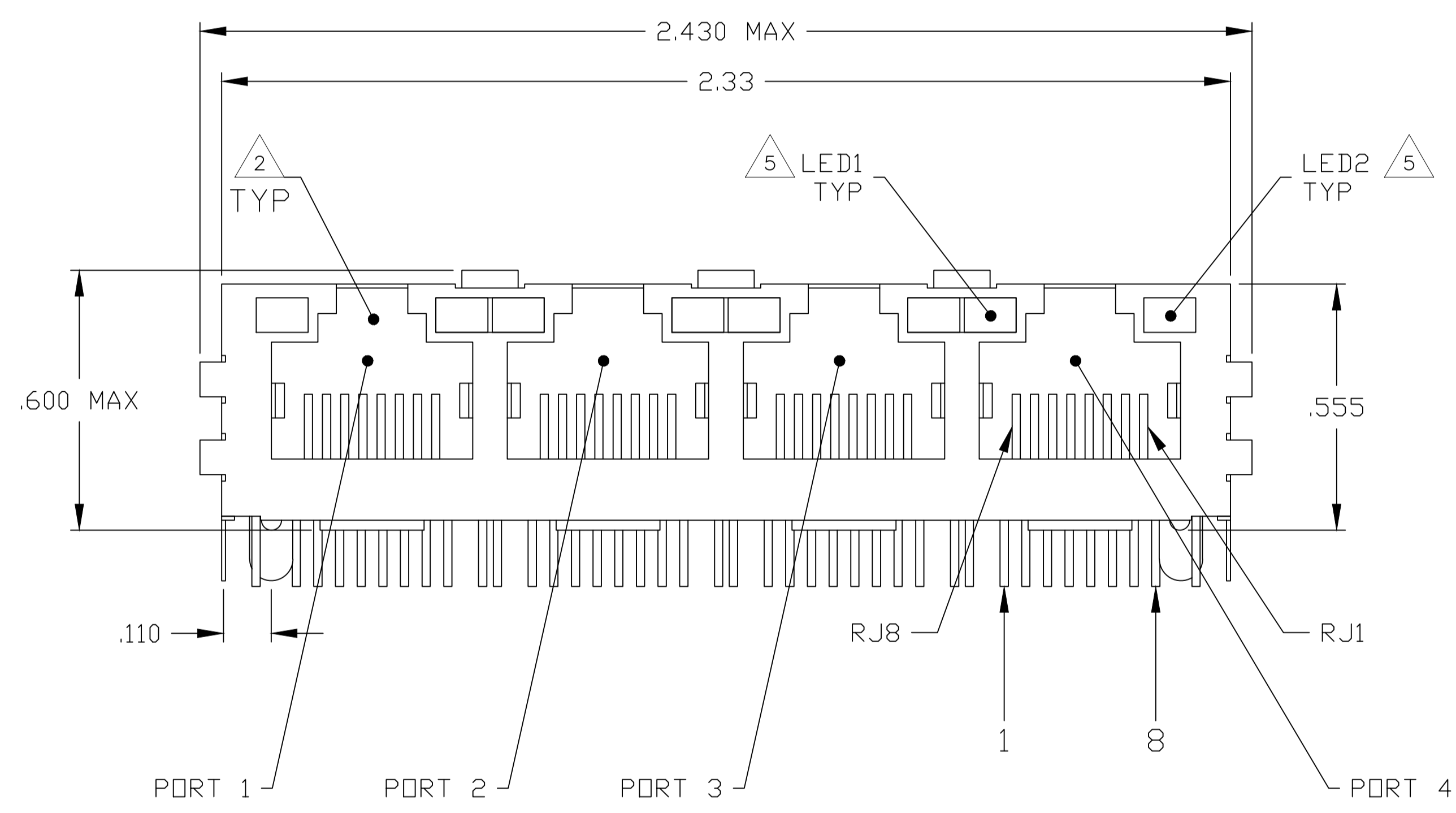
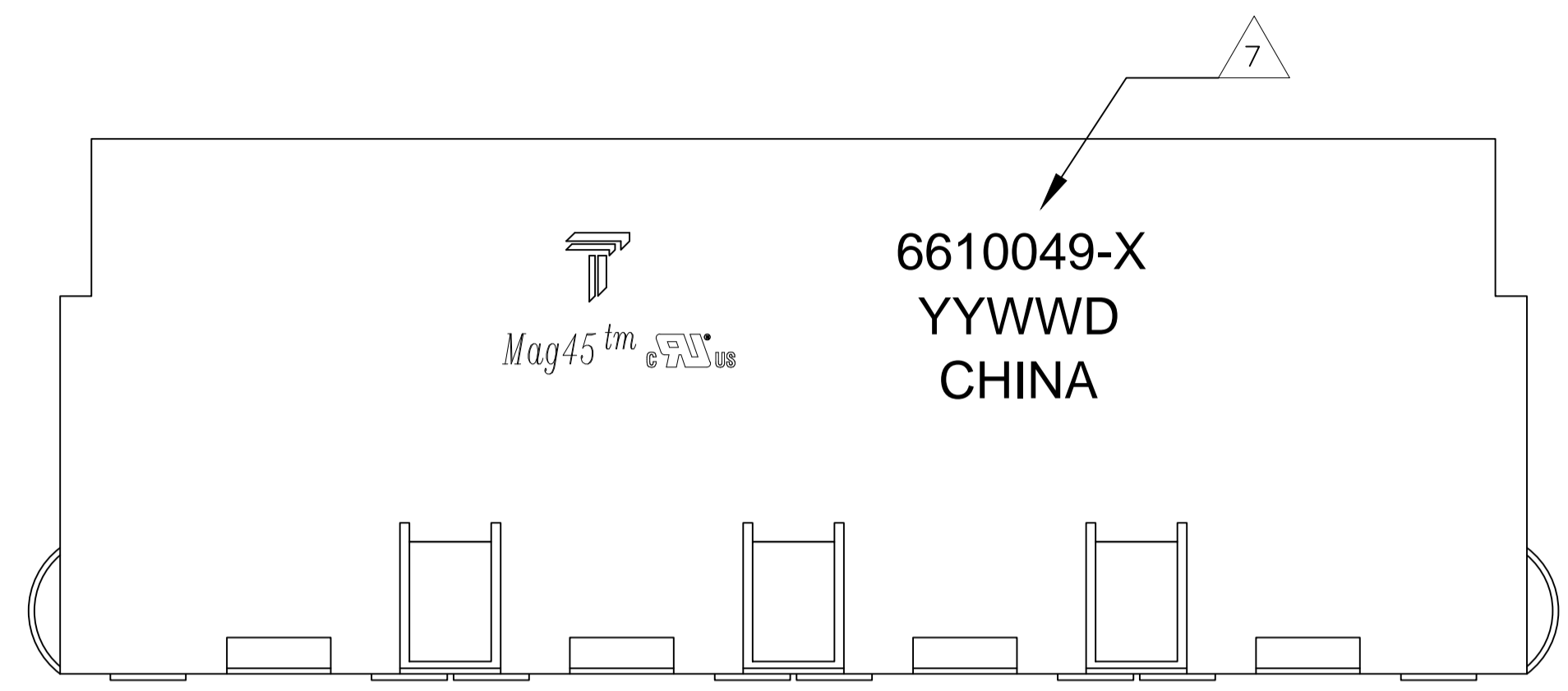


MECHANICAL:



1X4 SUGGESTED PANEL CUTOUT

REVISIONS				
#	LTR	DESCRIPTION	DATE	OWN APD
E		LOGO CHANGE	07APR2013	QL KZ

- NOTES:
- MATERIALS:**
 - HOUSING - THERMOPLASTIC PET POLYESTER FLAMMABILITY RATING UL 94V-0
 - SHIELD - .010" THICK, C26800 BRASS PREPLATED WITH 30μINCH MIN SEMI-BRIGHT NICKEL.
 - SOLDER TABS POST DIPPED WITH 100μINCH MIN SAC SOLDER.
 - MOD JACK CONTACTS - 0.0157 X 0.018" PHOSPHOR BRONZE, 50μINCH MIN OVERALL NICKEL UNDERPLATE WITH SELECT 50μINCH MIN HARD GOLD FINISH PLATE. SOLDER TAILS WITH 100μINCH MIN MATTE TIN AND/OR SAC SOLDER DIP.
 - LIGHT EMITTING DIODE(LED) - DIFFUSED EPOXY LENS, .020" X .020" CARBON STEEL WIREFRAME LEADS PRE-PLATED WITH 80μINCH SILVER OVER 40μINCH NICKEL UNDERPLATE OVER 40μINCH COPPER UNDERPLATE. POST-PLATED WITH 100μIN MIN MATTE TIN AND/OR SAC SOLDER DIP OR PURE TIN SOLDER DIP.
 - RJ45 JACK CAVITY CONFORMS TO FCC RULES AND REGULATIONS PART 68, SUB PART F.
 - MAGNETICS**
 - IMPEDANCE: 100 OHMS
 - TURNS RATIO (CHIP:CABLE): TX = 1:1, RX = 1:1
 - OPEN CIRCUIT INDUCTANCE (OCL): 350μH MIN @100kHz, 0.1VRMS, 8mADC BIAS FROM 0°C TO 70°C, TX AND RX
 - PERFORMANCE @ 25°C:
 - INSERTION LOSS (IL): 1.1dB MAX FROM 0.5MHz TO 100MHz
 - RETURN LOSS (RL): 18dB MIN FROM 0.5MHz TO 30MHz
 - 18-20LOG(f/30)dB MIN FROM 30.1MHz TO 60MHz
 - 12dB MIN FROM 60.1MHz TO 80MHz
 - CROSSTALK ATTENUATION: 35dB MIN FROM 0.5MHz TO 40MHz
 - 33-20*LOG(f/50)dB MIN FROM 40.1MHz TO 100MHz
 - COMMON MODE REJECTION RATIO (CMRR): 30dB MIN FROM 0.5MHz TO 100MHz
 - ISOLATION VOLTAGE: 2250VDC (MAX) FOR 60 SECONDS WITH A RISE TIME OF 500V/SEC AND WITH ALL PORTS CONNECTED.
 - OPERATING TEMPERATURE: FROM 0°C TO +70°C.
 - LED IS DRIVEN WITH 5V VOLTAGE AND THE MAX OPERATING CURRENT IS 20mA.
LED COLOR : DOMINANT WAVELENGTH (λD): GREEN 568 nm TYP. At VF=5V
FORWARD CURRENT (IF): GREEN 12 mA TYP. at VF=5V
DOMINANT WAVELENGTH (λD): YELLOW 588 nm TYP. At VF=5V
FORWARD CURRENT (IF): YELLOW 13 mA TYP. at VF=5V
 - INDICATED CONNECTIONS ARE FOR HUB CONFIGURATION. HOWEVER, THE MAGNETICS ARE SYMMETRICAL TO ACCOMODATE CONNECTIONS FOR EITHER NIC OR HUB CONFIGURATION, OR AUTO-MDI/MDIX.
 - TRP CONNECTOR LOGO, PART NUMBER, DATE CODE, COUNTRY OF ORIGIN AND AGENCY APPROVAL MARKING IN APPROXIMATE LOCATION SHOWN.
 - THESE PARTS ARE RECOMMENDED FOR WAVE SOLDERING PROCESS, PREHEAT TEMPERATURE IS 120°C TO 160°C, 120 SECONDS TO 180 SECONDS, PEAK WAVE SOLDERING TEMPERATURE IS 260°C MAX, 10 SECONDS MAX.

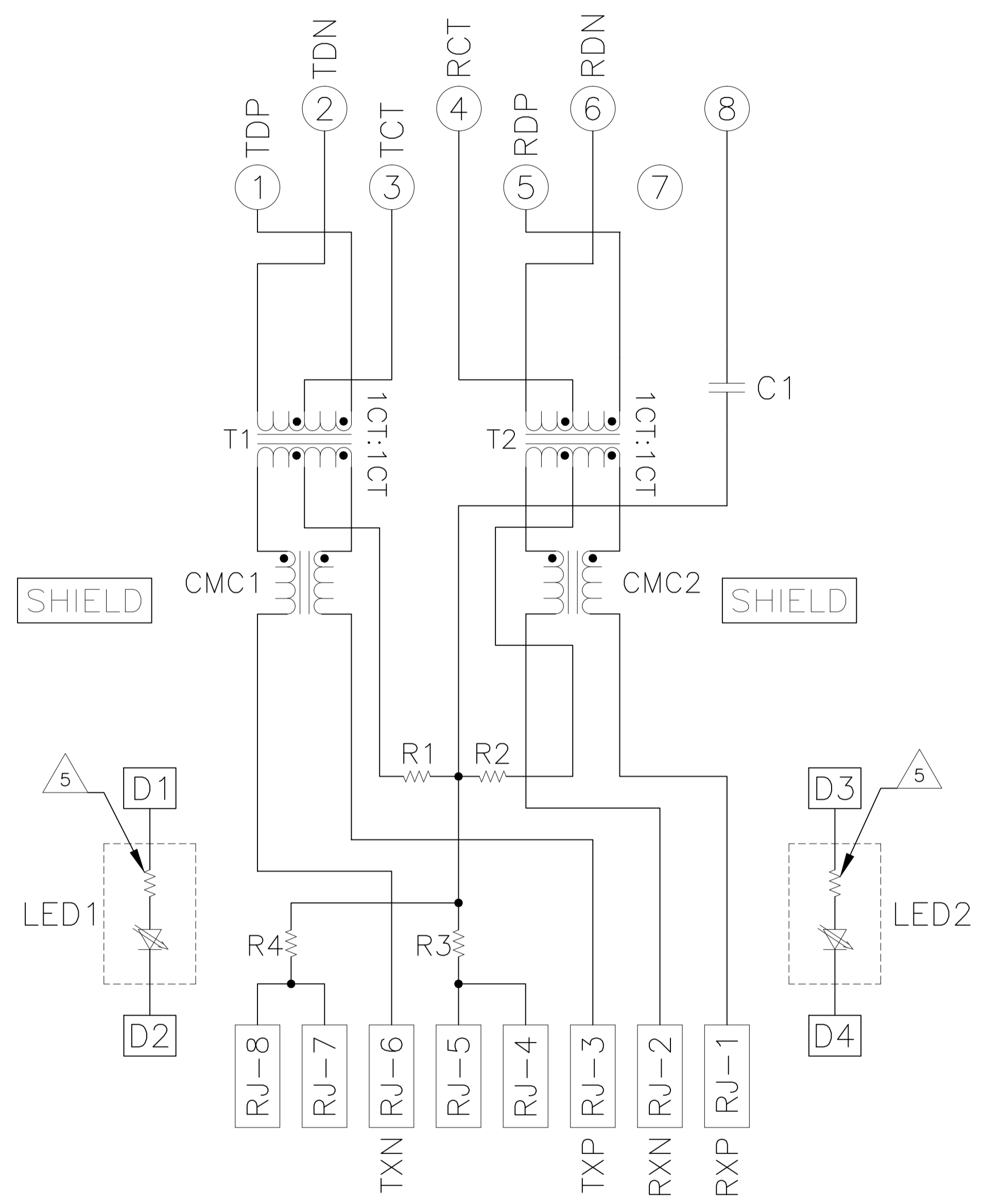
YES	GREEN	YELLOW	5-6610049-1
NO	GREEN	GREEN	1-6610049-1
DECOUPLING CAPACITOR	LED1	LED2	PART NUMBER

THIS DRAWING IS A CONTROLLED DOCUMENT.

DIMENSIONS:	TOLERANCES UNLESS OTHERWISE SPECIFIED:	16MAR2005	16MAR2005	16MAR2005	16MAR2005
INCHES	0 PLC ± .	1 PLC ± .	2 PLC ± .010	3 PLC ± .005	4 PLC ± .
	ANGLES	FINISH			

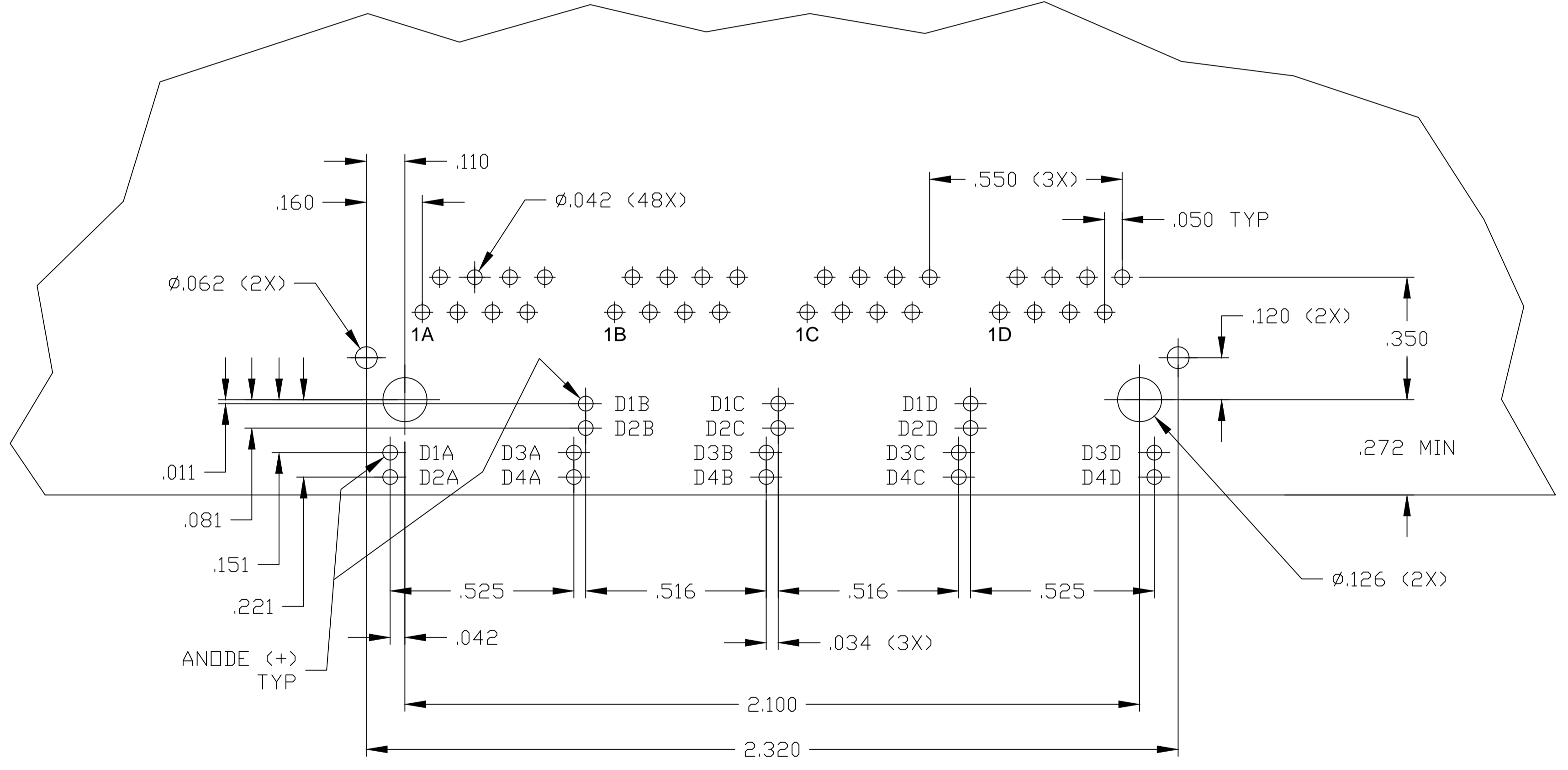
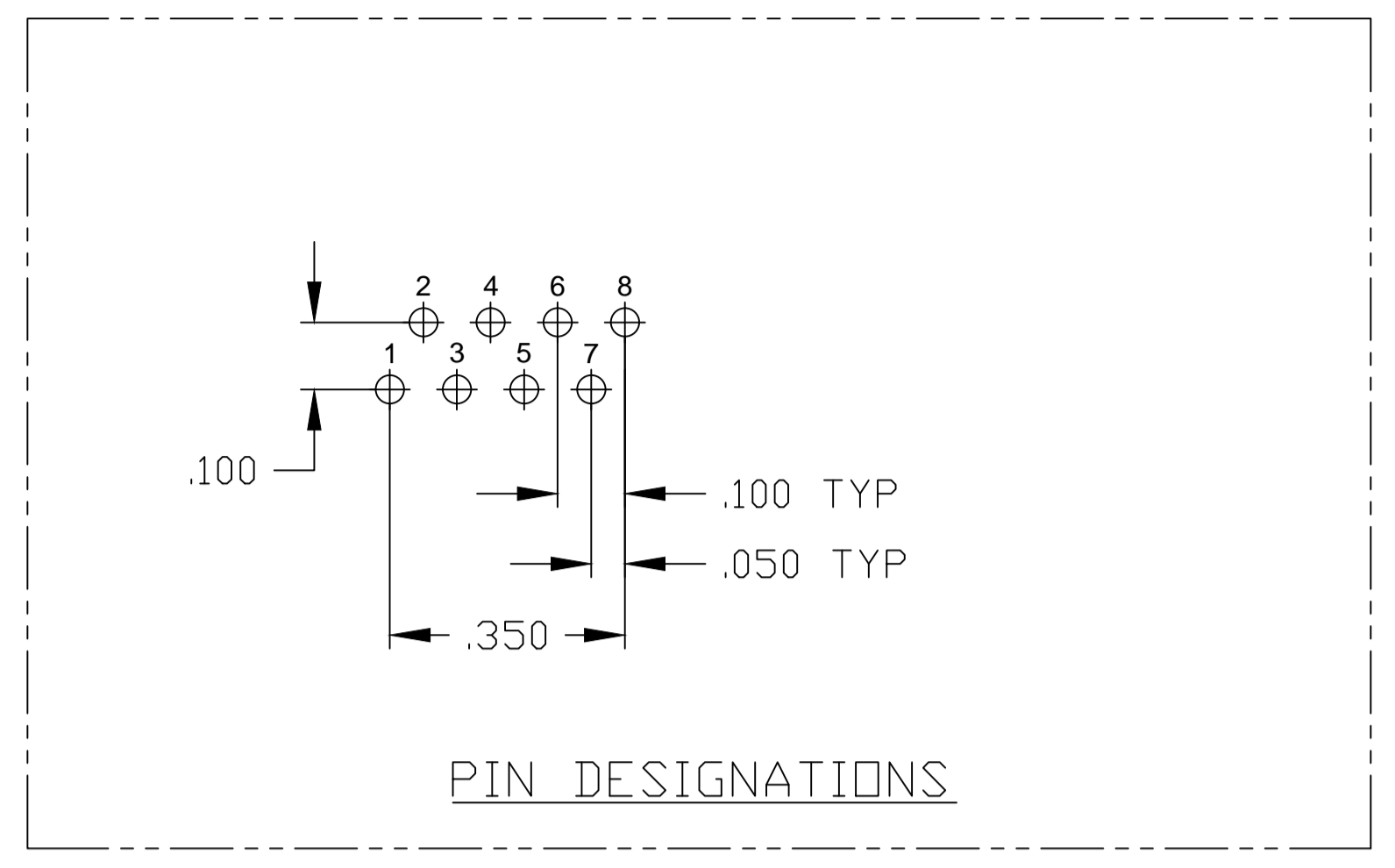
APD	D. FAROLE	TRP connector	Dongguan China
PRODUCT SPEC	108-2100	NAME	1X4 MAG45(TM) MODULAR JACK, 7H2 SCHEMATIC, 66 SERIES CIRCUIT, SHIELDED, OPTIONAL DECOUPLING CAPACITOR, RESISTOR LEADS
APPLICATION SPEC		SIZE	CAGE CODE DRAWING NO
WEIGHT		A1	00779
CUSTOMER DRAWING		SCALE	4:1
		SHEET	1 OF 2
		REV	E

766 SERIES MAGNETIC CIRCUIT 



C1 = 1000pF, 2kV CAPACITOR

R1-R4 = 75 OHMS, 1/16 W RESISTOR



SUGGESTED PCB LAYOUT
(COMPONENT SIDE)

THIS DRAWING IS A CONTROLLED DOCUMENT.		DWN L. VARELA - 16MAR2005	TRP connector Dongguan China												
DIMENSIONS: INCHES		CHK D. FAROLE - 16MAR2005	APPRO D. FAROLE - 16MAR2005												
TOLERANCES UNLESS OTHERWISE SPECIFIED:		PRODUCT SPEC 108-2100	NAME 1X4 MAG45(TM) MODULAR JACK, 7H2 SCHEMATIC, 66 SERIES CIRCUIT, SHIELDED, OPTIONAL DECOUPLING CAPACITOR, RESISTOR LEADS												
<table border="1"> <tr><td>0 PLC</td><td>± -</td></tr> <tr><td>1 PLC</td><td>± .010</td></tr> <tr><td>2 PLC</td><td>± .010</td></tr> <tr><td>3 PLC</td><td>± .005</td></tr> <tr><td>4 PLC</td><td>± .005</td></tr> <tr><td>ANGLES</td><td>± -</td></tr> </table>		0 PLC	± -	1 PLC	± .010	2 PLC	± .010	3 PLC	± .005	4 PLC	± .005	ANGLES	± -	APPLICATION SPEC -	SIZE A1
0 PLC	± -														
1 PLC	± .010														
2 PLC	± .010														
3 PLC	± .005														
4 PLC	± .005														
ANGLES	± -														
MATERIAL -		FINISH -	WEIGHT -												
		CUSTOMER DRAWING	SCALE 4:1 SHEET 2 OF 2 REV E												