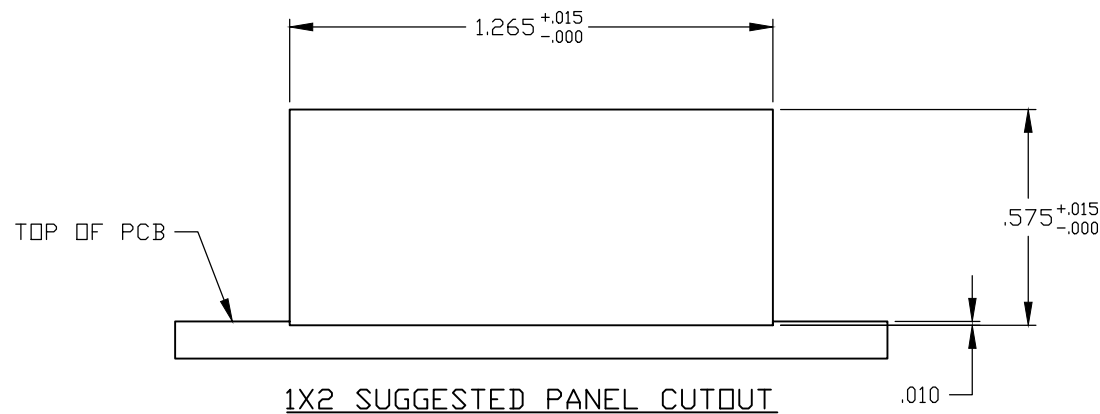
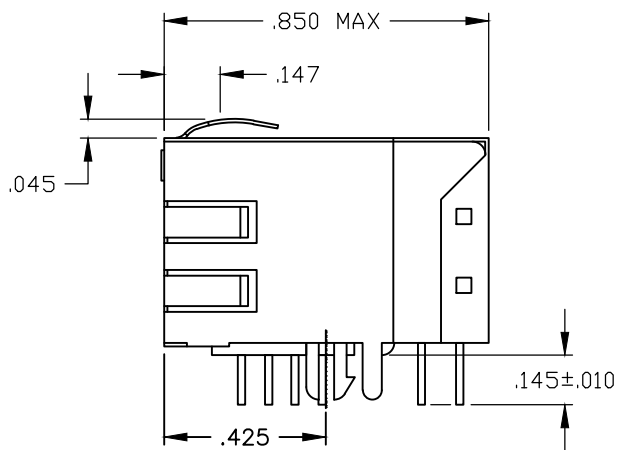
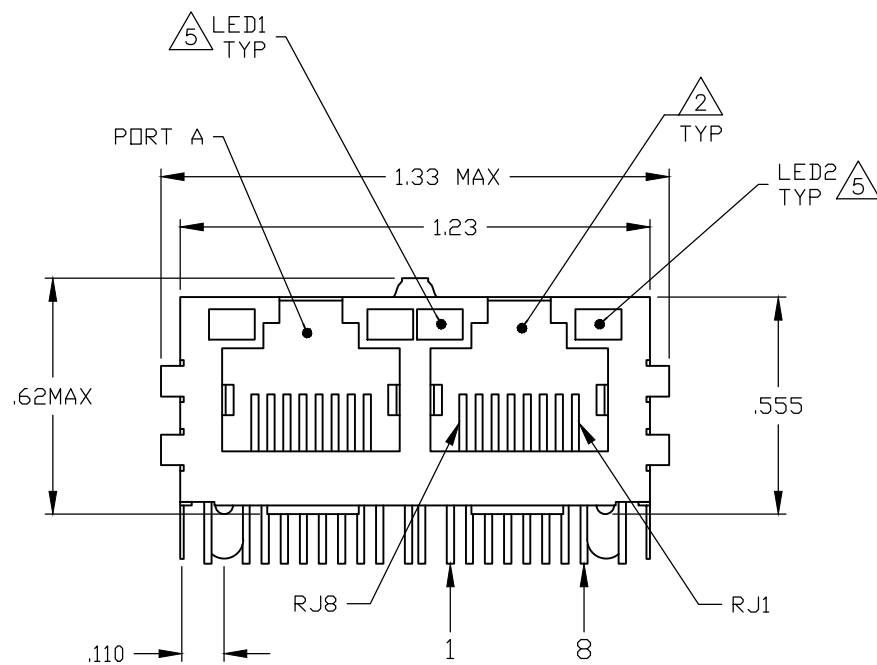
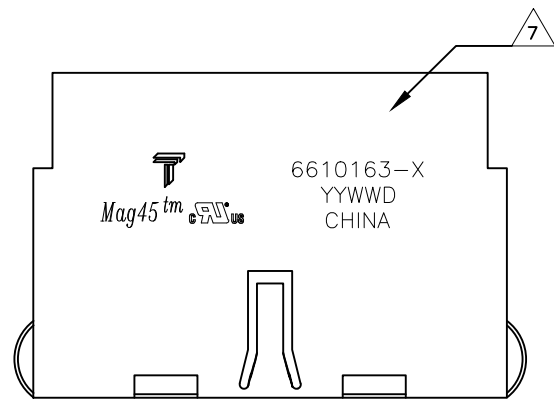


REVISIONS				
#	LR	DESCRIPTION	DATE	APP'D
D		LOGO CHANGE	07APR2013	QL KZ

MECHANICAL:



△ MATERIALS:
 -HOUSING - THERMOPLASTIC PET POLYESTER FLAMMABILITY RATING UL 94V-0.
 -SHIELD - .010" THICK, C26800 BRASS PREPLATED WITH 30mINCH MIN SEMI-BRIGHT NICKEL. SOLDER TABS POST DIPPED WITH 100mINCH MIN SAC SOLDER.
 -MOD JACK CONTACTS - 0.0157 X 0.018" PHOSPHOR BRONZE, 50mINCH MIN OVERALL NICKEL UNDERPLATE WITH SELECT 50mINCH MIN HARD GOLD FINISH PLATE.
 SOLDERTAILS WITH 100mINCH MIN MATTE TIN AND/OR SAC SOLDER DIP.
 -LIGHT EMITTING DIODE(LED) - DIFFUSED EPOXY LENS, .020" X .020" CARBON STEEL WIREFRAME LEADS PRE-PLATED WITH 80mINCH SILVER OVER 40mINCH NICKEL UNDERPLATE OVER 40mINCH COPPER UNDERPLATE. POST-PLATED WITH 100mIN MIN MATTE TIN AND/OR SAC SOLDER DIP OR PURE TIN SOLDER DIP.

△ RJ45 JACK CAVITY CONFORMS TO FCC RULES AND REGULATIONS PART 68, SUB PART F.

△ MAGNETICS
 -IMPEDANCE: 100 OHMS
 -TURNS RATIO (CHIP:CABLE): TX = 1:1, RX = 1:1
 -OPEN CIRCUIT INDUCTANCE (OCL): 350mH MIN @100kHz, 0.1VRMS, 8mADC BIAS FROM 0°C TO 70°C, TX AND RX
 -PERFORMANCE @ 25°C:

INSERTION LOSS (IL): 1.1dB MAX FROM 0.5MHz TO 100MHz
 RETURN LOSS (RL): 18dB MIN FROM 0.5MHz TO 30MHz
 18-20LOG(f/30)dB MIN FROM 30.1MHz TO 60MHz
 12dB MIN FROM 60.1MHz TO 80MHz
 CROSSTALK ATTENUATION: 35dB MIN FROM 0.5MHz TO 40MHz
 33-20*LOG(f/50)dB MIN FROM 40.1MHz TO 100MHz
 COMMON MODE REJECTION RATIO (CMRR): 30dB MIN FROM 0.5MHz TO 100MHz
 -ISOLATION VOLTAGE: COMPLIES WITH IEEE802.3 2002, PARA 23.5.1.1, ITEM b.

4. OPERATING TEMPERATURE: 0°C TO +70°C.

△ LEDS ARE DRIVEN WITH CONSTANT CURRENT AT APPROX 20 mA
 LED COLOR:
 DOMINANT WAVELENGTH (λD): GREEN 568 nm TYP @ IF=20 mA
 FORWARD VOLTAGE (VF): GREEN 2.2V TYP @ IF=20 mA
 DOMINANT WAVELENGTH (λD): YELLOW 588 nm TYP @ IF=20 mA
 FORWARD VOLTAGE (VF): YELLOW 2.1V TYP @ IF=20 mA

△ INDICATED CONNECTIONS ARE FOR NIC CONFIGURATION. THE MAGNETICS ARE SYMMETRIC AND SUPPORT AUTO-MDI/MDIX.

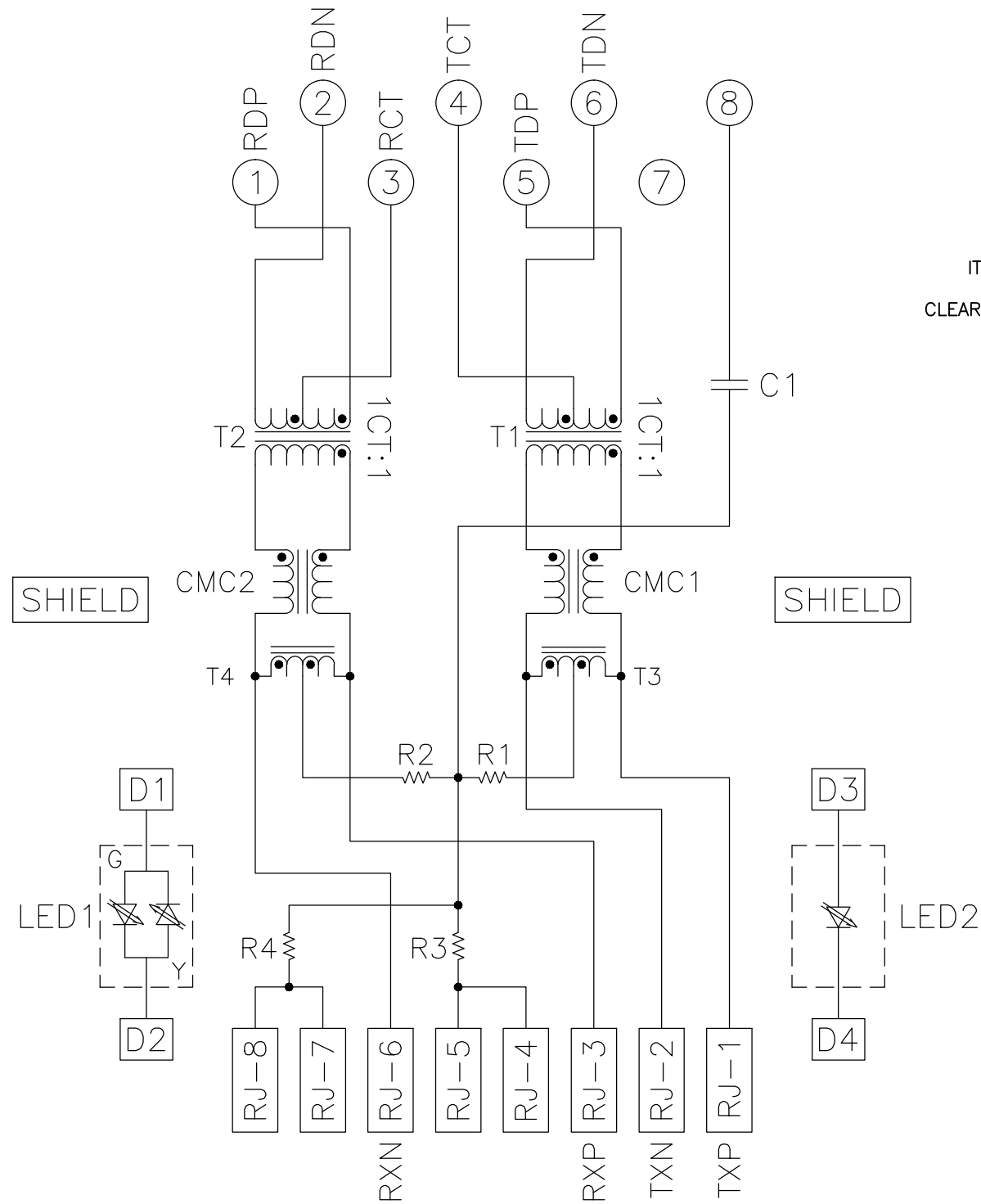
△ TRP CONNECTOR LOGO, PART NUMBER, DATE CODE, COUNTRY OF ORIGIN AND AGENCY APPROVAL MARKING IN APPROXIMATE LOCATION SHOWN.

8. THE PART IS RECOMMENDED FOR WAVE SOLDERING PROCESS, PEAK WAVE SOLDERING TEMPERATURE IS 260°C MAX, 10 SECONDS MAX.

GREEN/YELLOW	GREEN	5-6610163-5
LED1 △	LED2 △	PART NUMBER

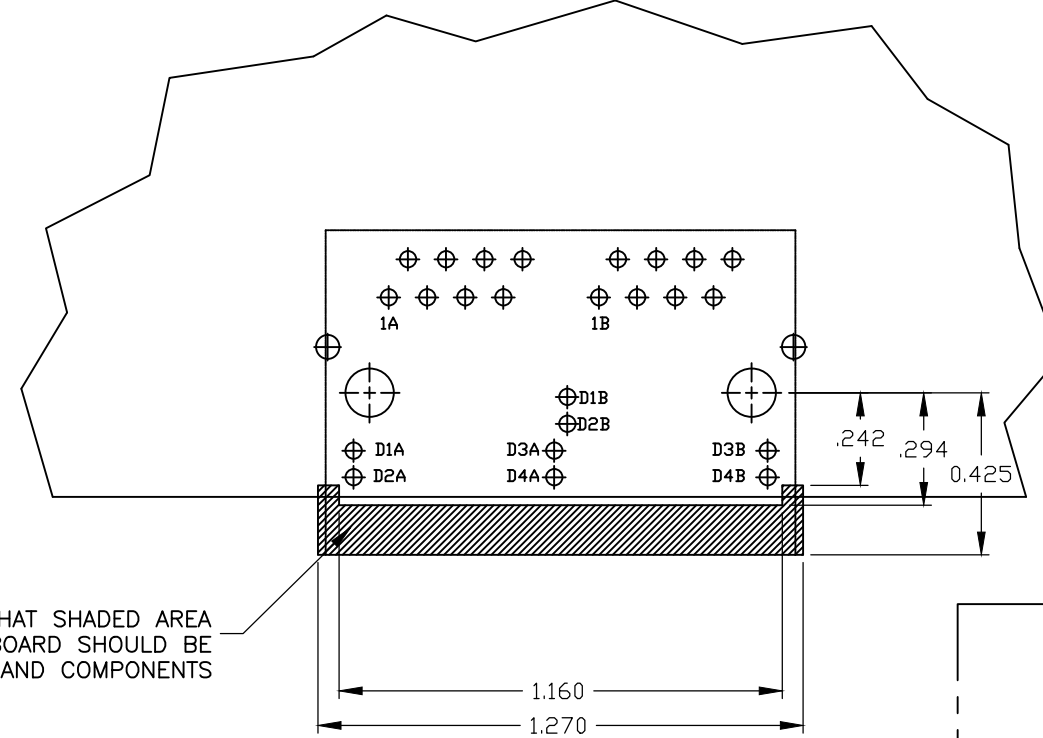
THIS DRAWING IS A CONTROLLED DOCUMENT.		DRN G. ATTADIA - DOCKS CHK D. FAROLE APP'D D. FAROLE 16MAR2005 16MAR2005		TRP connector Dongguan China	
DIMENSIONS: INCHES 0 PLC ± - 1 PLC ± - 2 PLC ± .010 3 PLC ± .005 4 PLC ± - ANGLES ± -		TOLERANCES UNLESS OTHERWISE SPECIFIED: 0 PLC ± - 1 PLC ± - 2 PLC ± .010 3 PLC ± .005 4 PLC ± - ANGLES ± -		PRODUCT SPEC 108-2100 APPLICATION SPEC - WEIGHT - CUSTOMER DRAWING	
MATERIAL △ FINISH △		NAME 1X2 MAG45(TM) MODULAR JACK, 7N2 SCHEMATIC, 715 SERIES MAGNETIC CIRCUIT, SHIELDED, DECOUPLING CAPACITOR, WITH LEDS		SIZE CASE CODE DRAWING NO RESTRICTED TO A1 00779 C-6610163 SCALE 4:1 SHEET 1 OF 2 REV D	

715 SERIES MAGNETIC CIRCUIT $\triangle_3 \triangle_6$

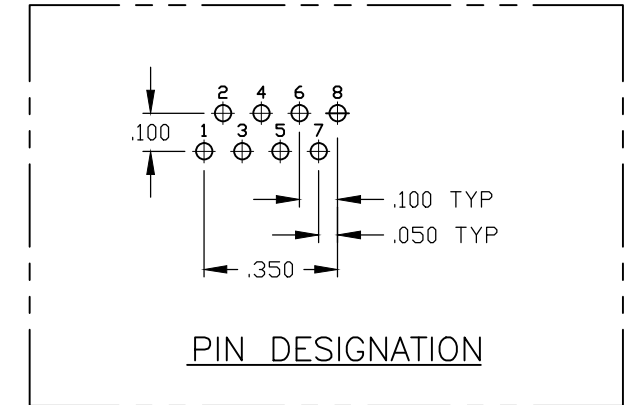


C1 = 1000 pF, 2kV CAPACITOR
 R1-R4 = 75 Ohms, 1/16 W, RESISTORS

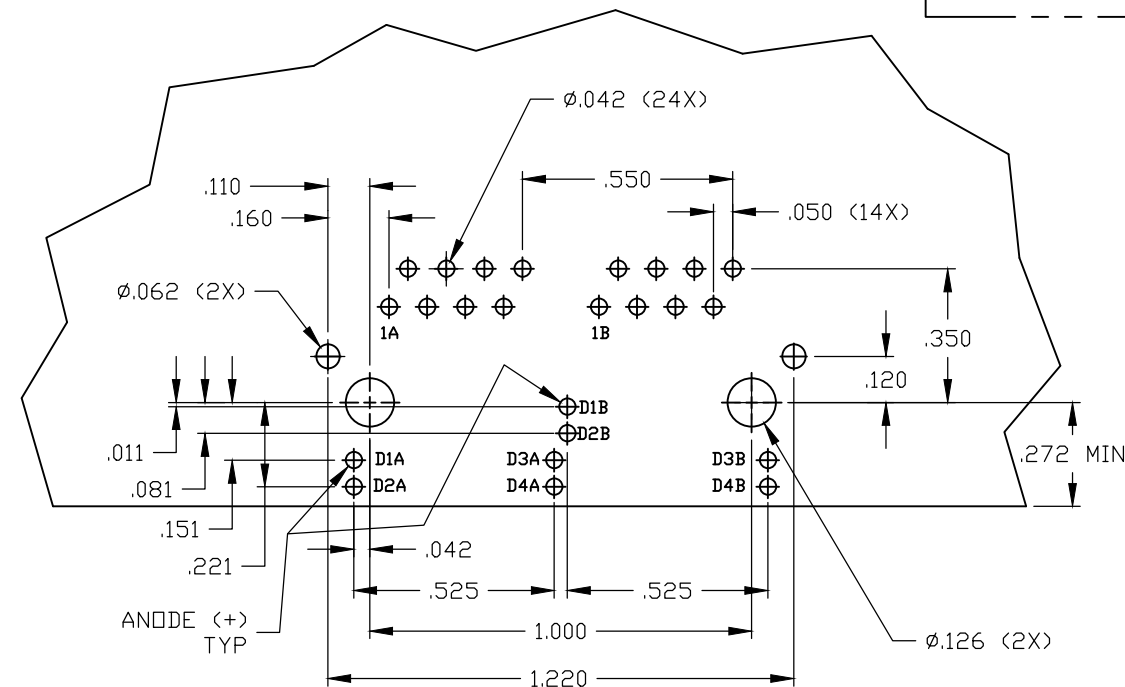
IT IS RECOMMENDED THAT SHADED AREA OF CUSTOMER PC BOARD SHOULD BE CLEAR OF ANY VIA HOLES AND COMPONENTS



SUGGESTED PCB KEEP OUT AREA
 (Component Side)



PIN DESIGNATION



SUGGESTED PCB LAYOUT
 (Component Side)

THIS DRAWING IS A CONTROLLED DOCUMENT.		DRN G. ATTADIA - DOCKS	16MAR2005	TRP connector Dongguan China
DIMENSIONS:		CHK D. FAROLE	16MAR2005	
INCHES		APP'D D. FAROLE	16MAR2005	PRODUCT SPEC
0 PLC ± - 1 PLC ± - 2 PLC ± .010 3 PLC ± .005 4 PLC ± - ANGLES ± -		TOLERANCES UNLESS OTHERWISE SPECIFIED:		NAME 1X2 MAG45(TM) MODULAR JACK, 7N2 SCHEMATIC, 715 SERIES MAGNETIC CIRCUIT, SHIELDED, DECOUPLING CAPACITOR, WITH LEADS
MATERIAL		FINISH		SIZE A1
				QTY 00779
				SCALE 4:1
				REV 2
				SHEET 2
				REV D